



**University of
Zurich**^{UZH}

**Zurich Open Repository and
Archive**

University of Zurich
Main Library
Strickhofstrasse 39
CH-8057 Zurich
www.zora.uzh.ch

Year: 2015

**Rheumatoid arthritis and coronary atherosclerosis: two cousins engaging in
a dangerous liaison**

Klingenberg, Roland ; Lüscher, Thomas F

DOI: <https://doi.org/10.1093/eurheartj/ehv489>

Posted at the Zurich Open Repository and Archive, University of Zurich

ZORA URL: <https://doi.org/10.5167/uzh-118355>

Journal Article

Published Version

Originally published at:

Klingenberg, Roland; Lüscher, Thomas F (2015). Rheumatoid arthritis and coronary atherosclerosis: two cousins engaging in a dangerous liaison. *European Heart Journal*, 36(48):3423-3425.

DOI: <https://doi.org/10.1093/eurheartj/ehv489>

Rheumatoid arthritis and coronary atherosclerosis: two cousins engaging in a dangerous liaison

Roland Klingenberg^{1*} and Thomas F. Lüscher²

¹Department of Cardiology, Kerckhoff Klinik, Bad Nauheim, Germany; and ²University Heart Center, Department of Cardiology, University Hospital Zurich, Zurich, Switzerland

Online publish-ahead-of-print 6 October 2015

This editorial refers to ‘Rheumatoid arthritis is associated with a more severe presentation of acute coronary syndrome and worse short-term outcome’[†], by Å. Mantel et al., on page 3413.

Rheumatoid arthritis (RA) is a chronic inflammatory immune-mediated disease affecting the joints and several other organs. At a global prevalence of 0.24%, RA is ranked among the top 15% of diseases causing disability worldwide.¹ RA is associated with an increased risk of cardiovascular mortality.² Furthermore, post mortem³ and coronary CT angiography data⁴ indicate a higher prevalence of vulnerable coronary plaques in patients with RA compared with controls.

The article by Mantel et al.⁵ in this issue of the journal adds an important piece to the puzzle, reporting their analysis of a large contemporary Swedish cohort study using national registries. The authors found an increased severity of disease at presentation with an incident acute coronary syndrome (ACS) and worse short-term all-cause mortality in patients with active RA compared with matched controls. Interestingly, worse outcome in patients with RA compared with matched controls persisted after adjustment for clinical covariates, including the type of ACS. Moreover, among deaths, the majority of cases had a cardiac cause (89.9% vs. 90.8%). Of note, all-cause mortality during the first 30 days after an ACS was quite high in patients with RA (15.7%) compared with matched controls (10.7%), likely attributable to the surprisingly advanced age in this cohort (median age 73.8 vs. 73.6 years). Altogether, these findings support the notion of an aggravated course of coronary atherosclerosis and ACS in patients with RA.

RA and atherosclerosis as the underlying cause of coronary artery disease share several features in pathophysiology, genetic predisposition and risk factors, assigning a central role to inflammation.⁶ Indeed, like RA, atherosclerosis is a chronic inflammatory disease, specifically of the arterial wall. The dynamic nature of atherosclerosis

is characterised by its evolution in several stages, culminating in plaque rupture or erosion with ensuing atherothrombosis and vascular occlusion as the pathophysiological culprit of an ACS.⁷ Endothelial activation with expression of cell adhesion molecules occurs in arteries exposed to disturbed blood flow (i.e. bifurcations) and pro-inflammatory stimuli. Lipoprotein accumulation and oxidative modification in the subintimal space propagate expression of cell adhesion molecules and synthesis of pro-inflammatory cytokines and mediators by endothelial cells which, in turn, result in the recruitment and activation of various types of circulating leucocytes comprising neutrophils, monocytes and T cells (predominantly the T helper 1 subset). In the arterial intima, monocytes differentiate into macrophages and take up oxidised lipoproteins, converting them into foam cells. T cells can recognise specific antigens derived from these modified lipoproteins and orchestrate the immune response. Atherosclerotic lesion progression involves migration and proliferation of vascular smooth muscle cells in the intima and increased turnover of components of the extracellular matrix (i.e. collagen, elastin and proteoglycans) by matrix-degrading enzymes. Advanced stages of atherosclerotic plaques are characterised by a lipid core, an accumulation of extracellular lipids with cholesterol crystals derived from dead cells (i.e. foam cells and vascular smooth muscle cells), sealed on the luminal side by a fibrous cap separating it from circulating blood. These dynamic changes in plaque composition culminate in plaque rupture or erosion, followed by thrombus formation (Figure 1A).

In RA, the inflammatory process in the synovial joint is characterised by endothelial activation with increased expression of adhesion molecules and infiltration of immune cells comprising T cells of the T helper 1 subset and monocytes. Cartilage degradation in the synovial joint constitutes the hallmark of RA, mediated by persistently activated fibroblast-like synoviocytes (FLS) that express matrix-degrading enzymes. The combination of degradation products from the extracellular matrix exposing antigens that can be recognised by T cells and

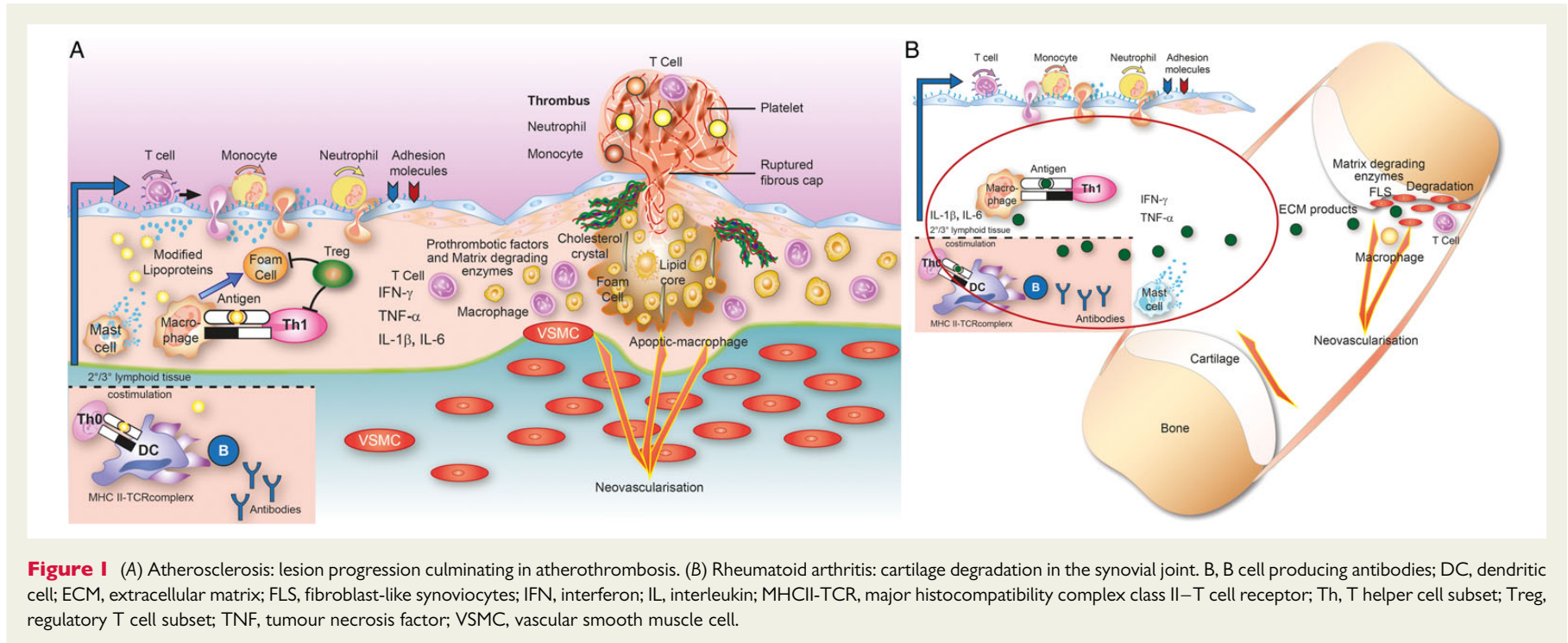
The opinions expressed in this article are not necessarily those of the Editors of the *European Heart Journal* or of the European Society of Cardiology.

[†] doi:10.1093/eurheartj/ehv461.

* Corresponding author. Department of Cardiology, Kerckhoff Klinik, Benekestr. 2-8, D-61231 Bad Nauheim, Germany. Tel: +49 (0) 6032 996 6463, Fax: +49 (0) 6032 996 2399, Email: r.klingenberg@kerckhoff-klinik.de

© The Author 2015. Published by Oxford University Press on behalf of the European Society of Cardiology.

This is an Open Access article distributed under the terms of the Creative Commons Attribution Non-Commercial License (<http://creativecommons.org/licenses/by-nc/4.0/>), which permits non-commercial re-use, distribution, and reproduction in any medium, provided the original work is properly cited. For commercial re-use, please contact journals.permissions@oup.com



inflammatory signals from adjacent cells lead to perpetuation of the inflammatory process, including neovascularisation^{6,8} (Figure 1B).

Increased numbers of a distinct T cell subset—CD4⁺CD28^{null} T cells—were detected in blood from patients with an ACS⁹ as previously described in patients with RA.¹⁰ CD4⁺CD28^{null} T cells are characterised by clonal restriction indicative of a reduced repertoire of antigens recognised by the T cell receptor complex in both patients with RA¹⁰ and patients with an ACS¹¹ when compared with controls. In line with this, T cells in coronary thrombi aspirated from the culprit lesion in the epicardial vessel in patients with an ACS are profoundly clonally restricted compared with circulating T cells.¹² Moreover, circulating T cells from patients with an ACS¹² and patients with RA¹³ showed clonal restriction when compared with controls. These findings indicate similar autoimmune responses against specific antigens in ACS and RA alike.

Anti-inflammatory drugs have been used for a long time in patients with RA and the anti-metabolite methotrexate was associated with a reduction in cardiovascular events in a recent meta-analysis.¹⁴ Among the novel anti-inflammatory biologic agents used in patients with RA, it will be interesting to learn about the effects on cardiovascular outcomes during long-term follow-up of therapeutic inhibition of tumour necrosis factor- α , inhibition of interleukin-1 β or antagonism of the interleukin-6 receptor, respectively. In turn, in patients with coronary artery disease, ongoing trials are evaluating the effects on cardiovascular events of methotrexate and inhibition of interleukin-1 β .^{7,15} It will be of great interest whether these trials confirm or refute the inflammatory hypothesis presented.

Funding

The authors received funding from the Swiss National Science Foundation (SPUM 33CM30-124112). Funding to pay the Open Access publication charges for this article was provided by Zurich Heart House Foundation.

References

1. Cross M, Smith E, Hoy D, Carmona L, Wolfe F, Vos T, Williams B, Gabriel S, Lassere M, Johns N, Buchbinder R, Woolf A, March L. The global burden of

rheumatoid arthritis: estimates from the global burden of disease 2010 study. *Ann Rheumat Dis* 2014;**73**:1316–1322.

2. Avina-Zubieta JA, Choi HK, Sadatsafavi M, Etrinan M, Esdaile JM, Lacaille D. Risk of cardiovascular mortality in patients with rheumatoid arthritis: a meta-analysis of observational studies. *Arthritis Rheum* 2008;**59**:1690–1697.
3. Aubry MC, Maradit-Kremers H, Reinalda MS, Crowson CS, Edwards WD, Gabriel SE. Differences in atherosclerotic coronary heart disease between subjects with and without rheumatoid arthritis. *J Rheumatol* 2007;**34**:937–942.
4. Karpouzas GA, Malpeso J, Choi TY, Li D, Munoz S, Budoff MJ. Prevalence, extent and composition of coronary plaque in patients with rheumatoid arthritis without symptoms or prior diagnosis of coronary artery disease. *Ann Rheum Dis* 2014;**73**:1797–1804.
5. Mantel Å, Holmqvist M, Jernberg T, Wällberg-Jonsson S, Askling J. Rheumatoid arthritis is associated with a more severe presentation of acute coronary syndrome and worse short-term outcome. *Eur Heart J* 2015;**36**:3413–3422.
6. Skeoch S, Bruce IN. Atherosclerosis in rheumatoid arthritis: is it all about inflammation? *Nat Rev Rheumatol* 2015;**11**:390–400.
7. Libby P, Ridker PM, Hansson GK. Progress and challenges in translating the biology of atherosclerosis. *Nature* 2011;**473**:317–325.
8. Pap T, Korb-Pap A. Cartilage damage in osteoarthritis and rheumatoid arthritis—two unequal siblings. *Nat Rev Rheumatol* 2015; doi: 10.1038/nrrheum.2015.95.
9. Liuzzo G, Kopecky SL, Frye RL, O'Fallon WM, Maseri A, Goronzy JJ, Weyand CM. Perturbation of the T-cell repertoire in patients with unstable angina. *Circulation* 1999;**100**:2135–2139.
10. Michel JJ, Turesson C, Lemster B, Atkins SR, Iclozan C, Bongartz T, Wasko MC, Matteson EL, Vallejo AN. CD56-expressing T cells that have features of senescence are expanded in rheumatoid arthritis. *Arthritis Rheum* 2007;**56**:43–57.
11. Liuzzo G, Goronzy JJ, Yang H, Kopecky SL, Holmes DR, Frye RL, Weyand CM. Monoclonal T-cell proliferation and plaque instability in acute coronary syndromes. *Circulation* 2000;**101**:2883–2888.
12. Klingenberg R, Brokopp CE, Grives A, Courtier A, Jaguszewski M, Pasqual N, Vlaskou Badra E, Lewandowski A, Gaemperli O, Hoerstrup SP, Maier W, Landmesser U, Luscher TF, Matter CM. Clonal restriction and predominance of regulatory T cells in coronary thrombi of patients with acute coronary syndromes. *Eur Heart J* 2015; **36**:1041–1048.
13. Wagner UG, Koetz K, Weyand CM, Goronzy JJ. Perturbation of the T cell repertoire in rheumatoid arthritis. *Proc Natl Acad Sci USA* 1998;**95**:14447–14452.
14. Micha R, Imamura F, Wyler von Ballmoos M, Solomon DH, Hernan MA, Ridker PM, Mozaffarian D. Systematic review and meta-analysis of methotrexate use and risk of cardiovascular disease. *Am J Cardiol* 2011;**108**:1362–1370.
15. Ridker PM, Thuren T, Zalewski A, Libby P. Interleukin-1 β inhibition and the prevention of recurrent cardiovascular events: rationale and design of the Canakinumab Anti-inflammatory Thrombosis Outcomes Study (CANTOS). *Am Heart J* 2011; **162**:597–605.