



---

Year: 2019

---

## Long-term prognostic value of coronary flow reserve in psoriasis patients

Piaserico, Stefano ; Osto, Elena ; Famoso, Giulia ; Montisci, Roberta ; De Michieli, Laura ; Zanetti, Irene ; Iliceto, Sabino ; Tona, Francesco

**Abstract:** BACKGROUND AND AIMS Psoriasis affects more than 3% of the general population and is associated with an increased risk of premature cardiovascular events and death. We assessed the prognostic role of coronary flow reserve (CFR) as a marker of coronary microvascular function in psoriasis patients asymptomatic for cardiovascular disease. METHODS We retrospectively analyzed 153 prospectively collected patients affected by psoriasis (123 male; age  $36 \pm 8$  years) without cardiovascular disease. CFR in the left anterior descending coronary artery was detected by transthoracic Doppler echocardiography, at rest, and during adenosine infusion. CFR was the ratio of hyperemic to resting diastolic flow velocity. CFR  $\geq 2.5$  was the cut off to define the presence of coronary microvascular dysfunction (CMD). RESULTS CMD was present in 23 patients (15%). Multivariable logistic regression analysis showed that CMD was associated with severe psoriasis (OR 3.1,  $p = 0.03$ ), psoriatic arthritis (OR 2.9,  $p = 0.03$ ), hypertension (OR 4.1,  $p = 0.009$ ), and time elapsing since psoriasis diagnosis  $>6$  years (OR 1.9,  $p = 0.03$ ). Patients with CFR  $\geq 2.5$  had a lower survival free from events ( $p < 0.0001$ ). CONCLUSIONS In psoriasis patients, CFR may be a reliable prognostic marker for cardiovascular event-free survival and may help identify patients at higher risk of developing cardiovascular complications. Whether novel biologic therapies able to reduce skin disease will improve CMD and prognosis in these patients needs to be further studied, prospectively.

DOI: <https://doi.org/10.1016/j.atherosclerosis.2019.08.009>

Posted at the Zurich Open Repository and Archive, University of Zurich

ZORA URL: <https://doi.org/10.5167/uzh-184904>

Journal Article

Accepted Version



The following work is licensed under a Creative Commons: Attribution-NonCommercial-NoDerivatives 4.0 International (CC BY-NC-ND 4.0) License.

Originally published at:

Piaserico, Stefano; Osto, Elena; Famoso, Giulia; Montisci, Roberta; De Michieli, Laura; Zanetti, Irene; Iliceto, Sabino; Tona, Francesco (2019). Long-term prognostic value of coronary flow reserve in psoriasis patients. *Atherosclerosis*, 289:57-63.

DOI: <https://doi.org/10.1016/j.atherosclerosis.2019.08.009>

Manuscript Number: ATH-D-19-00309R2

Title: Long-term prognostic value of coronary flow reserve in psoriasis patients

Article Type: Research paper

Section/Category: Clinical & Population Research

Keywords: psoriasis; coronary microcirculation; prognosis; coronary flow reserve; cardiovascular risk

Corresponding Author: Professor Francesco Tona,

Corresponding Author's Institution:

First Author: Stefano Piaserico

Order of Authors: Stefano Piaserico; Elena Osto; Giulia Famoso; Roberta Montisci; Laura De Michieli; Irene Zanetti; Sabino Iliceto; Francesco Tona

**Abstract: Background and Aims:** Psoriasis affects more than 3% of the general population and is associated with an increased risk of premature cardiovascular events and death. We assessed the prognostic role of coronary flow reserve (CFR) as a marker of coronary microvascular function in psoriasis patients asymptomatic for cardiovascular disease. **Methods:** We retrospectively analyzed 153 prospectively collected patients affected by psoriasis (123 male; age, 36±8 years) without cardiovascular disease. CFR in the left anterior descending coronary artery was detected by transthoracic Doppler echocardiography, at rest, and during adenosine infusion. CFR was the ratio of hyperemic to resting diastolic flow velocity. CFR ≤2.5 was the cut off to define the presence of coronary microvascular dysfunction (CMD).

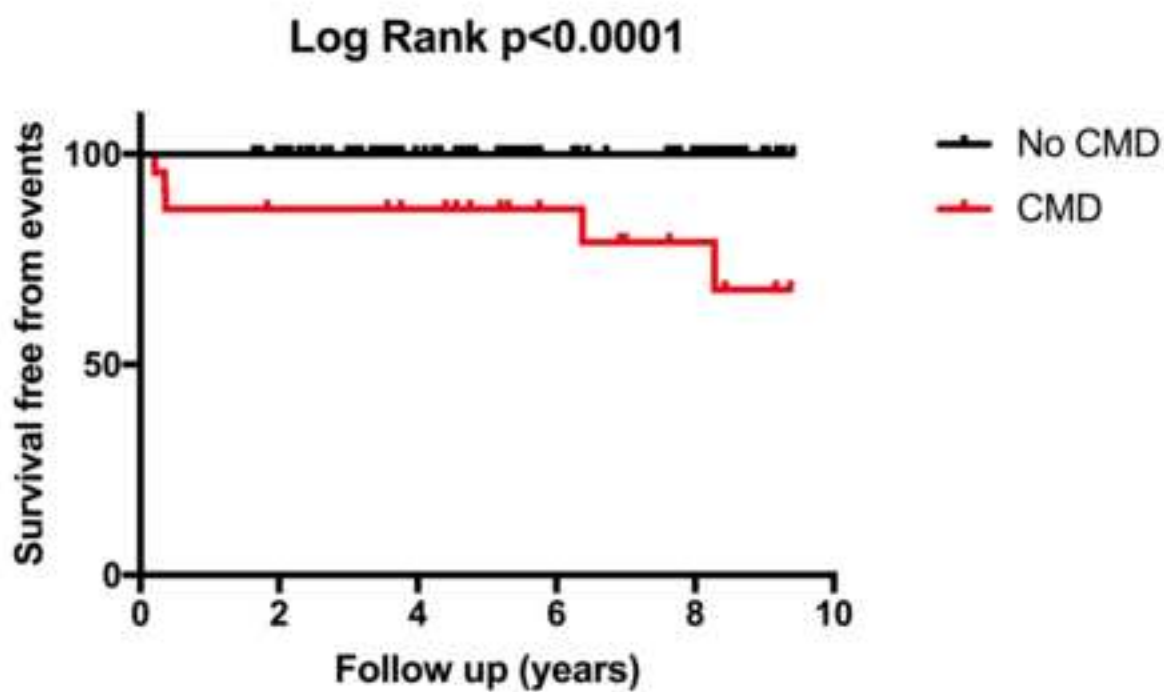
**Results:** CMD was present in 23 patients (15%). Multivariable logistic regression analysis showed that CMD was associated with severe psoriasis (OR 3.1, p=0.03), psoriatic arthritis (OR 2.9, p=0.03), hypertension (OR 4.1, p=0.009), and time elapsing since psoriasis diagnosis >6 years (OR 1.9, p=0.03). Patients with CFR ≤2.5 had a lower survival free from events (p<0.0001).

**Conclusions:** In psoriasis patients, CFR may be a reliable prognostic marker for cardiovascular event-free survival and may help to identify patients at higher risk of developing cardiovascular complications. Whether novel biologic therapies able to reduce skin disease will improve CMD and prognosis in these patients needs to be further studied, prospectively.

### Highlights

- This study analyzed the prognostic role of coronary flow reserve in psoriasis.
- 153 psoriatic patients without cardiovascular disease were included.
- Coronary microvascular dysfunction was present in 15% of patients.
- Coronary flow reserve may be a prognostic marker for events-free survival.

In psoriasis patients, the assessment of coronary microvascular dysfunction (CMD) may identify patients with worse cardiovascular outcome. These results provide a rationale for assessing CMD and to identify psoriasis patients at higher risk for developing cardiovascular complications.



1  
2 **Long-term prognostic value of coronary flow reserve in psoriasis patients**  
3  
4  
5  
6  
7  
8

9 Stefano Piaserico, MD, PhD<sup>a1</sup>; Elena Osto, MD, PhD<sup>b,c1</sup>; Giulia Famoso, MD, PhD<sup>d</sup>; Roberta  
10 Montisci, MD<sup>e</sup>; Laura De Michieli, MD<sup>d</sup>; Irene Zanetti, MD<sup>d</sup>; Sabino Iliceto, MD<sup>d</sup>; Francesco Tona,  
11  
12  
13 MD, PhD<sup>d\*</sup>  
14  
15  
16  
17  
18

19 <sup>a</sup>Dermatology Unit, Department of Medicine, <sup>b</sup> University Heart Center and <sup>c</sup>Institute of Clinical  
20 Chemistry, University Hospital Zurich, Zurich, Switzerland, Department of Cardiac, Thoracic,  
21 Vascular Sciences and Public Health, University of Padova, Padova, Italy, <sup>e</sup>Clinical Cardiology,  
22 Department of Medical Science and Public Health , University of Cagliari, Cagliari, Italy  
23  
24  
25  
26  
27  
28  
29  
30

31 *Corresponding author and person to whom reprint requests should be addressed:*

32 <sup>1</sup> these authors contributed equally.  
33  
34

35 \*Francesco Tona, MD, PhD

36 Department of Cardiac, Thoracic, Vascular Sciences and Public Health

37 University of Padova, Padova, Italy

38 Phone: +390498211844

39 Fax: +390498211802

40 Email: francesco.tona@unipd.it  
41  
42  
43  
44

45 **Running title:** Coronary microcirculation in psoriasis  
46  
47  
48  
49  
50  
51  
52  
53  
54  
55  
56  
57  
58  
59  
60  
61  
62  
63  
64  
65

## Abstract

**Background and Aims:** Psoriasis affects more than 3% of the general population and is associated with an increased risk of premature cardiovascular events and death. We assessed the prognostic role of coronary flow reserve (CFR) as a marker of coronary microvascular function in psoriasis patients asymptomatic for cardiovascular disease.

**Methods:** We retrospectively analyzed 153 prospectively collected patients affected by psoriasis (123 male; age,  $36\pm 8$  years) without cardiovascular disease. CFR in the left anterior descending coronary artery was detected by transthoracic Doppler echocardiography, at rest, and during adenosine infusion. CFR was the ratio of hyperemic to resting diastolic flow velocity.  $CFR \leq 2.5$  was the cut off to define the presence of coronary microvascular dysfunction (CMD).

**Results:** CMD was present in 23 patients (15%). Multivariable logistic regression analysis showed that CMD was associated with severe psoriasis (OR 3.1,  $p=0.03$ ), psoriatic arthritis (OR 2.9,  $p=0.03$ ), hypertension (OR 4.1,  $p=0.009$ ), and time elapsing since psoriasis diagnosis  $>6$  years (OR 1.9,  $p=0.03$ ). Patients with  $CFR \leq 2.5$  had a lower survival free from events ( $p<0.0001$ ).

**Conclusions:** In psoriasis patients, CFR may be a reliable prognostic marker for cardiovascular event-free survival and may help to identify patients at higher risk of developing cardiovascular complications. Whether novel biologic therapies able to reduce skin disease will improve CMD and prognosis in these patients needs to be further studied, prospectively.

**Key words:** psoriasis, coronary microcirculation, prognosis, coronary flow reserve, cardiovascular risk

## Introduction

1  
2 Patients affected by psoriasis, similarly to other chronic inflammatory systemic immune-mediated  
3  
4 diseases, such as rheumatoid arthritis (RA), systemic lupus erythematosus (SLE) and systemic  
5  
6 sclerosis (SSc), suffer from increased cardiovascular morbidity and mortality due to premature and  
7  
8 accelerated atherosclerosis (1).  
9

10  
11 Systemic chronic inflammation is regarded as a major causal mechanism leading to  
12  
13 atherosclerosis-driven clinical and subclinical coronary artery disease in patients with psoriasis and  
14  
15 other immune-mediated diseases. (2,3).  
16  
17

18  
19 Recent positive results obtained by monoclonal antibodies against interleukin (IL)-1b in secondary  
20  
21 prevention of cardiovascular events in patients with coronary artery disease and residual  
22  
23 inflammatory risk, further support inflammation as a therapeutic target in atherosclerosis (4).  
24  
25

26  
27 Indeed, in patients with severe psoriasis, biologic therapies (i.e. anti TNF $\alpha$ , anti-IL-12/23 and anti-  
28  
29 IL-17) were associated with favorable modulation of coronary plaque characteristics on the short  
30  
31 term and anti TNF $\alpha$  decreased risk for myocardial infarction over a longer period of treatment  
32  
33 (5,6).  
34  
35

36  
37 Coronary microvascular dysfunction (CMD) describes a disease entity common to various clinical  
38  
39 situations in which a reduced coronary flow reserve (CFR) (i.e. the ratio between blood flow during  
40  
41 maximal coronary vasodilation and resting flow) along with evidence of myocardial ischaemia are  
42  
43 not secondary to epicardial coronary artery stenosis (7). We previously reported in young patients  
44  
45 with psoriasis, without traditional cardiovascular risk factors or angiographic evidence for  
46  
47 coronary artery disease, higher prevalence of CMD detected by CFR measured by transthoracic  
48  
49 Doppler echocardiography (TDE). In these patients, the degree of CMD was directly correlated to  
50  
51 the disease severity evaluated by the Psoriasis Area Severity Index (PASI) (8) and CFR was  
52  
53  
54  
55  
56  
57  
58  
59  
60  
61  
62  
63  
64  
65

1 improved by anti-TNF $\alpha$  therapy, which is commonly considered as the first line biologic agent for  
2 the treatment of psoriasis (9).  
3

4  
5 Emerging data documents that CMD, despite the absence of obstructive CAD, is not a benign  
6  
7 condition. Indeed, in patients with systemic immune-mediated diseases like SSc, CMD is  
8  
9 associated to higher risk of adverse cardiovascular outcomes (10).  
10

11  
12 The starting hypothesis of our work is that even in patients with psoriasis the CMD may play a  
13  
14 prognostic role. Consequently, the aim and the novelty of the present study was to characterize in  
15  
16 patients with moderate-to-severe psoriasis the cardiovascular long-term prognostic value of  
17  
18 impaired CFR detected by TDE, as a cost-effective tool to risk-stratify young patients with CMD  
19  
20 without hemodynamically significant stenosis as detected by coronary multi-slice computed  
21  
22 tomography [MSCT].  
23  
24  
25  
26

## 27 28 29 30 31 **Material and Methods**

32  
33 This study is a retrospective analysis of prospectively collected data at a single center. We enrolled  
34  
35 153 consecutive patients affected by moderate-to-severe psoriasis (123 male; mean age, 36 $\pm$ 8  
36  
37 years, range 18-50), recruited between January 2009 and December 2015. All patients had a  
38  
39 diagnosis of moderate to severe psoriasis since at least 12 months, stable plaque psoriasis since at  
40  
41 least 2 months before screening. Patients were included if they met the following inclusion  
42  
43 criteria: available CFR and MSCT evaluation, age <50 years, no symptoms or history of  
44  
45 cardiovascular disease. The following risk factors for coronary artery disease were assessed at the  
46  
47 time of CFR evaluation: hypertension, diabetes mellitus, hypercholesterolemia, smoking, high-  
48  
49 sensitive C-reactive protein (hsCRP), family history of heart disease, body mass index (BMI). For  
50  
51 risk factors definition see Supplementary Material online. Exclusion criteria were high blood  
52  
53 pressure at CFR evaluation, history or clinical evidence of renal (serum creatinine >133  $\mu$ mol/L in  
54  
55  
56  
57  
58  
59  
60  
61  
62  
63  
64  
65



1 men and  $>120 \mu\text{mol/L}$  in women), or hepatic disease and malignant or infectious disease. The  
2 activity of psoriasis was determined using the validated disease-specific activity index PASI.  
3

#### 4 **Psoriasis Area Severity Index (PASI) evaluation**

5  
6  
7 The body is divided into four regions comprising the head, upper extremities, trunk, and lower  
8  
9  
10 extremities. In each of these areas, the fraction of total surface area affected is graded on a 0–6  
11  
12 scale (0 for no involvement up to 6 for greater than 90% involvement). The various body regions  
13  
14 are weighted to reflect their respective proportion of body surface area. The composite PASI score  
15  
16 is then calculated by multiplying the sum of the individual-severity scores for each region by the  
17  
18 weighted area-of-involvement score for that respective region, and then summing the four  
19  
20 resulting quantities. The highest potential PASI score is 72; the lowest is 0. PASI scores are nearly  
21  
22 continuous, with 0.1 increments within these values. PASI 5-10 defined moderate psoriasis,  
23  
24 PASI  $>10$  defined a severe psoriasis.  
25  
26  
27  
28  
29

#### 30 **Echocardiography methods and coronary flow velocity reserve assessment**

31  
32  
33 Transthoracic Doppler echocardiography was performed with a commercially available ultrasound  
34  
35 system (Vivid 7, GE Medical System, Inc., Hortem, Norway). Doppler echocardiography and CFR  
36  
37 assessment has been previously detailed (11-14). A  $\text{CFR} \leq 2.5$  was considered abnormal (15), and  
38  
39 the population was dichotomized according to this cutoff.  
40  
41  
42

#### 43 **MSCT coronary angiography protocol and interpretation**

44  
45  
46 Patients with abnormal CFR underwent to MSCT coronary angiography to exclude epicardial  
47  
48 significant CAD and to measure calcium score. Coronary MSCT was performed using a 64-slice  
49  
50 dual-source scanner (Definition, Siemens Medical System, Forchheim, Germany). MSCT protocol  
51  
52 and interpretation has been previously detailed (16).  
53  
54  
55

#### 56 **Adverse outcomes during follow-up**

57  
58  
59 Subjects were followed prospectively to a combined endpoint of major adverse cardiovascular  
60  
61  
62  
63  
64  
65

1 events (MACE). During a follow up performed every 3 months, records of patients reporting an  
2 event were reviewed by an events committee blinded to CFR evaluation and tabulated as death,  
3 nonfatal myocardial infarction (MI), nonfatal stroke; and hospital stay for congestive heart failure  
4 (CHF), angina, and other vascular events. Those with death, nonfatal MI, nonfatal stroke, or CHF  
5 hospital stay were categorized as having MACE. Angina and myocardial infarctions were defined  
6 by ESC guidelines (17,18).  
7  
8  
9

### 10 **Statistical analysis**

11 Continuous variables with no/mild skew were presented as mean  $\pm$  SD; skewed measures were  
12 represented as median with first and third quartiles (Q1-Q3). Discrete variables were summarized  
13 as frequencies and percentages. The distribution of the data was analysed with a 1-sample  
14 Kolmogorov-Smirnov test. Categorical variables were compared by the  $\chi^2$  test or the Fisher exact  
15 test as appropriate. Continuous data were compared by use of the 2-tailed paired or unpaired *t*  
16 test (for normally distributed data sets) or the Mann-Whitney *U* or Wilcoxon signed-rank test (for  
17 skewed variables). Stepwise logistic regression analysis was used to model normal versus  
18 abnormal CFR ( $\leq 2.5$ ) and risk factors. Baseline characteristics were chosen for entry into  
19 multivariable models on the basis of their discrimination between normal and abnormal CFR and  
20 on unadjusted association with CFR  $\leq 2.5$  of  $p \leq 0.1$ . In order to account for possible modulator  
21 effects, we then forced all other variables from Table 1 into the model, one at a time. A  
22 combination of forward and backward selection procedures was used to aid in determining the  
23 best model of factors independently associated with CFR  $\leq 2.5$ . Median values for age, severity of  
24 psoriasis and duration of psoriasis were selected as a cut point for simplicity in the multivariable  
25 analysis. Summary statistics for the regression models included the *c*-statistic (a measure of  
26 association of predicted probabilities and observed prevalence of a binary outcome) and  $R^2$  (re-  
27 scaled for use in logistic regression). As for the retrospective follow-up, stepwise logistic  
28  
29  
30  
31  
32  
33  
34  
35  
36  
37  
38  
39  
40  
41  
42  
43  
44  
45  
46  
47  
48  
49  
50  
51  
52  
53  
54  
55  
56  
57  
58  
59  
60  
61  
62  
63  
64  
65

1 regression analysis was also used to model event versus non event (as dependent variable) and  
2 CMD. Event-free survival curves were traced by use of the Kaplan-Meier method and compared by  
3 log-rank test. All tests were two-sided and statistical significance was accepted if the null  
4 hypothesis could be rejected at  $p < 0.05$ . Data were analyzed with SPSS software version 24.0  
5 (Chicago, SPSS, Inc., Chicago, Illinois). The authors had full access to the data and take full  
6 responsibility for its integrity. All authors have read and agree to the manuscript as written. The  
7 study protocol was reviewed and approved by the institutional ethical committee. All participants  
8 gave their written informed consent to participate in the study.

### 20 **Sample size determination**

21 Although the study sample size was limited, a priori power calculations based on a one tailed t-test  
22 to obtain a power of 0.80, a significance level of 0.05 and an effect size based on published values  
23 of standard deviations and MACE incidence in moderate-to-severe psoriasis, would estimate that  
24 with 1:1 matching of patients without CMD and patients with CMD and an assumed relative  
25 survival free from MACE of 0.8 in the group with CMD, we would need approximately 34 patients  
26 in each group to show a difference.

27 A post-hoc power analysis (assuming  $\alpha = 0.05$ ) estimated that with 130 patients without CMD and  
28 23 patients with CMD, with an event incidence of 0% in patients without CMD and 21% in patients  
29 with CMD, we reject the null hypothesis of equal survival with 94.1% power.

## 48 **Results**

### 51 **Baseline characteristics**

52 There were no adverse reactions to adenosine. The baseline characteristics of the 153 patients are  
53 summarized in Table 1. The mean duration of follow-up was  $5.53 \pm 2.42$  years (range, 0.6 to 9.4  
54 years). The study population included 24 (15.7%) subjects with hypertension, 57 (37.2%) with  
55

1 hypercholesterolemia, 52 (33.9%) current cigarette smokers and 36 (23.5%) with a family history  
2 of heart disease. No patient was diabetic. Mean BMI was 26.3±4. Total cholesterol was  
3  
4  
5 194±43mg/dL, and triglycerides were 110± 61mg/dL. In the whole study group CFR was 3.16±0.79.  
6  
7 On individual patient analysis, CFR was >2.5 in 130 patients (84.9%), and ≤2.5 in 23 patients  
8  
9 (15.1%). The presence of epicardial artery stenosis was excluded by MSCT in all of 23 patients with  
10  
11 CFR≤2.5 and Calcium Score was<10 in all patients with CFR≤2.5. For hemodynamic parameters  
12  
13 during CFR evaluation see the Supplementary results online.  
14  
15

### 16 17 **Characteristics of patients with CMD (CFR≤2.5)**

18 Patients with CMD were older (40±9 vs 37±7 years, p=0.03), had a greater severity of psoriasis  
19  
20 (PASI 18 [11-20] vs 13 [11-15], p=0.02), a longer time elapsing since psoriasis diagnosis (17 [10-26]  
21  
22 vs 14 [9-21] years, p=0.03), and more frequently had psoriatic arthritis (52.4% vs 29.3%, p=0.03),  
23  
24 hypertension (38.1% vs 12.0%, p=0.003) and family history of heart disease (42.9% vs 20.3%,  
25  
26 p=0.024) (Table 1).  
27  
28  
29  
30  
31

### 32 33 **Factors associated with CMD (CFR≤2.5)**

34 In unadjusted logistic regression analysis, the significant or marginally significant (p≤0.1) risk  
35  
36 factors were age (p=0.03), time elapsing since psoriasis diagnosis >6 years (p=0.03), hypertension  
37  
38 (p=0.002), PASI >10 (p=0.09), and PsA (p=0.1). Factors independently associated with CMD are  
39  
40 summarized in Table 2. When modelled using a stepwise regression and adjusting for baseline  
41  
42 differences and predictors at unadjusted logistic regression analysis, the factors independently  
43  
44 associated with CMD were time elapsing since psoriasis diagnosis >6 years and hypertension  
45  
46 (p=0.03 and p=0.007, respectively) (Table 2). The inclusion of heart rate-pressure product did not  
47  
48 greatly affect the model and no other clinical characteristic entered as a significant covariate. To  
49  
50 exclude the modulating effect of other variables, we also added variables marginally significant in  
51  
52 unadjusted analysis (model 2). In this model, PASI >10 and PsA were also independently associated  
53  
54  
55  
56  
57  
58  
59  
60  
61  
62  
63  
64  
65

1 with CMD, but their addition to the model did not significantly affect the relationship between  
2 CMD and hypertension or time elapsing since psoriasis diagnosis >6 years (Table 2). When other  
3 conditions (current smoking, BMI, and total cholesterol) were forced into the model (potentially  
4 overfitting it), time elapsing since psoriasis diagnosis >6 years and hypertension remained  
5 significantly associated with CMD ( $p=0.03$  and  $p=0.02$ , respectively) (model 3).  
6  
7  
8  
9  
10  
11

### 12 **Major adverse cardiac events**

13 A total of 5 patients experienced a MACE. All of them had a  $CFR \leq 2.5$  at the beginning of the study.  
14

15 Three patients experienced a type 1 myocardial infarction. One vessel critical epicardial stenosis  
16 was diagnosed in 2 patients, which were treated with percutaneous revascularization. Three  
17 vessels critical epicardial stenosis was diagnosed in only one patient treated with surgical  
18 revascularization. Epicardial coronary arteries were normal in the other 2 patients with MINOCA  
19 (myocardial infarction with non-obstructive coronary arteries) (Table 3) (19).  
20  
21  
22  
23  
24  
25  
26  
27  
28  
29  
30

31 The baseline features of patients with and without cardiovascular events are shown in Table 4.  
32

33 Patients with cardiovascular events were older ( $p=0.04$ ), had an higher PASI ( $p=0.001$ ), longer time  
34 elapsing since psoriasis diagnosis ( $p=0.04$ ), and higher prevalence of hypertension ( $p=0.002$ ).  
35  
36  
37

38 Cardiological therapy and specific therapy for psoriasis were comparable in the two groups.  
39

40 Hyperemic (during adenosine infusion) diastolic coronary flow and CFR were lower in patients with  
41 MACE (57 [48-61] vs 70 [60-80] cm/s,  $2.1 \pm 0.2$  vs  $3.1 \pm 0.7$ ;  $p=0.03$  and  $p=0.001$ , respectively). CMD  
42 was present in 18 (12.2%) patients without MACE and in all 5 (100%) patients with MACE  
43 ( $p < 0.0001$ ). Figure 1 shows the cumulative survival free from cardiovascular events according to  
44 the presence of CMD. The prevalence of hypertension was the only difference between patients  
45 with CMD and MACE and patients with CMD without MACE (80% vs 27.8%,  $p=0.03$ ). PASI tended  
46 to be higher in patients with CMD and MACE compared with patients with CMD without MACE  
47 ( $p=0.06$ ). In unadjusted logistic regression analysis, CMD was a significant risk factor for MACE (OR  
48  
49  
50  
51  
52  
53  
54  
55  
56  
57  
58  
59  
60  
61  
62  
63  
64  
65

1  
2  
3  
4  
5  
6  
7  
8  
9  
10  
11  
12  
13  
14  
15  
16  
17  
18  
19  
20  
21  
22  
23  
24  
25  
26  
27  
28  
29  
30  
31  
32  
33  
34  
35  
36  
37  
38  
39  
40  
41  
42  
43  
44  
45  
46  
47  
48  
49  
50  
51  
52  
53  
54  
55  
56  
57  
58  
59  
60  
61  
62  
63  
64  
65

9.9 (95% CI 6.1-15.8),  $p < 0.0001$ . Univariable prediction of cardiovascular events is presented in Table 5.

## Discussion

In this study, we found CFR to be reduced in 15% of asymptomatic psoriasis patients without evidence of epicardial coronary stenosis. Of note, our study patients were relatively young (mean age 36 years) and with a rather low prevalence of traditional CV risk factors. This is in agreement with previous studies that reported abnormal CFR in patients with psoriasis or other systemic inflammatory diseases (such as SLE, ankylosing spondylitis, RA, inflammatory bowel disease) with normal coronary arteries, indicating that microcirculation may be affected before the occurrence of coronary atherosclerosis (1,8).

Most importantly, CFR was found to predict MACE-free survival in our psoriasis patients. Patients with CMD had significantly worse outcome than patients without CMD. Twenty one percent of psoriasis patients with an impaired CFR developed a MACE. This is an impressive outcome considering the age of our study patients, ranging from 18 to 50 years.

Patients affected by severe psoriasis show increased risk of premature CV events and death (20-22). Traditional CV risk factors appear to contribute to cardiovascular events development in patients with severe psoriasis. However, the increased risk noted in this common inflammatory condition is not completely captured by traditional risk assessment, and persists beyond adjustment for these factors. The analysis of the General Practice Research Database showed that patients with severe psoriasis had a 53% (23) and 57% (20) increased risk for major adverse cardiac events and CV mortality, respectively, after adjusting for age, gender, diabetes, hypertension, tobacco use, and hyperlipidemia.

1  
2  
3  
4  
5  
6  
7  
8  
9  
10  
11  
12  
13  
14  
15  
16  
17  
18  
19  
20  
21  
22  
23  
24  
25  
26  
27  
28  
29  
30  
31  
32  
33  
34  
35  
36  
37  
38  
39  
40  
41  
42  
43  
44  
45  
46  
47  
48  
49  
50  
51  
52  
53  
54  
55  
56  
57  
58  
59  
60  
61  
62  
63  
64  
65

As inflammation is a critical component of atherosclerosis pathophysiology, chronic inflammation in psoriasis patients may play a significant role in the shared mechanisms driving accelerated-atherosclerosis. During a psoriasis flare, there are more than 1 billion immune cells activated within the body. Psoriasis is characterized by increased pro-inflammatory cytokine levels and activation of myeloid dendritic cells, neutrophils, and Th cells (mostly Th17). T cells secrete intermediates (e.g., IL-17F, IL-17A, and IL-22), which, in turn, activate keratinocytes and further stimulate the production of pro-inflammatory cytokines. IL-17A, IL-1, and TNF- $\alpha$  play also a role in atherosclerosis by driving cell-mediated immunity.

The prognostic value of an impaired CFR has been well demonstrated in several groups of patients, even without coronary artery disease (24-26). In fact, impaired CFR might not only represent the extent of disease in conductance vessels but might also be related to pure microvascular vasomotor dysfunction, because in the absence of hemodynamically significant stenosis maximal increase of blood flow is predominantly determined by resistance vessels of the coronary microcirculation. Intriguingly, a reduced CFR has been showed to predict a worse cardiovascular prognosis also in asymptomatic patients with diabetes (27) or systemic sclerosis (10). In our study patients, CFR impairment was not associated to significant coronary artery disease. These findings are suggestive of CMD, which may represent an early marker of accelerated coronary atherosclerosis and contribute to the increased cardiovascular morbidity and mortality in these patients. In keeping with this, our study suggests that CMD may precede, at least in some cases, the onset of an epicardial disease, susceptible of percutaneous or surgical revascularization. Indeed, coronary arteries were normal at MSCT at the time of CFR assessment in all our patients with type 1 myocardial infarction.

Systemic inflammation has been shown to be an important risk factor for CMD, similarly to traditional CV risk factors, such as smoking, diabetes mellitus, hypertension, and hyperlipidemia

1  
2  
3  
4  
5  
6  
7  
8  
9  
10  
11  
12  
13  
14  
15  
16  
17  
18  
19  
20  
21  
22  
23  
24  
25  
26  
27  
28  
29  
30  
31  
32  
33  
34  
35  
36  
37  
38  
39  
40  
41  
42  
43  
44  
45  
46  
47  
48  
49  
50  
51  
52  
53  
54  
55  
56  
57  
58  
59  
60  
61  
62  
63  
64  
65

(1, 28-31). In our population, a blunted CFR was associated with a severe psoriasis and the presence of psoriatic arthritis, both associated with a higher systemic inflammatory burden (32, 33). In this context, a psoriasis/psoriatic arthritis-specific element appears to contribute to the CMD and the increased cardiovascular risk associated with psoriasis, although the precise nature of this remains to be determined. Soluble factors including increased levels of the pro-inflammatory cytokines, TNF- $\alpha$  and IL-17, may be important. TNF- $\alpha$  may impair the activation of endothelial nitric oxide synthase (eNOS), degrade eNOS mRNA, alter vasomotor function acting on vascular smooth muscle cells and induces oxidative stress by increasing the production of reactive oxygen species (34). Some studies reported that also in healthy individuals circulating levels of several different pro-inflammatory cytokines, in particular IL-6 and TNF- $\alpha$ , are associated with risk of CV outcomes in an approximately log-linear manner (35, 36). IL-6 is able to promote differentiation of naive Th cells into Th17 cells, that represent the most important pathogenic cell in psoriasis lesions development (37). In the last years, inhibitors of IL-17 and TNF- $\alpha$  have become available in the treatment of psoriasis and other inflammatory diseases. Non-randomized data from biological registries suggest that TNF- $\alpha$  blocking therapy could reduce CV risk in patients affected by rheumatological and dermatological diseases (38).

We have recently reported that CMD improves after treatment with TNF- $\alpha$  inhibitors in patients with established psoriasis (9). Therefore, it is plausible that chronic inflammation represents the linking mechanism between psoriasis, CMD and increased CV risk, and that anti-inflammatory treatment may help to reduce this risk.

The results of the present study have a potential impact in the management of patients with psoriasis. Cardiovascular risk stratification of patients with psoriasis remains a difficult clinical problem. Since psoriasis patients face an increased risk of coronary artery disease, it is important to identify patients at higher risk for developing cardiovascular complications in order to reduce



1 morbidity and mortality. Screening by noninvasive Doppler-derived CFR might represent a  
2 valuable, safe and inexpensive tool for assessing the presence and prognostic effect of macro- and  
3  
4 microvascular disease in patients with psoriasis. In our opinion no further cardiological deepening  
5  
6 might be justified for patients with  $CFR > 2.5$ , because of their low risk for future cardiac events. On  
7  
8 the contrary, strict follow-up should be considered for patients with  $CFR \leq 2.5$ . In these higher risk  
9  
10 patients, an aggressive strategy, including the careful management of conventional CV risk factors,  
11  
12 seems to represent the logical approach. Optimizing cardiovascular prevention and care in this  
13  
14 patient population should involve close liaison between cardiologists and dermatologists.  
15  
16

17  
18 Furthermore, the control of psoriasis and its related systemic inflammation using powerful drugs  
19  
20 blocking major drivers of skin and vascular inflammation (namely  $TNF-\alpha$  and IL-17), may eventually  
21  
22 impart benefits toward overall CV risk. Recently, CANTOS study showed that IL-1 inhibition by  
23  
24 Canakinumab inhibition given once every three months among patients with a prior myocardial  
25  
26 infarction and a persistent increase in C-reactive protein reduced the hazard ratio for  
27  
28 cardiovascular events of 15% compared with placebo (4).  
29  
30  
31  
32  
33

34  
35 Further studies need to provide more insights on the duration of improvement of CMD obtained  
36  
37 with appropriate psoriasis therapy during time and the real impact of a recover of blunted CFR on  
38  
39 future cardiovascular outcomes in these patients.  
40  
41  
42

43  
44 As outlined above, the mechanism of atherogenesis as well as the coronary microvascular  
45  
46 dysfunction is mainly considered an inflammatory process. Supporting this view, many studies  
47  
48 have shown that also a low-grade systemic inflammation leads to an increased risk of  
49  
50 cardiovascular events. Diet is one of the most important factors that can affect the inflammatory  
51  
52 process and oxidative stress, and it could actually represent a good and relatively easy point of  
53  
54 intervention to reduce the risk of cardiovascular disease. Indeed, some foods may have a  
55  
56 proinflammatory effect and increase oxidative stress, while others may have a beneficial effect  
57  
58  
59  
60  
61  
62  
63  
64  
65

1  
2  
3  
4  
5  
6  
7  
8  
9  
10  
11  
12  
13  
14  
15  
16  
17  
18  
19  
20  
21  
22  
23  
24  
25  
26  
27  
28  
29  
30  
31  
32  
33  
34  
35  
36  
37  
38  
39  
40  
41  
42  
43  
44  
45  
46  
47  
48  
49  
50  
51  
52  
53  
54  
55  
56  
57  
58  
59  
60  
61  
62  
63  
64  
65

(39). For example, the Western diet, mainly characterized by meat consumption, is positively associated with inflammatory biomarkers, while the Mediterranean diet has been shown to reduce some inflammatory biomarkers. Several studies have evaluated the role of individual nutrients on psoriasis (40). In particular, the greater adherence to the Mediterranean diet is associated with a lesser severity of psoriasis, both objective and subjective, independently of the modality of treatment and the presence of obesity, and lower levels of C-reactive protein (41). In this context, we are not able to exclude the possible effect of the diet on the microcirculatory function in our patients. However, this influence seems unlikely as our patients' diet did not differ significantly and our patients also came largely from the same geographical area and not from areas with different eating habits.

Some important limitations need to be taken into account in the present study. It is a retrospective study, with a small sample size and with few events. The small sample size and few events did not allow us to perform a survival multivariable analysis and mostly error and non-reproducible may also occur. Even though caution must be applied while extrapolating our results, we believe our sample might be representative of the region since our medical center is a high volume reference for psoriasis and CFR assessment. There may be an inherent selection bias because of its nonrandomized design. A large-scale randomized controlled trial would be ideal. Further larger trials with larger patient populations should be performed to confirm our data and, more importantly, to establish the potential beneficial role of reversing CMD by interventional strategies for long-term atherosclerotic disease progression.

### **Clinical perspective**

Our findings confirm a novel role of coronary microcirculation in the pathophysiology of cardiovascular disease in severe psoriasis. CFR by TDE may be a noninvasive, simple, and objective diagnostic tool for the assessment and follow-up of coronary microvascular function in these

1 patients. Moreover, our data may improve the management and treatment of psoriasis in its  
2 cardiac asymptomatic initial phase and may explain why the disease is associated with increased  
3 cardiovascular morbidity and risk, although molecular mechanisms involved need to be further  
4 investigated.  
5  
6  
7  
8  
9

## 10 **Conclusions**

11  
12 The results of the present study provide evidence that CMD is associated with a greater severity of  
13 psoriasis and the presence of psoriatic arthritis, both increasing the burden of inflammation, and  
14 hypertension. Moreover, our study suggests that psoriasis patients with CMD carry a higher risk of  
15 cardiovascular events over a long-term follow up. These results not only provide a rationale for  
16 using CFR determination for cardiovascular risk assessment in psoriasis patients, but also reinforce  
17 the concept of systemic inflammation as a prognostic parameter for CMD and, eventually, for  
18 adverse long-term CV outcome. Whether novel biologic therapies able to reduce skin disease will  
19 improve CMD and prognosis in these patients needs to be further studied, prospectively.  
20  
21  
22  
23  
24  
25  
26  
27  
28  
29  
30  
31  
32  
33  
34  
35  
36  
37  
38  
39  
40  
41  
42  
43  
44  
45  
46  
47  
48  
49  
50  
51  
52  
53  
54  
55  
56  
57  
58  
59  
60  
61  
62  
63  
64  
65

## References

1. Faccini A, Kaski JC, Camici PG. Coronary microvascular dysfunction in chronic inflammatory rheumatoid diseases. *Eur Heart J* 2016;37(23):1799-1806.
2. Gelfand JM, Neimann AL, Shin DB, Wang X, Margolis DJ, et al. Risk of myocardial infarction in patients with psoriasis. *JAMA* 2006;296(14):1735-41.
3. Lerman JB, Joshi AA, Chaturvedi A, Aberra TM, Dey AK, et al. Coronary Plaque Characterization in Psoriasis Reveals High-Risk Features That Improve After Treatment in a Prospective Observational Study. *Circulation* 2017;136(3):263-276.
4. Ridker PM, Everett BM, Thuren T, MacFadyen JG, Chang WH, et al. CANTOS Trial Group. Antiinflammatory Therapy with Canakinumab for Atherosclerotic Disease. *N Engl J Med* 2017;377(12):1119-1131.
5. Elnabawi YA, Dey AK, Goyal A, Groenendyk JW, Chung JH, et al. Coronary artery plaque characteristics and treatment with biologic therapy in severe psoriasis: results from a prospective observational study. *Cardiovasc Res*. 2019;115:721-728.
6. Wu JJ, Poon K-YT, Channual JC, Shen AY-J. Association between tumor necrosis factor inhibitor therapy and myocardial infarction risk in patients with psoriasis. *Archives of Dermatology* 2012;148:1244-1250.
7. Camici PG, Crea F. Coronary microvascular dysfunction. *N Engl J Med* 2007;356:830–840.
8. Osto E, Piaserico S, Maddalozzo A, Forchetti G, Montisci R, et al. Impaired coronary flow reserve in young patients affected by severe psoriasis. *Atherosclerosis* 2012;221(1):113-117.
9. Piaserico S, Osto E, Famoso G, Zanetti I, Gregori D, et al. Treatment with tumor necrosis factor inhibitors restores coronary microvascular function in young patients with severe psoriasis. *Atherosclerosis* 2016;251:25-30.
10. Vacca A, Montisci R, Garau P, Siotto P, Piga M, et al. Prognostic impact of coronary microcirculation abnormalities in systemic sclerosis: A prospective study to evaluate the role of noninvasive tests. *Arthritis Res Ther* 2013;15:R8.
11. Devereux RB, Alonso DR, Lutas EM, Gottlieb GJ, Campo E, et al. Echocardiographic assessment of left ventricular hypertrophy: comparison to necropsy findings. *Am J Cardiol* 1986; 57:450-458.
12. Nagueh SF, Appleton CP, Gillebert TC, Marino PN, Oh JK, et al. Recommendations for the evaluation of left ventricular diastolic function by echocardiography. *J Am Soc Echocardiogr* 2009; 22:107-133.
13. Redfield MM, Jacobsen SJ, Burnett JC Jr., Mahoney DW, Balley KR, et al. Burden of systolic and diastolic ventricular dysfunction in the community: appreciating the scope of the heart failure epidemic. *JAMA* 2003; 289:194-202.
14. Tona F, Caforio ALP, Montisci R, Gambino A, Angelini A, et al. Coronary flow velocity pattern and coronary flow reserve by contrast-enhanced transthoracic echocardiography predict long-term outcome in heart transplantation. *Circulation*. 2006;114(Suppl. I):I-49–55.
15. Rubinshtein R, Yang EH, Rihal CS, Prasad A, Lennon RJ, et al. Coronary microcirculatory vasodilator function in relation to risk factors among patients without obstructive coronary disease and low to intermediate Framingham score. *Eur Heart J*. 2009;31:936–942.
16. Russo V, Zavalloni A, Bacci Reggiani ML, Buttazzi K, Gostoli V, et al. Incremental prognostic value of coronary CT angiography in patients with suspected coronary artery disease. *Circ Cardiovasc Imaging* 2010; 3:351-359.

17. Thygesen K, Alpert JS, Jaffe AS, Chaitman BR, Bax JJ, et al. Executive Group on behalf of the Joint European Society of Cardiology (ESC)/American College of Cardiology (ACC)/American Heart Association (AHA)/World Heart Federation (WHF) Task Force for the Universal Definition of Myocardial Infarction. *J Am Coll Cardiol* 2018;18:2231-2264.
18. Roffi M, Patrono C, Collet JP, Mueller C, Valgimigli M, et al. ESC Scientific Document Group. 2015 ESC Guidelines for the management of acute coronary syndromes in patients presenting without persistent ST-segment elevation: Task Force for the Management of Acute Coronary Syndromes in Patients Presenting without Persistent ST-Segment Elevation of the European Society of Cardiology (ESC). *Eur Heart J* 2016; 37, 267–315.
19. Tamis-Holland JE, Jneid H. Myocardial Infarction with nonobstructive coronary arteries (MINOCA): It's time to face reality! *J Am Heart Assoc.* 2018;7(13). pii: e009635.
20. Mehta NN, Azfar RS, Shin DB, Neimann AL, Troxel AB, et al. Patients with severe psoriasis are at increased risk of cardiovascular mortality: cohort study using the General Practice Research Database. *Eur Heart J* 2010; 31: 1000–1006.
21. Gelfand JM, Troxel AB, Lewis JD, Kurd SK, Shin DB, et al. The risk of mortality in patients with psoriasis: results from a population-based study. *Arch Dermatol* 2007; 143: 1493–1499.
22. Brauchli YB, Jick SS, Miret M, Meier CR. Psoriasis and risk of incident myocardial infarction, stroke or transient ischaemic attack: an inception cohort study with a nested case-control analysis. *Br J Dermatol* 2009;160:1048–1056.
23. Mehta NN, Yu Y, Pinnelas R, Krishnamoorthy P, Shin DB, et al. Attributable risk estimate of severe psoriasis on major cardiovascular events. *Am J Med* 2011;124:775e1-775e6.
24. Sicari R, Rigo F, Cortigiani L, Gherardi S, Galderisi M, et al. Additive prognostic value of coronary flow reserve in patients with chest pain syndrome and normal or near-normal coronary arteries. *Am J Cardiol* 2009;103:626–631.
25. Nakanishi K, Fukuda S, Shimada K, Miyazaki C, Otsuka K, et al. Impaired coronary flow reserve as a marker of microvascular dysfunction to predict long-term cardiovascular outcomes, acute coronary syndrome and the development of heart failure. *Circ J* 2012;76: 1958-1964.
26. Cortigiani L, Rigo F, Gherardi S, Galderisi M, Bovenzi F, et al. Prognostic meaning of coronary microvascular disease in type 2 diabetes mellitus: a transthoracic Doppler echocardiographic study. *J Am Soc Echocardiogr* 2014;27(7):742-748.
27. Kawata T, Daimon M, Hasegawa R, Toyoda T, Sekine T, et al. Prognostic value of coronary flow reserve assessed by transthoracic Doppler echocardiography on long-term outcome in asymptomatic patients with type 2 diabetes without overt coronary artery disease. *Cardiovascular Diabetology* 2013, 12:121-128.
28. Arroyo-Espiguero R, Mollichelli N, Avanzas P, Zouridakis E, Newey VR, et al. Chronic inflammation and increased arterial stiffness in patients with cardiac syndrome X. *Eur Heart J* 2003;24:2006–2011.
29. Caliskan M, Erdogan D, Gullu H, Yilmaz S, Gursoy Y, et al. Impaired coronary microvascular and left ventricular diastolic functions in patients with ankylosing spondylitis. *Atherosclerosis* 2008; 196: 306–312.
30. Recio-Mayoral A, Mason JC, Kaski JC, Rubens MB, Harari OA, et al. Chronic inflammation and coronary microvascular dysfunction in patients without risk factors for coronary artery disease. *Eur Heart J* 2009; 30: 1837–1843.
31. Kaufmann PA, Gneccchi-Ruscione T, Di TM, Schafers KP, Luscher TF, et al. Coronary heart disease in smokers: vitamin C restores coronary microcirculatory function. *Circulation* 2000;102:1233–1238.

- 1 32. Asahina A, Umezawa Y, Yanaba K, Nakagawa H. Serum C-reactive protein levels in Japanese  
2 patients with psoriasis and psoriatic arthritis: Long-term differential effects of biologics. *J*  
3 *Dermatol.* 2016 Jul;43(7):779-784.
- 4 33. Snekvik I, Nilsen TIL, Romundstad PR, Saunes M. Psoriasis and cardiovascular disease risk  
5 factors: the HUNT Study, Norway. *J Eur Acad Dermatol Venereol.* 2018 May;32(5):776-782.
- 6 34. Zhang H, Park Y, Wu J, Chen Xp, Lee S, et al. Role of TNF-alpha in vascular dysfunction. *Clin*  
7 *Sci* 2009;116(3):219-230.
- 8 35. Woodward M, Welsh P, Rumley A, Tunstall-Pedoe H, Lowe GD. Do inflammatory  
9 biomarkers add to the discrimination of cardiovascular disease after allowing for social  
10 deprivation? Results from a 10-year cohort study in Glasgow, Scotland. *Eur Heart J.* 2010  
11 Nov;31(21):2669-2675.
- 12 36. Kaptoge S, Seshasai SR, Gao P, Freitag DF, Butterworth AS, et al. Inflammatory cytokines  
13 and risk of coronary heart disease: new prospective study and updated meta-analysis. *Eur*  
14 *Heart J.* 2014 Mar;35(9):578-589.
- 15 37. Beringer A, Noack M, Miossec P. IL-17 in Chronic Inflammation: from discovery to  
16 targeting. *Trends Mol Med* 2016;22(3):230-241.
- 17 38. Puig L. Cardiometabolic comorbidities in psoriasis and psoriatic arthritis. *Int J Mol Sci* 2017  
18 25;19:58-74.
- 19 39. Minihane AM, Vinoy S, Russell WR, Baka A, Roche HM, et al. Low-grade inflammation, diet  
20 composition and health: current research evidence and its translation. *Br J Nutr.*  
21 2015;114:999-1012.
- 22 40. Molina-Leyva A, Cuenca-Barrales C, Vega-Castillo JJ, Ruiz-Carrascosa JC, Ruiz-Villaverde R.  
23 Adherence to mediterranean diet in spanish patients with psoriasis: cardiovascular  
24 benefits? *Dermatol Ther.* 2019;32:e12810.
- 25 41. Phan C, Touvier M, Kesse-Guyot E, Adjibade M, Hercberg S, et al. Association  
26 between mediterranean anti-inflammatory dietary profile and severity of psoriasis: results  
27 from the NutriNet-Santé Cohort. *JAMA Dermatol.* 2018;154:1017-1024.
- 28
- 29
- 30
- 31
- 32
- 33
- 34
- 35
- 36
- 37
- 38
- 39
- 40
- 41
- 42
- 43
- 44
- 45
- 46
- 47
- 48
- 49
- 50
- 51
- 52
- 53
- 54
- 55
- 56
- 57
- 58
- 59
- 60
- 61
- 62
- 63
- 64
- 65

## Funding

1  
2 Dr. Osto is recipient of the Swiss National Science Foundation PRIMA Grant (PR00P3\_179861/1)  
3  
4  
5 and of the Swiss Card-Onco-Grant (Alfred and Annemarie von Sick Grant) at the Institute of Clinical  
6  
7 Chemistry, University Hospital Zurich, Zurich, Switzerland.  
8  
9

## Author contributions

10 **Stefano Piaserico:** conceived of the presented idea, wrote the manuscript

11 **Elena Osto:** conceived of the presented idea, wrote the manuscript

12 **Giula Famoso:** Performed the CFR and contibuted to the analysis of the results

13 **Roberta Montisci:** performed the statistical analysis

14 **Laura De Michieli:** Performed the CFR and contibuted to the analysis of the results

15 **Irene Zanetti:** collected the data

16 **Sabino Iliceto:** supervised the project

17 **Francesco Tona:** conceived of the presented idea, designed and directed the project

## Figures legends

**Figure 1:** Kaplan Meier cardiac event-free survival curves: comparison of patients with or without CMD ( $p < 0.0001$ ).

1  
2  
3  
4  
5  
6  
7  
8  
9  
10  
11  
12  
13  
14  
15  
16  
17  
18  
19  
20  
21  
22  
23  
24  
25  
26  
27  
28  
29  
30  
31  
32  
33  
34  
35  
36  
37  
38  
39  
40  
41  
42  
43  
44  
45  
46  
47  
48  
49  
50  
51  
52  
53  
54  
55  
56  
57  
58  
59  
60  
61  
62  
63  
64  
65



## \*Point-by-Point Response

Reviewer #1: The Authors are mentioning MINOCA in the revised version (page 8); however, a proper reference to this type of MI (not known by general Readers) is missing (10.1161/JAHA.118.009635).

Thank you for your suggestion. We added a reference related to MINOCA (new ref. 19)

**Statement of Originality – Atherosclerosis**

**Manuscript Title:** Long-term prognostic value of coronary flow reserve in psoriasis patients

**List of all Authors:** Stefano Piaserico, MD, PhD; Elena Osto, MD, PhD; Giulia Famoso, MD, PhD; Roberta Montisci, MD; Laura De Michieli, MD; Irene Zanetti, MD; Sabino Iliceto, MD; Francesco Tona, MD, PhD

**Corresponding Author:** Francesco Tona

This statement is to certify that all authors have seen and approved the manuscript being submitted, have contributed significantly to the work, attest to the validity and legitimacy of the data and its interpretation, and agree to its submission to the Atherosclerosis. We attest that the article is the Authors' original work, has not received prior publication and is not under consideration for publication elsewhere.

On behalf of all Co-Authors, the corresponding Author shall bear full responsibility for the submission.

**DIPARTIMENTO DI SCIENZE CARDIOLOGICHE,  
TORACICHE E VASCOLARI**  
CLINICA CARDIOLOGICA  
Direttore: Prof. Sabino ILCETO



**UNIVERSITÀ  
DEGLI STUDI  
DI PADOVA**

via Giustiniani, 2  
35100 Padova  
tel +39 049 8211844 - 8642  
fax +39 049 8211802  
francesco.tona@unipd.it  
CF 80006480281  
P.IVA 00742430283

Francesco Tona, MD, PhD  
Dpt. of Cardiac, Thoracic and  
Vascular Sciences  
University of Padova  
Via Giustiniani 2  
35128, Padova  
Italy

July 14<sup>th</sup>, 2019

Dear Professor Arnold von Eckardstein,  
Universitätsspital Zürich, Zürich, Switzerland

Please find you in the attached file the revised version of our manuscript entitled: “**Long-term prognostic value of coronary flow reserve in psoriasis patients**”, which we would like to resubmit to *Atherosclerosis*.

We thank the Editor and reviewers for the potential interest in our work

We answered to all query of the reviewers.

We hope that our manuscript will be of interest and suitable to be published in such a prestigious scientific journal. This is an original research, it has not been previously published and has not been submitted for publication elsewhere while under your consideration.

All authors have read and approved the manuscript submission.

I guarantee that the authors do not have direct and indirect conflicts of interest which relate directly or indirectly to the subject of the work and nothing to disclose. I will be the corresponding author.

Looking forward to have a chance to hear from you soon, we remain

Sincerely yours

Prof. Francesco Tona, MD, PhD

Francesco Tona, MD, PhD  
Division of Cardiology  
Dept of Cardiac, Thoracic and Vascular Sciences  
University of Padova-Policlinico  
Via Giustiniani, 2  
35128 Padova, Italy  
Tel +3949 8211844; Fax: +3949 821 1802

**DIPARTIMENTO DI SCIENZE CARDIOLOGICHE,  
TORACICHE E VASCOLARI**  
CLINICA CARDIOLOGICA  
Direttore: Prof. Sabino ILICETO

◆ **UNIVERSITÀ DEGLI STUDI DI PADOVA**

E-mail: [francescotona@hotmail.com](mailto:francescotona@hotmail.com); [francesco.tona@unipd.it](mailto:francesco.tona@unipd.it)

**Conflicts of Interest – Atherosclerosis**

**Manuscript Title:** Long-term prognostic value of coronary flow reserve in psoriasis patients

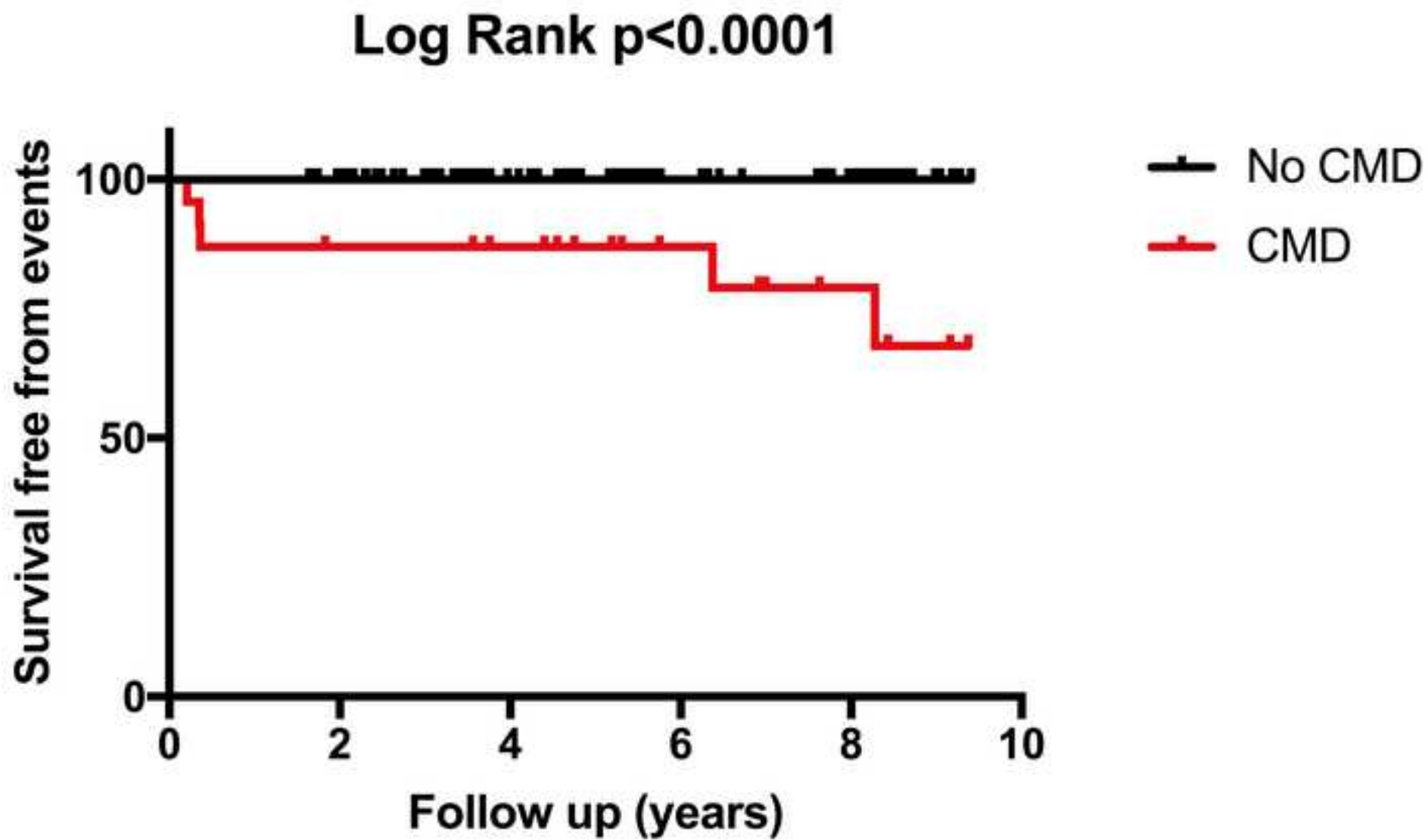
**List of all Authors:** Stefano Piaserico, MD, PhD; Elena Osto, MD, PhD; Giulia Famoso, MD, PhD; Roberta Montisci, MD; Laura De Michieli, MD; Irene Zanetti, MD; Sabino Iliceto, MD; Francesco Tona, MD, PhD

Corresponding Author: Francesco Tona

This statement is to certify that all authors have seen and approved the manuscript being submitted, have contributed significantly to the work, attest to the validity and legitimacy of the data and its interpretation, and agree to its submission to the Atherosclerosis. Also, all authors have no financial conflicts of interest.

On behalf of all Co-Authors, the corresponding Author shall bear full responsibility for the submission.

Figure 1  
[Click here to download high resolution image](#)



**Supplementary Material for online publication only**

[Click here to download Supplementary Material for online publication only: Supplemental\\_material.docx](#)

**Table 1. Clinical characteristics of the study population, stratified by presence or absence of coronary microvascular dysfunction (CMD; CFR $\leq$ 2.5)**

	All patients (n=153)	CMD present (CFR 2.0 $\pm$ 0.4, range 1.2-2.5; n=23)	CMD absent (CFR 3.3 $\pm$ 0.6, range 2.6-6.3; n=130)	p
Age, years	36 $\pm$ 8	40 $\pm$ 9	36 $\pm$ 7	0.03
Males, n (%)	122 (79.7)	20 (87)	102 (78.5)	0.5
PASI	15 [11-20]	18 [11-20]	13 [11-15]	0.02
time elapsing since psoriasis diagnosis, years	16 [10-22]	17 [10-26]	14 [9-21]	0.03
Presence of PsA, n (%)	50 (32.6)	11 (47.8)	39 (30)	0.03
BMI, Kg/m <sup>2</sup>	26.39 $\pm$ 4	25.76 $\pm$ 3.91	26.48 $\pm$ 4.01	0.4
Hypertension, n (%)	24 (15.8)	9 (39.1)	15 (11.6)	0.003
Family history of heart disease, n (%)	36 (23.5)	10 (43.4)	26 (20)	0.02
Current smoking, n (%)	52 (33.9)	8 (34.8)	44 (33.8)	0.6
Previous smoking, n (%)	43 (28.1)	5 (21.7)	38 (29.2)	0.7
SBP, mmHg	121 $\pm$ 14	124 $\pm$ 15	121 $\pm$ 14	0.5
DBP, mmHg	76 $\pm$ 11	75 $\pm$ 7	76 $\pm$ 12	0.6
Total cholesterol, mg/dL	194.74 $\pm$ 43.17	203.56 $\pm$ 42.43	193.31 $\pm$ 43.31	0.3
Triglycerides, mg/dL	110.53 $\pm$ 61.96	113.50 $\pm$ 80.61	110.05 $\pm$ 58.80	0.8
hsCRP, mg/L	2.39 $\pm$ 3.26	3.24 $\pm$ 1.81	2.31 $\pm$ 3.37	0.4

BMI, Body Mass Index; CFR, coronary flow reserve; CMD, coronary microvascular dysfunction; hsCRP, high sensitive-C reactive protein; PASI, Psoriasis Area Severity Index; PsA, psoriatic arthritis. DBP, diastolic blood pressure; SBP, systolic blood pressure. Data are presented as mean  $\pm$  SD



**Table 2: Factors independently associated with coronary microvascular dysfunction (CFR $\leq$ 2.5)**

	OR	95% CI	p
<b>Model 1: obtained by stepwise logistic regression (C-statistic = 0.80; R<sup>2</sup> = 0.62)</b>			
Age	1	0.9-1.1	0.6
Time elapsing since psoriasis diagnosis >6 years	2.02	1.4-5.4	0.03
Hypertension	4.4	1.4-13.4	0.007
<b>Model 2: obtained also including variables marginally significant (p<math>\leq</math>0.1) (C-statistic = 0.78; R<sup>2</sup> = 0.61)</b>			
Age	1	0.8-1.09	0.8
Time elapsing since psoriasis diagnosis >6 years	1.9	1.2-4.6	0.03
Hypertension	4.1	1.3-12.1	0.009
PASI>10	3.1	1.1-8.7	0.03
PsA	2.9	1.07-8.1	0.03
<b>Model 3: obtained forcing other variables (C-statistic = 0.87; R<sup>2</sup> = 0.70)</b>			
Age	1	0.8-1.06	0.7
Time elapsing since psoriasis diagnosis >6 years	1.7	1.2-3.8	0.03
Hypertension	3.6	1.2-9.1	0.02
PASI>10	1.8	1.3-6.2	0.04
PsA	1.8	1.04-6.1	0.07

CI indicates confidence interval; OR, odds ratio. The following variables were considered by the stepwise procedure but were not included in the final models because they did not meet the criteria to enter or to stay in the model: male gender, hsCRP. The following variables were forced into the model one at a time, but their inclusion did not significantly affect the relationship between coronary flow reserve  $\leq$ 2.5 and variables of model 1: current smoking, BMI, and total cholesterol.

**Table 3: Demographic and clinical characteristics of patients with events**

No.	Age/gender	Time from diagnosis (years)	Type of MI	Psoriasis treatment	Angiographic CAD	Revascularization Therapy	Time from CFR (months)	CFR
1	44/M	26	MINOCA*	Infliximab	none	/	5	2.3
2	38/M	7	Type 1 MI <sup>^</sup>	Acitretin	70% LAD	PTCA+DES	4	1.8
3	45/M	6	MINOCA*	Ustekinumab	none	/	77	2.0
4	53/M	39	Type 1 MI <sup>^</sup>	Etanercept	90% RCA	PTCA+DES	2	2.2
5	46/M	23	Type 1 MI <sup>^</sup>	Adalimumab	TCO Cx, 80% LAD, 70% PDA	CABG	100	2.3

CABG, coronary artery bypass graft surgery; DES, drug eluting stent; LAD, left anterior descending coronary artery; MI, myocardial infarction; MINOCA, myocardial infarction with non-obstructive coronary arteries; PDA, posterior descending coronary artery; PTCA, percutaneous transluminal coronary angioplasty; RCA, right coronary artery; TCO total coronary occlusion. Other abbreviations as in Table 1.

\*MINOCA: MI with no angiographic obstructive coronary artery disease ( $\geq 50\%$  diameter stenosis in a major epicardial vessel).

<sup>^</sup> Type 1 myocardial infarction: MI caused by atherothrombotic coronary artery disease and usually precipitated by atherosclerotic plaque disruption (rupture or erosion).

**Table 4. Clinical characteristics of patients with and without cardiovascular events**

	<b>MACE (n=5)</b>	<b>No MACE (n=148)</b>	<b>p</b>
Age, years	43±6	36±8	0.04
Males, n (%)	5 (100)	117 (79)	0.3
PASI	15 (7-31)	10 (3-15)	0.001
Time elapsing since psoriasis diagnosis, years	13 (4-25)	6 (3-11)	0.04
Presence of PsA, n (%)	2 (40)	48 (32)	0.4
BMI, m <sup>2</sup> /Kg	27±5	26±4	0.7
Hypertension, n (%)	4 (80)	21 (14)	0.002
Family history of heart disease, n (%)	0 (0)	36(24)	0.2
Current smoking, n (%)	0 (0)	54 (36)	0.1
Previous smoking, n (%)	0 (0)	50 (33)	0.1
SBP, mmHg	122±22	121±14	0.9
DBP, mmHg	77±12	76±11	0.8
Total cholesterol, mg/dL	200±18	194±43	0.8
Triglycerides, mg/dL	94±65	110±62	0.7
hsCRP, mg/L	2.1±0.2	2.4±0.7	0.1
hDFV, cm/s	57 (48-61)	70 (60-80)	0.03
CFR	2.1±0.2	3.1±0.7	0.001

hDFV, hyperemic diastolic flow velocity. Other abbreviations as in Table 1. Data are presented as mean ± SD or as median with first and third quartiles (Q1-Q3).

**Table 5. Univariable prediction of cardiovascular events by logistic regression analysis**

	<b>OR</b>	<b>95% CI</b>	<b>p</b>
Age, years	1.14	0.99-1.3	0.04
Males, n (%)	0.8	0.69-1.01	0.9
PASI	1.2	1.1-1.32	0.02
Time elapsing since psoriasis diagnosis, years	1.68	1.02-2.76	0.04
Presence of PsA, n (%)	3.13	1.91-19.6	0.2
BMI, m <sup>2</sup> /Kg	1.02	0.83-1.26	0.8
Hypertension, n (%)	24	2.6-34	0.005
Family history of heart disease, n (%)	1.26	0.13-11.7	0.8
Current smoking, n (%)	0.81	0.62-1.31	0.9
Previous smoking, n (%)	0.96	0.78-1.23	0.9
SBP, mmHg	1.0	0.93-1.07	0.9
DBP, mmHg	1.0	0.92-1.09	0.8
Total cholesterol, mg/dL	1.01	0.99-1.04	0.2
Triglycerides, mg/dL	1.0	0.98-1.02	0.8
hsCRP, mg/L	1.8	1.3-2.14	0.2
hDFV, cm/s	1.03	1.0-1.1	0.1
CFR	7.81	1.93-31.2	0.004

Abbreviations as in Table 1 and 4.

## Atherosclerosis style guide checklist

*Atherosclerosis* applies format guidelines to all accepted papers, with the aim of improving their readability.

**Manuscripts that do not conform to the format guidelines of the *Atherosclerosis* Journal will be returned to the authors for reformatting.**

Please find below a questionnaire to guide authors to comply with the formatting requirements for revised submissions. For more detailed information, visit [our website](#).

**Please note that when you answer “No” to a question, editing of your manuscript is required before submission to *Atherosclerosis*.**

### Manuscript structure and style

**Does your manuscript contain all the below essential elements, in this order?** **Yes**  
(please stick to the headers as indicated below)

- Title
- Authors, Affiliations, Contact Information
- Abstract in the *Atherosclerosis* format (*Background and aims, Methods, Results, Conclusions*)
- Introduction
- Materials and methods (or Patients and methods)
- Results
- Discussion
- Conflict of interest (mandatory)
- Financial support (if applicable)
- Author contributions (mandatory)
- Acknowledgements (if applicable)
- References
- Figures and Tables (with legends in the suitable style)

### Abstract style

**Is the Abstract structured in the below sections?** **Yes**

- *Background and aims*
- *Methods*
- *Results*
- *Conclusions*

### Figure and table legends

**Are figure and table legends formatted as described below?** **Yes**

Each figure and table legend should have a brief overarching title that describes the entire figure without citing specific panels, followed by a description of each panel, and all symbols used.

If a figure or table contains multiple panels, the letter describing each panel should be capitalized and surrounded by parenthesis: i.e. (A)(B)(C)(D).

Please make sure to apply the formatting requirements to figures and tables where necessary (e.g. style of *p* values, gene and protein nomenclature).

### Footnotes to tables

**Are footnotes to tables formatted as described below?** **Yes**

Footnotes to tables should be listed with superscript lowercase letters, beginning with “<sup>a</sup>.”  
Footnotes must not be listed with numbers or symbols.

### Abbreviations

**Are abbreviations defined when first used in the text?** **Yes**

Use of abbreviations should be kept at a minimum.

### Units

Are units expressed following the international system of units (SI)?

Yes

If other units are mentioned, please provide conversion factors into SI units.

### DNA and protein sequences

Are gene names italicized?

Yes

Gene names should be italicized; protein products of the loci are not italicized.

For murine models, the gene and protein names are lowercase except for the first letter.  
(e.g., gene: *Abcb4*; protein: Abcb4)

For humans, the whole gene name is capitalized.  
(e.g., gene: *ABCB4*; protein ABCB4)

### Mouse strains and cell lines

Are knock-out or transgenic mouse strains and cell lines italicized and the symbol superscripted? Yes

(e.g. *ob/ob* , *p53<sup>+/+</sup>* , *p53<sup>-/-</sup>*)

### p values

Are p values consistently formatted according to the below style throughout the manuscript (including figures and tables)?

Yes

$p < X$

$p > X$

$p = X$

### Language

Is your manuscript written in good English?

Yes

Please make sure that you consistently use either American or British English, but not a mixture of them.

Please make sure that words are written consistently in the same way throughout the manuscript.  
e.g. non-significant or nonsignificant  
e.g. down-regulation or downregulation

### Artwork

Have you submitted high-resolution versions of your original artwork?

Yes

Please make sure to use uniform lettering and sizing in your original artwork, including letters to indicate panels, consistently throughout all figures.