



Year: 2019

The impact of trisomy 21 on treatment modalities and outcome in adults with congenital heart disease in Switzerland

Johannes, Judith ; Greutmann, Matthias ; Tobler, Daniel ; Bouchardy, Judith ; Stambach, Dominik ; Wustmann, Kerstin ; Schwitz, Fabienne ; Schwerzmann, Markus

Abstract: Trisomy 21 (T21) is associated in 40-45% of cases with heart defects, most commonly shunt lesions. These defects, if not repaired, can lead to irreversible shunt-induced pulmonary hypertension (i.e. Eisenmenger syndrome [ES]). In ES patients, intracardiac repair is no longer possible, but selective pulmonary vasodilators may increase exercise capacity and improve prognosis. This study aimed to estimate the prevalence of cardiac defects and ES in adult T21 patients and to assess the impact of T21 on treatment modalities and outcome in ES patients. A questionnaire was sent to 6906 Swiss physicians inviting them to indicate the number of adults with T21 under their care (survey report). We also analyzed all adults with ES (with and without T21) included in the Swiss Adult Congenital HEart disease Registry (SACHER) and studied the impact of T21 on the use of selective pulmonary vasodilators and survival. In the survey, 348 physicians cared for 695 adult T21 patients. Overall, 24% of T21 survey patients were known to have a cardiac defect, one in four with a defect had developed ES and 13% of those with ES were on specific pulmonary vasodilators. In SACHER, ES was present in 2% of adults with congenital heart disease and selective pulmonary vasodilators were used in 68% of ES patients with T21. In SACHER, survival during follow-up was worse with higher nt-proBNP levels (hazard ratio [HR] = 1.15 per 1000 units, 95% confidence interval [CI] = 1.02-1.29) and lower left ventricular ejection fraction (HR = 1.07 per percent decrease, 95% CI = 1.01-1.13). Age at inclusion and T21 did not affect survival. The prevalence of cardiac defects in adults with T21 in Switzerland is half the prevalence in children. T21 is over-represented among adults with ES. Raised awareness of the therapeutic options for T21 patients with ES is warranted.

DOI: <https://doi.org/10.1177/2045894018811147>

Posted at the Zurich Open Repository and Archive, University of Zurich

ZORA URL: <https://doi.org/10.5167/uzh-184959>

Journal Article

Published Version



The following work is licensed under a Creative Commons: Attribution-NonCommercial 4.0 International (CC BY-NC 4.0) License.

Originally published at:

Johannes, Judith; Greutmann, Matthias; Tobler, Daniel; Bouchardy, Judith; Stambach, Dominik; Wustmann, Kerstin; Schwitz, Fabienne; Schwerzmann, Markus (2019). The impact of trisomy 21 on treatment

modalities and outcome in adults with congenital heart disease in Switzerland. *Pulmonary Circulation*,
9(1):2045894018811147.
DOI: <https://doi.org/10.1177/2045894018811147>

The impact of trisomy 21 on treatment modalities and outcome in adults with congenital heart disease in Switzerland

Judith Johannes¹, Matthias Greutmann², Daniel Tobler³, Judith Bouchardy^{4,5},
Dominik Stambach⁶, Kerstin Wustmann¹, Fabienne Schwitz¹ and Markus Schwerzmann¹ ;
on behalf of SACHER*

¹Center for Congenital Heart Disease, Inselspital, Bern University Hospital, University of Bern, Bern, Switzerland; ²University Heart Center, Department of Cardiology, University of Zurich, Zurich, Switzerland; ³Department of Cardiology, University Hospital Basel, University of Basel, Basel, Switzerland; ⁴Department of Cardiology and Cardiac Surgery, Centre Hospitalier Universitaire Vaudois (CHUV), Lausanne, Switzerland; ⁵Division of Cardiology, Hôpitaux Universitaires de Genève (HUG), Genève, Switzerland; ⁶Cardiology, Kantonsspital St. Gallen, St. Gallen, Switzerland

Abstract

Trisomy 21 (T21) is associated in 40–45% of cases with heart defects, most commonly shunt lesions. These defects, if not repaired, can lead to irreversible shunt-induced pulmonary hypertension (i.e. Eisenmenger syndrome [ES]). In ES patients, intracardiac repair is no longer possible, but selective pulmonary vasodilators may increase exercise capacity and improve prognosis. This study aimed to estimate the prevalence of cardiac defects and ES in adult T21 patients and to assess the impact of T21 on treatment modalities and outcome in ES patients. A questionnaire was sent to 6906 Swiss physicians inviting them to indicate the number of adults with T21 under their care (survey report). We also analyzed all adults with ES (with and without T21) included in the Swiss Adult Congenital HEart disease Registry (SACHER) and studied the impact of T21 on the use of selective pulmonary vasodilators and survival. In the survey, 348 physicians cared for 695 adult T21 patients. Overall, 24% of T21 survey patients were known to have a cardiac defect, one in four with a defect had developed ES and 13% of those with ES were on specific pulmonary vasodilators. In SACHER, ES was present in 2% of adults with congenital heart disease and selective pulmonary vasodilators were used in 68% of ES patients with T21. In SACHER, survival during follow-up was worse with higher nt-proBNP levels (hazard ratio [HR] = 1.15 per 1000 units, 95% confidence interval [CI] = 1.02–1.29) and lower left ventricular ejection fraction (HR = 1.07 per percent decrease, 95% CI = 1.01–1.13). Age at inclusion and T21 did not affect survival. The prevalence of cardiac defects in adults with T21 in Switzerland is half the prevalence in children. T21 is over-represented among adults with ES. Raised awareness of the therapeutic options for T21 patients with ES is warranted.

Keywords

trisomy 21, adult congenital heart disease, pulmonary arterial hypertension, Eisenmenger syndrome, selective pulmonary vasodilators, registry

Date received: 18 June 2018; accepted: 8 October 2018

Pulmonary Circulation 2018; 9(1) 1–8

DOI: 10.1177/2045894018811147

Trisomy 21 (T21) is the most common aneuploidy and affects one in 800–1000 live births.^{1,2} It is associated in 40–45% of cases with cardiovascular anomalies, most commonly an atrioventricular septal defect (40–45%), or a simple ventricular (30%) or atrial (15%) septal defect.³ Infant mortality in T21 has decreased substantially in the

Corresponding author:

Markus Schwerzmann, Center for Congenital Heart Disease, Inselspital, Bern University Hospital, University of Bern, Bern, Switzerland.

Email: markus.schwerzmann@med.unibe.ch



Creative Commons Non Commercial CC BY-NC: This article is distributed under the terms of the Creative Commons Attribution-NonCommercial 4.0 License (<http://www.creativecommons.org/licenses/by-nc/4.0/>) which permits non-commercial use, reproduction and distribution of the work without further permission provided the original work is attributed as specified on the SAGE and Open Access pages (<https://us.sagepub.com/en-us/nam/open-access-at-sage>).

© The Author(s) 2018.

Article reuse guidelines:
sagepub.com/journals-permissions
journals.sagepub.com/home/pul



past 50 years, partially due to the increasing use of cardiac surgery for repair of cardiovascular defects in early life.⁴ As an example, mortality for infants with T21 in Sweden in the first year of life was 40% in 1970 and 4% in 2000.⁵ At the same time, cardiac repair was offered to 39% of affected children with defects in 1973–1977 and to 97% in the years 1993–1997.⁶ In Switzerland, a similar evolution took place: defect repair was the exception before the 1970s and became clinical routine in the last two decades.

Some T21 children with cardiac defects and no repair in early life survived to adult age and developed severe, irreversible shunt-induced pulmonary arterial hypertension (PAH), i.e. Eisenmenger syndrome (ES).⁷ Intracardiac repair for shunt defects is no longer possible at this stage; therefore, families of adults with T21 and ES live with the perception that “nothing else can be done.” However, selective pulmonary vasodilators may increase exercise capacity and improve prognosis in ES patients, including those with T21.^{8,9}

In 2013, the working group for adults and teenagers with congenital heart disease of the Swiss Society of Cardiology performed a nationwide survey among general practitioners in Switzerland, inviting them to indicate the estimated number of adults with T21 under their care, and the proportion of such patients with known cardiac defects, with ES, and on treatment with selective pulmonary vasodilators. In a second step, we identified adults with ES included in the Swiss Adult Congenital HEart disease Registry (SACHER)¹⁰ followed at the University Hospitals Basel, Bern, or Zurich, and investigated their treatment modalities and outcome.

We hypothesized that treatment differences exist in ES patients with respect to selective pulmonary vasodilators, depending on whether they have T21 and whether they receive specialized care.

Methods

Trisomy 21 survey. In spring 2013, a letter with four questions (Table 1) was sent to members of the “Schweizerische Gesellschaft für Allgemeinmedizin (SGAM)” and of the “Schweizerische Gesellschaft für Innere Medizin (SGIM)”. The letter was in German, French, or Italian, depending on the recipient’s address. The mailing was organized and financed by the pharmaceutical company Actelion Pharma Schweiz (Baden, Switzerland). Physicians were asked to send their responses by mail or fax to the Grown-Up Congenital Heart (GUCH) disease unit of the Inselspital, Bern. Due to the anonymous nature of the data, no ethical approval was obtained for this questionnaire.

SACHER analysis. The SACHER is a nationwide registry that was established in Switzerland in spring 2013 and prospectively follows adults with congenital heart disease.¹⁰ Included are adults (aged >18 years) with structural congenital heart defects or Marfan syndrome. After informed consent was obtained, anonymized clinical data were

Table 1. Trisomy 21 questionnaire.

| | |
|------------|--|
| Question 1 | How many adult patients (aged > 18 years) with trisomy 21 are under your care? |
| Question 2 | How many of these patients are known to have a congenital cardiac defect? |
| Question 3 | How many of these patients have an Eisenmenger syndrome? (Eisenmenger syndrome is defined as irreversible pulmonary arterial hypertension due to the cardiac defect, accompanied by shunt reversal and chronic cyanosis.) |
| Question 4 | How many of your patients with trisomy 21 and Eisenmenger syndrome receive specific vasodilator therapies? Specific pulmonary vasodilators are drugs like bosentan (Tracleer [®]) or ambrisentan (Volibris [®]), sildenafil (Viagra [®] or Revatio [®]) or tadalafil (Adcirca [®]), or prostacyclins like iloprost (Ventavis [®] or Ilomedin [®]) or treprostinil (Remodulin [®]). |

entered in an online registry. The ethics review boards of all participating hospitals approved the registry and subsequent analysis of data. The SACHER contained a total of 3476 patients on 1 September 2017. We analyzed in detail data from 58 ES patients included at the GUCH units of the University Hospitals Basel, Bern, or Zurich. These three centers had included three of four SACHER patients (2552 of 3476) at that time and all centers have specialized programs for PAH on site. ES was defined as PAH with a non-restrictive intracardiac or extracardiac communication and chronic cyanosis due to shunt reversal.¹¹ The diagnosis has been established and confirmed in all cases by echocardiography. Cardiac catheterization was not mandatory.

Patients’ histories were assessed for the following parameters: baseline characteristics at the time of inclusion in the SACHER, survival status at 1 September 2017, defect anatomy and concomitant medication with a special focus on selective pulmonary vasodilators. Of note, no uniform criteria when to start selective pulmonary vasodilators were used in the participating centers. The decision was left to the treating physician. Nevertheless, all patients in New York Heart Association (NYHA) functional class (FC) III were offered specific drugs. Exercise capacity was assessed using the 6-min walking distance (6MWD) and the NYHA FC. Echo findings at the time of last follow-up were studied for the presence of right or left ventricular dysfunction, pericardial effusion, and the degree of tricuspid regurgitation. Any history of suspected or confirmed paradoxical embolism, hemoptysis, and sustained arrhythmia before or after inclusion in the SACHER was documented. Bloodwork including red blood count, renal function, thyroid function, and NT-proBNP at the time of inclusion was noted.

Continuous data are shown as mean with standard deviation or as median with the interquartile range (IQR), as appropriate. Comparison between baseline characteristics in ES patients with and without T21 were performed using

the unpaired Student's t-test for normally distributed continuous variables or with the Mann–Whitney U test for non-normally distributed data. Distribution of categorical data between groups was compared using the chi-square test. Survival analysis was performed for all-cause mortality. We calculated survival curves using the Kaplan–Meier method; survival differences in ES patients with and without T21 after inclusion in SACHER were compared using the log-rank test. In a Cox proportional hazards model, age at inclusion in SACHER, T21, and univariate significant predictors of survival were entered in a multivariate regression model. In all analyses, the null hypothesis was rejected for P values < 0.05 . All calculations were performed using STATA 12 statistical software.

Results

Trisomy 21 survey. A total of 6906 letters were sent out. After three months, 1097 responses were received (16% response rate). The response rate varied between 8% (region Appenzell Innerrhoden) and 32% (region Glarus), with no major differences between the different language regions and between urban or rural areas (Fig. 1). Of the responding physicians, 751 (68%) had no adult T21 patient under their care (Table 2). A total of 348 general practitioners cared for 695 adult T21 patients (median of one patient per physician; IQR = 1–2). Of these 695 patients, 165 (24%) were reported to have a cardiac defect. A total of 38 (23%) T21 patients (out of the 165 with a presumed

cardiac defect) were diagnosed as ES and five of them (13%) were on specific pulmonary vasodilator therapies: three patients were on Bosentan; one patient was on Sildenafil; and one patient was on dual therapy with Bosentan and Iloprost inhalation at the time of the last visit.

SACHER results. Of the 58 patients with ES from SACHER, 25 (43%) had T21, 34 (59%) of them were women, 31 (53%) were in NYHA FC II, and 26 (45%) were in NYHA FC III or IV. For one patient with ES, the NYHA FC at inclusion was not documented. This ES cohort represented 2% of all adults with congenital heart disease included in SACHER at these centers. The prevalence of T21 in all SACHER patients from Basel, Bern, and Zurich was 2% (50/2552), significantly

Table 2. Number of adult T21 patients under care.

| T21 patients under care (n) | Responders (n (%)) | Total T21 patients under care (n) |
|-----------------------------|--------------------|-----------------------------------|
| 0 | 751 (68) | 0 |
| 1–2 | 293 (27) | 371 |
| 3–4 | 29 (3) | 97 |
| 5–6 | 14 (1) | 73 |
| 7–12 | 9 (1) | 85 |
| 13–30 | 3 (<1) | 69 |
| | 1099 responders | 695 patients |

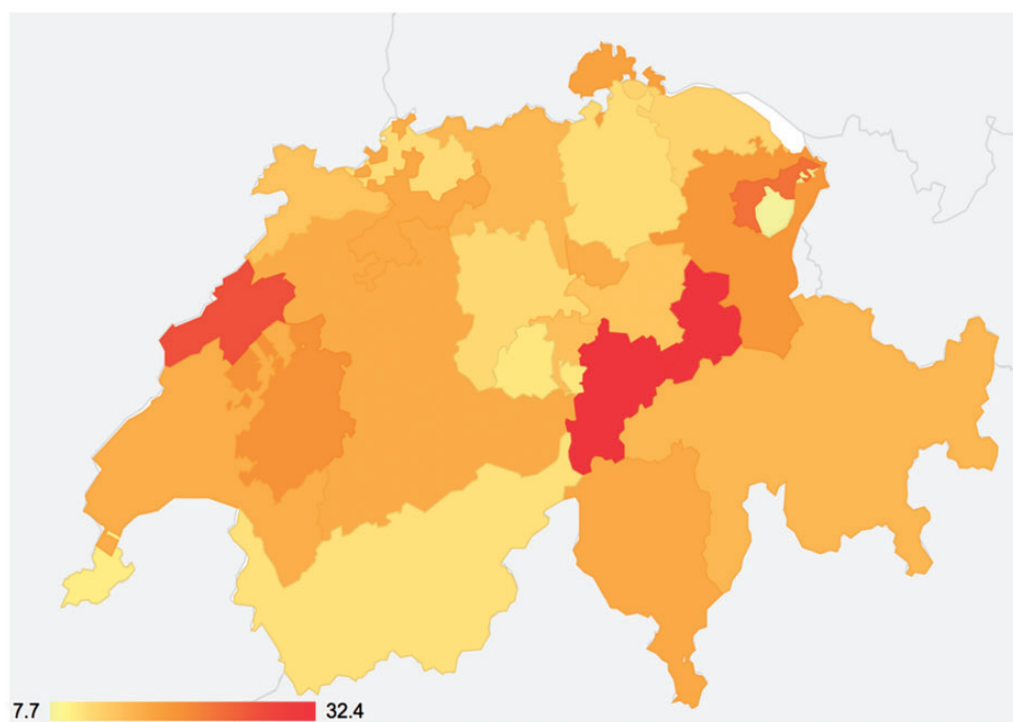


Fig. 1. Average response rate (in percent) to the T21 survey for different regions within Switzerland. The response rate was comparable in the Italian, French, and German speaking parts of the country.

lower than the T21 prevalence found in the SACHER patients with ES (25/58, 43%; $P < 0.001$). The mean age of ES patients at the time of last follow-up or death was 39.8 ± 13.0 years (age range = 17–67 years) (Table 3).

The most common heart defect in SACHER ES patients was a ventricular septal defect (21 patients, 36%); the second most common heart defect was an atrioventricular septal defect (19 patients, 33%) (Table 4). As expected, there was a difference in heart defect anatomy between ES patients with and without T21; ES patients with T21 were more likely to have an atrioventricular septal defect than non-trisomy patients (70% vs. 9%, $P < 0.001$).

A total of 45 SACHER ES patients (78%) were on selective pulmonary vasodilators: 23 patients were on single therapy; 18 on dual therapy; and four on triple therapy. The most commonly used vasodilators were endothelin-receptor antagonists (bosentan or macitentan, no patients were on ambrisentan) in 44 patients, followed by phosphodiesterase-5 (PDE5) inhibitors (sildenafil or tadalafil) in 26 patients. A total of five patients were put on riociguat; four of them were previously on sildenafil or tadalafil. Prostacyclins or their analogs were used in seven patients (six were on inhalation iloprost, one was switched to selexipag, and another patient was newly started on selexipag). The mean age when patients were started on pulmonary vasodilators was 33.8 ± 13.0 years and the mean duration of drug therapy was 81.8 ± 51.0 months. In SACHER, the presence of T21 had no effect on the proportion of patients

on selective pulmonary vasodilators, nor on the age when this therapy was started (Table 3). ES patients without T21 were, however, more often on combination therapy or on one of the newly developed pulmonary vasodilators, i.e. macitentan, riociguat, or selexipag. The proportion of T21 patients with ES treated with selective pulmonary

Table 4. Anatomy of cardiac defects of Eisenmenger patients in SACHER.

| Anatomy | n |
|--|----|
| Ventricular septal defect | 20 |
| Complete atrioventricular septal defect | 15 |
| Functionally univentricular heart with unprotected pulmonary circulation | 6 |
| Atrial septal defect, secundum type | 5 |
| Patent ductus arteriosus | 3 |
| Atrial septal defect and ventricular septal defect | 2 |
| Aortopulmonary window | 2 |
| Residual defect after ventricular septal defect closure | 1 |
| Atrial septal defect, primum type | 1 |
| Double outlet right ventricle | 1 |
| Common arterial trunc | 1 |
| Transposition of the great arteries and ventricular septal defect | 1 |

Table 3. Characteristics of T21 vs. non-T21 patients in SACHER.

| | T21 | No T21 | P value |
|--|-----------------|-----------------|---------|
| n | 25 | 33 | |
| Age at last visit (years) | 33.6 ± 7.5 | 44.5 ± 13.5 | 0.011 |
| Body mass index (kg/m ²) | 24.8 ± 5.2 | 22.9 ± 4.3 | 0.122 |
| Selective pulmonary vasodilators (n (%)) | 17 (68) | 28 (85) | 0.128 |
| Combination therapy (n (%)) | 5 (20) | 17 (52) | 0.014 |
| Newly developed drugs* (n (%)) | 6 (24) | 18 (55) | 0.019 |
| Age at start of selective pulmonary vasodilators (years) | 30.0 ± 9.6 | 36.2 ± 14.4 | 0.138 |
| Duration of pulmonary vasodilator use (months) | 58.5 ± 38.6 | 96.7 ± 53.3 | 0.017 |
| Resting oxygen saturation (%) | 82.7 ± 6.7 | 86.3 ± 7.0 | 0.064 |
| 6MWD (m) | 298 ± 77 | 420 ± 125 | 0.001 |
| Tricuspid annular motion (mm) | 19.1 ± 4.5 | 17.0 ± 4.5 | 0.112 |
| Right ventricular dysfunction (n (%)) | 2 (8) | 17/32 (53) | >0.001 |
| Pericardial effusion (n (%)) | 11 (44) | 4 (12) | 0.006 |
| LVEF (%) | 62 ± 8 | 54 ± 11 | 0.005 |
| Nt-proBNP (pg/mL) | 457 (249–1380) | 526 (275–1770) | 0.847 |
| Hemoglobin (g/L) | 201 ± 28 | 175 ± 34 | 0.003 |
| Hematocrit (%) | 60 ± 8 | 52 ± 12 | 0.004 |
| Thyroid dysfunction (n (%)) | 16 (64) | 7 (21) | 0.001 |

Values are presented as mean \pm SD or as median and interquartile range unless otherwise indicated.

*Newly developed drugs: Macitentan (Opsumit[®]), Riociguat (Adempas[®]), Selexipag (Upravi[®]).

LVEF, left ventricular ejection fraction.

vasodilators was significantly higher in SACHER compared to the T21 population reported in the nationwide survey (17/25 vs. 5/38, $P=0.011$).

Eleven patients (19%) had a history of presumed or documented paradoxical embolism and 13 (22%) had sustained atrial arrhythmias. The CHA₂DS₂-VASc score did not differ between patients with and without T21 (mean = 1.8 ± 0.8) but was significantly higher in patients with a history of presumed paradoxical embolism (2.7 ± 0.6) compared to patients without such an event (1.7 ± 0.7 ; $P=0.001$). None of the 11 patients with an event had a score < 2. A total of 20 ES patients (35%) had bleeding complications, most of the time hemoptysis (14 patients) or gastrointestinal bleeding (three patients). There was no difference in bleeding events between patients with and without T21. The HAS-Bled score was significantly higher in patients with a bleeding history (2.0 ± 1.0 vs. 0.7 ± 0.9 ; $P < 0.001$). None of the 20 (35%) ES patients with a HAS-Bled score 0 suffered bleeding complications.

Overall, disease-related morbidity consisting of arrhythmias, paradoxical embolism, or bleeding was observed in 33 (57%) patients. In a logistic regression model, disease-related morbidity was only related to age (per 10 years of age: odds ratio [OR] = 2.2, 95% confidence interval [CI] = 1.2–4.1), but not to T21 nor defect complexity.

A total of 10 (18%) ES patients died at a mean age of 34.1 ± 10.1 years during the follow-up period after inclusion in SACHER. There was no difference with respect to gender, defect anatomy, the proportion of patients treated with selective pulmonary vasodilators, supplemental oxygen therapy, 6MWD, resting oxygen saturation, hemoglobin or

hematocrit, thyroid dysfunction, paradoxical embolism, bleeding history, or arrhythmias between survivors and non-survivors. However, echocardiography showed more often right ventricular dysfunction and lower left ventricular ejection fraction (LVEF) in non-survivors compared to survivors, and also the NT-proBNP differed significantly (Table 5). In a Cox regression analysis corrected for age, with T21, nt-proBNP levels and LVEF as predictors of death during follow-up, only higher nt-proBNP levels (hazard ratio [HR] = 1.15 per 1000 units, 95% CI = 1.02–1.29) and lower ejection fraction (HR = 1.07 per percent decrease, 95% CI = 1.01–1.13) were independent predictors of outcome. In a Kaplan–Meier survival analysis, there was again no survival difference in ES patients with and without T21 (Fig. 4, $P=0.553$).

Discussion

The reported prevalence of cardiac defects in Swiss adult T21 patients in our survey is half of the documented prevalence in contemporary children with T21.³ In addition, T21 patients are over-represented in SACHER among patients with ES. If T21 ES patients are followed in specialized clinics, they are as likely as the non-trisomy patients to receive selective pulmonary vasodilators and the survival rates are comparable between these two groups of ES patients. In the SACHER ES cohort, survival during follow-up was mainly dependent on cardiac function, i.e. the degree of neurohormonal activation and particularly of LVEF.

Based on these observations one may conclude that 30–40 years ago, as in other countries, children born in

Table 5. Clinical characteristics of ES survivors vs. non-survivors in SACHER.

| | ES survivor | ES non-survivor | P value |
|---------------------------------------|-----------------|-----------------|---------|
| n | 48 | 10 | |
| Age at inclusion (years) | 37.2 ± 13.2 | 32.9 ± 9.7 | 0.333 |
| Body mass index (kg/m ²) | 24.1 ± 4.8 | 21.9 ± 4.2 | 0.164 |
| Trisomy 21 (n (%)) | 23 (48) | 2 (20) | 0.166 |
| Selective pulmonary vasodilators | 37 (77) | 8 (80) | 0.604 |
| Resting oxygen saturation (%) | 85.4 ± 6.4 | 82.1 ± 7.2 | 0.184 |
| 6 minutes walking distance (m) | 384 ± 123 | 330 ± 130 | 0.264 |
| Tricuspid annular motion (mm) | 18.5 ± 4.6 | 15.9 ± 4.1 | 0.113 |
| Right ventricular dysfunction (n (%)) | 13/47 (27) | 6 (60) | >0.049 |
| Pericardial effusion (n (%)) | 14 (29) | 1 (10) | 0.427 |
| LVEF (%) | 59 ± 9 | 49 ± 14 | 0.006 |
| Nt-proBNP (pg/mL) | 453 (249–2819) | 2928 (478–4437) | 0.043 |
| Hemoglobin (g/L) | 184 ± 41 | 183 ± 40 | 0.923 |
| Thyroid dysfunction (n (%)) | 19 (39) | 4 (40) | 0.938 |
| Embolic event (n (%)) | 9 (19) | 2 (20) | 0.927 |
| History of arrhythmias (n (%)) | 11 (23) | 2 (20) | 0.634 |
| Bleeding history (n (%)) | 17 (35) | 3 (30) | 0.743 |

Values are presented as mean \pm SD or as median and interquartile range unless otherwise indicated.

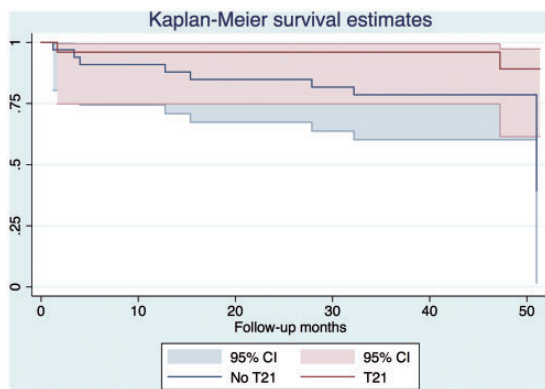


Fig. 2. Survival in Eisenmenger patients with and without T21 with the corresponding CIs, after inclusion in SACHER. The timeline denotes follow-up duration in months.

Switzerland with T21 and a cardiac defect were less likely to undergo cardiac surgery than children without T21, and therefore faced increased childhood mortality and morbidity. Another reason for the low prevalence of reported congenital heart disease in contemporary adults with T21 is the possibility of under-diagnosis of such defects. Currently, children born with T21 undergo routine echocardiography after birth, even in the absence of a heart murmur.¹⁴ Many adult T21 patients may not have undergone an echocardiography in their childhood. Therefore, cardiac defects with minor clinical findings and a paucity of symptoms in the first decades of life may yet not have been diagnosed. In a recent Dutch study of 1158 adults with T21 living in residential centers, the prevalence of cardiac defects documented in the chart records was 16%, even lower than the reported number of 23% in our survey.¹⁶ After performing an echocardiography in 138 adults without any known defect, 24 new cardiac lesions were detected. The majority of cardiac defects were valvular lesions, but EIGHT patients (7%) had shunt lesions (secundum atrial or partial atrioventricular septal defects, patent ductus arteriosus), requiring further evaluation and treatment. Taking these undiagnosed defects into account, the prevalence of cardiac defects in the Dutch study of adults with T21 rose by 40%. No such study has yet been performed in Switzerland, but it is also likely that Swiss adults with Down's syndrome have unrecognized congenital heart defects. One might consider a routine echocardiography in adult T21 patients with no previous cardiac evaluation, as offered to newborn children with Down's syndrome.

In patients with advanced pulmonary vasculopathy, selective pulmonary vasodilator therapies are recommended in pediatric and adult PAH guidelines,^{19,20} including combination therapies. None of the guidelines deny such treatment to T21 patients. In a recent multicenter study investigating the outcome of >1000 ES patients from Europe and North America, two-third of patients were on selective pulmonary vasodilator therapies at the end of

follow-up.¹¹ In this large survey, 30% of all ES patients had T21. A similar prevalence of T21 among ES patients was also observed in Germany (33%).²¹ In the German National Register for congenital heart defects, 58% of patients with ES were treated with selective pulmonary vasodilators and their use was independently associated with better survival (HR=0.44, 95% CI=0.19–0.96). Treatment-naïve ES patients faced a 60–70% mortality at 10 years of follow-up. Similar to our study, there was no difference in survival observed between ES with and without T21.

Our study highlights the morbidity encountered in ES patients: paradoxical embolism; arrhythmias; or bleeding complications due to hemoptysis occurred in more than half of all ES patients. As in other GUCH patients, also in the SACHER ES patients with arrhythmias, the CHA₂DS₂-VASc score was not predictive of stroke events.^{22,23} However, the HAS-Bled score allowed to define a subgroup of patients with low bleeding risks, i.e. the ones with a score of 0. These findings need to be confirmed in a larger study cohort before they can be used to guide our decision on anticoagulation strategies in ES patients. In many ES patients, we face the dilemma of significant disease-related morbidity and mortality and missing evidence-based treatment pathways. Management based on expert opinions may be all we can offer to improve outcome. Therefore, referral of such complex patients to specialized GUCH centers is recommended.

Our study has several limitations. In the nationwide survey, the response rate was only 16%. We cannot exclude an important bias; physicians without adult T21 patients under their care may have had less interest to respond. In addition, some patients may have been reported twice by different practitioners. We could also not verify if they diagnostic criteria for ES were correctly applied in the survey patients. Assuming that the responding physicians are representative for the whole country, 4000–4500 adult T21 patients are expected to live in Switzerland, yielding a prevalence of 5–5.5/10,000 inhabitants. As comparison, a prevalence study in 2011 from England and Wales estimated 26,600 adult T21 patients among 56 million inhabitants, resulting in a prevalence of 4.8/10,000 inhabitants.²⁴ Our extrapolated prevalence is therefore comparable with other reports from Europe, supporting the credibility of our findings. Another limitation of this study is the small number of ES patients included in SACHER. Analyzing multiple predictors of outcome was only possible with statistical limitations. It is, however, reassuring to see that most of our observations are in line with reports from larger multicenter registries. It is likely that some of the reported T21 patients with heart defects in this survey were also included in SACHER. Due to the anonymous nature of the survey, no cross-linking was possible.

In conclusion, the prevalence of congenital heart disease in adult patients with T21 living in Switzerland is half the

expected prevalence. In the past, these patients were under-treated or not timely diagnosed with congenital heart disease. As a consequence, adults with T21 and unrepaired congenital heart disease patients face increased morbidity and mortality. Raised awareness of potentially undiagnosed congenital defects in such patients and of the therapeutic options for T21 patients with ES is warranted.

Conflict of interest

The author(s) declare that there is no conflict of interest.

Funding

The mailing of the questionnaire to members of the “Schweizerische Gesellschaft für Allgemeinmedizin (SGAM)” and of the “Schweizerische Gesellschaft für Innere Medizin (SGIM)” was organized and financed by the pharmaceutical company Actelion Pharma Schweiz (Baden, Switzerland). Actelion Pharma Schweiz was at no time involved in the design and analysis of this study, nor in the drafting of this article. They had no access to the data.

ORCID iD

Markus Schwerzmann  <http://orcid.org/0000-0002-4006-8929>

References

- Driscoll DA and Gross S. Clinical practice. Prenatal screening for aneuploidy. *N Engl J Med* 2009; 360: 2556–2562.
- Jensen KM and Bulova PD. Managing the care of adults with Down’s syndrome. *BMJ* 2014; 349: g5596.
- Irving CA and Chaudhari MP. Cardiovascular abnormalities in Down’s syndrome: spectrum, management and survival over 22 years. *Arch Dis Child* 2012; 97: 326–330.
- Yang Q, Rasmussen SA and Friedman JM. Mortality associated with Down’s syndrome in the USA from 1983 to 1997: a population-based study. *Lancet* 2002; 359: 1019–1025.
- Englund A, Jonsson B, Zander CS, et al. Changes in mortality and causes of death in the Swedish Down syndrome population. *Am J Med Genet A* 2013; 161: 642–649.
- Champagne CR, Lewis M and Gilchrist DM. Should we mend their broken hearts? The history of cardiac repairs in children with Down syndrome. *Pediatrics* 2014; 134: 1048–1050.
- Wood P. The Eisenmenger syndrome - or pulmonary hypertension with reversed central shunt. *BMJ* 1958; 2: 755–762.
- Galie N, Beghetti M, Gatzoulis MA, et al. Bosentan therapy in patients with Eisenmenger syndrome: a multicenter, double-blind, randomized, placebo-controlled study. *Circulation* 2006; 114: 48–54.
- Hjortshoj CMS, Kempny A, Jensen AS, et al. Past and current cause-specific mortality in Eisenmenger syndrome. *Eur Heart J* 2017; 38: 2060–2067.
- Tobler D, Schwerzmann M, Bouchardy J, et al. Swiss Adult Congenital HEart disease Registry (SACHER)-rationale, design and first results. *Swiss Med Wkly* 2017; 147: w14519.
- Kempny A, Hjortshoj CS, Gu H, et al. Predictors of death in contemporary adult patients with Eisenmenger syndrome: a multicenter study. *Circulation* 2017; 135: 1432–1440.
- Lip GY, Nieuwlaat R, Pisters R, et al. Refining clinical risk stratification for predicting stroke and thromboembolism in atrial fibrillation using a novel risk factor-based approach: the euro heart survey on atrial fibrillation. *Chest* 2010; 137: 263–272.
- Pisters R, Lane DA, Nieuwlaat R, et al. A novel user-friendly score (HAS-BLED) to assess 1-year risk of major bleeding in patients with atrial fibrillation: the Euro Heart Survey. *Chest* 2010; 138: 1093–1100.
- American Academy of Pediatrics Committee on Genetics. American Academy of Pediatrics: Health supervision for children with Down syndrome. *Pediatrics* 2001; 107: 442–449.
- Webb G and Gatzoulis MA. Atrial septal defects in the adult: recent progress and overview. *Circulation* 2006; 114: 1645–1653.
- Vis JC, de Bruin-Bon RH, Bouma BJ, et al. Congenital heart defects are under-recognised in adult patients with Down’s syndrome. *Heart* 2010; 96: 1480–1484.
- Lange R, Guenther T, Busch R, et al. The presence of Down syndrome is not a risk factor in complete atrioventricular septal defect repair. *J Thorac Cardiovasc Surg* 2007; 134: 304–310.
- Formigari R, Di Donato RM, Gargiulo G, et al. Better surgical prognosis for patients with complete atrioventricular septal defect and Down’s syndrome. *Ann Thorac Surg* 2004; 78: 666–672; discussion 672.
- Kozlik-Feldmann R, Hansmann G, Bonnet D, et al. Pulmonary hypertension in children with congenital heart disease (PAH-CHD, PPHVD-CHD). Expert consensus statement on the diagnosis and treatment of paediatric pulmonary hypertension. The European Paediatric Pulmonary Vascular Disease Network, endorsed by ISHLT and DGPK. *Heart* 2016; 102(Suppl 2): ii42–ii48.
- Galie N, Humbert M, Vachiery JL, et al. 2015 ESC/ERS Guidelines for the diagnosis and treatment of pulmonary hypertension: The Joint Task Force for the Diagnosis and Treatment of Pulmonary Hypertension of the European Society of Cardiology (ESC) and the European Respiratory Society (ERS); Endorsed by: Association for European Paediatric and Congenital Cardiology (AEPC), International Society for Heart and Lung Transplantation (ISHLT). *Eur Heart J* 2016; 37: 67–119.
- Diller GP, Korten MA, Bauer UM, et al. Current therapy and outcome of Eisenmenger syndrome: data of the German National Register for congenital heart defects. *Eur Heart J* 2016; 37: 1449–1455.
- Jensen AS, Idorn L, Norager B, et al. Anticoagulation in adults with congenital heart disease: The who, the when and the how? *Heart* 2015; 101: 424–429.
- Khairy P, Van Hare GF, Balaji S, et al. PACES/HRS Expert Consensus Statement on the Recognition and Management of Arrhythmias in Adult Congenital Heart Disease: developed in partnership between the Pediatric and Congenital Electrophysiology Society (PACES) and the Heart Rhythm Society (HRS). Endorsed by the governing bodies of PACES, HRS, the American College of Cardiology (ACC), the American Heart Association (AHA), the European Heart Rhythm Association (EHRA), the Canadian Heart Rhythm Society (CHRS), and the International Society for Adult Congenital Heart Disease (ISACHD). *Heart Rhythm* 2014; 11: e102–165.
- Wu J and Morris JK. The population prevalence of Down’s syndrome in England and Wales in 2011. *Eur J Hum Genet* 2013; 21: 1016–1019.

Appendix

Contributors to SACHER (mentioned as “on behalf of SACHER”)

University Hospital Basel: Daniel Tobler, Kerstin Buetler, Lukas Notz; University Hospital Inselspital Bern: Markus Schwerzmann, Fabienne Schwitz, Kerstin Wustmann, Corina Thomet; University Hospital Geneva: Judith Bouchardy, Corelie Blanche; University Hospital

Lausanne: Judith Bouchardy, Tobias Rutz; Kantonsspital St. Gallen: Reto Engel, Dominik Stambach, Niklas Ehl; University Hospital Zurich: Matthias Greutmann, Francesca Bonassin, Angela Oxenius, Christine Attenhofer Jost, Theresa Seeliger, Bruno Santos Lopes; Kantonsspital Luzern: Hans Peter Kuen, Christoph Auf der Maur; Klinik im Park, Zürich: Christine Attenhofer Jost, Jolanda Vögele; University Hospital Vienna: Harald Gabriel, Christine Groiss.