



**University of  
Zurich**<sup>UZH</sup>

**Zurich Open Repository and  
Archive**

University of Zurich  
University Library  
Strickhofstrasse 39  
CH-8057 Zurich  
[www.zora.uzh.ch](http://www.zora.uzh.ch)

---

Year: 2010

---

## **Complex stapes motions in human ears**

Sim, J H ; Chatzimichalis, M ; Lauxmann, M ; Rösli, C ; Eiber, A ; Huber, A M

DOI: <https://doi.org/10.1007/s10162-010-0207-6>

Posted at the Zurich Open Repository and Archive, University of Zurich

ZORA URL: <https://doi.org/10.5167/uzh-33639>

Journal Article

Published Version

Originally published at:

Sim, J H; Chatzimichalis, M; Lauxmann, M; Rösli, C; Eiber, A; Huber, A M (2010). Complex stapes motions in human ears. *Journal of the Association for Research in Otolaryngology*, 11(3):329-341.

DOI: <https://doi.org/10.1007/s10162-010-0207-6>

## Complex Stapes Motions in Human Ears

JAE HOON SIM,<sup>1</sup> MICHAEL CHATZIMICHALIS,<sup>1</sup> MICHAEL LAUXMANN,<sup>2</sup> CHRISTOF RÖÖSLI,<sup>1</sup> ALBRECHT EIBER,<sup>2</sup>  
AND ALEXANDER M. HUBER<sup>1</sup>

<sup>1</sup>University Hospital Zurich, Zurich, Switzerland

<sup>2</sup>University of Stuttgart, Stuttgart, Germany

Received: 28 November 2008; Accepted: 10 January 2010; Online publication: 18 February 2010

### ABSTRACT

It has been reported that the physiological motion of the stapes in human and several animals in response to acoustic stimulation is mainly piston-like at low frequencies. At higher frequencies, the pattern includes rocking motions around the long and short axes of the footplate in human and animal ears. Measurements of such extended stapes motions are highly sensitive to the exact angulation of the stapes in relation to the measurement devices and to measurement errors. In this study, velocity in a specific direction was measured at multiple points on the footplates of human temporal bones using a Scanning Laser Doppler Vibrometer (SLDV) system, and the elementary components of the stapes motions, which were the piston-like motion and the rocking motions about the short and long axes of the footplate, were calculated from the measurements. The angular position of a laser beam with respect to the stapes and coordinates of the measurement points on the footplate plane were calculated by correlation between the SLDV measurement frame and the footplate-fixed frame, which was obtained from micro-CT images. The ratios of the rocking motions relative to the piston-like motion increased with frequency and reached a maximum around 7 kHz.

A novel method for quantitatively assessing measurements of complex stapes motions and error boundaries of the motion components is presented. In the frequency range of 0.5 to 8 kHz, the magnitudes of the piston-like and two rocking motions were larger than estimated values of the corresponding upper error bounds.

*Correspondence to:* Jae Hoon Sim · University Hospital Zurich · Zurich, Switzerland. email: JaeHoon.Sim@usz.ch

**Keywords:** stapes, piston-like motion, rocking motion, Laser Doppler Vibrometer (LDV), micro-CT

### INTRODUCTION

Békésy (1960) and Kirikae (1960) described motions of the stapes footplate in human ears as a combination of translational motions along the longitudinal axis of the stapes (piston-like motions) and rotational motions (rocking motions). It has been reported that the human stapes motions are piston-like at low frequencies and include rocking motions along the long and short axes of the footplate at high frequencies (Heiland et al. 1999; Huber et al. 2001; Hato et al. 2003). Studies of rocking motions have been extended to other animals such as cat (Decraemer et al. 2000) and gerbil (Decraemer et al. 2007; Ravicz et al. 2008). Most of the current human cochlear models do not represent the effects of the rocking motions because these motions are believed to produce no net volume displacement on the oval window and have negligible effects on hearing mechanisms (Kolston and Ashmore 1996; Dodson 2001; Lim and Steele 2002). On the measurement side, a previous study by de la Rochefoucauld et al. (2008) reported that motion components other than the piston-like motion did not produce scala-vestibuli pressure in gerbil ears. However, a recent study by Huber et al. (2008) showed that enhancement of the rocking motions of the stapes by mechanical stimulation affected the cochlear response in guinea pigs, as demonstrated by changes in compound action potentials (CAP). It is anticipated that there will be further investigation of the relation between the rocking motions and fluid-flux inside the cochlea, and methods to measure stapes motions,

particularly the rocking motions, need to be systemically studied.

Laser Doppler Vibrometer (LDV) systems have been widely used to measure stapes motions, and several methods to measure all or a subset of the 3-D motion components of the stapes have been developed using the LDV system. Hato et al. (2003) measured velocities at five points on the footplate and calculated the piston-like and two rocking motions of the stapes. Eiber et al. (2007) also calculated the piston-like and two rocking motions from 3-D velocity components at a point on the stapes head measured using a 3-D LDV system. In their measurements and resulting calculations, the position and direction of the stapes in the measurement frame were estimated, and location of the measurement points on the stapes and the relative angular position of the laser beam with respect to the stapes were obtained based on the estimation. Inaccuracy in such estimations can cause significant errors in the calculated motion components, especially on small-sized stapes such as that of guinea pigs. In a study by Decraemer et al. (2007), 3-D components of motions at multiple points on the stapes were measured by changing the angular position of the laser beam using goniometers, and six rigid body motion components of the stapes in gerbil ears were calculated. In that study, coordinates of the observation points were read from the xyz-positioning system. A computed tomography (CT) model of the stapes was registered in the position of the stapes during the experiment using these coordinates to fully describe the experimental geometry. However, complicated setups with the goniometers were required for this accurate assessment of the angular position of the laser beam with respect to the stapes.

In our study, velocities at multiple points on the stapes footplate were measured using SLDV. The piston-like and two rocking motions of the stapes were calculated as a response to physiological sound stimuli for six human ears. An accurate way to relate the SLDV measurement frame to the footplate-fixed frame and thus determine coordinates of measurement points and the laser beam direction in the footplate-fixed frame was introduced using micro-CT technology.

Detailed investigation of the quantitative assessment of the effects of measurement errors on the rigid body motion components of the stapes was another goal of this study. In the work by Hato et al. (2003), reverse calculation of velocities at the measurement points from identified rigid body motion components was used to verify consistency of measurement and calculation of the overall stapes motions. However, if contribution of a specific rigid body motion component to the entire stapes motion is relatively small, then good agreement between the

original measurement and the reverse calculation does not guarantee accuracy of the rigid body motion component. In this study, the error boundaries of the motion components were examined and compared with the components of the stapes motions obtained from the measurements.

## MATERIAL AND METHODS

### Specimen preparation

Six temporal bones (TBs) from the right side of human cadavers (an average age of approximately 60 years) were used in this study. The human TBs were harvested within 24 h after death and were placed in 0.1% Cialit (sodium-2-ethylmercurimer-capto-benzoxazol-5-carbonide) solution, at 4°C. The TBs were inspected using an operating microscope for possible abnormalities. All experiments were performed within 7 days of the explantation. After removal of all connective tissues and muscles, the external ear canal was drilled down to 2 mm from the tympanic annulus. A simple mastoidectomy with posterior tympanotomy, which included removal of the mastoid and a part of the tympanic segment of the facial nerve and surrounding bone, was performed in order to obtain a clear and near-perpendicular view of the stapes footplate. The tympanic membrane (TM), ossicles, stapedius muscle, and tendon were left intact. All temporal bones were periodically moistened with physiological saline solution to prevent drying during preparation.

### Velocity measurement

The loudspeaker (*ER-2*, Etymotic Research, USA) and the microphone probe (*ER-7C*, Etymotic Research, USA) were placed in an artificial external ear canal near the TM. The artificial external ear canal (AEEC) was attached and sealed acoustically using silicone and bony wax to the bony rim of the former external ear canal, creating an acoustic chamber of about 0.5 ml volume. The distance between the microphone probe and the TM center was maintained at approximately 3 mm.

A multi-frequency sound consisting of harmonic sound waves with 32 different frequencies in the range of 0.5 to 8 kHz was generated by a function generator (HP 33120A, Hewlett Packard, USA) and delivered via the loudspeaker. The frequency steps in the multi-frequency sound were 100 Hz from 0.5 to 2 kHz, 200 Hz from 2 to 3 kHz, 300 or 400 Hz from 3 to 4 kHz, and 500 Hz from 4 to 8 kHz. The sound pressure level (SPL) in the ear canal was measured by the microphone probe in front of the TM, and amplitude of stimulation at each frequency was adjusted by HLV 1.01 software (Polytec GmbH, Germany), such that the SPL had a flat spectrum

within 5 dB along the measured frequency range. The final SPL with adjusted amplitudes was in the range of 94 to 105 dB. The magnitude and phase of the velocities at multiple points (150 to 200 points) on the footplate were measured using an *OFV-3001* SLDV system (Polytec GmbH, Germany), and the  $X$  and  $Y$  coordinates of the measurement points in the SLDV measurement frame were recorded by *PSV V8.5* software (Polytec GmbH, Germany). A sampling frequency of 25.6 kHz was chosen to prevent aliasing, and the frequency resolution was set at 12.5 Hz.

### Frame registration

The  $XYZ$  coordinate system of the SLDV measurement frame was set such that the laser beam was along the  $Z$  direction and the  $XY$  plane was normal to the laser beam, while the  $xyz$  coordinate system of the footplate-fixed frame was determined such that the  $xy$  plane was best fit to the lateral-side surface of the footplate (the surface to which the stapes crura are attached), and the origin was on the centroid of the surface. The 3-D feature of the stapes obtained from micro-CT images was used for calculation of the footplate-fixed frame. In the footplate-fixed frame, the long axis of the footplate was set as the  $x$  axis, the short axis of the footplate as the  $y$  axis, and the direction normal to the  $xy$  plane as the  $z$  axis. The posterior, inferior, and lateral directions were set as positive directions for the  $x$ ,  $y$ , and  $z$  axes for the right ear.

Because an inaccurate estimation of position and direction of the footplate in the SLDV measurement frame may produce significant errors in calculation of the rigid body motion components, an accurate way of obtaining the relation between the SLDV measurement frame and the footplate-fixed frame was developed using micro-CT technology. Five to seven retro-reflective glass beads of 50-micron diameter

were placed on the footplate and/or the anterior crus of the stapes. The beads were attached before velocity measurements and were held in position by capillary adhesion during the measurements. After the velocity measurements, while maintaining the SLDV measurement frame, the laser beam was positioned on the beads and the  $X$  and  $Y$  coordinates of the beads in the SLDV measurement frame were recorded by the *PSV V8.5* software. Next, the stapes with glass beads in position was carefully removed from the TBs, and the glass beads were glued onto the stapes. To avoid any displacement of the beads due to the manipulation, a gel-type glue was used, and it was applied from the direction perpendicular to the bony surfaces where the beads were placed. The stapes with glass beads attached was scanned by the micro-CT scanner with a 12-micron resolution to determine their coordinates in the footplate-fixed frame.

Figure 1 illustrates the 3-D shapes of the stapes and micro-glass beads reconstructed from the micro-CT images. The micro-glass beads were clearly visible and distinguishable from bones in the micro-CT images because they were retro-reflective and had much larger x-ray attenuation than the bones. When the gray-scale level on the image was linearly scaled such that the maximum attenuation and no attenuation corresponded to values of 1,000 and 0, the gray-scale values of the bones were below 500 and the values of the beads were above 980. With coordinate values of the glass beads in the SLDV measurement frame and footplate-fixed frame, the relation between these two frames is given by the following equation (Sim 2007).

$$\begin{Bmatrix} X_b \\ Y_b \\ Z_b \end{Bmatrix} = Q \begin{Bmatrix} x_b - x_{\text{shift}} \\ y_b - y_{\text{shift}} \\ z_b - z_{\text{shift}} \end{Bmatrix}, \quad (1)$$

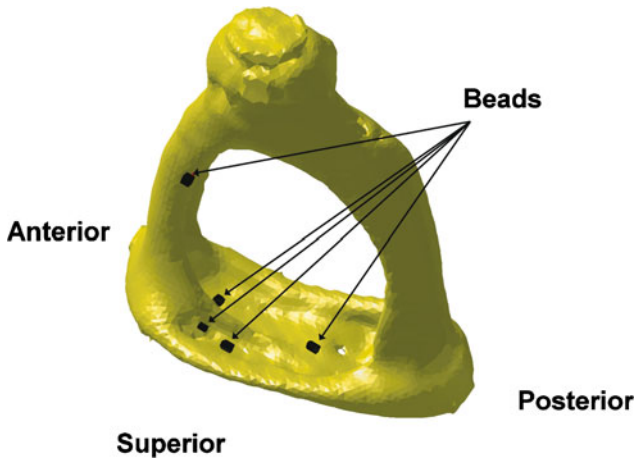
where

$$Q = \begin{bmatrix} \cos \phi \cos \theta & \sin \phi \cos \theta & -\sin \theta \\ \cos \phi \sin \theta \sin \varphi - \sin \phi \cos \varphi & \sin \phi \sin \theta \sin \varphi + \cos \phi \cos \varphi & \cos \theta \sin \varphi \\ \cos \phi \sin \theta \cos \varphi + \sin \phi \sin \varphi & \sin \phi \sin \theta \cos \varphi - \cos \phi \sin \varphi & \cos \theta \cos \varphi \end{bmatrix}.$$

$X_b$ ,  $Y_b$ , and  $Z_b$  are coordinates of the glass beads in the SLDV measurement frame, while  $x_b$ ,  $y_b$ , and  $z_b$  are the corresponding coordinates in the footplate-fixed frame.  $x_{\text{shift}}$ ,  $y_{\text{shift}}$ , and  $z_{\text{shift}}$  indicate the offsets of the origins between the two frames. Three Eulerian angles of  $\varphi$ ,  $\theta$ , and  $\phi$ , which were rotation angles of the footplate-fixed frame with respect to  $z$ ,  $y$ , and  $x$  axes in sequence (Type I, Greenwood 1988), and the offsets  $x_{\text{shift}}$ ,  $y_{\text{shift}}$ , and  $z_{\text{shift}}$  were calculated by correlation of the coordinate values of the glass beads in both frames. To get three Eulerian angles from five or seven reference points, the Levenberg-

Marquardt method, a nonlinear least-square error method provided in *Matlab* (The MathWorks Inc.), was used. Because the  $Z$  coordinate values of the glass beads ( $Z_b$ ) cannot be detected from the SLDV System, Eq. (1) has two sets of the Eulerian angles as a solution. To avoid an unexpected solution set and ‘‘local minimum’’ in the nonlinear least-square error method, approximate adjusting was performed manually before the numerical calculation.

With the obtained relation between the SLDV measurement frame and the footplate-fixed frame, coordinates  $X_m$  and  $Y_m$  of a measurement point  $m$  in



**FIG. 1.** 3-D feature of the stapes with micro-glass beads reconstructed from micro-CT images. After velocity measurements, the glass beads were glued to avoid any displacement during the micro-CT scanning.

the SLDV measurement frame, which were recorded during the velocity measurement by the *PSV V8.5* software, were converted into the corresponding coordinates  $x_m$ ,  $y_m$ , and  $z_m$  in the footplate-fixed frame.

$$\begin{Bmatrix} x_m \\ y_m \\ z_m \end{Bmatrix} = Q^{-1} \begin{Bmatrix} X_m \\ Y_m \\ Z_m \end{Bmatrix} + \begin{Bmatrix} x_{\text{shift}} \\ y_{\text{shift}} \\ z_{\text{shift}} \end{Bmatrix} \quad (2)$$

Because the  $Z$  coordinate value  $Z_m$  of the measurement point could not be measured, Eq. (2) was solved assuming the measurement points were on the  $xy$  plane ( $z_m=0$ ) of the footplate-fixed frame. Figure 2 illustrates the stapes registered in the footplate-fixed frame and measurement points (black dots on the figure) aligned on the  $xy$  plane. With the micro size of the glass beads, the relation between the measurement frame and the footplate-fixed frame could be precisely obtained.

### Calculation of the elementary components in the stapes motion

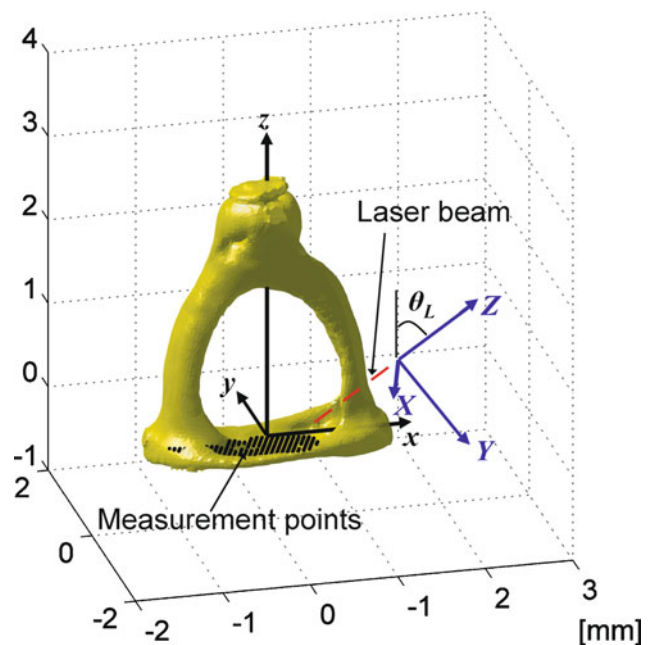
Rigid body motions of the stapes can be described with three translational components and three rotational components about a reference point in a given reference frame. If the annular ring restricts in-plane motions of the stapes footplate considerably, then only three substantial motions of the footplate remain: one translational component in the  $z$  direction at the footplate center and two rotational components about the long and short axes of the footplate (Fig. 3). The translational motion of the footplate center in the  $z$  direction is usually called a piston-like motion, and the two rotational motions are called rocking motions.

In previous studies (Békésy 1960; Kirikae 1960; Heiland et al. 1999; Hato et al. 2003), it has been assumed that due to the shape of the annular ligament and the mechanical stress and strain distribution in it, the in-plane motions of the footplate, which resulted from translational displacements in the  $x$  and  $y$  directions and rotations around the  $z$  axis, are much smaller by magnitudes than the piston-like and rocking motions. Though the restriction of the in-plane motion of the footplate has not been proved and there still exists the possibility that the magnitude of the other components are comparable to the piston-like and rocking motions, it is assumed in this study that the piston-like and two rocking motions are the elementary components of the stapes motions.

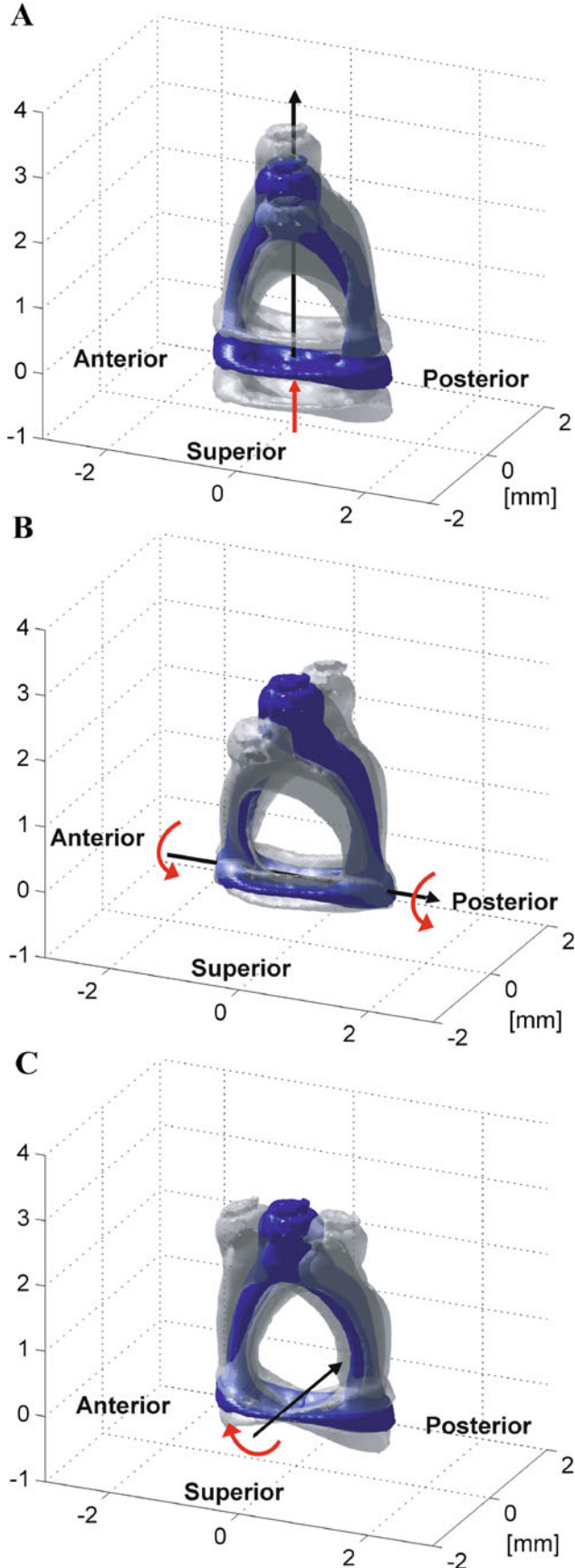
Denoting the rotational velocity along the  $x$  axis as  $\omega_x$ , the rotational velocity along the  $y$  axis as  $\omega_y$ , and the translational velocity of the footplate center (the origin of the footplate-fixed frame) along the  $z$  axis as  $v_{oz}$ , these rigid body motion components are related to the velocity component  $v_{mz}$  of the measured velocity at a point  $m$  on the footplate plane ( $z_m=0$ ) as follows:

$$v_{mz} = v_{oz} + \omega_x y_m - \omega_y x_m. \quad (3)$$

The velocity at the point has only a  $z$ -component because in-plane motions along the footplate plane are assumed to be negligible ( $\omega_z = v_{mx} = v_{my} = 0$ ). With



**FIG. 2.** The stapes of a human ear and measurement points aligned in the footplate-fixed frame. Coordinates of the measurement points in the footplate-fixed frame were calculated by correlation between the SLDV measurement frame  $XYZ$  and footplate-fixed frame  $xyz$ , which was obtained from coordinates of the glass beads in both frames. All measurement points were assumed to be on the  $xy$  plane of the footplate-fixed frame.



◀ **FIG. 3.** Rigid body motion components of the stapes. **A** Translational motion  $v_{oz}$  of the footplate center (piston-like motion), **B** rotational motion  $\omega_x$  around the long axis of the footplate (rocking around the long axis of the footplate), and **C** rotational motion  $\omega_y$  around the short axis of the footplate (rocking around the short axis of the footplate).

an angle  $\theta_L$  between the laser beam direction and the  $z$  axis (shown in Fig. 2), the relation between measured velocities and rigid body motion components of the stapes can be expressed as

$$v_m = \cos \theta_L A v_r \quad (4)$$

where  $v_m$  is a vector with measured velocities,  $A$  is the matrix determined from  $x$  and  $y$  coordinates of the  $n$  measurement points on the footplate, and  $v_r$  is a vector with rigid body motion components

$$v_m = \begin{bmatrix} v_1 \\ v_2 \\ \vdots \\ v_n \end{bmatrix} = e^{i\omega t} \begin{bmatrix} |v_1| e^{i\varphi_1} \\ |v_2| e^{i\varphi_2} \\ \vdots \\ |v_n| e^{i\varphi_n} \end{bmatrix},$$

$$A = \begin{bmatrix} 1 & y_1 & -x_1 \\ 1 & y_2 & -x_2 \\ \vdots & \vdots & \vdots \\ 1 & y_n & -x_n \end{bmatrix},$$

$$v_r = \begin{bmatrix} v_{oz} \\ \omega_x \\ \omega_y \end{bmatrix} = e^{i\omega t} \begin{bmatrix} |v_{oz}| e^{i\varphi_{oz}} \\ |\omega_x| e^{i\varphi_x} \\ |\omega_y| e^{i\varphi_y} \end{bmatrix}.$$

Where  $\omega$  is an angular frequency,  $\varphi_m$  is the phase of the velocity of the measured  $v_m$ , and  $\varphi_{oz}$ ,  $\varphi_x$ , and  $\varphi_y$  indicate the phases of the rigid body motion components  $v_{oz}$ ,  $\omega_x$ , and  $\omega_y$ . Taking more than three non-colinear measurement points into account, the method of least squares error is used to express  $v_r$  by the following relationship

$$v_r = \frac{1}{\cos \theta_L} (A^T A)^{-1} (A^T v_m). \quad (5)$$

In the calculation with Eq. (5), the velocities were taken as complex numbers from their magnitude and phase data.

The phases were recorded for both ear canal pressure and velocities of the points on the footplate, and the phase  $\varphi_m$  of the measured velocity  $v_m$  was obtained as the relative phases with respect to the phase  $\varphi_{EC}$  of ear canal pressure  $P_{EC}$ . Consequently, the phases  $\varphi_{oz}$ ,  $\varphi_x$ , and  $\varphi_y$  of the stapes motion components  $v_{oz}$ ,  $\omega_x$ , and  $\omega_y$  were also calculated with respect to the phase of the ear-canal pressure. The phases of the rotational velocity components were taken in the positive  $x$  (posterior),  $y$  (inferior), and  $z$  (lateral) directions. The distance between the microphone and

the TM was much smaller than the wavelengths of the sound waves at the measurement frequencies; therefore, the effects of the phase delay in the ear canal on the measurement data were negligible.

### Error analysis

The maximum possible error (MPE) in each rigid body motion component was introduced as an estimation of the maximum possible error of the motion component (Eqs. (A.19–A.21)), and the *error ratio* (ER) was obtained as a ratio of the MPE to the magnitude of the corresponding rigid body motion component (Eqs. (A.22–A.24)).

In calculation of the MPE, the actual measurement error at a measurement point could not be measured, and a measurement error measure, as defined in Eq. (A.18) was used. This measurement error measure at a measurement point was calculated from the difference between the measured velocity and the recalculated velocity, which was reversely calculated from the rigid body motion components. In calculating the difference, the complex numbers of the two velocities were taken to consider both magnitude and phase. The difference was also weighted by a factor that described the contribution of the measured velocity to calculation of the rigid body motion components. Definitions and details of the mathematical formulations may be found in the “Appendix.”

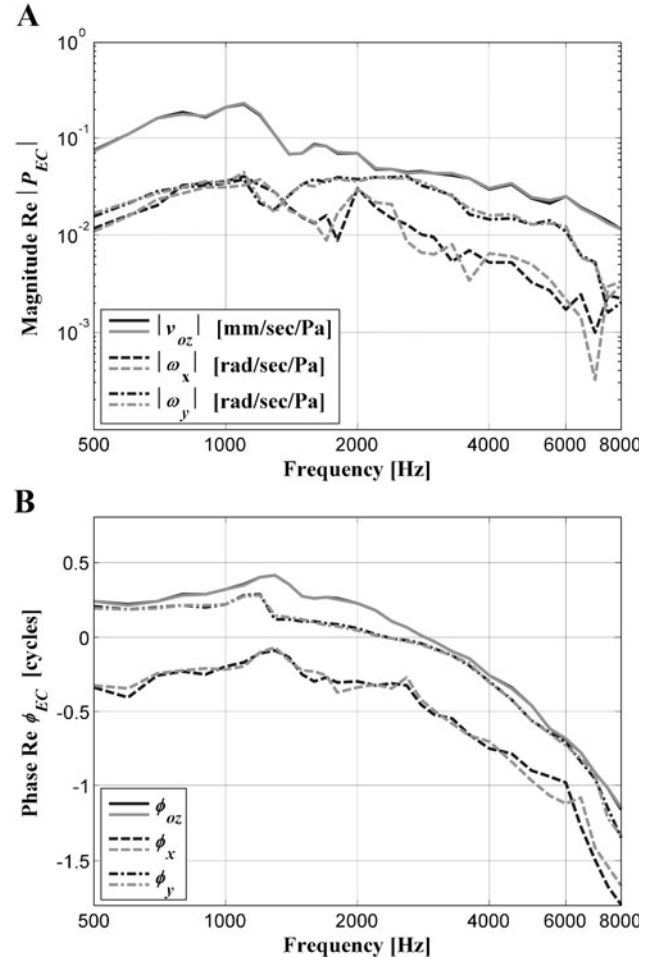
## RESULTS

### Motions of the stapes

Figure 4 illustrates the piston-like and rocking motions calculated from two separate measurements in a temporal bone. The magnitudes of the motion components were normalized by the magnitude  $|P_{EC}|$  of the ear canal pressure, and the phases of the motion components were calculated for the positive  $x$ ,  $y$ , and  $z$  axes relative to the phases  $\phi_{EC}$  of the ear canal pressure, as described in the “Calculation of the elementary components in the stapes motions.” The black lines represent the first measurement, while the gray lines represent the second measurements in the temporal bone. In both magnitude (A) and phase (B), the two measurements showed very good ( $v_{oz}$ ,  $\omega_y$ ) and good ( $\omega_x$ ) repeatability.

Figure 5 illustrates translational velocities  $v_{oz}$  in the  $z$  direction at the center of the footplate normalized by the ear canal pressure as well as their mean values in comparison with the data of Asai et al. (1997) and Hato et al. (2003).

The magnitude of this normalized piston-like motion showed amplitudes between the results from Asai et al. (1997) and Hato et al. (2003) below 2.5 kHz and were



**FIG. 4.** Comparison of the two measurements in a temporal bone. **A** Magnitudes  $|v_{oz}|$ ,  $|\omega_x|$ , and  $|\omega_y|$  and **B** phases  $\phi_{oz}$ ,  $\phi_x$ , and  $\phi_y$  of the piston-like and rocking motion components calculated from the two separate measurements (black: first measurement, gray: second measurement) in a temporal bone. The magnitudes were normalized by the magnitude  $|P_{EC}|$  of ear canal pressure, and the phases were calculated relative to the phase  $\phi_{EC}$  of the ear canal pressure, for the positive  $x$  (posterior),  $y$  (inferior), and  $z$  (lateral) directions.

similar to Asai et al. (1997) above 2.5 kHz. The averaged magnitude had its peak around 1.0 kHz, and the minimum values were around 6.5 kHz. Variation of the phase of the translational motion in the considered frequency range was less than 2 cycles. The six bone measurements showed considerable individual differences in magnitude.

Figure 6 illustrates rotational velocities  $\omega_x$  along the long axis ( $x$  axis) of the footplate normalized by the ear canal pressure (A: magnitude and B: phase).

The averaged magnitude had its peak around 1.0 kHz and the minimum values were around 6.0 kHz. At low frequencies around 500 Hz, the phase of the rotational velocity component in the positive  $x$  direction showed about a half-cycle difference from the phase of the translational velocity component in the positive  $z$  direction at the footplate center

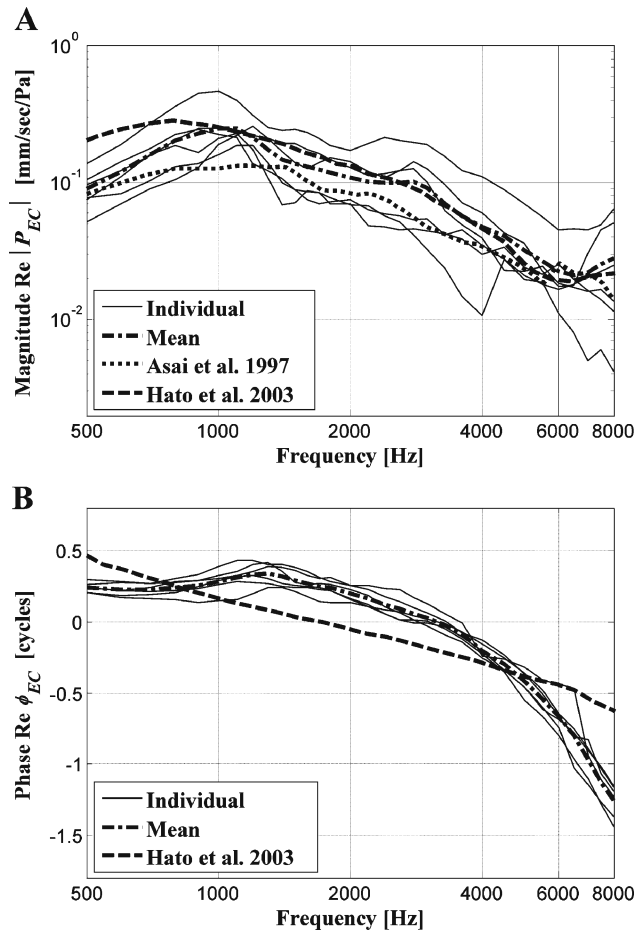


FIG. 5. Translational velocity (piston-like motion)  $v_{oz}$  in the  $z$  direction at the footplate center (piston-like motion) normalized by the ear-canal pressure  $P_{EC}$  in comparison to data from Asai et al. (1997, dotted) and Hato et al. (2003, dashed). **A** Magnitude  $|v_{oz}|$  and **B** phase  $\phi_{oz}$ . The phases were taken from the translational velocity components in the negative  $z$  direction (medial direction).

(Fig. 6B). The phase of the rotational velocity component in the positive  $x$  direction decreased with frequency, showing less than a 2-cycle variation between 0.5 and 8 kHz.

Figure 7 illustrates the rotational velocities  $\omega_y$  along the short axis of the footplate ( $y$  axis), also normalized by the ear-canal pressure (A: magnitude and B: phase).

This component also showed considerable individual differences, especially above 2 kHz. In comparison with the individual data, the magnitude of the rotational velocity along the short axis was not proportional to the magnitude of the rotational velocity along the long axis, and a relation between the two magnitudes could not be found. Around 0.5 kHz, the rotational velocity component in the positive  $y$  direction was almost in-phase with the translational velocity component in the positive  $z$  direction at the footplate center. The phase delay of the rotational velocity along the short axis also tended to increase with frequency. The variation of the phase between 0.5 and 8 kHz was around 1 cycle for the four

measurements and more than 1.5 cycles for the other two measurements.

Comparison of the magnitude of the rotational velocities with the magnitude of the translational velocity at the footplate center cannot be directly done. To show the effect of the rotation, the linear velocities at the inferior and posterior edges of the footplate generated by the rotational velocities were calculated (Heiland et al. 1999; Hato et al. 2003). In this article, the edge velocities are defined as the velocities at the edges only due to the rotational velocities  $\omega_x$  and  $\omega_y$ . The rotational velocity component  $\omega_x$  was multiplied by the half length of the footplate short axis (about 0.6 mm) for the inferior-edge velocity  $v_{inf}$ , and the rotational velocity component  $\omega_y$  was multiplied by the half length of the footplate long axis (about 1.5 mm) for the posterior-edge velocity  $v_{pos}$ . Figure 8 illustrates relative magnitudes (A: inferior-edge velocity and C: posterior-edge velocity) and phases (B: Inferior-edge velocity and D: Posterior-edge velocity) of the edge velocities with respect to the footplate-center velocity in the  $z$

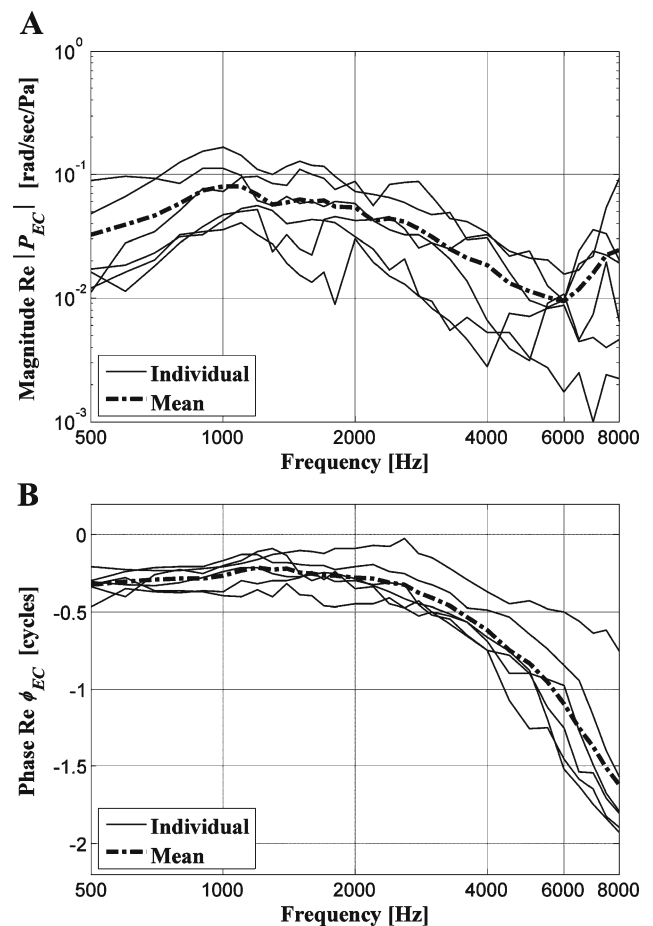


FIG. 6. Rotational velocity (rocking motion)  $\omega_x$  around the long axis normalized by the ear-canal pressure. **A** Magnitude  $|\omega_x|$  and **B** phase  $\phi_x$ . The phases were taken from the rotational velocity components in the positive  $x$  direction (posterior direction).



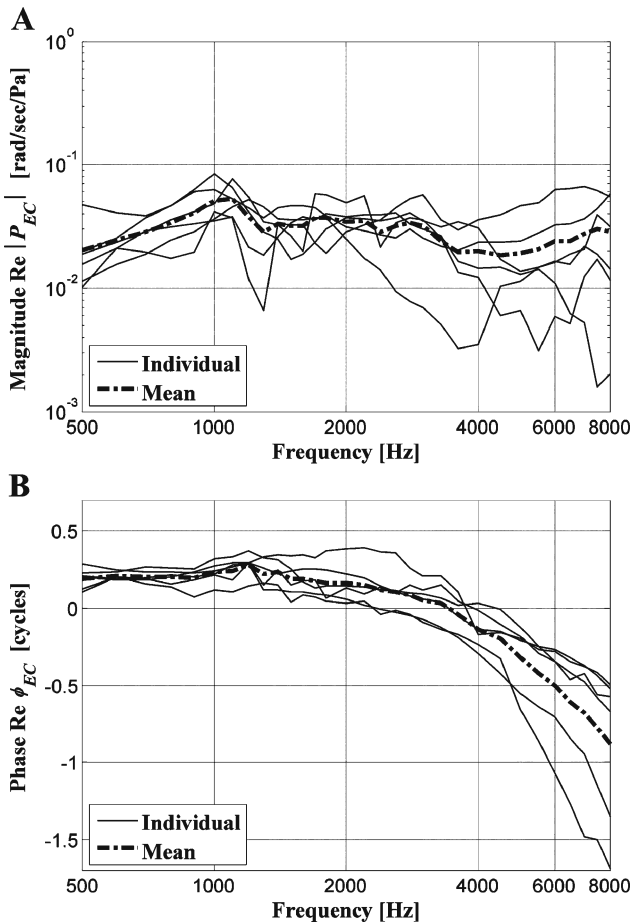


FIG. 7. Rotational velocity (rocking motion)  $\omega_v$  around the short axis normalized by the ear-canal pressure. **A** Magnitude  $|\omega_v|$  and **B** phase  $\phi_v$ . The phases were taken from the rotational velocity components in the positive  $y$  direction (inferior direction).

direction. The relative phases of the edge velocities were calculated by subtracting the phase of the footplate-center velocity in the positive  $z$  direction from the phases of the edge velocities.

The mean ratio of the inferior-edge velocity to the footplate-center velocity began at approximately  $-14$  dB at  $0.5$  kHz, and reached the maximum of  $-7$  dB around  $7.5$  kHz. The mean ratio reported by Hato et al. (2003) had the maximum of about  $5.5$  dB around  $5.5$  kHz. In contrast, our values for this ratio were larger below  $2$  kHz and smaller above  $2$  kHz than the values by Hato et al. The relative phases of the inferior-edge velocities were about  $-0.5$  cycle up to  $2$  kHz in the averaged value and showed large individual differences above  $2$  kHz. This means that the rotational motion along the negative  $x$  axis (anterior direction) is in-phase with the piston-like motion in the positive  $z$  direction (lateral direction) at low frequencies.

The mean ratio of the posterior-edge velocity to the footplate-center velocity tended to increase with frequency, and reached the maximum of  $7$  dB around  $7$  kHz. Our values for this ratio were larger than the

corresponding values reported by Hato et al. (2003) and Heiland et al. (1999) below  $4$  kHz. The relative phase of the posterior-edge velocity was around zero (That is, the rotational motion along the inferior direction was in-phase with the piston-like motion in the lateral direction) below  $1.5$  kHz. Above  $1.5$  kHz, the relative phase of the posterior-edge velocity tended to increase with frequency for the four measurements, while the relative phase did not increase with frequency for the other two measurements.

### Maximum possible error of stapes motion components

Figure 9 illustrates the mean magnitudes of the rigid body motion components normalized by the ear-canal pressure  $|v_{oz}|$ ,  $|\omega_x|$ , and  $|\omega_y|$  and the corresponding MPE  $|v_{oz}|_{MPE}$ ,  $|\omega_x|_{MPE}$ , and  $|\omega_y|_{MPE}$ .

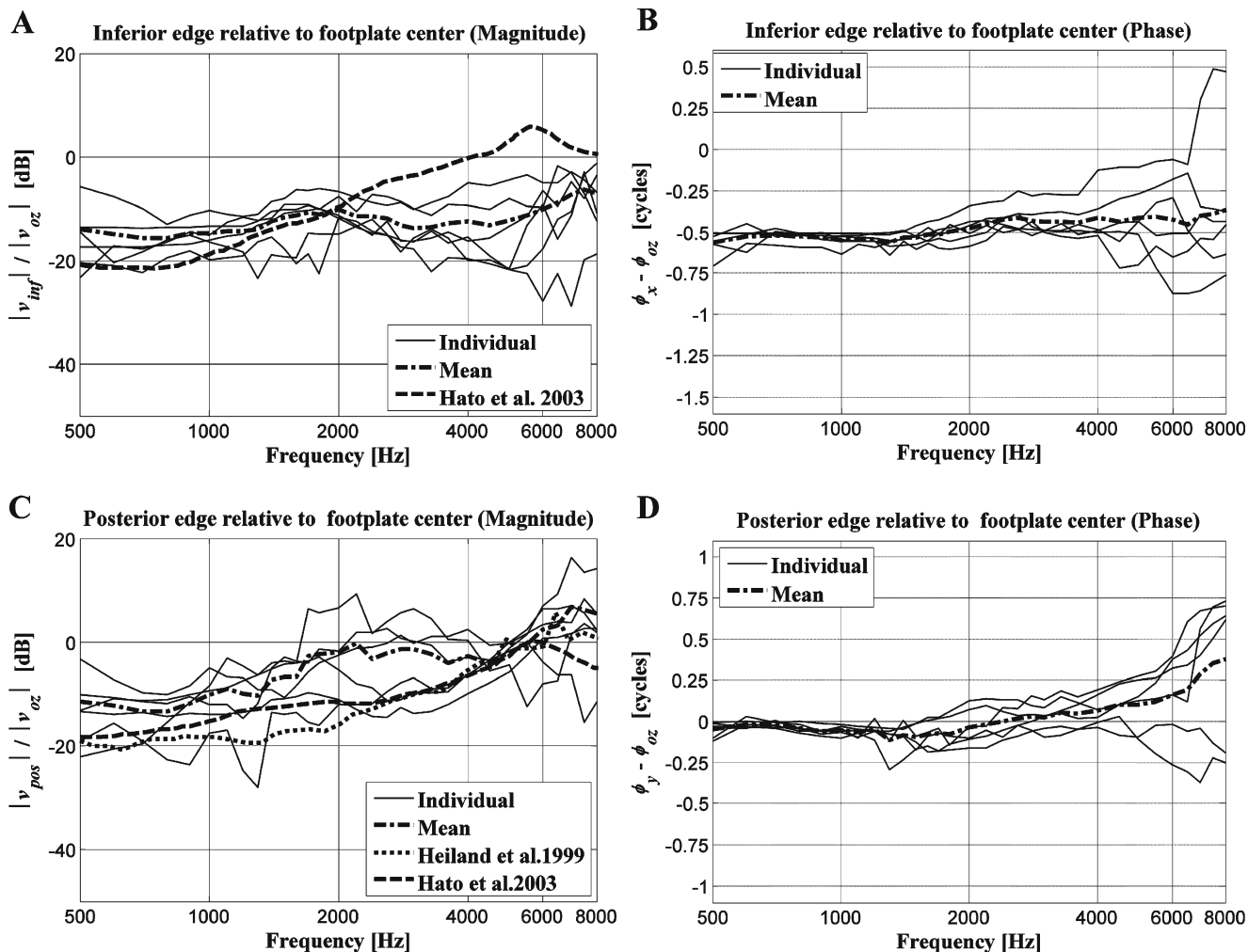
The mean magnitude of the translational velocity at the footplate center normalized to the ear canal sound pressure was much larger than the corresponding maximum possible error across frequency (Fig. 9A). The mean magnitude of the rotational velocity component about the long axis (solid in Fig. 9B) was above the corresponding MPE (dashed in Fig. 9B) up to  $5$  kHz. The mean magnitude of the rotational velocity component along the short axis (dot-dashed in Fig. 9B) was above the corresponding MPE through the whole measurement frequency range (dotted in Fig. 9B).

## DISCUSSION

### Rocking motions

In our measurements, there existed rocking motions comparable to the piston-like motion in the frequency range of measurement (Fig. 8). Such rocking motions are presumed to be caused by the stimuli parallel to the footplate, on the stapes head (excitations in the  $X_H$  and  $Y_H$  in Figure 10, Eiber et al. 2007; Huber et al. 2008).

The excitation in the  $Z_H$  direction mainly generates a piston-like motion, while the excitations in the  $X_H$  and  $Y_H$  directions mainly generate rocking motions about the short and long axes of the footplate. Considering the middle-ear anatomy of the human, stimuli for the rocking motions are expected. The anterior part and posterior parts of the TM in human ears, which are divided by its attachment to the manubrium, have different shapes and sizes. The non-symmetric modes of the TM motions between the anterior and posterior aspects in human ears can cause torsional motions of the malleus (Puria et al. 2007a). Existence of such torsional motions is enhanced by the cross-sectional shape of the malleus handle, which has a circular shape in human (Puria et



**FIG. 8.** Relative magnitudes and phases of the edge velocities due to the rocking of the footplate with respect to the footplate-center velocity (piston-like motion) **A** Relative magnitude and **B** phase of the inferior-edge velocity  $v_{inf}$  due to the rocking of the footplate along the long axis, and **C** relative magnitude and **D** phase of the posterior-edge velocity  $v_{pos}$  due to the rocking of the footplate along the short axis.

al. 2007b). The circular cross-section of the human malleus handle has an isotropic strength against forces in all directions, including the torsional stimuli. The torsional motions of the malleus in human ears are expected to be transferred as various stimulations to the stapes through the deformable joint between the malleus and incus. It is known that cat ears also have a non-symmetric TM, a circular cross-sectional shape in the malleus handle, and a deformable joint between the malleus and incus (Puria et al. 2007a). The vibrational modes of the cat stapes have been studied previously (Guinan and Peake 1967; Decraemer and Khanna 1999; Decraemer et al. 2000), and it was demonstrated that complex modes of stapes motion occur, including rocking motions.

#### Error on the motion components

Considering the magnitudes of the rigid body components reconstructed from measurements and the

corresponding maximum possible errors in physiological motions (Fig. 9), the translational velocity component at the footplate's center is valid, but validities of the rotational velocity components are limited. The rotational velocity around the short axis ( $y$  axis) has good validity along the whole measurement frequency range (0.5 to 8 kHz), while the rotational velocity around the long axis ( $x$  axis) has good validity only below 5 kHz. To get better results for assessing the rocking motion, the signal-to-noise ratio in the LDV measurement should be increased with improved measurement conditions such as reflectivity of the laser beam on the measured surface and performance of the SLDV system. A wider range of measurement area closer to the footplate center and a laser beam direction more perpendicular to the footplate are also desired for better accuracy (see section A.1 in Appendix). However, obtaining such a measurement setup is limited by the surgical access to the stapes. The small measurement area causes large

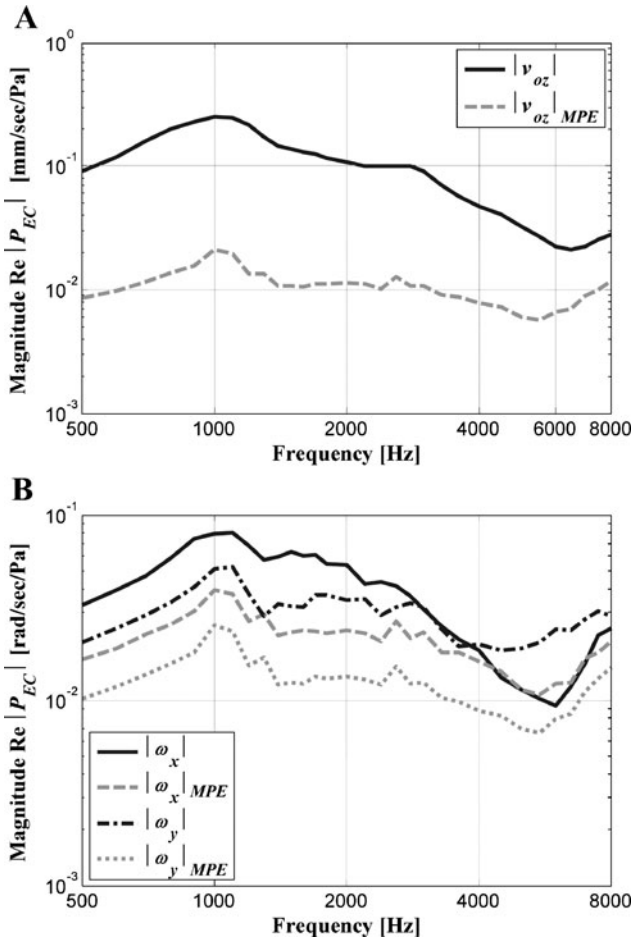


FIG. 9. Mean magnitudes of rigid body motion components (black) and their mean maximum possible errors (MPEs, gray) **A** Translational velocity at the footplate center and **B** rotational velocities around the long and short axes of the footplate.

errors on the rotational velocities by making  $|(lx)_m|$  and  $|(ly)_m|$  in Eq. (A.19–A.20) large. With our surgical access procedure, an angle of approximately  $50^\circ$  to  $60^\circ$  between the laser beam and the footplate plane was obtained. Such limitations in surgical access can be improved by altering the surgical access to expose more area of the footplate.

The footplate position error causes errors in the coordinates of the measurement points and the laser beam direction, and thus errors in the rigid body motion components. In this study, five to seven micro-glass beads of 50-micron diameter were attached to the stapes to obtain a correlation between the SLDV measurement frame and the footplate-fixed frame. Considering the size of the glass bead, the alignment error within the range of  $\pm 4.3$  degrees is expected with five glass beads. The error range becomes smaller by increasing the number of the glass beads or decreasing the size of the glass beads and placing them as far as possible from each other.

## Individual difference

In the magnitudes and phases of all stapes motion components, the measurements showed large standard deviations. The large deviations in the measurements are presumed to be mainly due to large individual differences in middle-ear anatomy (Sim and Puria 2008) as well as the older age of the donors. For the six temporal bones used in this study, the standard deviation of the footplate area was 8.5 % of the averaged values ( $2.97 \pm 0.25 \text{ mm}^2$ ).

## CONCLUSION

For assessing measurements of stapes motion, the maximum possible error was introduced as a reference for error boundaries of the elementary motion components of the stapes. In the measurements of physiological motions with our measurement setup and conditions, the magnitude of the rotational velocity component about the long axis of the footplate was almost the same as the corresponding maximum possible error above 5 kHz. To overcome the small magnitudes of the motion components and get valid results, the measurement conditions such as reflectivity of the laser beam on the measured surface and performance of the SLDV system should be improved.

In this study, micro-CT imaging technology with micro-beads attached to the stapes was introduced to obtain accurate coordinates of the measurement points and laser beam orientation in the footplate-fixed frame.

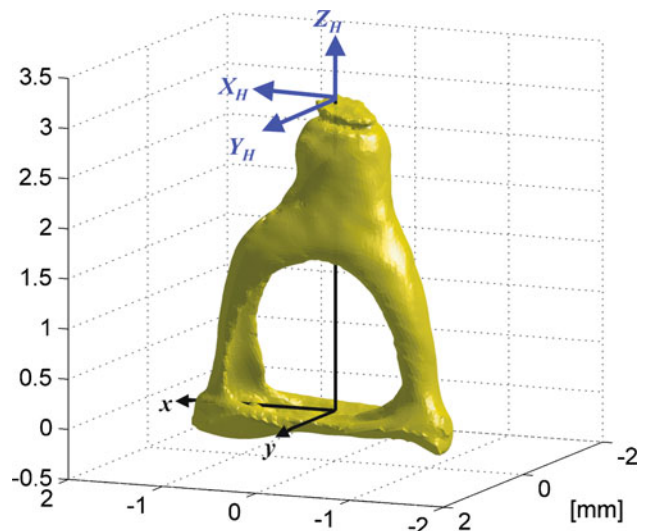


FIG. 10. Excitation of the elementary motion components on the stapes head. The excitation in the  $Z_H$  direction mainly generates a piston-like motion, while the excitations in the  $X_H$  and  $Y_H$  directions mainly generate rocking motions about the short and long axes of the footplate.

In the frequency range of 0.5 to 8 kHz, the magnitudes of the rocking motions were comparable to the magnitude of the piston-like motion, although there were large individual differences. Regardless of whether the rocking motions are desirable or not, a considerable amount of these motions exist, at least in human. Therefore, the detailed contribution of the rocking motions to hearing should be investigated in the future.

## APPENDIX: MAXIMUM POSSIBLE ERROR AND ERROR RATIO

Equation (4) can be written as the following form

$$(A^T A)v_r = \frac{1}{\cos \theta_L} A^T v_m, \quad (\text{A.1})$$

$$\text{with } A^T A = \begin{bmatrix} n & \sum_{m=1}^n y_m & -\sum_{m=1}^n x_m \\ \sum_{m=1}^n y_m & \sum_{m=1}^n y_m^2 & -\sum_{m=1}^n x_m y_m \\ -\sum_{m=1}^n x_m & -\sum_{m=1}^n x_m y_m & \sum_{m=1}^n x_m^2 \end{bmatrix},$$

$$A^T v_m = \begin{bmatrix} \sum_{m=1}^n v_m \\ \sum_{m=1}^n y_m v_m \\ -\sum_{m=1}^n x_m v_m \end{bmatrix}.$$

Because in-plane motions of the footplate are assumed to be constrained (“[Calculation of the elementary components in the stapes motions](#)”), velocities at points on the footplate plane have only the component in the  $z$  direction. The motion of a point on a rigid body can be expressed with translations of a reference point and rotations of the rigid body. Choosing the centroid of the measurement points  $(x_c, y_c)$  as the reference point, the velocity components in the  $z$  direction  $v_{oz}$  at the origin of the footplate-fixed frame can be described with the velocity component in the  $z$  direction  $v_{cz}$  at the centroid of the measurement points and the two rotational velocity components  $\omega_x$  and  $\omega_y$  of the stapes.

$$v_{oz} = v_{cz} - \omega_x y_c + \omega_y x_c, \quad (\text{A.2})$$

where  $x_c = \frac{\sum_{m=1}^n x_m}{n}$  and  $y_c = \frac{\sum_{m=1}^n y_m}{n}$ , assuming that the measurements points on the footplate plane ( $xy$  plane) are equally spaced in the  $x$  and  $y$  directions. The translational velocity in the  $z$  direction at the centroid of the measurement points can be obtained from

$$v_{cz} = \frac{\sum_{m=1}^n v_m}{n \cos \theta_L}. \quad (\text{A.3})$$

The rotational part of the stapes footplate motions follows as

$$\begin{bmatrix} \sum_{m=1}^n \bar{y}_m^2 & -\sum_{m=1}^n \bar{x}_m \bar{y}_m \\ -\sum_{m=1}^n \bar{x}_m \bar{y}_m & \sum_{m=1}^n \bar{x}_m^2 \end{bmatrix} \begin{Bmatrix} \omega_x \\ \omega_y \end{Bmatrix} = \frac{1}{\cos \theta_L} \begin{Bmatrix} \sum_{m=1}^n \bar{y}_m v_m \\ -\sum_{m=1}^n \bar{x}_m v_m \end{Bmatrix}, \quad (\text{A.4})$$

where  $\bar{x}_m = x_m - x_c$  and  $\bar{y}_m = y_m - y_c$  indicate the distances of measurement points from the centroid. As a consequence from Eq. (A.4) the angular velocities follow as

$$\omega_x = \frac{1}{\cos \theta_L} \sum_{m=1}^n (lx)_m v_m \text{ and} \quad (\text{A.5})$$

$$\omega_y = \frac{1}{\cos \theta_L} \sum_{m=1}^n (ly)_m v_m, \quad (\text{A.6})$$

$$\text{where } (lx)_m = \frac{\bar{y}_m \sum_{i=1}^n \bar{x}_i^2 - \bar{x}_m \sum_{i=1}^n \bar{x}_i \bar{y}_i}{\sum_{i=1}^n \bar{x}_i^2 \sum_{i=1}^n \bar{y}_i^2 - \left( \sum_{i=1}^n \bar{x}_i \bar{y}_i \right)^2}$$

$$\text{and } (ly)_m = \frac{-\bar{x}_m \sum_{i=1}^n \bar{y}_i^2 + \bar{y}_m \sum_{i=1}^n \bar{x}_i \bar{y}_i}{\sum_{i=1}^n \bar{x}_i^2 \sum_{i=1}^n \bar{y}_i^2 - \left( \sum_{i=1}^n \bar{x}_i \bar{y}_i \right)^2}.$$

In above equations,  $\sum_{i=1}^n \bar{x}_i^2$  and  $\sum_{i=1}^n \bar{y}_i^2$  are determined by the size of the measurement area, while  $\sum_{i=1}^n \bar{x}_i \bar{y}_i$  is determined by the shape of the measurement area. In the case that the scan area is symmetric with respect to the axes,  $\sum_{i=1}^n \bar{x}_i \bar{y}_i$  becomes zero. The measured velocities  $v_m$  contain a true velocity  $v_m^T$  and a measurement error  $v_m^E$

$$v_m = v_m^T + v_m^E. \quad (\text{A.7})$$

Substituting Eq. (A.3) and (A.7) into Eqs. (A.2), (A.5), and (A.6), the following equations are obtained.

$$\omega_x = \omega_x^T + \omega_x^E = \frac{1}{\cos \theta_L} \sum_{m=1}^n (lx)_m (v_m^T + v_m^E), \quad (\text{A.8})$$

$$\omega_y = \omega_y^T + \omega_y^E = \frac{1}{\cos \theta_L} \sum_{m=1}^n (ly)_m (v_m^T + v_m^E), \quad (\text{A.9})$$

$$v_{oz}^T + v_{oz}^E = \frac{\sum_{m=1}^n (v_m^T + v_m^E)}{n \cos \theta_L} - (\omega_x^T + \omega_x^E) y_c + (\omega_y^T + \omega_y^E) x_c. \quad (\text{A.10})$$

From Eqs. (A.8)–(A.10), it follows,

$$\omega_x^E = \frac{1}{\cos \theta_L} \sum_{m=1}^n (lx)_m v_m^E, \quad (\text{A.11})$$

$$\omega_y^E = \frac{1}{\cos \theta_L} \sum_{m=1}^n (ly)_m v_m^E, \quad (\text{A.12})$$

$$v_{oz}^E = \frac{\sum_{m=1}^n v_m^E}{n \cos \theta_L} - \omega_x^E y_c + \omega_y^E x_c. \quad (\text{A.13})$$

Observing Eqs. (A.11) and (A.12), errors in angular velocities due to measurement errors become smaller with the smaller magnitudes of  $(lx)_m$  and  $(ly)_m$ . The magnitudes of  $(lx)_m$  and  $(ly)_m$  can be reduced by increasing the size of the measurement area. In Eq. (A.13), it is shown that error in the piston-like motion (translational components at the footplate center) is related to the location of the scan area. When the scan area is farther from the center of the footplate (that is, the magnitudes of  $x_c$  and  $y_c$  are larger), errors in angular motions are more reflected into the calculated translational motion of the footplate center. It is also obvious that the smaller  $\theta_L$  results in smaller errors.

The magnitudes of the velocity component errors in Eqs. (A.11)–(A.13) can be bounded by the following relations

$$|\omega_x^E| \leq \frac{1}{\cos \theta_L} \sum_{m=1}^n |(lx)_m| |v_m^E|, \quad (\text{A.14})$$

$$|\omega_y^E| \leq \frac{1}{\cos \theta_L} \sum_{m=1}^n |(ly)_m| |v_m^E|, \quad (\text{A.15})$$

$$|v_{oz}^E| \leq \frac{1}{\cos \theta_L} \times \left( \frac{\sum_{m=1}^n |v_m^E|}{n} + |y_c| \sum_{m=1}^n |(lx)_m| |v_m^E| + |x_c| \sum_{m=1}^n |(ly)_m| |v_m^E| \right). \quad (\text{A.16})$$

If measurement error at each measurement point could be estimated, then the error boundaries of the rigid body motion components could be obtained by Eqs. (A.14)–(A.16). In actual measurements, the measurement error at each point is not known, and it is difficult to estimate. If we reversely calculate the velocity at a measurement point  $k$  from the rigid body motion of the stapes, then we get

$$v'_k = (v_{cz} + \omega_x \bar{y}_k - \omega_y \bar{x}_k) \cos \theta_L. \quad (\text{A.17})$$

The magnitude of the difference between recalculated velocity from the rigid body components (Eq. (A.17)) and original measured velocity can be used

as a measure of the magnitude of error at the point (Hato et al. 2003). However, in calculation of the rotational velocities, the velocity at each point is weighted by the corresponding distance from the centroid of the scan area (Eqs. (A.5) and (A.6)). Therefore, when the rotational velocity components are large, the difference between recalculated velocity and original measured velocity becomes smaller for the points farther from the centroid and larger for the points closer to the centroid. This results in a reduced measure of the measurement error for the farther points and a magnified measure of the error for the closer points. To get a more reasonable measure of the measurement error, we define  $\varepsilon_k$  as a measurement error measure at a measurement point  $k$ ,

$$|\varepsilon_k| = |v'_k - v_k| \cdot \left( \frac{|v_{cz}| + |\omega_x| |\bar{y}_k| + |\omega_y| |\bar{x}_k|}{|v_{cz}| + |\omega_x| |\bar{y}_{i\text{mean}}| + |\omega_y| |\bar{x}_{i\text{mean}}|} \right), \quad (\text{A.18})$$

where  $|\bar{x}_{i\text{mean}}| = \frac{\sum_{i=1}^n |\bar{x}_i|}{n}$  and  $|\bar{y}_{i\text{mean}}| = \frac{\sum_{i=1}^n |\bar{y}_i|}{n}$  are the average distances from the centroid to the measurement points on the stapes footplate in  $x$  and  $y$  axes. In the definition of the measurement error measure above (Eq. (A.18)), the difference between the measured and recalculated velocities is weighted by a factor that describes the contribution of the velocity at a measurement point  $k$  to calculation of the rigid body motion components. Substituting  $|v_m^E| = |\varepsilon_m|$  into Eqs. (A.14)–(A.16), the following MPEs are derived as

$$|\omega_x|_{\text{MPE}} = \frac{1}{\cos \theta_L} \sum_{m=1}^n |(lx)_m| |\varepsilon_m|, \quad (\text{A.19})$$

$$|\omega_y|_{\text{MPE}} = \frac{1}{\cos \theta_L} \sum_{m=1}^n |(ly)_m| |\varepsilon_m|, \quad (\text{A.20})$$

$$|v_{oz}|_{\text{MPE}} = \frac{1}{\cos \theta_L} \times \left( \frac{\sum_{m=1}^n |\varepsilon_m|}{n} + |y_c| \sum_{m=1}^n |(lx)_m| |\varepsilon_m| + |x_c| \sum_{m=1}^n |(ly)_m| |\varepsilon_m| \right). \quad (\text{A.21})$$

Consequently, the error ratio as the ratio of the MPE to the magnitude of the corresponding calculated motion component is calculated as follows:

$$(\omega_x)_{\text{ER}} = \frac{|\omega_x|_{\text{MPE}}}{|\omega_x|} = \frac{\sum_{m=1}^n |(lx)_m| |\varepsilon_m|}{|\omega_x| \cos \theta_L}, \quad (\text{A.22})$$

$$(\omega_y)_{\text{ER}} = \frac{|\omega_y|_{\text{MPE}}}{|\omega_y|} = \frac{\sum_{m=1}^n |(ly)_m| |\varepsilon_m|}{|\omega_y| \cos \theta_L}, \quad (\text{A.23})$$

$$\begin{aligned}
 (v_{oz})_{ER} &= \frac{|u_{oz}^E|_{MPE}}{|u_{oz}|} \\
 &= \frac{\sum_{m=1}^n |\varepsilon_m| + n|y_c| \left| \sum_{k=1}^n |(lx)_m| |\varepsilon_m| + n|x_c| \left| \sum_{m=1}^n |(ly)_m| |\varepsilon_m| \right. \right.}{|u_{oz}| n \cos \theta_L}.
 \end{aligned}
 \tag{A.24}$$

## REFERENCES

- ASAI M, ROBERSON JB, GOODE RL (1997) Acoustic effect of malleus head removal and tensor tympani muscle section on middle ear reconstruction. *Laryngoscope* 107(9):1217–1222
- BÉKÉSY G (1960) *Experiments in Hearing*. New York, McGraw-Hill
- DE LA ROCHEFOUCAULD O, DECRAEMER WF, KHANNA SM, OLSON ES (2008) Simultaneous measurements of ossicular velocity and intracochlear pressure leading to the cochlear input impedance in gerbil. *JARO* 9(2):161–177
- DECRAEMER WF, KHANNA SM (1999) In: ROSOWSKI JJ, MERCHANT S (eds) *New insight in the functioning of the middle-ear; The function and mechanics of normal, diseased, and reconstructed middle ears*. Kugler Publication, The Hague, The Netherlands, pp 23–38
- DECRAEMER WF, KHANNA SM, FUNNELL WRJ (2000) Measurement and modeling of the three-dimensional vibration of the stapes in cat. *Proceeding of the Symposium on Recent Developments in Auditory Mechanics*. In: Wada H, Takasaka K, Ikeda K, Phiyama K, Koike T (eds). World Scientific. pp 36–43
- DECRAEMER WF, DE LA ROCHEFOUCAULD O, DONG W, KHANNA SM, DIRCKX JJ, OLSON ES (2007) Scala vestibuli pressure and three-dimensional stapes velocity measured in direct succession in gerbil. *J Acoust Soc Am* 121(5):2774–2791
- DODSON JM (2001) *Efficient finite element methods/ Reduced-order modelling for structural acoustics with applications to transduction*. Ph.D. Thesis, University of Michigan, Ann Arbor, MI
- EIBER A, BREUNINGER C, SEQUEIRA D, HUBER A (2007) Mechanical excitation of complex stapes motion in guinea pigs. In: Huber A, Eiber A (eds) *Middle ear mechanics in research and otology*, Zurich, Switzerland. World Scientific Press, Singapore, pp 123–129
- GREENWOOD DT (1988) Eulerian angles. In: *Principles of dynamics*. Prentice Hall, New Jersey, pp 354–358
- GUINAN JJ, PEAKE WT (1967) Middle-ear characteristics of anesthetized cats. *J Acoust Soc Am* 41:1237–1261
- HATO N, STENFELT S, GOODE RL (2003) Three-dimensional stapes footplate motion in human temporal bones. *Audiol Neurootol* 8:140–152
- HEILAND KE, GOODE RL, ASAI M, HUBER AM (1999) A human temporal bone study of stapes footplate movement. *AMJ Otol* 20:81–86
- HUBER AM, LINDER T, FERRAZZINI M, SCHMID S, DILLIER N, STOECKLI S, FISCH U (2001) Intraoperative assessment of stapes movement. *Ann Otol Rhinol Laryngol* 110:31–35
- HUBER AM, SEQUEIRA D, BREUNINGER C, EIBER A (2008) The effect of complex stapes motion on response of the cochlea. *Otology & Neurotology* 29(8):1187–1192
- KIRIKAE J (1960) *The structure and function of the middle ear*. Tokyo, University of Tokyo Press
- KOLSTON PJ, ASHMORE JF (1996) Finite element micromechanical modelling of the cochlea in three dimensions. *J Acoust Soc Am* 99:455–467
- LIM KM, STEELE CR (2002) A three-dimensional nonlinear active cochlea model analyzed by the WKB-numeric method. *Hear Res* 170:190–205
- PURIA S, SIM JH, SHIN M, STEELE CR (2007A) A gear in the middle ear. The 30th Association for Research in Otolaryngology Winter Research Meeting, Denver, Colorado
- PURIA S, SIM JH, SHIN M, TUCK-LEE J, STEELE CR (2007B) Middle ear morphometry from cadaveric temporal bone micro-CT imaging. In: Huber A, Eiber A (eds) *Middle ear mechanics in research and otology*, Zurich, Switzerland. World Scientific Press, Singapore, pp 259–268
- RAVICZ ME, COOPER NP, ROSOWSKI JJ (2008) Gerbil middle-ear sound transmission from 100 Hz to 60 kHz. *J Acoust Soc Am* 124:363–380
- SIM JH (2007) *Imaging, physiology, and biomechanics of the malleus-incus complex*. Ph.D. Thesis at Stanford University, Stanford, CA, USA
- SIM JH, PURIA S (2008) Soft tissue morphometry of the malleus-incus complex from micro-CT imaging. *JARO* 9:5–21