



**University of  
Zurich**<sup>UZH</sup>

**Zurich Open Repository and  
Archive**

University of Zurich  
University Library  
Strickhofstrasse 39  
CH-8057 Zurich  
[www.zora.uzh.ch](http://www.zora.uzh.ch)

---

Year: 2006

---

## **Chronic obstructive pulmonary disease: current burden and future projections**

Lopez, A D ; Shibuya, K ; Rao, C ; Mathers, C D ; Hansell, A L ; Held, L S ; Schmid, V ; Buist, S

DOI: <https://doi.org/10.1183/09031936.06.00025805>

Posted at the Zurich Open Repository and Archive, University of Zurich

ZORA URL: <https://doi.org/10.5167/uzh-36471>

Journal Article

Originally published at:

Lopez, A D; Shibuya, K; Rao, C; Mathers, C D; Hansell, A L; Held, L S; Schmid, V; Buist, S (2006). Chronic obstructive pulmonary disease: current burden and future projections. *European Respiratory Journal*, 27(2):397-412.

DOI: <https://doi.org/10.1183/09031936.06.00025805>



## SERIES “THE GLOBAL BURDEN OF CHRONIC OBSTRUCTIVE PULMONARY DISEASE”

Edited by K.F. Rabe and J.B. Soriano

Number 2 in this Series

# Chronic obstructive pulmonary disease: current burden and future projections

A.D. Lopez\*, K. Shibuya#, C. Rao\*, C.D. Mathers#, A.L. Hansell<sup>1</sup>, L.S. Held<sup>+</sup>, V. Schmid<sup>+</sup> and S. Buist<sup>§</sup>

### CONTENTS

#### Estimating the burden of COPD

A.D. Lopez, K. Shibuya, C. Rao and C.D. Mathers . . . . . 397

#### Projecting the future burden of COPD

A.L. Hansell, L.S. Held and V. Schmid . . . . . 403

### ESTIMATING THE BURDEN OF COPD: METHODS AND RESULTS FROM THE GLOBAL BURDEN OF DISEASE STUDY

#### Summary

Information about the comparative magnitude of the burden from various diseases and injuries is a critical input into building the evidence base for health policies and programmes. Such information should be based on a critical evaluation of all available epidemiological data using standard and comparable procedures across diseases and injuries, including information on the age at death and the incidence, duration and severity of cases who do not die prematurely from the disease. A summary measure, disability-adjusted life yrs (DALYs), has been developed to simultaneously measure the amount of disease burden due to premature mortality and the amount due to the nonfatal consequences of disease.

Approximately 2.7 million deaths from chronic obstructive pulmonary disease (COPD) occurred in 2000, half of them in the Western Pacific Region, with the majority of these occurring in China. About 400,000 deaths occur each year from COPD in industrialised countries. The increase in global COPD deaths between 1990 and 2000 (0.5 million) is likely to be partly real, and partly due to better methods and more extensive data availability in 2000. The regional (adult) prevalence in 2000 varied from 0.5% in parts of Africa to 3–4% in North America.

#### Introduction

Health systems must increasingly address a broad spectrum of health issues, ranging from epidemic outbreaks to advanced therapeutic care. They must, or should, also support disease prevention and health-promotion activities. Recognising that resources for health were unlikely to grow as quickly as demand, in 1993, the World Bank proposed a series of intervention packages for countries at different stages of development which, if implemented, would probably lead to the greatest gains in population health at affordable cost. The evidence for these recommendations was based on a study of the global burden of disease from various conditions, and an assessment of the cost-effectiveness of known interventions against them.

The Global Burden of Disease (GBD) Study, commissioned for the Bank Report, was the first ever comprehensive attempt to simultaneously assess the burden of premature mortality and nonfatal illness due to >100 diseases and injuries worldwide [1]. To assess burden, a summary measure of population health, DALYs, was used, with the stream of yrs of life lost (YLL) or yrs lived with disability (YLD) assessed separately. Thus, for any disease or injury (*i*) (e.g. lung cancer, road traffic accidents, measles), premature mortality was assessed as the following:

$$YLL = \sum_x d_x^i \cdot e_x \quad (1)$$

**Previous articles in this series: No. 1:** Chapman KR, Mannino DM, Soriano JB, *et al.* Epidemiology and costs of chronic obstructive pulmonary disease. *Eur Respir J* 2006; 27: 188–207.

This article has supplementary material accessible from [www.erj.ersjournals.com](http://www.erj.ersjournals.com).

#### AFFILIATIONS

\*University of Queensland, Brisbane, Australia.

#World Health Organization, Geneva, Switzerland.

<sup>1</sup>Imperial College School of Medicine, London, UK.

<sup>+</sup>Ludwig-Maximilians-University, Munich, Germany.

<sup>§</sup>Portland Oregon Health & Science University, Portland, OR, USA.

#### CORRESPONDENCE

S. Buist  
Portland Oregon Health & Science University  
Mail Code UHN 67  
3181 SW Sam Jackson Park Road  
Portland  
OR 97239-3098  
USA  
Fax: 1 5034181497  
E-mail: [buists@ohsu.edu](mailto:buists@ohsu.edu)

Received:  
March 04 2005  
Accepted after revision:  
August 15 2005

where  $d_x^i$  are deaths from cause  $i$  at age  $x$  and  $e_x$  is the standard expectation of life lost due to death at age  $x$  [1]. To assess YLDs, the principal disabling sequelae ( $j$ ) from cause  $i$  were first identified and, for each sequela, age- and sex-specific incidence ( $I$ ) was estimated, as was average age at onset, duration ( $D$ ) and severity ( $S$ ), on a scale of 0–1 (0=perfect health, 1=death). The methods and estimation procedures are described in detail elsewhere [1]. Thus, the following equation holds:

$$YLD = \sum_x \sum_j I_x^j \cdot D_x^j \cdot S_x^j \quad (2)$$

Overall disease burden, measured by DALYs, was then estimated as the sum of the two components:

$$DALY = YLL + YLD \quad (3)$$

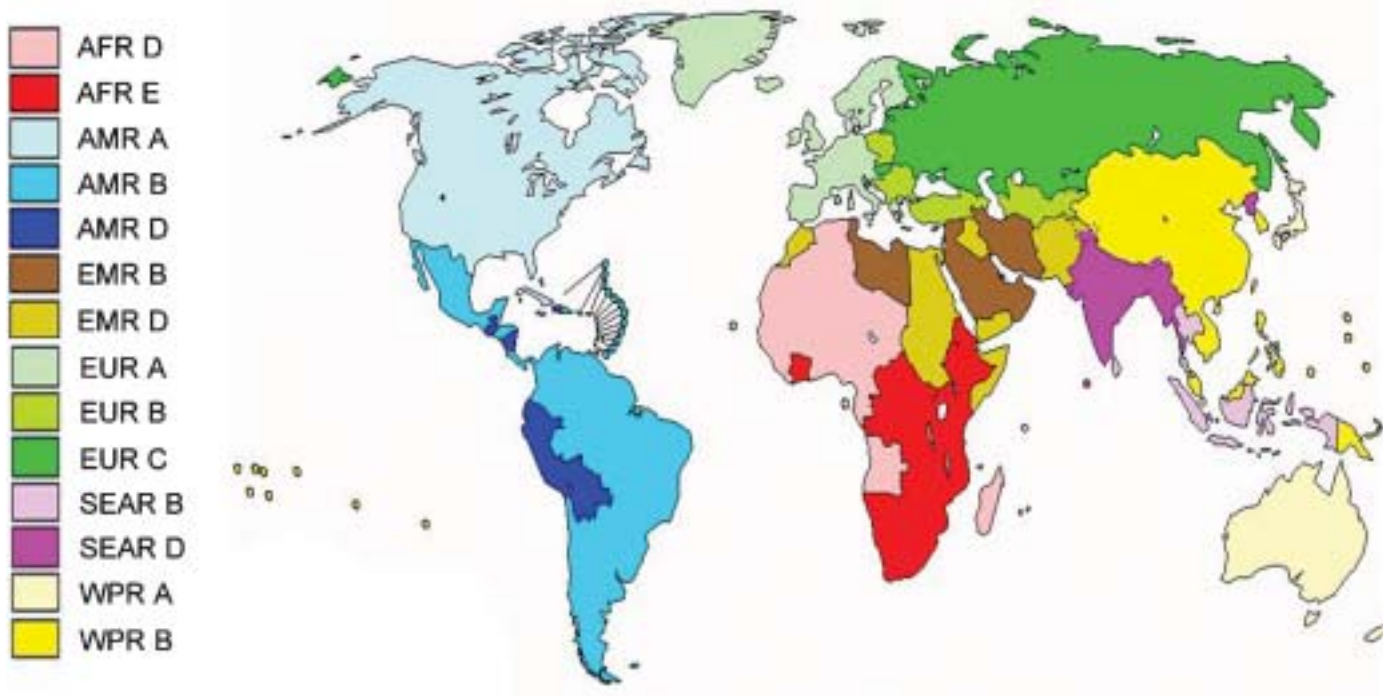
Internal epidemiological consistency for each condition was forced through a disease model, which simultaneously estimated age-specific incidence, case fatality, prevalence, duration and general background mortality [2].

The base year for the original GBD Study was 1990. The World Health Organization (WHO) subsequently agreed to prepare a revised assessment for the year 2000, the GBD 2000 Study. With the substantial interest in the GBD 1990 Study, there have been several methodological improvements to the way that epidemiological estimates are prepared, to the architecture of DALYs, as well as a very substantial increase in the amount of epidemiological data available [3]. The current authors describe the basis for deriving the epidemiological estimates required to compute DALYs from COPD. The key challenge is to estimate age- and sex-specific death rates from COPD, by

region (there were eight World Bank regions in the 1990 Study and 14 WHO epidemiological regions in the 2000 Study (fig. 1)), as well as incidence, prevalence and other epidemiological parameters by age, sex and region. In this paper, the current authors' aim is to describe the methods and summarise the key findings from the GBD 2000 Study, and to evaluate the impact of the major methodological advances over the methods and approaches used in 1990 on the comparability of findings across the two periods.

**Estimating COPD mortality**

Each year, ~100 countries worldwide report data from their vital registration systems on causes of death in their populations [4]. The quality and coverage of these statistics vary enormously, yet they are of major relevance for public health. Vital registration systems that capture all deaths in a population, and include a medical certificate completed by a qualified practitioner as to the medical conditions preceding death, are the "gold standard" for assessing causes of death. Yet, in many countries, these systems either fail to capture all deaths, fail to provide a specific clinical diagnosis as to the underlying cause of death, or provide an incorrect cause. This is true even for developed countries. Thus, many deaths coded to heart failure or ventricular dysrhythmias, for example, in countries such as Japan, Spain or France would, in the USA, UK or Australia, be more likely to be recognised as due to ischaemic heart disease [1]. The implications of such miscoding can be substantial. For example, when correction algorithms for vascular disease miscoding were applied in the 1990 GBD Study, ischaemic heart disease mortality rates in Japan, France, Brazil and several other countries were estimated to be



**FIGURE 1.** The World Health Organization mortality subregions used in the Global Burden of Disease 2000 Study. A: very low child and adult mortality; B: low child and adult mortality; C: low child mortality and high adult mortality; D: high child and adult mortality; E: high child mortality and very high adult mortality; AFR: Africa; AMR: Americas; EMR: Eastern Mediterranean; EUR: Europe; SEAR: South-East Asia; WPR: Western Pacific.

50–200% higher than reported [1]. It is unclear whether there are similar systematic certification and coding biases across countries for COPD; however, studies of multiple-cause coding suggest that there might be [5].

In addition to vital registration, other sources of cause-specific mortality data for populations were identified and evaluated, including large-scale epidemiological surveillance systems on a sample basis in China and Tanzania, and, where available, community-based epidemiological research studies and disease registers (e.g. cancer). Since claims about causes of death are often made by disease-specific groups working in isolation from others (e.g. HIV, malaria), they are often exaggerated and, when summed, greatly exceed independent demographic estimates of total mortality in any given age or sex group. This is especially true for children and young adults where the impact of most major communicable diseases and conditions of poverty is primarily concentrated. As a first step, the “envelope” of mortality by age, sex and region was first estimated from demographic databases, and the estimates of cause-specific mortality from the >100 causes examined in the GBD Study were constrained to sum to this number of deaths.

For countries with vital registration data, the following procedure was adopted to estimate cause-specific death rates, including COPD. 1) Where vital registration was incomplete, data were first corrected for undercount using standard demographic methods. 2) Ill-defined causes were redistributed *pro rata* across defined causes (i.e. deaths with a specific International Classification of Diseases (ICD) underlying cause), and deaths of those aged >5 yrs were distributed across chronic diseases only. 3) For countries/regions where cause of death registration was considered reliable, COPD mortality was estimated directly from the data. For each remaining region, available epidemiological information and disease models were used to first estimate broad cause of death groups, by age and sex (group I: communicable, maternal, perinatal, nutritional; group II: noncommunicable; group III: injuries) [6]. For each region, a regional “template” of cause-specific mortality was first constructed using local epidemiological evidence, including sample registration and disease registries. This template was then applied to the broad group II estimates of mortality by age and sex to estimate specific COPD mortality.

Clearly, the estimation procedure in the absence of good vital registration is highly uncertain and yields, at best, possibly plausible estimates of mortality rather than observed numbers of deaths from COPD. Any systematic biases or miscoding of COPD inherent in the local epidemiological evidence used to construct the regional template of proportional mortality would be reflected in the regional mortality estimates. Using these methods, COPD was estimated to have been the cause of ~2.75 million deaths in 2000, half of them in the Western Pacific region, and most of these in China. Another 650,000 COPD deaths were estimated to have occurred in the South-East Asia region, largely in India (table 1). In the industrialised countries as a whole (the very low child and adult mortality (A) regions), COPD caused ~300,000 deaths, or 10% of the global total. Worldwide, 1.9% of DALYs were attributable to COPD in 2000; these estimates show some regional variability

**TABLE 1** Estimated chronic obstructive pulmonary disease deaths and disability-adjusted life yrs (DALYs) by World Health Organization (WHO) region, 2002

Region	Deaths thousands	DALYs thousands	% of regional total DALYs
AFR A	52	514	0.3
AFR E	65	668	0.3
AMR A	141	1743	3.7
AMR B	90	1419	1.7
AMR D	10	195	1.1
SEAR B	100	1420	2.3
SEAR D	556	6740	1.9
EUR A	140	1744	3.4
EUR B	45	673	1.8
EUR C	76	1036	1.7
EMR B	15	349	1.5
EMR D	80	989	0.9
WPR A	21	415	2.5
WPR B	1354	9820	4.0
World	2748	27756	1.9

A: very low child and adult mortality; B: low child and adult mortality; C: low child mortality and high adult mortality; D: high child and adult mortality; E: high child mortality and very high adult mortality; AFR: Africa; AMR: Americas; SEAR: South-East Asia; EUR: Europe; EMR: Eastern Mediterranean; WPR: Western Pacific. The mortality strata (A–E) were used to distinguish groupings of countries likely to be at a similar level of health development among the member states of the WHO regions. Adapted from [7].

according to WHO subregions defined on the basis of epidemiological and demographic transition (table 1).

The same broad approach to estimating COPD mortality was adopted in 1990, but with less rigorous methods for estimating group I/II/III and all-cause mortality, and with less vital registration data. In that year, 2.2 million deaths were estimated from COPD, although it is difficult to know whether the increase over the decade (0.55 million deaths) is real or largely due to these methodological and data advances. Certainly, a key driver of global mortality from COPD is China and, until a competent evaluation of the Chinese Disease Surveillance Points System is carried out, which is the primary source of epidemiological data for the country, the regional and, hence, global estimates of COPD mortality will remain uncertain [8].

### Estimating prevalence

Despite the fact that COPD is now prevalent in both developed and developing countries, largely as a result of the tobacco epidemic, reliable estimates of its prevalence are surprisingly scant in most parts of the world [9–11]. There is now a consensus that COPD is characterised by airways obstruction with lung function levels of forced expiratory volume in one second (FEV<sub>1</sub>)/forced vital capacity <70% and presence of a post-bronchodilator FEV<sub>1</sub> <80% of the predicted value that is not fully reversible [12, 13]. However, population-based estimates of COPD prevalence by region are problematic,

since the disease is progressive, measurement tools and definitions still vary among studies, and implementation of spirometry is often not feasible in developing regions [14].

In such circumstances, observed incidence and prevalence become highly dependent on factors other than the true occurrence of disease. For example, prevalence based on self-reported symptoms (chronic cough, sputum, *etc.*) probably overestimates true COPD prevalence due to misclassification of other possible respiratory diseases. Typically, only about half of the patients with symptoms of chronic bronchitis actually have COPD as assessed by spirometry (table 2). Conversely, physician diagnosis usually underestimates true COPD prevalence. In the USA, for instance, ~60–70% of those with lower FEV<sub>1</sub> have never had a diagnosis of COPD [15]. Furthermore, there is a considerable variation among studies in terms of case definition, study design, sample size and data analysis, which makes comparisons among studies difficult.

Even in the industrialised (A) regions, there is little consensus across definitions as to the true prevalence of COPD. Moreover, since prevalence figures are not available in many developing regions, an alternative approach is needed. What the current authors have done is to infer disease occurrence from mortality figures, with the help of the mathematical constraints imposed by forcing consistent epidemiological relationships among prevalence/incidence, remission and mortality rates [16]. The disease model, DISMOD, is used to back-calculate consistent estimates of COPD incidence and prevalence [3]. The main advantage of this approach is that incidence, prevalence and mortality estimates are iteratively linked through the causal chain of a disease process, and this chain limits the possible combinations of incidence, prevalence and mortality rates [2]. Limits can be imposed, since any prevalent case must have become incident at a younger age,

and any person who died with a disease must have become incident previously, and have been prevalent.

Methods

In order to estimate prevalence of COPD in a disease model linking incidence, prevalence, duration and case fatality, the relative risk of dying from COPD mortality (or the case-fatality rate) is required [16–19]. One approach to approximating the relative risk (RR) of COPD mortality is to use information on risk factors associated with COPD (*i.e.* RR=DR<sub>1</sub>/DR<sub>0</sub> where DR<sub>1</sub> and DR<sub>0</sub> are death rates in exposed (1) and unexposed (0) groups). COPD mortality was modelled as a function of risk factors and other possible determinants, along with regional fixed effects of the following form:

$$r_{ij} = M_{ij}/PY_{ij} = \exp(\alpha + \sum_i \beta_i X_i + \Phi_j \text{REGION}_j + \varepsilon_{ij}) \quad (4)$$

where  $r_{ij}$  is age- and sex-specific COPD mortality rate,  $M_{ij}$  is number of deaths in each age group,  $PY_{ij}$  is person-yr at risk approximated by mid-yr population by age and sex,  $X_i$  is risk factor variables, and  $\text{REGION}_j$  is regional fixed effect.

Goodness of fit and deviation of errors were assessed to choose the best fit regression model. By modelling in this way, the RR of death from COPD for each region can be approximated by the relative impact of COPD risk factors. In other words:

$$\text{RR} = \text{DR}_1/\text{DR}_0 = \exp(\sum_i \beta_i (X_{i1} - X_{i0})) \quad (5)$$

Three major risk factors have been identified for COPD, namely: 1) cigarette smoking; 2) heavy exposure to occupational and indoor air pollution; and 3)  $\alpha_1$ -antitrypsin deficiency [9, 12, 13, 20]. While cigarette smoking accounts for 80–90% of COPD risks in developed countries, smoking behaviour alone is not sufficient to explain the geographical difference in prevalence rate of symptoms [9, 21]. Studies have suggested that the prevalence rate for symptoms increases with increasing levels of air pollution, independent of cigarette consumption, indicating that outdoor and indoor air pollution may account for the geographical differences. Several studies in developing countries have shown a significant relationship between female COPD prevalence and the use of biofuels [22, 23].

Although excess mortality has been noted during periods of excessive outdoor air pollution in both developed and developing countries, to date, the role of outdoor air pollution in the aetiology of COPD remains unclear [9, 24]. WHO's Comparative Risk Assessment database provides information on exposure to both smoking and indoor air pollution by region [25]. Although data on occupational dust exposure is not yet widely available, its role is thought to be much smaller compared with that of cigarette smoking and indoor air pollution [26]. Finally, severe  $\alpha_1$ -antitrypsin deficiency is a recessive trait common in individuals from Northern Europe and virtually absent from other populations. Prevalence is estimated to be much less than 1% in the general population and has thus been excluded from the model.

Other potential factors related to COPD prevalence include age, sex, race/ethnicity and socio-economic status [12]. Increasing prevalence with advancing age may reflect either

**TABLE 2** Estimated differences in chronic obstructive pulmonary disease regional prevalence according to definition used for age groups ≥30 yrs

Region	Prevalence %		
	Symptoms	Physician diagnosis	Spirometry
AFR D	1–3		
AMR A	5–15	1–3	2–5
AMR B	5–13		
EMR B	2–10		1–2
EUR A	10–20	2–5	3–7
EUR B	10–20		
SEAR D	2–7		
WPR A	10–15		2–5
WPR B	2–8		1–3

Regions without prevalence studies have been omitted. A: very low child and adult mortality; B: low child and adult mortality; D: high child and adult mortality; AFR: Africa; AMR: Americas; EMR: Eastern Mediterranean; EUR: Europe; SEAR: South-East Asia; WPR: Western Pacific. See Supplementary material on website for information regarding the source of these data.

cumulative exposure to smoking and other risk factors, loss of elasticity of lung tissue or both. To take this factor into account, the current model incorporates age as an independent variable.

In general, COPD is more prevalent in males, reflecting differential exposure to risk factors. However, a higher COPD prevalence has been observed among females in the South-East Asia region than males due to indoor air pollution [22, 27]. Sex has been included as a variable in the model to adjust for the sex differential in risk exposure and possibly in susceptibility, since the data on biofuel use is only available as a proportion of the population exposed. It has also been suggested that higher COPD prevalence is observed among certain races and ethnic groups, but this is most likely due to confounding by differences in exposure to risk factors, access to healthcare, *etc.*

The final regression model used in the GBD 2000 Study was as follows:

$$r_{ijk} = M_{ijk}/PY_{ijk} = \exp(\alpha + \beta_1 SIR_{ijk} + \beta_2 AIR_{ijk} + \lambda_i SEX_i + \delta_j AGE_j + \phi_k REGION_k + \varepsilon_{ijk}) \quad (6)$$

where SIR is the smoking impact ratio that approximates cumulative past exposure to smoking [21], AIR is a proportion of households using biofuel, and SEX and AGE are dummy variables for sex and age, respectively.

From this regression model, the relative risk of COPD-related mortality can be approximated by:

$$RR = DR_1/DR_0 = \exp(\beta_1(SIR_1 - SIR_0) + \beta_2(AIR_1 - AIR_0)) \quad (7)$$

where  $SIR_0$  and  $AIR_0$  are set to zero in the unexposed groups.

A further advantage of this approach is that it yields an independent estimate of age- and sex-specific regional mortality from COPD, derived using a quite different (regression-based) approach to that described earlier. The results of the two approaches are compared in the following section.

#### Disability weights

Some estimate of the severity of COPD in patients is required in order to determine disability weights and, hence, YLDs from the disease. The traditional approach to caring for COPD patients has been to rely on pulmonary function testing to quantify severity, and to assess response to therapy. However, patients with COPD seek medical care because of symptoms, in particular dyspnoea and inability to function, which clearly have an impact on an individual's health-related quality of life (HRQoL). Accordingly, instruments have been developed to provide a standardised method to measure health status and levels of disability [28].

It has been suggested that when the FEV<sub>1</sub> falls to ~50% of that predicted for a healthy population, the individual typically first experiences some activity limitation because of dyspnoea. When FEV<sub>1</sub> reaches a level of 30–40% of that predicted, there would be significant exercise limitations, which can be severely disabling [29, 30].

For the GBD 2000 Study, disability weights rather than disease-specific HRQoL scores have been employed. The original disability weights for untreated and treated COPD in the GBD

1990 Study were 0.428 and 0.388, respectively [1]. Recent national burden of disease studies in Australia and the USA used an aggregated disability weight based on the Dutch disability weight exercise in which mild/moderate and severe COPD were assigned the weights of 0.17 and 0.53, respectively.

For the GBD 2000 Study, it was decided that disability weights from these national burden of disease studies should be employed. For the purpose of comparison, YLDs based on current incidence estimates and the GBD 1990 Study disability weights were also calculated.

It has been suggested that treatment can improve the quality of life among COPD patients, but only smoking cessation can alter prognosis and progression [10, 31]. Hence, the majority of current treatments for COPD are conservative, but some improvement in the HRQoL score has been observed (for example, for a bronchodilator [32], for lung rehabilitation [33, 34], for treatment guidelines [35], for lung volume-reduction surgery [36]). Changes in a generic HRQoL instrument (*i.e.* the Short Form-36) score ranged from 14% (rehabilitation) to 22% (volume-reduction surgery). Hence, for the assessment of the treatment effect, a conservative 14% reduction in the disability weight as a treatment effect was employed, which is slightly larger than that used in the GBD 1990 Study.

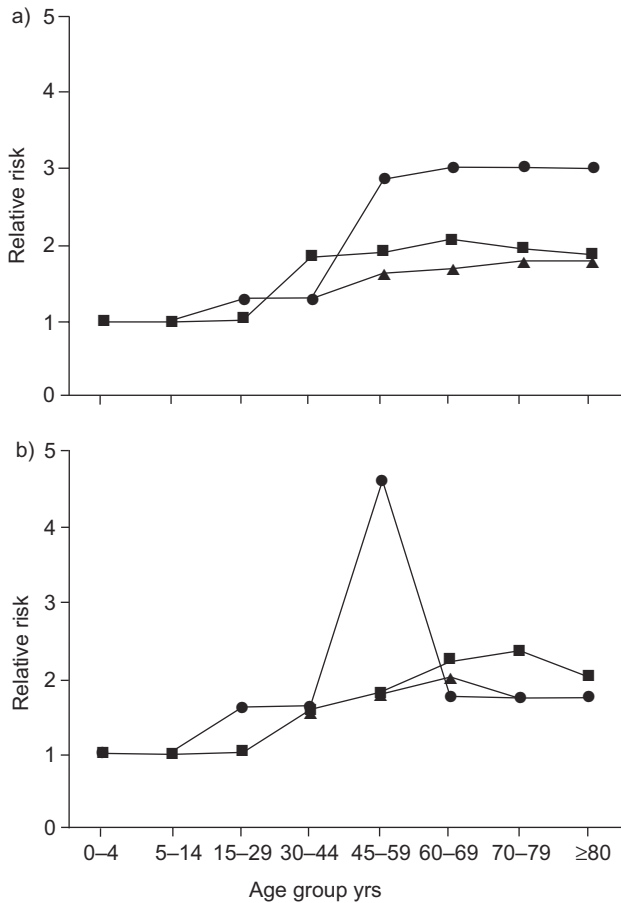
#### Results

The final regression model (equation 6) achieved a considerably high goodness of fit, with no systematic deviation among residuals. The coefficients for smoking (*i.e.* SIR) and biofuel use were both positive (1.111 and 2.108, respectively) and highly significant. As expected, the coefficients describing the effect of age on COPD mortality rose monotonically with age (1.664, 3.694, 5.662, 6.922, 8.068 for the age groups 30–44, 45–59, 60–69, 70–79 and  $\geq 80$  yrs, respectively). Overall, the model accounted for much of the variation in estimated COPD mortality among regions, with an  $R^2=0.942$ .

Predicted mortality was consistent with the GBD 2000 mortality estimates, except for males in South-East Asia (SEAR) with high child and adult mortality (D) where the GBD 2000 Study estimates were lower than predicted. This may well be due to problems with the regional cause of death template, and more confidence should be placed in the model-based predictions.

This model was used to estimate age- and sex-specific RRs of COPD-related mortality by region. For the purpose of comparison, the RRs used in the GBD 1990 Study, current model estimates, and the recent USA national burden of disease study (unpublished data) are shown in figure 2. The patterns of age- and sex-specific RRs are consistent among studies except for the GBD 1990 estimates, which highlight the limitations of the constant survival values approach used in that study.

Figure 3 shows estimated age-specific incidence and prevalence per 100,000, by broad regions in 2000, using these methods. Incidence rates rise with age, as expected, and are higher for males than females in all regions. By far the highest incidence is estimated for the Western Pacific (WPR) low child and adult mortality (B) region (primarily China) with rates at age  $\geq 60$  yrs of 2–3 times those of other regions. Age-specific



**FIGURE 2.** Comparison of relative risks of chronic obstructive pulmonary disease-related mortality by age and sex for a) males and b) females. ▲: USA burden of disease study; ●: Global Burden of Disease Study; ■: model estimates.

prevalence of the disease is also highest in WPR B in most cases, but, interestingly, is also high in Latin America (AMR) B and D, and A regions. Prevalence rates in these regions are 3–4 times those for other parts of the world.

Table 3 shows the summary estimates of adult (aged ≥30 yrs) prevalence of COPD, by region, for 2000. Table 3 also provides a comparison of prevalence estimates from the 1990 GBD Study, with the range of published (as of 2002) estimates in the literature. In general, the current (*i.e.* 2000) model estimates were more consistent with the results of the published literature than the 1990 estimates. In particular, the previous estimates highly underestimated COPD prevalence in AMR A, Europe (EUR) A and WPR A (*i.e.* the industrialised countries), where the prevalence of smoking was higher than in other regions. Conversely, the current estimates yielded lower prevalence rates in Africa (AFR).

Based on the estimated age-specific mortality, and the incidence/duration and severity weights from these methods, disease burden from COPD was calculated by region for 2000. These estimates are shown in table 4.

Overall, COPD was estimated to have caused >26 million DALYs in 2000, or just <2% of the global total. Of this, WPR B

(including China) and SEAR D (including India) accounted for 36% and 25%, respectively. Despite a lower prevalence in these regions than in other regions where risk factors are more prevalent, the large population in both regions contributed to the larger total morbidity from COPD. They were followed by smoking-prevalent regions, such as EUR A (6.7%) and AMR A (6.0%). The male/female ratios of total YLDs and YLLs were 1.4 and 1.1, respectively. The ratios tended to be higher in AFR, EMR and WPR B regions where smoking prevalence among females is still low. Overall, YLDs accounted for 38% of the total COPD burden, but YLDs exceeded YLLs in some mortality subregions (A and B).

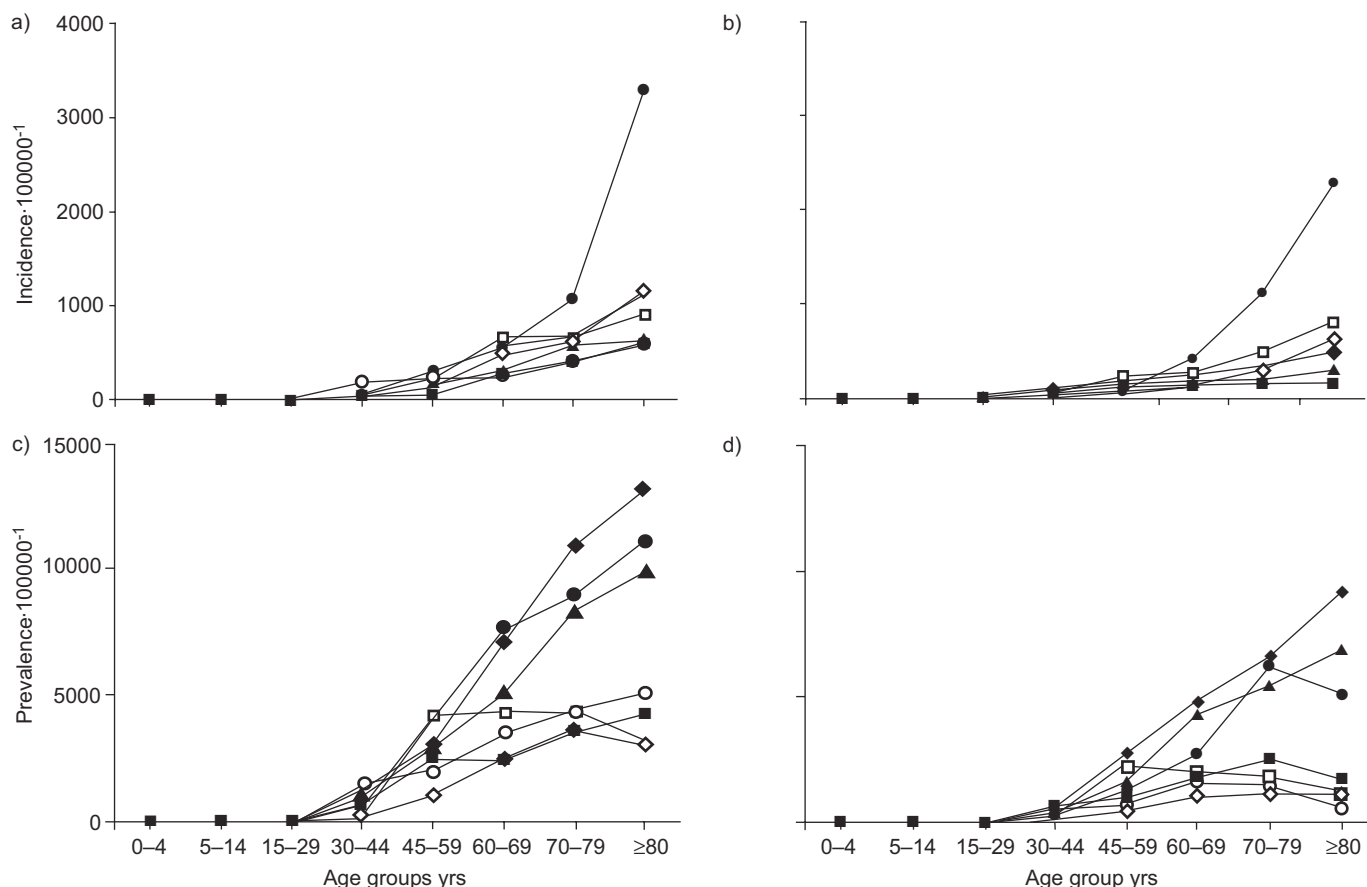
Figure 4 shows a comparison of YLDs per 100,000 population by region in GBD 1990 and GBD 2000. Total burden of COPD was larger in the GBD 1990 estimate than the present estimate partly because GBD 1990 tended to overestimate COPD incidence in regions such as AFR and WPR B, and partly because GBD 1990 employed higher severity weights across the regions. It should be noted, however, that actual epidemiological parameters such as mortality and prevalence rates increased considerably in 2000.

**Discussion and conclusions**

In the current paper, an alternative approach to estimating COPD incidence and prevalence has been described, which was used for estimating YLDs due to COPD in 2000. Compared with the previous estimates in GBD 1990, which employed uniform RRs across the regions, the revised method has the advantage of including regional variations in RRs of COPD-related mortality [1]. However, several limitations should be noted.

First, estimated RRs are not the true RRs of COPD-related mortality; rather they are approximated by the two major risk factors for COPD, *i.e.* RRs of joint effects of smoking and air pollution. Conversely, since the goodness of fit of the regression model was high (0.942), COPD-related mortality would be well represented by the risk factor analysis. Estimated prevalence rates were comparable to those published in the literature, ensuring the validity of the present approach. However, it is likely that the current GBD Study underestimates the true prevalence of COPD. At the time of analysis (2002), <30 studies of COPD prevalence were available to prepare regional estimates. More recent reviews [37, 38] have identified newer published studies from which updated prevalence estimates can be made. These data will be taken into account in any subsequent revision of the GBD Study.

Secondly, COPD mortality estimated for GBD 2000 may be still be an underestimate. A recent study in Canada by LACASSE *et al.* [33] has suggested that COPD mortality was much lower than that estimated by MANNINO *et al.* [5] from the USA multiple causes of death data. In fact, the study by MANNINO *et al.* [5] suggested that mortality from COPD was highly underestimated when using vital statistics rather than multiple causes of death data. However, if asthma was excluded as a cause of COPD death and cause of death was restricted to the primary cause, actual mortality figures in Canada and the USA were comparable, since COPD often coexists with lung cancer and COPD may often be the secondary cause of death rather



**FIGURE 3.** Estimated age-specific incidence for a) males and b) females, and age-specific prevalence for c) males and d) females of chronic obstructive pulmonary disease (COPD) by region, 2000. ▲: industrialised regions with very low child and adult mortality; ◆: Americas, combining the regions with low child and adult mortality, and high child and adult mortality; ■: Europe, combining the regions with low child and adult mortality, and low child mortality and high adult mortality; ○: Eastern Mediterranean; □: South-East Asia; ●: Western Pacific regions with low child and adult mortality; ◇: Africa.

than the primary cause [13]. Therefore, if the data on cause of death is restricted to the primary cause classified by ICD 9th or 10th revision as in the GBD exercise, COPD mortality is at least comparable across the regions. The possibility of the miscoding in COPD is still likely to be smaller than other causes of death. Nevertheless, the current estimate of COPD burden should be considered as a lower bound of true COPD burden.

Thirdly, another problem of underestimated mortality would be overestimation of prevalence, particularly in SEAR D and EUR B. Since a patient with a disease is selectively being removed from the population, its prevalence is lower than it would have been if the disease ran no excess mortality risk [16].

Finally, the main results from this study are estimates of COPD prevalence rates, which are consistent with a corresponding set of prevalence and mortality rates and, more importantly, appear to be more comparable with those in national burden of disease studies and the published literature than the previous (1990) estimates. Despite the uncertainty in estimates due to data limitations, the GBD Study suggests that COPD is a major cause of death and disability in all regions. More than 2.5 million people die of the disease each year, or about the same number as HIV/AIDS, and most of these deaths are in poor countries. COPD is currently the 10th leading cause of disease

burden (DALYs) in the world, causing ~2% of the entire global burden of disease, and this can be expected to rise unless urgent action is taken to control leading risk factors, particularly tobacco.

## PROJECTING THE FUTURE BURDEN OF COPD

### Summary

Methods to project future burden of disease include risk factor models and extrapolation of past trends. Risk factor models are intuitively appealing, but complex to construct and require detailed information on risk factors. Age-period-cohort extrapolation methods are appropriate for COPD as demographic changes, lifetime smoking habits (cohort effects) and other factors may strongly influence future COPD risk. Data (especially mortality) are often readily available and extrapolation methods are simple to implement, but can be difficult to interpret and are probably best for short-term projections.

To illustrate some of the issues with projecting burden of disease, a Bayesian age-period-cohort method was used to project COPD mortality for 2000–2009 in England and Wales (UK), using routinely available mortality and population data for 1945–1999.



**TABLE 3** Comparison of chronic obstructive pulmonary disease prevalence for those aged ≥30 yrs by region, 1990 and 2000

Region	Current 2000 estimates %		Estimates based on GBD 1990 data %		Published prevalence based on spirometry %	
	Males	Females	Males	Females	Males	Females
AFR D	1.1	0.5	2.4	1.4	<1.0	
AFR E	0.6	0.2	2.1	1.3		
AMR A	4.0	3.2	1.4	0.7	3.0–5.0	2.0–4.0
AMR B	3.4	2.5	1.5	0.8	2.0–4.0	
AMR D	0.7	0.3	1.4	0.7		
EMR B	2.3	0.5	0.9	0.9	1.0–2.0	1.0
EMR D	1.8	1.0	0.9	0.9		
EUR A	3.1	2.2	1.7	0.9	3.0–7.0	2.0–6.0
EUR B	1.7	1.2	1.7	0.9	3.0–8.0	2.0–5.0
EUR C	2.0	1.5	*	*		
SEAR B	1.6	0.9	1.2	0.6		
SEAR D	2.5	1.4	1.7	1.3	<2.0	<1.0
WPR A	2.9	2.0	1.9	1.0	2.0–4.0	2.0–3.0
WPR B	2.8 <sup>#</sup>	1.5 <sup>#</sup>	4.8 <sup>#</sup>	4.5 <sup>#</sup>	>3.0 <sup>#</sup>	<3.0 <sup>#</sup>

GBD: Global Burden of Disease Study; A: very low child and adult mortality; B: low child and adult mortality; C: low child mortality and high adult mortality; D: high child and adult mortality; E: high child mortality and very high adult mortality; AFR: Africa; AMR: Americas; EMR: Eastern Mediterranean; EUR: Europe; SEAR: South-East Asia; WPR: Western Pacific. <sup>#</sup>: aged ≥15 yrs; \* : included with EUR B.

**TABLE 4** Estimates of yrs lived with disability (YLDs), yrs of life lost (YLLs) and disability-adjusted life yrs (DALYs) due to chronic obstructive pulmonary disease by region, 2000

	YLD·100000 males <sup>-1</sup>	YLD·100000 females <sup>-1</sup>	YLL·100000 males <sup>-1</sup>	YLL·100000 females <sup>-1</sup>	Total YLD thousands	Total YLL thousands	Total DALYs thousands
AFR D	49.8	11.2	152.9	136.1	102	482	584
AFR E	47.1	11.5	167.5	131.9	99	505	603
AMR A	340.7	270.3	216.7	202.2	944	648	1592
AMR B	179.0	209.5	134.5	92.9	860	502	1362
AMR D	159.4	95.4	73.6	90.2	91	58	149
EMR B	283.6	57.4	60.2	44.1	244	73	317
EMR D	123.1	58.6	105.9	100.3	126	142	268
EUR A	265.0	298.9	198.6	104.7	1160	619	1779
EUR B	140.9	175.3	40.9	27.8	343	74	418
EUR C	197.2	265.6	390.4	132.3	574	622	1196
SEAR B	209.8	171.3	185.4	118.6	752	600	1351
SEAR D	123.3	123.0	397.3	353.7	1660	5073	6733
WPR A	113.5	92.5	77.9	34.1	154	83	237
WPR B	236.2	95.4	407.8	493.8	2524	6777	9628
<b>Total</b>	<b>188.9</b>	<b>140.1</b>	<b>286.2</b>	<b>260.9</b>	<b>9954</b>	<b>16543</b>	<b>26497</b>

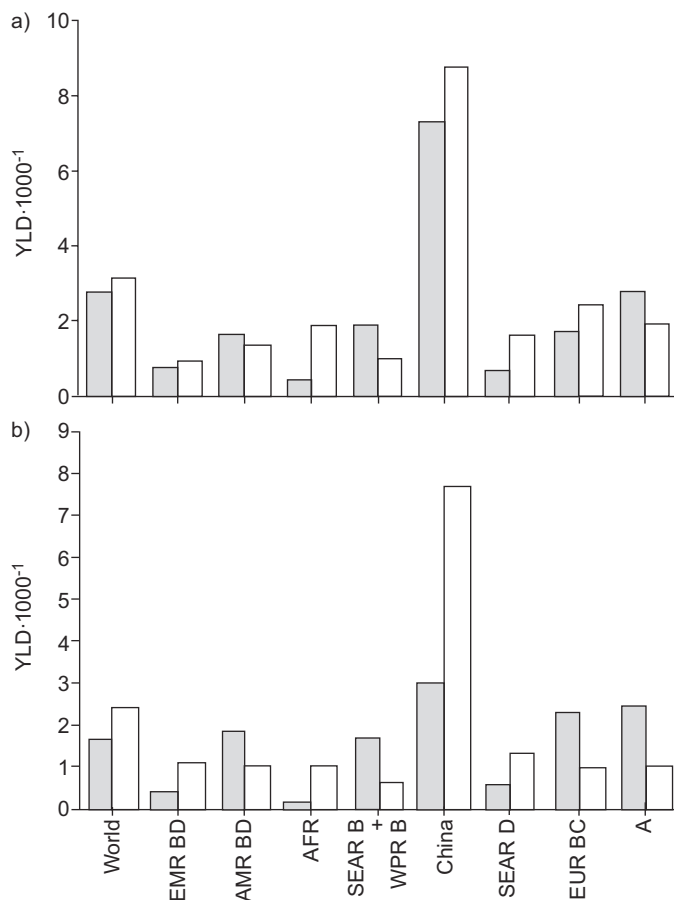
A: very low child and adult mortality; B: low child and adult mortality; C: low child mortality and high adult mortality; D: high child and adult mortality; E: high child mortality and very high adult mortality; AFR: Africa; AMR: Americas; EMR: Eastern Mediterranean; EUR: Europe; SEAR: South-East Asia; WPR: Western Pacific.

Testing the model by making predictions for the last 10 yrs of existing data gave median totals for COPD deaths within 9% for males and 5% for females. Projections for 2000–2009 suggested a median fall in death rates for males of 24% (90% credible intervals -52–14%) by 2009 on a 1999 baseline and corresponding 2% (90% credible intervals -40–65%) rise for females. The wide credible intervals reflect marked year-to-year variations in numbers of deaths, probably related to infectious disease activity.

Credible or confidence intervals are not routinely presented in current published COPD projections using risk factor models, but may give useful information. As no method is perfect, a more complete assessment would compare projections obtained using risk factor and extrapolation methods.

**Introduction**

In words attributed to Niels Bohr (1885–1962), “prediction is very difficult, especially about the future”. However, some



**FIGURE 4.** Comparison of yrs lived with disability (YLD) per 1,000 for a) males and b) females in Global Burden of Disease (GBD) Study 1990 (□) and GBD 2000 (■) estimates. This figure compares results for 2000, using subregions, with results for 1990, where a different categorisation of subregions was used. EMR BD: Eastern Mediterranean, combining low child and adult mortality, and high child and adult mortality; AMR BD: Americas, combining the regions with low child and adult mortality, and high child and adult mortality, which corresponds to the 1990 categorisation of Latin America and the Caribbean; AFR: Africa; SEAR B + WPR B: this category comprises some of the South-East Asia region with low child and adult mortality, and two-thirds of the Western Pacific region with low child and adult mortality, which allows comparison with the 2000 estimates; SEAR D: South-East Asia region with high child and adult mortality, which corresponds to India; EUR BC: Europe, combining low child and adult mortality, and low child mortality and high adult mortality; A: industrialised regions.

knowledge about expected future trends of a disease can be useful for many reasons, including planning of public-health initiatives and healthcare services. Two general approaches are in use to project future incidence or mortality trends: extrapolation based on previous trends and forecasts based on multivariate risk factor models [1]. Both methods assume some constancy of whatever they model on, either that the relationship of risk factors with disease stays the same over time or, in extrapolation, that past trends continue. This section considers the use of these methods to project the future burden of COPD, and subsequently illustrates some of the issues that may arise in making projections, using a Bayesian extrapolation method for mortality in England and Wales. While this method is readily transferable to other countries, results may

differ as smoking prevalence has been declining for several decades in the UK.

#### Risk factor methods

Arguably, the most well-known COPD projections come from the authoritative and widely quoted GBD Study, which projected that COPD would rise to the third leading cause of death worldwide in 2020 [1]. These projections arose from a risk factor model designed to guide international health policy. The model was deliberately simple to facilitate its use across a range of diseases and countries. Risk factors included in the model were projected income, education and smoking levels, and these were used to make projections for disease groupings for 2020 by world region, for baseline, optimistic and pessimistic scenarios [1]. The model provided a relatively poor fit ( $r^2$  coefficients typically  $\sim 30\%$  for most age and sex groupings), *i.e.* only 30% of the variation in the model could be explained by the risk factors included. Levels of specific respiratory diseases such as COPD at the country level were then inferred from that country's current distribution of specific conditions within respiratory disease. While the GBD model has been greatly influential in directing attention at respiratory disease internationally, other approaches are arguably better at producing projections at a country level where good risk factor and healthcare data exist.

One of the few risk factor models specific for COPD was published by FEENSTRA *et al.* [39] in 2001. This used a system-dynamic multistate life-table model to make 20-yr predictions about the COPD burden in the Netherlands. Main risk factors for COPD were age and detailed smoking data (survey data with age- and sex-specific starting and stopping smoking rates). RRs for developing COPD related to these risk factors were derived from cohort studies (chiefly from the USA). These were then applied to COPD incidence and prevalence data from a combination of general practice databases, national mortality and population data, and to information on healthcare usage and costs. This complex model provided detailed information on projected prevalence, DALYs, mortality and costs. As well as providing detailed information, informative sensitivity analyses can be conducted using risk factor models. For example, the basic model suggested an increase in COPD prevalence of 43% in males and 142% in females between 1995 and 2015 [39]. However, if all smokers quit in 1995 and nobody else started, COPD prevalence in 2015 was still projected to increase by around 40% in males and 129% in females, due to future ageing of the population and the legacy of previous smoking. There are some disadvantages of such models: 1) they are complex and can, therefore, be difficult to implement; 2) the complexity magnifies the possibility of combining errors and biases in the data; and 3) such models are not readily transferable to countries lacking comprehensive healthcare information.

#### Extrapolation methods

The alternative approach to risk factor models is to extrapolate from past trends. Extrapolation models can be readily used at the level of country and are often simpler to implement than risk factor models, although they may be complex to interpret. They are probably best suited to short-term projections because past trends are likely to become less relevant further into the future.

Extrapolation methods are mainly used with mortality data. This is because mortality data are readily available in many countries over a sufficient time period (25–30 yrs are advisable), with reasonably stable definitions of disease and coding over time and of acceptable quality. Simple extrapolations, such as those from a logistic regression model of mortality trends [40], are likely to give a misleading impression of future COPD trends as they do not take into account factors such as population age changes, year-to-year (period) influences such as influenza epidemics, and generational (cohort) influences such as lifetime smoking patterns that may all strongly influence future COPD mortality [41, 42]. Age–period–cohort models are more sophisticated extrapolation methods that take into account all of these factors and have been most widely used to make projections of cancer mortality [41–48].

#### Assessment of uncertainty in disease projections

Leaving aside the inherent problems of attempting to assess the future at all, variations in projected figures relate to the choice of model assumptions and also to statistical uncertainty in the model. While most published projections examine the impact of model assumptions through sensitivity analyses, very few published analyses report uncertainty intervals (confidence or credible intervals), although some authors refer to ways in which these may be calculated [1, 41]. The omission of uncertainty intervals may affect interpretation of the projections. The rest of this section illustrates this point in a demonstration of a recently developed Bayesian age–period–cohort model to make short-term mortality projections for COPD for England and Wales [49].

### Methods

#### Data

COPD and population data for England and Wales 1945–1999 by 5-yr age band were obtained from the Office for National Statistics (ONS) [50–54]. Codes used for COPD included those for asthma, chronic bronchitis and emphysema due to concerns about distinguishing between these conditions using death certificate data [55]; asthma constituted ~7% of deaths over this time period. Population projections for 2000–2009 onwards were obtained from the Government Actuarial Dept (London, UK). As changes in ICD coding over time can lead to artefactual changes in rates, age-specific conversion factors for COPD mortality covering change years were obtained from the ONS [56–60], except for the changes from the ICD8 to ICD9, which are not available.

#### Statistical analyses

Projections of numbers of deaths were conducted using a Bayesian age–period–cohort model implemented in a freeware programme called Bayesian Age–period–cohort Modelling and Prediction (BAMP) [49, 61]. Here, period effects represent factors affecting people of all ages at a particular point in time (*e.g.* treatment advances or influenza epidemics), while cohort effects represent factors more common in people born at a particular point in time (*e.g.* smoking habits).

#### Statistical model

The statistical method is described in more detail elsewhere [49]. In brief, the underlying assumption on which the

statistical model is based is that observed mortality rates result from a constant rate modified by age, period and cohort effects, plus unobserved covariates. The model is implemented in a Bayesian framework and is a development of work by CLAYTON and SCHIFFLERS [62] and BERZUINI *et al.* [63]. Differing assumptions (prior beliefs or priors) about the smoothness of the age, period and cohort parameters could be incorporated into the model. The smoothing prior defined as random walk (RW)1 favoured solution parameters with constancy of first-order differences of age, period or cohort parameters, thereby assuming a smoothness of age, period and cohort trends, whereas the RW2 prior penalised deviations from a linear trend of the second-order differences of age, period or cohort parameters, assuming a smoothness of the rate of change of parameters [49].

To select the best model with which to make projections, predictions of numbers of deaths were made for the last 10 yrs of existing data (1990–1999), where the actual numbers of deaths were already known. Predictions were based on analyses for 1950–1989 using RW1 or RW2 constraints and data sets adjusted or unadjusted for ICD coding changes. The combinations of data set and model that most closely predicted the numbers of deaths for the last 10 yrs of existing data, assessed by comparing the square root of the sum of median predictive deviances, were then used to project mortality from 2000 to 2009.

Within the Bayesian framework, information from both prior beliefs (priors) and the data are combined to give a posterior distribution, from which actual values for parameters can be derived though repeated iterative sampling. The first 2,000 samples representing “burn in” for the model were discarded, and quoted results are based on a further 100,000 samples. Median values and centiles specified at 5% and 95% and 25% and 75% were obtained.

### Results

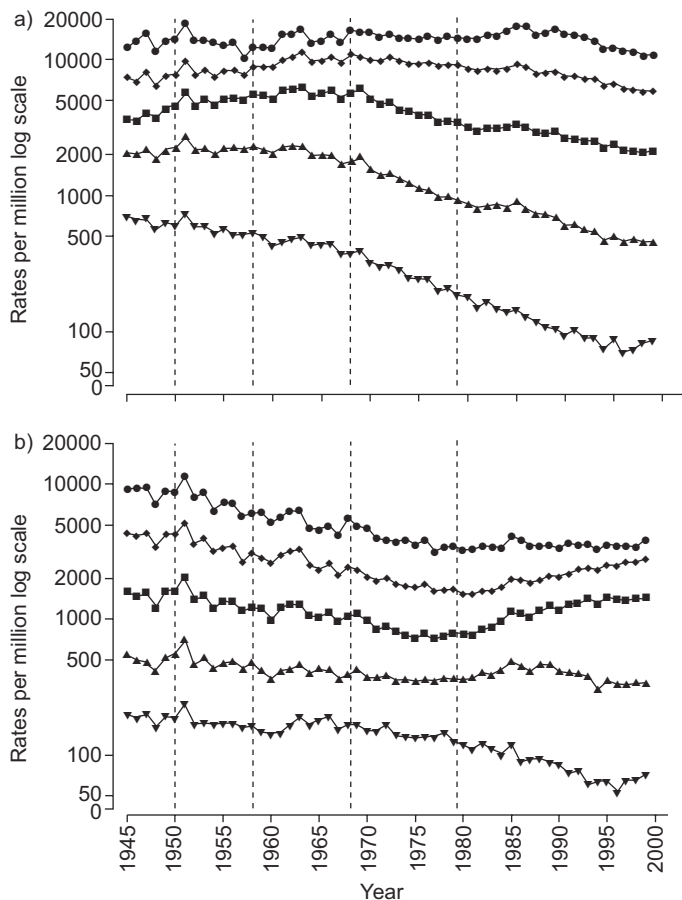
#### Descriptive analyses

Deaths from COPD in males and younger females have declined in England and Wales in recent years, with the decline starting at different periods in different age groups, but have been increasing in older females (fig. 5). The impact of coding changes was minimal, as artefactual changes in rates across change years were not visible. However, marked year-to-year variations were also visible in these graphs, and these were located as period effects in the age–period–cohort analyses.

#### Making predictions for existing data using age–period–cohort analyses

Posterior median predictions from all models overestimated the total number of deaths occurring in 1990–1999. In the best models, overestimation was ~9% for males and 5% for females (table 5). However, the actual numbers of deaths for each year and age group generally lay within the 5% and 95% centiles of the predictions. Using data adjusted for ICD changes gave slightly worse predictions in females but slightly better predictions in males (table 5).

Projections for 2000–2009 using age–period–cohort analyses Median projections are presented together with 90% credible intervals, which were obtained from the 5% and 95% centile



**FIGURE 5.** Chronic obstructive pulmonary disease mortality during the period of 1945–1999 in a) males and b) females aged  $\geq 45$  yrs in England and Wales (UK), unadjusted for International Classification of Disease (ICD) coding version changes (----: ICD change years).  $\nabla$ : aged 45–54 yrs;  $\blacktriangle$ : aged 55–64 yrs;  $\blacksquare$ : aged 65–74 yrs;  $\blacklozenge$ : aged 75–84 yrs;  $\bullet$ : aged  $\geq 85$  yrs.

estimates. The 90% credible intervals can be interpreted as intervals where there is 90% confidence that the “true” value lies within these bounds. Projections using the best models suggested that COPD death rates in males aged  $\geq 45$  yrs would continue the decline of recent decades, falling by 24% (90% credible interval -52–14%) by 2009 from a 1999 baseline (table 6). In females, projections suggested fluctuations in COPD death rates and wide credible intervals, with 2% higher rates in 2009 (90% credible interval -40–65%) than in 1999 (table 6). A fall in rates was strongly suggested for males aged in their 60s and 70s and females in their 60s (the 95th centiles for projected rates in 2009 were lower than in 1999), but, for other age groups, 90% credible intervals encompassed both a fall and rise in rates (fig. 6).

The corresponding posterior median projections of numbers of deaths (data not shown) showed an  $\sim 10\%$  fall in COPD male deaths and a rise (with minor year-to-year fluctuations) in female deaths of  $\sim 10\%$  from a 1999 baseline to  $\sim 14,000$  each per yr in 2009. The median number of deaths for females at 14,410 (90% credible interval 8,184–21,886) were projected to become higher than those for males at 14,259 (90% credible interval 8,824–21,145) for the first time by 2008, but credible

intervals showed wide overlap. Despite higher numbers of deaths, the posterior median rates in females were projected to remain lower than males throughout the period (table 6) due to demographic changes in the population.

### Interpretation

To the current authors’ knowledge, this is the first use of a Bayesian age–period–cohort method to make mortality projections for COPD. Median projections suggested that male COPD death rates in the UK would continue the decline seen in recent decades and fall by a quarter over the decade, whereas those in females were projected to remain fairly static. Perhaps the most striking feature of the projections was the wide credible intervals. It should also be noted that intervals quoted will underestimate the statistical uncertainty in the model because uncertainties about the population projections for 2000–2009 have not been incorporated. As previously noted, credible or confidence intervals are rarely presented in published projections.

The major factor responsible for the wide credible intervals for COPD mortality was the marked year-to-year variations in mortality rates (fig. 5) located as period effects. These period effects probably relate to variations in activity of respiratory infections, including respiratory syncytial virus and influenza. Similar methods used to project lung cancer mortality, which had much less year-to-year variation than COPD, resulted in much narrower credible intervals [64]. Wide credible intervals do not affect the median projections and are of interest in their own right. For example, although COPD mortality rates in males were likely to decrease overall, the results suggest that, given the experience in previous years, there could be marked year-to-year fluctuations in numbers of deaths. This information might be of particular use when planning services. Furthermore, the upper credible intervals could be interpreted as suggesting that there is a 95% certainty that COPD mortality rates in males in 2009 would only be 14% higher than in 1999, even if respiratory infection activity were high, whereas, in females, projections suggested they could be up to two-thirds higher than in 1999 with 95% certainty. This type of information would not have been available from the risk factor models employed by FEENSTRA *et al.* [39] or the GBD Study [1] as infectious disease activity was not included in the model and confidence intervals were not presented.

Another issue relates to the degree of certainty required for the projections. Many Bayesian studies use 70% or 80% credible intervals (which are lower than the 95% confidence interval levels used in frequentist analyses in recognition that certain prior knowledge about the data, as well as statistical uncertainty, are reflected in the results) and the 90% bounds presented here may be more stringent than required for planning purposes [65].

### Accounting for changes in smoking

A refinement of age–period–cohort analyses is to substitute one or more of the parameters by changes in a known risk factor with an appropriate lag, *e.g.* the impact of changes in average tar content in cigarettes on lung cancer mortality, which might be expected to exert a period effect (change in rates affecting all ages) [45]. This is less easy for COPD as, unlike cancers, the components of cigarette smoke leading to

**TABLE 5** Comparison of predictions with actual total number of chronic obstructive pulmonary disease (COPD) plus asthma deaths for 1990–1999 in England and Wales in those aged ≥45 yrs

Smoothing constraint	Data bridge-coded adjusted?	% difference of sum of posterior median predictions from actual total number of deaths	% of age-group categories where actual numbers lie within 25–75% centiles of predictions <sup>#</sup>	% of age-group categories where actual numbers lie within 5–95% centiles of predictions <sup>#</sup>	Square root of sum of posterior median predictive deviances
<b>COPD males</b>					
RW1	No	+10.8	62.2	93.3	36.39
RW1	Yes	+9.0	57.8	94.4	35.10
RW2	No	+76.9	91.1	100.0	217.77
RW2	Yes	+50.0	91.1	100.0	194.21
<b>COPD females</b>					
RW1	No	+4.9	80.0	93.3	34.96
RW1	Yes	+5.6	80.0	93.3	36.01
RW2	No	+72.6	96.7	100	238.55
RW2	Yes	+69.7	96.7	100	244.52

RW: random walk smoothing constraint. #: represents 90 cells, nine age-group categories over 10 yrs.

**TABLE 6** Projected posterior chronic obstructive pulmonary disease (COPD) mortality rates per 100,000 population and numbers of COPD deaths for 2000–2009 in England and Wales, for those aged ≥45 yrs and actual rates/numbers for 1999

Year <sup>#</sup>	COPD mortality rates		Numbers of COPD deaths	
	Males median (90% CI)	Females median (95% CI)	Males median (95% CI)	Females median (90% CI)
<b>1999</b>	165.1	113.0	15583	12438
<b>2000</b>	164.5 (143.4–187.9)	119.8 (98.3–146.8)	15847 (13814–18095)	13269 (10885–16260)
<b>2001</b>	160.7 (129.0–193.2)	120.1 (94.9–154.7)	15655 (12567–18820)	13395 (10586–17253)
<b>2002</b>	156.5 (122.6–197.1)	121.9 (90.6–161.1)	15427 (12081–19430)	13678 (10174–18080)
<b>2003</b>	152.3 (112.3–200.0)	119.8 (80.7–178.9)	15204 (11213–19967)	13547 (9130–20231)
<b>2004</b>	147.1 (103.3–198.2)	118.3 (77.7–179.9)	14886 (10458–20060)	13498 (8864–20524)
<b>2005</b>	142.2 (99.7–200.8)	119.4 (76.0–186.0)	14607 (10246–20636)	13750 (8744–21406)
<b>2006</b>	138.1 (93.0–195.2)	117.8 (71.7–187.4)	14429 (9718–20390)	13706 (8347–21802)
<b>2007</b>	134.6 (86.8–189.9)	121.2 (74.2–188.1)	14315 (9227–20193)	14267 (8732–22148)
<b>2008</b>	131.7 (81.5–195.2)	120.8 (68.6–183.5)	14259 (8824–21145)	14410 (8184–21886)
<b>2009</b>	126.3 (79.3–188.7)	115.7 (67.7–186.6)	13944 (8758–20832)	13985 (8184–22559)

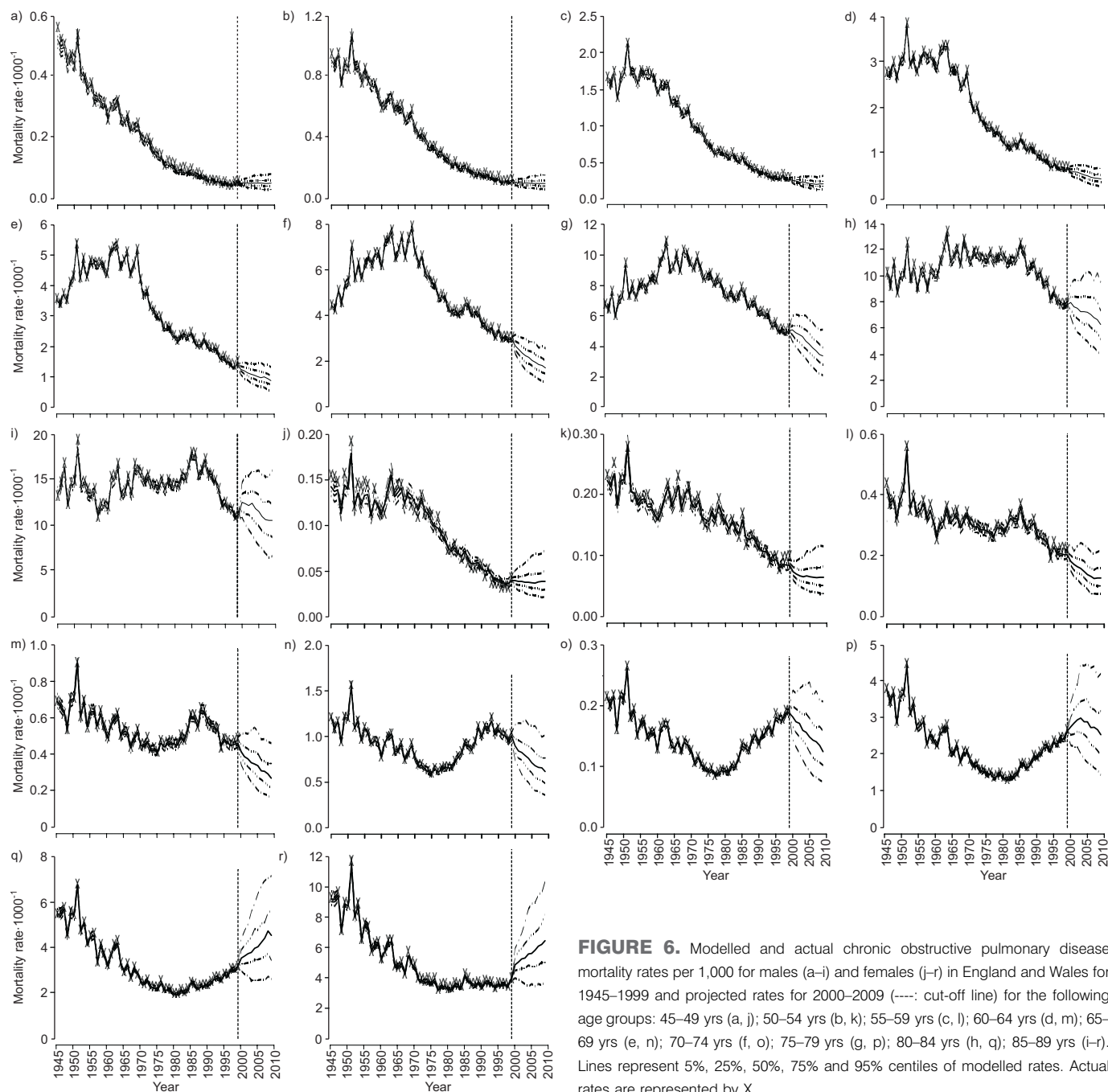
CI: credible interval. #: the data for 1999 are actual rates/numbers, and the remaining years are projected.

disease development have not been definitively characterised [66]. Repeating the analyses presented here using annual tobacco consumption by sex lagged 20 or 40 yrs, as the period effect did not improve predictions and resulted in an unrealistic widening of credible intervals, particularly in females [67]. This seemingly unintuitive result can be explained using the knowledge that, in the UK, there are known strong year of birth (cohort) effects in smoking behaviour with males first taking up smoking in large numbers around the time of the First World War and females doing so in the 1940s. The current authors' interpretation is that cumulative smoking exposure is the most important predictor of COPD mortality trends, and this is already captured by the cohort effect. Therefore, any impact of year-to-year changes in smoking habits, which would be reflected in the period effect, adds little explanatory information to the model [42, 56].

Another possible explanation is that the measure used was too crude an indicator of tobacco use. Substituting the cohort parameter with a suitable smoking covariate is unlikely to improve predictions over a short time period because the data will hold very good information about cohort trends for the oldest cohorts with the largest numbers of deaths. Cohort smoking information may be able to improve predictions in younger cohorts in the short term, but these constitute the smallest number of deaths [41]. It could potentially improve predictions over a longer time period, assuming smoking remains a major influence on COPD mortality.

Data

Mortality data in the UK are of high quality, represent almost 100% of deaths and are usually certified by a medical practitioner or coroner [68]. Changes in diagnostic patterns



**FIGURE 6.** Modelled and actual chronic obstructive pulmonary disease mortality rates per 1,000 for males (a–i) and females (j–r) in England and Wales for 1945–1999 and projected rates for 2000–2009 (----: cut-off line) for the following age groups: 45–49 yrs (a, j); 50–54 yrs (b, k); 55–59 yrs (c, l); 60–64 yrs (d, m); 65–69 yrs (e, n); 70–74 yrs (f, o); 75–79 yrs (g, p); 80–84 yrs (h, q); 85–89 yrs (i–r). Lines represent 5%, 25%, 50%, 75% and 95% centiles of modelled rates. Actual rates are represented by X.

are inevitable over a 50-yr period, but the present authors consider that data were compatible over this time period. Both COPD and lung cancer have distinctive clinical and radiographic features, and the ICD codes used to define COPD were deliberately broad to allow for changes in diagnosis over time. The analysis was restricted to those aged  $\geq 45$  yrs as most of the deaths from obstructive lung disease occur in older individuals. Including younger age groups would have been possible, but this would have reduced precision and widened credible intervals [69]. There was no advantage to using data adjusted with factors derived from bridge-coding exercises in this analysis because changes to numbers of deaths resulting from coding revisions were small.

A separate issue concerns the usefulness of mortality as an estimate of the public health burden of obstructive lung disease. Some advantages are that mortality and population data are readily available in many countries, information on the quality of the data is available, and this type of analysis is relatively cheap and straightforward. However, it is likely to underestimate the burden of disease. This analysis used COPD statistics relating to underlying cause of death on the death certificate, but, in England and Wales, this only accounts for  $\sim 60\%$  of individuals with the disease mentioned anywhere on the death certificate [70]. The Tucson cohort study suggested that only 33% of patients with COPD in life had COPD listed anywhere on the death certificate, although

this percentage increased to 77% in subjects with moderate-to-severe disease [71].

In conclusion, predicting future trends in a disease is difficult. Both risk factor and age–period–cohort approaches are based on a number of assumptions; for example, that the dose–response coefficient of the risk factor will remain constant into the future or that current age, period and cohort trends will continue. The extent to which projection methods can predict existing data should be readily available for published projections. As all methods have flaws, a more complete assessment can be made by comparing projections obtained using risk factor and extrapolation methods.

#### ACKNOWLEDGEMENTS

The authors would like to thank all attendees for their active participation in the workshop: R. Beasley, A.S. Buist, K.R. Chapman, Y. Fukuchi, D. Gorecka, A. Gulsvik, A. Hansell, S. Hurd, C. Lai, T. Lee, A. Lopez, D. Mannino, D. Mapel, A. Menezes, M. Miravittles, D. Sin, S. Sullivan, M. Thun, P. Vermeire, J. Vestbo, G. Viegi, W. Vollmer, G. Watt, J. Hogg, W.C. Tan, S. Ferris-O'Donnell, R. Jagt, K. Knobil, T. Leonard, H. Muellerova, G. Nadeau, M. Sayers, J. Soriano, M. Spencer and R. Stanford.

They would also like to thank K. Poinsett-Holmes for editorial assistance and G. Morley for logistics support. Finally, contributions by the following are acknowledged: G. Marks, N. Pride, P. Aylin and N. Best for their collaboration with A. Hansell in the "Projecting the future burden of COPD" section of the manuscript.

This is the second of four manuscripts presenting the proceedings of a scientific workshop entitled The Global Burden of COPD, held in Vancouver, Canada, October 21–22, 2004, which will appear in consecutive issues of the *European Respiratory Journal*. A question and answer document file following each of the manuscripts presented during the workshop is available at [www.ersnet.org/elearning](http://www.ersnet.org/elearning)

#### REFERENCES

- Murray CJ, Lopez AD. The Global Burden of Disease. Boston, Harvard School of Public Health, Harvard University Press, 1996.
- DisMod version 1.0. Release note. Global Programme on Evidence for Health Policy. Geneva, World Health Organization, 2001.
- Murray CJ, Lopez AD, Mathers CD, Stein C. The Global Burden of Disease 2000 Project: aims, methods, and data sources. Global Programme on Evidence for Health Policy, Discussion paper #36. Geneva, World Health Organization, 2001.
- Mathers C, Fat DM, Inoue M, Rao C, Lopez AD. Counting the dead and what they died of: an assessment of the global status of cause of death data. *Bull World Health Organ* 2005; 83: 171–177.
- Mannino DM, Brown C, Giovino GA. Obstructive lung disease deaths in the United States from 1979 through 1993. An analysis using multiple-cause mortality data. *Am J Respir Crit Care Med* 1997; 156: 814–818.
- Salomon JA, Murray CJL. The epidemiological transition revisited: compositional models for causes of death by age and sex. *Popul Dev Rev* 2002; 28: 205–228.
- World Health Organization. World Health Report, 2004: Changing History. Geneva, World Health Organization, 2004.
- Yang G, Jianping H, Kequin R, Ma J, Rao C, Lopez AD. Mortality registration and surveillance in China: history, current situation and challenges. *Popul Health Metr* 2005; 3: 3.
- Chen JC, Mannino DM. Worldwide epidemiology of chronic obstructive pulmonary disease. *Curr Opin Pulm Med* 1999; 5: 93–99.
- Barnes PJ. Chronic obstructive pulmonary disease. *N Engl J Med* 2000; 343: 269–280.
- Hurd S. The impact of COPD on lung health worldwide. *Chest* 2000; 117: Suppl. 2, 1S–4S.
- Pauwels RA, Buist AS, Calverley PM, Jenkins CR, Hurd SS, GOLD Scientific Committee. Global strategy for the diagnosis, management, and prevention of chronic obstructive pulmonary disease. NHLBI/WHO Global Initiative for Chronic Obstructive Lung Disease (GOLD) workshop summary. *Am J Respir Crit Care Med* 2001; 163: 1256–1276.
- Petty TL. Definitions, causes, and prognosis of chronic obstructive pulmonary disease. *Respir Care Clin N Am* 1998; 4: 345–358.
- Rennard SI. COPD: overview of definitions, epidemiology, and factors influencing its development. *Chest* 1998; 113, Suppl. 4, 235S–241S.
- Mannino DM, Gagnon RC, Petty TL, Lydick E. Obstructive lung disease and low lung function in adults in the United States. *Arch Intern Med* 2000; 160: 1683–1689.
- Barendregt JJ, Baan CA, Bonneux L. An indirect estimate of the incidence of non-insulin-dependent diabetes mellitus. *Epidemiology* 2000; 11: 274–279.
- Anthonisen NR, Wright EC, Hodgkin JE. Prognosis in chronic obstructive pulmonary disease. *Am Rev Respir Dis* 1986; 33: 14–20.
- Burrows B, Bloom JW, Trayer GA, Cline MG. The course and prognosis of different forms of chronic airway obstruction in a sample from the general population. *N Engl J Med* 1987; 317: 1309–1314.
- Hodgkin JE. Prognosis in chronic obstructive pulmonary disease. *Clin Chest Med* 1990; 1: 555–569.
- Sherrill DL, Lebowitz MD, Burrows B. Epidemiology of chronic obstructive pulmonary disease. *Clin Chest Med* 1990; 11: 375–387.
- Peto R, Lopez AD, Boreham J, Thun M, Heath C Jr. Mortality from tobacco in developed countries: indirect estimation from national vital statistics. *Lancet* 1992; 339: 1268–1278.
- Behera D, Jindal SK. Respiratory symptoms in Indian women using domestic cooking fuels. *Chest* 1991; 100: 385–388.
- Dennis RJ, Maldonado D, Norman S, et al. Wood smoke exposure and risk for obstructive airways disease among women. *Chest* 1996; 109: Suppl. 3, 55S–56S.
- Saldiva PH, Pope CA 3rd, Schwartz J, et al. Air pollution and mortality in elderly people: a time-series study in Sao Paulo, Brazil. *Arch Environ Health* 1995; 5: 159–163.

- 25 Ezzati M, Lopez AD, Rodgers A, Murray CJL. Comparative quantification of health risks: global and regional burden of disease attributable to selected major risk factors. Geneva, World Health Organization, 2004.
- 26 Hnizdo E. Health risks among white South African goldminers: dust, smoking, and chronic obstructive pulmonary disease. *S Afr Med J* 1992; 81: 512–517.
- 27 Pandey MR. Prevalence of chronic bronchitis in a rural community of the hill region of Nepal. *Thorax* 1984; 39: 337–339.
- 28 Mahler DA. How should health-related quality of life be assessed in patients with COPD? *Chest* 2000; 117: Suppl. 2, 54S–57S.
- 29 Fletcher C, Peto R. The natural history of chronic airflow obstruction. *BMJ* 1977; 1: 1645–1648.
- 30 Wise RA. Changing smoking patterns and mortality from chronic obstructive pulmonary disease. *Prev Med* 1997; 26: 418–421.
- 31 Anthonisen NR, Connett JE, Kiley JP, et al. Effects of smoking intervention and the use of an inhaled anticholinergic bronchodilator on the rate of decline of FEV1. The Lung Health Study. *JAMA* 1994; 272: 1497–1505.
- 32 Jones PW, Bosh TK. Quality of life changes in COPD patients treated with salmeterol. *Am J Respir Crit Care Med* 1997; 155: 1283–1289.
- 33 Lacasse Y, Wong E, Guyatt GH, King D, Cook DJ, Goldstein RS. Meta-analysis of respiratory rehabilitation in chronic obstructive pulmonary disease. *Lancet* 1996; 348: 1115–1119.
- 34 Finnerty JP, Keeping I, Bullough I, Jones J. The effectiveness of outpatient pulmonary rehabilitation in chronic lung disease. A randomised trial. *Chest* 2001; 119: 1705–1710.
- 35 Jans MP, Schellevis FG, Le Coq EM, Bezemer PD, van Eijk JTM. Health outcomes of asthma and COPD patients: the evaluation of a project to implement guidelines in general practice. *Int J Qual Health Care* 2000; 13: 17–25.
- 36 Geddes D, Davies M, Koyama H, et al. Effect of lung-volume-reduction surgery in patients with severe emphysema. *N Engl J Med* 2000; 343: 239–245.
- 37 Halbert RJ, Isonaka S, George D, Iqbal A. Interpreting COPD prevalence estimates: what is the true burden of disease? *Chest* 2003; 123: 1684–1692.
- 38 Tan WC, Seale JP, members of the Regional COPD Working Group. COPD prevalence in 12 Asia-Pacific countries and regions: projections based on the COPD prevalence estimation model. *Respirology* 2003; 8: 192–198.
- 39 Feenstra TL, van Genugten ML, Hoogenveen RT, Wouters EF, Rutten-van Molken MP. The impact of aging and smoking on the future burden of chronic obstructive pulmonary disease: a model analysis in the Netherlands. *Am J Respir Crit Care Med* 2001; 164: 590–596.
- 40 Miller N, Simoes EJ, Chang JC, Robling AG. Trends in chronic obstructive pulmonary disease mortality. *Mo Med* 2000; 97: 87–90.
- 41 Osmond C. Using age, period and cohort models to estimate future mortality rates. *Int J Epidemiol* 1985; 14: 124–129.
- 42 Lee PN, Fry JS, Forey BA. Trends in lung cancer, chronic obstructive lung disease and emphysema death rates for England and Wales 1941–85 and their relation to trends in cigarette smoking. *Thorax* 1990; 45: 657–665.
- 43 Osmond C, Gardner MJ. Age, period and cohort models applied to cancer mortality rates. *Stat Med* 1982; 1: 245–259.
- 44 Osmond C, Barker DJP. Ischaemic heart disease in England and Wales around the year 2000. *J Epidemiol Community Health* 1991; 45: 71–72.
- 45 Brown CC, Kessler LG. Projections of lung cancer mortality in the United States: 1985–2025. *J Natl Cancer Inst* 2004; 80: 43–51.
- 46 Bray I, Brennan P, Boffetta P. Projections of alcohol- and tobacco-related cancer mortality in central Europe. *Int J Cancer* 2000; 87: 122–128.
- 47 Bray I, Brennan P, Boffetta P. Recent trends and future projections of lymphoid neoplasms: a Bayesian age-period-cohort analysis. *Cancer Causes Control* 2001; 12: 813–820.
- 48 Bray I, Brennan P. Recent trends and future directions for lung cancer mortality. *Br J Cancer* 2002; 87: 43–48.
- 49 Knorr-Held L, Rainer E. Prognosis of lung cancer mortality in West Germany: a case study in Bayesian prediction. *Biostatistics* 2001; 2: 109–129.
- 50 Office for National Statistics. Twentieth Century Mortality CD-ROM (Crown Copyright). London, Office for National Statistics, 1997.
- 51 Office for National Statistics. Office for National Statistics Twentieth Century Mortality Files 1996 Update Disk. London, Office for National Statistics, 1998.
- 52 Office for National Statistics. Mortality statistics, cause. Review of the Registrar General on deaths by cause, sex and age, in England and Wales, 1997. 24 Edn. London, The Stationery Office, 1998.
- 53 Office for National Statistics. Mortality statistics, cause. Review of the Registrar General on deaths by cause, sex and age, in England and Wales, 1998. 25th Edn. London, The Stationery Office, 1999.
- 54 Office for National Statistics. Mortality statistics, cause. Review of the Registrar General on deaths by cause, sex and age, in England and Wales, 1999. 26th Edn. London, The Stationery Office, 2000.
- 55 Smyth ET, Wright SC, Evans AE, Sinnamon DG, MacMahon J. Death from airways obstruction: accuracy of certification in Northern Ireland. *Thorax* 1996; 51: 293–297.
- 56 Marks G, Burney P. Diseases of the respiratory system. In: Charlton J, Murphy M, eds. The health of adult Britain 1841–1994. London, The Stationery Office, 1997; pp. 93–113.
- 57 The Registrar General's Statistical Review of England & Wales for the year 1957. Part III, commentary. London, Her Majesty's Stationery Office, 1959.
- 58 The Registrar General's Statistical Review of England & Wales for the year 1957. Part I, Tables, Medical. London, Her Majesty's Stationery Office, 1959.
- 59 The Registrar General's Statistical Review of England & Wales for the year 1967. Part I. Tables, Medical. London, Her Majesty's Stationery Office, 1969.
- 60 The Registrar General's Statistical Review of England & Wales for the year 1967. Part III, commentary. London, Her Majesty's Stationery Office, 1971.



- 61** Bayesian Age-Period-Cohort Modelling and Prediction (BAMP; version 1.3.0; December 14, 2004). Ludwig-Maximilians-Universität, Munich, German, 2002. [www.statistik.lmu.de/sfb386/software/bamp/bamp/](http://www.statistik.lmu.de/sfb386/software/bamp/bamp/). Date last accessed: December 22 2005.
- 62** Clayton D, Schifflers E. Models for temporal variation in cancer rates. II: Age-period-cohort models. *Stat Med* 1987; 6: 469–481.
- 63** Berzuini C, Clayton D, Bernardinelli L. Bayesian inference on the lexis diagram. *Bull Int Stat Inst* 1993; 50: 149–164.
- 64** Hansell AL, Knorr-Held LS, Schmid VH. Projecting respiratory mortality with a Bayesian age-period-cohort model. *Am J Respir Crit Care Med* 2003; 167: Suppl. 7, A683.
- 65** Richardson S, Thomson A, Best N, Elliott P. Interpreting posterior relative risk estimates in disease-mapping studies. *Environ Health Perspect* 2004; 112: 1016–1025.
- 66** Bohadana A, Teculescu D, Martinet Y. Mechanisms of chronic airway obstruction in smokers. *Respir Med* 2004; 98: 139–151.
- 67** Wald N, Nicolaidis-Bouman A. UK Smoking Statistics. 2nd Edn. Oxford, Oxford University Press, 1991.
- 68** Devis T, Rooney C. Death certification and the epidemiologist. *Health Statistics Quarterly* 1999; 1: 25–33.
- 69** Bray I. Application of Markov chain Monte Carlo methods to projecting cancer incidence and mortality. *J R Stat Soc Ser C Appl Stat* 2002; 51: 151–164.
- 70** Hansell AL, Walk JA, Soriano JB. What do COPD patients die from? A multiple cause coding analysis for England & Wales. *Eur Respir J* 2003; 22: 809–814.
- 71** Camilli AE, Robbins DR, Lebowitz MD. Death certificate reporting of confirmed airways obstructive disease. *Am J Epidemiol* 1991; 133: 795–800.