



**University of
Zurich**^{UZH}

**Zurich Open Repository and
Archive**

University of Zurich
University Library
Strickhofstrasse 39
CH-8057 Zurich
www.zora.uzh.ch

Year: 2010

Targeting dendritic cells to treat multiple sclerosis

Comabella, M ; Montalban, X ; Münz, C ; Lünemann, J D

DOI: <https://doi.org/10.1038/nrneurol.2010.112>

Posted at the Zurich Open Repository and Archive, University of Zurich

ZORA URL: <https://doi.org/10.5167/uzh-40806>

Journal Article

Accepted Version

Originally published at:

Comabella, M; Montalban, X; Münz, C; Lünemann, J D (2010). Targeting dendritic cells to treat multiple sclerosis. *Nature Reviews. Neurology*, 6(9):499-507.

DOI: <https://doi.org/10.1038/nrneurol.2010.112>

Harnessing Dendritic Cells To Treat Multiple Sclerosis

Manuel Comabella¹, Xavier Montalban¹, Christian Münz², Jan D. Lünemann²

¹ Centre d'Esclerosi Múltiple de Catalunya, CEM-Cat, Unitat de Neuroimmunologia Clínica, Hospital Universitari Vall d'Hebron (HUVH), Barcelona, Spain

² Institute of Experimental Immunology, University Hospital of Zürich, Zürich, Switzerland

***Corresponding authors:** Jan D. Lünemann, Institute of Experimental Immunology, Clinical Immunology and Immunotherapy, University Hospital of Zürich, Winterthurerstrasse 190, Phone: +41-44-635-3710, Fax: 212-327-7887, Email: jan.luenemann@usz.ch

Short Title: Harnessing DCs To Treat MS

Total word count: 4'227

Total word count abstract: 120

Number of figures: 2

Keywords: Multiple Sclerosis, Dendritic Cells, Autoimmunity, Immunotherapy

Abstract

Although multiple sclerosis (MS) is considered to be T cell-mediated, emerging evidence points towards a critical role of dendritic cells (DCs) in the initiation and progression of this disease. DCs are professional antigen presenting cells that can prime naive T cells and control adaptive immune responses with respect to magnitude and self-tolerance. Their powerful biological functions can be exploited for the treatment of T cell-mediated autoimmune diseases. Emerging therapies aim at inhibiting immunogenic DC functions through blockade of pro-inflammatory cytokine production and T cell costimulatory pathways. Novel approaches aim at regulating DC development and differentiation and harness the tolerogenic capacity of DCs. Here, we evaluate the prospects of future strategies that focus on DCs and DC-related targets to treat MS.

Introduction

Multiple sclerosis (MS) is considered a classical antigen-driven and T cell-mediated autoimmune disease. This view is based on the cellular composition of brain and cerebrospinal fluid (CSF)-infiltrating cells, data from the most popular animal model of MS, experimental autoimmune encephalomyelitis (EAE), which can be induced by adoptive transfer of myelin-specific CD4⁺ T cells from sick to naïve animals,¹ and by the fact that certain major histocompatibility complex (MHC) class II alleles, in particular the *HLA-DR2* haplotype carrying the *DRB1*1501* allele, represents by far the strongest genetic risk factor for MS development.^{2,3} Repertoire analyses of T and B cells in CSF and brain tissue from patients with MS show clonal expansions in both populations, indicating that there is clonal reactivity to a restricted number of yet unknown disease-relevant target antigens.⁴⁻⁷ Moreover, longitudinal studies over several years provide evidence for the long-term persistence of individual T-cell clones in the blood of patients with MS⁸⁻¹⁰ indicating a strong, persisting memory response and/or ongoing antigen exposure.

Dendritic cells (DCs) are professional antigen presenting cells that can prime naïve T cells and control adaptive immune responses with respect to magnitude, memory and self-tolerance. DCs capture and process antigens, converting proteins to peptides that are presented on MHC molecules and recognized by T cells. DCs also secrete cytokines, directing naïve T cells towards different types of T helper (Th) subsets, such as Th1, Th2, Th17 cells¹¹ (Figure 1). In addition to their function in initiating and enhancing immunogenicity, DCs have a role in maintaining central and peripheral T cell tolerance.¹² Tolerogenic DC functions are considered to be of particular importance during the steady

state, i.e. in the absence of infection and inflammation, in order to avoid a non-appropriate response to harmless antigens that may be presented subsequently when infection strikes. The discovery of these cells and their increasingly appreciated role in regulating adaptive immune responses allowed for the development of a new generation of immunotherapies that are currently investigated in infectious, malignant, and autoimmune diseases.^{13,14}

DCs: connecting innate and adaptive immunity

DCs were originally discovered and named for their stellate, tree-like shapes by Ralph M. Steinman and Zanvil Cohn in 1972.^{15,16} DCs are abundant at body surfaces where they sense and migrate with environmental, self and microbial antigens to lymphoid organs in order to present processed antigen to naïve T cells and to induce antigen-specific immunity or tolerance. To increase the efficacy of antigen-uptake, DCs employ a system of endocytic receptors, often lectins, that deliver antigens to processing compartments, leading to the presentation of antigen fragments on MHC molecules. Among them are the type 1 transmembrane protein DEC-205 (CD205), the mannose receptor MRC1 (CD206) and type 2 proteins such as DC-SIGN (CD209), langerin (CD207), and CLEC4A/DCIR. By using monoclonal antibodies that bind to these receptors as surrogate ligands, one can efficiently target vaccine antigens to DCs.¹⁴ For example, retroviral vectors gain improved immunogenicity if the envelope is engineered to target the DC-SIGN¹⁷ and the efficacy of HIV DNA vaccines can be improved by coupling antigen to a DEC-205-specific antibody.¹⁸

Most DCs circulate in the body in a so-called immature state and lack many features that lead to a strong T-cell response. Immature DCs are, nonetheless, capable of capturing antigen. DC activation by different types of stimuli such as microbial ligands for pattern-recognition receptors or inflammatory cytokines leads to maturation during which DCs transport antigen-MHC complexes to the cell surface, upregulate costimulatory molecules necessary for T cell activation and survival such as CD80 and CD86, and initiate cytokine production. The latter directs T cell differentiation and assists in the activation of antibody-producing B lineage cells.

DCs can be classified into different categories based on cell surface markers, many of which are involved in pattern recognition and antigen presentation. A widely accepted classification distinguishes human DCs into two main categories: CD11c⁺ myeloid DCs and CD11c^{dim}CD123⁺ plasmacytoid DCs, so named because of cytologic similarities to antibody-producing plasma cells.^{19,20} These subsets, which can be further subdivided based on their phenotype and functional properties, are likely to be selected to recognize distinct pathogens or forms of antigen and to initiate and regulate distinct innate and adaptive responses (Box 1).^{21,22} In the steady state, most DCs in lymphoid organs arise from a blood precursor,^{23,24} a process driven by the cytokine FLT3 ligand (FLT3LG).²⁵⁻²⁷ During inflammation and infection, other cytokines, such as GM-CSF and M-CSF, additionally mobilize increased numbers of DCs that emanate from monocyte precursors.^{28,29} Thus, the term DCs comprises a group of heterogeneous professional antigen-presenting immune cells. Nonetheless, all DC populations share characteristic features of the DC lineage such as the capacity to process and to present antigen, high levels of MHC class II expression, and the ability to prime naïve T cells.

DCs in autoimmune CNS inflammation

Although DCs are scant in the CNS parenchyma, their presence in vascular-rich regions of the healthy CNS such as perivascular spaces, the choroid plexus, and the meninges suggests they may have a role in immune surveillance of the CNS.^{30,31} DCs accumulate in the CNS parenchyma during a wide range of inflammatory responses³¹ and they are also present in inflammatory MS lesions.^{32,33} Controversy remains whether DCs in the inflamed CNS differentiate from resident CD11b⁺CD11c⁻ microglia or infiltrate from a blood-borne population. Recent studies in CD11c reporter mice identified a unique population of CNS-resident CD11b⁺ CD11c⁺ MHC-II ramified cells in various regions of the developing and adult non-diseased brain parenchyma.³⁴ These cells upregulated MHC class II molecules and showed T cell stimulatory efficacy upon IFN- γ treatment.³⁵ Similar findings were made when CNS-resident microglia were treated with DC differentiation factors such as GM-CSF^{36,37} which suggests that some microglial cells have the developmental plasticity to acquire DC-like function.

During EAE development, CD11c⁺ DCs alone are sufficient to present antigen to primed myelin-reactive T cells, thereby mediating CNS inflammation and clinical disease development.³⁸⁻⁴⁰ Peripherally derived myeloid DCs appear to be superior to plasmacytoid DCs and other subsets of myeloid cells that reside or accumulate in the CNS during EAE development in inducing the activation and differentiation of CNS-infiltrating myelin-specific T cells, presumably due to enhanced expression of T cell differentiating cytokines.⁴¹ Other studies suggested that DCs, depending on their location or differentiation state, can prevent EAE development.⁴² For example, thymus-derived

DCs loaded with myelin antigen and injected intravenously into EAE susceptible hosts, were shown to inhibit disease development. This protection was lost in thymectomized recipients indicating that DCs that home to the thymus are able to confer tolerance to antigen-selected and activated encephalitogenic T cells.⁴³ There is also evidence that plasmacytoid DCs negatively regulate encephalitogenic CD4⁺ T cell responses in mice.⁴¹

In humans, several studies report that patients with MS show altered DC phenotypes or functions. Patients with MS appear to have higher frequencies of blood myeloid DCs that express maturation markers such as CD80 and produce IL-12 and TNF- α as compared to healthy controls.⁴⁴ Similarly, DCs differentiated in vitro from blood monocytes from MS patients secrete higher levels of proinflammatory cytokines such IL-6,⁴⁵ TNF- α ⁴⁵ or IL-23.⁴⁶ Altered plasmacytoid DC phenotypes, primarily associated with decreased expression of maturation markers, have also been reported in patients with MS.⁴⁷⁻⁴⁹

Thus, peripherally derived DCs that infiltrate the CNS appear to be crucial for EAE development and it is increasingly appreciated that overproduction of particular cytokines by certain DC subsets drives autoimmune CNS inflammation. In contrast, some DCs in lymphoid organs have the capacity to confer antigen-specific tolerance which protects from disease development. Due to their central role in T cell immunity and tolerance, DCs could be targeted for immunotherapy either by obviating their immunogenic potential or by enhancing their tolerogenic functions. Indeed, several emerging immunotherapies in various autoimmune diseases specifically target DC cytokine production or antigen presentation. Before we evaluate these new strategies, we

will discuss evidence that approved MS therapeutics utilize the DC system and innate immune mechanisms to exert their beneficial effects in MS.

Approved MS therapeutics modulate DC function

Regulatory-approved MS therapeutics such as interferon beta-1a and -1b (IFN β), glatiramer acetate (GA), mitoxantrone, and natalizumab are reasonably effective in MS and appear to delay the time of progression to disability. These compounds, as well as the three monoclonal antibodies that are currently under active investigation for MS (rituximab, alemtuzumab, and daclizumab) and oral treatments (FTY720/fingolimod, cladribine), that have already proven to be effective in large phase III clinical trials, were originally designed to target autoreactive adaptive immune responses. However, immunological studies soon indicated that the mechanisms of action of both approved and currently tested, potential MS therapies is complex and involve, at least in part, innate immune functions such as DC-mediated polarization of effector T cells or DC-mediated expansion of regulatory immune cell compartments.

IFN β , a pleiotropic cytokine with antiviral activity, mainly secreted by plasmacytoid DCs, became the first drug approved for the treatment of relapsing-remitting MS. Recent studies indicated that its complex mechanisms of action in MS includes an inhibitory effect on DC-mediated Th17 cell differentiation.⁵⁰ Thus, in addition to reported direct effects on T effector cells such as Th17 lymphocytes,⁵² IFN β appears to downregulate expression of Th17 cell polarizing cytokines.⁵³ Furthermore, the clinical response to IFN β treatment in MS has been associated with DC function. Genome-wide expression profiling and functional studies in interferon-beta responders

vs. non-responders revealed that the latter showed higher expression levels of DC costimulatory molecules such as CD86 on myeloid DCs before treatment initiation, suggesting that patients with more pre-activated DCs are less susceptible to IFN β therapy.⁵⁴

GA was the first non-interferon approved for treatment of MS. GA is a synthetic polypeptide mixture containing four amino acids glutamic acid, lysine, alanine and tyrosine in a molar ratio of 1.5 : 3.6 : 4.6 : 1.0 which matches the molar ratios of the most frequent amino acids in myelin basic protein (MBP), a presumed target antigen in MS. The immunomodulatory effects of GA were believed to involve the expansion of a population of GA-reactive anti-inflammatory Th2 cells through interference with peptide/MHC binding on APCs. Hypothesizing GA also influences DC-mediated T cell polarization, Vieira et al.⁵⁵ and Kim et al.⁵⁶ showed that GA treatment led to enhancement of IL-10 and inhibition of IL-12 production in monocyte-derived DCs and blood monocytes which appeared to favor Th2 differentiation of naïve T cells.⁵⁶ The term type 1 and type 2 APCs has been introduced to characterize the ability to polarize either Th1 or Th2 cells via IL-12 or IL-10 production, respectively. In line with the aforementioned studies in humans, Weber et al. showed in experimental animal models that GA-treatment promoted the development of type 2 APCs which directed differentiation of Th2 cells and regulatory T cells.⁵⁷ Notably, adoptive transfer of GA-induced type 2 APCs reversed EAE and suppressed pathogenic T cell development.⁵⁷ Burger et al. also reported that GA inhibits pro-inflammatory monocyte function by triggering the production of the secreted IL-1 receptor antagonist (sIL-1Ra).⁵⁸ Although

not all of the abovementioned studies addressed DCs as such, they clearly extended the concept of GA's mechanisms of action to include anti-inflammatory APC functions.

The humanized monoclonal antibody natalizumab which prevents the interaction of the adhesion molecule very late activation antigen (VLA)–4 with its natural ligands, vascular cell adhesion molecule 1 (VCAM-1) and fibronectin, was designed to block trafficking of immune cells into the CNS. Indeed, the efficacy of natalizumab in MS is associated with a prolonged decrease of CSF leukocyte counts.⁵⁹ A new study indicated that natalizumab treatment, in addition to its effect adaptive immune cells, markedly reduces the number of DCs in cerebral perivascular spaces suggesting that its mechanism of action involves inhibition of DC or DC-precursor recruitment into the CNS.⁶⁰

None of the approved MS therapeutics is as of yet a specific DC-directed therapy. However, a number of DC-based therapies have been tested in EAE and other animal models and a few of them are currently being investigated or are already approved in other human autoimmune diseases, such as rheumatoid arthritis.

Emerging DC-targeting therapies

DC-targeting therapies for autoimmune diseases aim at (i) inhibiting immunogenic DC functions or at (ii) supporting their tolerogenic potential (Figure 2). Most strategies involve the use of monoclonal antibodies (mAb) which target selective molecules expressed by DCs.

Targeting cytokines produced by DCs

DC cytokines stimulate and instruct T cells where to go and what to do. Upon maturation,

DCs produce an array of potent pro-inflammatory molecules, among them IL-1, IL-6, IL-12, and TNF- α (Figure 1). The so-called IL-1 family of cytokines, which is closely linked to innate immunity, include pro-inflammatory members such as IL-1 α , IL-1 β , IL-18, IL-33 as well as molecules that suppress inflammation such as IL-1 receptor antagonist (IL-1Ra) which competes with IL-1 for receptor binding.⁶¹ IL-1 β is the most studied member of the IL-1 family because of its role in mediating autoinflammatory diseases. Mice deficient in IL-1 α and IL-1 β expression are resistant to EAE induction.⁶² IL-1 is abundantly expressed by infiltrating myeloid cells and local microglia in inflammatory MS lesions.⁶³ Based on positive clinical trials, a recombinant version of IL-1Ra, anakinra, has recently been approved for treatment of patients with RA who do not respond to standard therapy. Similar to other biologics that block inflammatory key cytokines and pathways, the most important safety issues with anakinra are increased risks of serious infections and the occurrence of malignancies due to impaired immune function. So far, the safety and efficacy of anakinra or other compounds that target IL-1⁶¹ has not been evaluated in patients with MS.

IL-6 belongs to a distinct family of proteins that are produced by innate immune cells and affect lymphocyte function. Mice deficient in IL-6 are resistant to EAE induction⁶⁴ and susceptibility is regained by exogenous administration of IL-6.⁶⁵ During EAE, IL-6 appears to shift the balance from regulatory to pathogenic effector T cells, thereby promoting disease pathology.⁶⁶ Blocking IL-6 function is, therefore, a reasonable therapeutic strategy to limit T cell-mediated autoimmunity. Tocilizumab, a humanized monoclonal antibody that competes with IL-6 for receptor binding, was recently FDA-approved for the treatment of RA. Similar to what has been noted in IL-1 targeting

studies, participants who took tocilizumab had a higher risk of serious infections compared to study participants who received placebo.⁶⁷ To our knowledge, tocilizumab or any other molecule that specifically blocks IL-6 function has not been tested in MS yet.

IL-12 and IL-23 are related heterodimeric cytokines that share a common subunit (p40) and have either p35 (IL-12) or p19 (IL-23) as a second subunit. As discussed above, IL-12 signaling directs Th1 differentiation, whereas IL-23 appears to support the differentiation and maintenance of Th17 cells. Both IL-12/p40 and IL-23/p19 have been detected in brain demyelinating MS lesions.^{68,69} Mice that are genetically deficient in IL12p40 and IL23p19 are resistant to EAE.^{70,71} Surprisingly, neutralization of the IL-12/23p40 subunit by the monoclonal antibody ustekinumab – which is effective in patients with psoriasis, psoriatic arthritis, and in patients with Crohn's disease – failed to show any efficacy in patients with relapsing-remitting MS.⁷² An interpretation for this lack of efficacy is that the cytokine-mediated immunopathology observed in EAE models cannot be simply extrapolated to MS. Experience with two important T cell effector cytokines support of this hypothesis: IFN- γ is partially protective in EAE but its therapeutic use led to disease exacerbations in MS.⁷³ TNF- α is thought to be pathogenic in EAE whereas TNF- α neutralization led to disease exacerbations in patients with MS.⁷⁴ However, it can not be excluded that other factors such as poor CNS availability of the systemically administered antibody or the short study period (24 weeks) contributed to the negative results of the aforementioned clinical trial.⁷²

The discovery of cytokines that promote DC development and differentiation such as FLT3L, GM-CSF, and M-CSF accelerated DC research.⁷⁵ GM-CSF is produced by

tissue stromal cells, and by activated T cells and NK cells and is, therefore, enriched at sites of inflammation.⁷⁶ Although GM-CSF is dispensable for steady-state DC development,⁷⁷ it supports DC differentiation from monocyte progenitors during inflammation and infection.^{28,29,76} Recruitment of blood monocytes appear to sustain autoimmune tissue damage during EAE.⁷⁸ Therefore, inhibition of inflammation-induced DC differentiation from monocytes through GM-CSF blockade might have a therapeutic merit in autoimmune diseases. This approach is currently under investigation in two phase II studies in patients with RA who receive antibodies to GM-CSF (MOR103 and KB003). Therapies that specifically target DC homeostasis and inflammation-induced DC generation have, so far, not been initiated in MS.

Targeting costimulation provided by DCs

During T cell recognition of peptide/MHC complexes presented by DCs, costimulatory molecules can provide positive signals that promote T cell activation or negative signals that inhibit T cell responses. The B7:CD28 superfamily, a TNF:TNFR subfamily that lack death domains, includes a number of well characterized T cell costimulatory molecules that regulate T cell activation and tolerance. Among them are the proteins B7-1 (CD80) and B7-2 (CD86) that bind to CD28 on T cells and support T cell activation. Blockade of the B7:CD28 interaction by a fusion protein, called CTLA4-Ig, which binds to CD80 and CD86 is not only effective in limiting tissue inflammation in many preclinical models of autoimmune diseases but has also already been approved for the treatment of patients with rheumatoid arthritis (abatacept).^{79,80} A recent open-label phase I clinical trial found that intravenous infusions of CTLA4-Ig were well tolerated in

patients with MS. Future studies will show whether B7:CD28 blockade as well as other and new costimulatory inhibitors, such as anti-CD40 and CD154 antagonists, will prove to be safe and effective in MS.

Targeting tolerogenic DC functions

DCs need to undergo terminal differentiation or maturation in order to coordinate protective immunity. Maturation is induced by a spectrum of environmental and endogenous stimuli, among them ligands for toll-like receptors and TNF-receptors such as CD40. In the steady state, i.e. in the absence of maturation stimuli, DCs can induce antigen unresponsiveness or T cell tolerance. In the first human study to test tolerogenic DC functions, application of immature DCs pulsed with an influenza matrix protein (MP) derived peptide led to a transient inhibition of preexisting MP-specific effector T cell functions and the appearance of MP-specific IL-10 producing cells which showed reduced IFN- γ production and lacked killer activity.⁸¹

Experimental models of autoimmune CNS inflammation provided evidence that antigen-specific T cell tolerance can be induced by mucosal (oral) administration of myelin antigen,^{82,83} by altered peptide ligands (APLs) that interfere with the interaction of MHC/peptide complexes with encephalitogenic T cells^{84,85} or by administration of high doses of either myelin peptides or soluble MHC-myelin peptide complexes which primarily aim at eliminating or inactivating myelin-specific T cells.⁸⁶⁻⁸⁸ Based on these preclinical studies, ongoing trials are evaluating the safety, tolerability and efficacy of antigen-specific therapies in MS.^{89,90} In a small 24-month randomized controlled clinical trial in patients with primary and secondary progressive MS, the intravenous injection of

soluble myelin basic protein (MBP) peptide (MBP8298, dirucotide), administered without adjuvants, was well tolerated and showed moderate effects on disease progression (as determined by changes in EDSS) in patients carrying MS-associated MHC haplotypes DR2 and/or DR4.⁹¹ DNA vaccination is a different approach to achieve antigen-specific tolerance.^{92,93} In a randomized controlled phase I/II trial, intramuscular administration of a DNA vaccine encoding full-length human MBP (BHT-3009) in patients with relapsing-remitting and secondary-progressive MS was well tolerated, led to a decrease in proliferation and IFN- γ production of myelin-reactive CD4⁺ T cells and provided favorable trends on brain MRI metrics.⁹⁴ Larger phase II and phase III clinical trials have now been initiated to test the effect of soluble MBP peptide administration and MBP DNA vaccination in patients with relapsing-remitting and secondary progressive MS. A third strategy that is currently pursued is to re-infuse peripheral blood lymphocytes that have been chemically coupled with multiple peptides from supposedly immunodominant myelin antigens.⁹⁵ Preclinical experiments in EAE models have shown that the latter approach can prevent disease onset and ameliorate disease progression⁹⁶⁻⁹⁹ and an open label phase I trial that tests the safety and efficacy of this strategy in patients with relapsing-remitting MS has recently been initiated.⁹⁰

We hypothesize that the mechanisms of the aforementioned approaches involve DCs that are specialized to take up the externally administered myelin peptides or protein for antigen specific tolerance induction. In preclinical models, the administration of incompletely matured DCs loaded with myelin peptide can suppress EAE development.¹⁰⁰ Notably, targeting of antigens to DCs via antigen coupling to antibodies against specific uptake receptors such as the decalectin DEC-205 increases the efficacy

by which antigens are delivered to the immune system by more than 100-fold.¹⁰¹⁻¹⁰⁴ DC-targeting leads to either antigen-specific tolerance induction or immunity depending on the maturation state of the antigen-presenting DCs.¹⁰⁵⁻¹⁰⁷ Hawiger et al. showed that mice pre-injected with a monoclonal antibody to DEC-205, coupled with the encephalitogenic MOG₃₅₋₅₅ peptide were completely resistant to EAE development induced by subsequent MOG₃₅₋₅₅ immunization.¹⁰⁸ Similar targeting strategies were also developed for the macrophage mannose receptor,¹⁰⁹ DC-SIGN,¹¹⁰ DCIRs,^{21,111} DNGR-1,¹¹² DCAR1,¹¹³ BDCA-2¹¹⁴ among others. The mechanisms that confer T cell tolerance in these animal models are diverse and involve deletion of T cells,¹¹⁵ antigen-unresponsiveness^{105,108} and/or the generation of regulatory T cells.^{107,116}

One potential obstacle in translating these tolerization paradigms into the clinic is that patients with MS show increased frequencies of myeloid DCs expressing co-stimulatory, T cell activating, molecules, presumably due to DC maturation by chronic autoimmune inflammation,⁴⁴⁻⁴⁶ where antigen targeted to DCs, even in the absence of adjuvants, could elicit unwanted and potentially deleterious T cell effector responses. In proof-of-concept studies for antigen-specific tolerization therapies in MS, during which patients received an altered peptide ligand (APL) based on the amino acid sequence of MBP₈₃₋₉₉,^{117,118} some patients experienced unexpected disease exacerbations which could be linked with unforeseen immunogenic *in vivo* effects of this APL.¹¹⁸ Limiting the immunogenic potential of DCs by blocking the production or signaling of pro-inflammatory cytokines such as IL-6 might reduce the risk of triggering pathogenic T cell responses by antigen-specific therapies.⁶⁴ An alternative approach is to support tolerogenic DC functions in an antigen-unspecific way, e.g. through inhibition of DC

maturation.¹¹⁹⁻¹²¹ Small molecule inhibitors of signaling molecules involved in DC maturation such as the Janus kinase 3 (Jak3) and the spleen tyrosine kinase (Syk)^{122,123} are currently under investigation in patients with RA and psoriasis.^{124,125}

Concluding remarks

DCs are central in inducing immunity and in regulating immune tolerance. In experimental models of autoimmune diseases including EAE, DCs induce and maintain pathogenic effector T cell functions. Whether DCs initiate adaptive autoimmunity in MS or whether these cells contribute to disease progression at later stages is unknown. Nonetheless, their powerful biological function makes them key targets for immunotherapeutic approaches. Emerging therapies aim at inhibiting immunogenic DC functions through blockade of pro-inflammatory cytokine production and T cell costimulatory pathways. Novel approaches aim at regulating DC development and differentiation and harness the tolerogenic capacity of DCs. Much has yet to be learned about the function of DC subsets and their T cell mobilizing potential in intact human lymphoid tissue and during chronic inflammation, as seen in MS. Nonetheless, the tools to harness DC functions in order to prevent or to limit autoimmune CNS inflammation are available and will likely become more specific and effective in the near future. These tools will allow us to address whether DC-targeting strategies either alone or in combination with established therapies will improve our ability to efficiently limit disease activity and progression in patients with MS.

Box 1: Dendritic Cell Subsets

Dendritic cells (DCs) initiate cell-extrinsic immune responses in higher eukaryotes.¹²⁶ They sense pathogen invasion and excessive cell death via pathogen associated molecular pattern (PAMP) receptors, process antigens for presentation on major histocompatibility complex (MHC) molecules to T cells and communicate information about the conditions, under which they have encountered the antigen, to innate and adaptive lymphocytes in secondary lymphoid tissues.^{127,128} The DC lineage of both mouse and man is, however, composed of at least four distinct subsets. These are plasmacytoid, migratory myeloid, secondary lymphoid tissue resident myeloid and inflammatory DCs.¹²⁶ Plasmacytoid DC are the main type I interferon producing cells during immune responses.¹²⁹ Inflammatory DCs develop from monocytes at sites of inflammation.¹³⁰ Migratory DCs transfer antigen from the periphery to secondary lymphoid tissues and communicate to lymphocytes the conditions, under which they have encountered the antigen via cytokines and co-stimulatory molecules, whose up-regulation, together with enhanced antigen processing and MHC presentation, is collectively called maturation.¹²⁶ Prototypic migratory DCs are Langerhans cells of the epidermis. Resident DCs in secondary lymphoid organs are similar to migratory DCs, but might differ in MHC class I versus MHC class II antigen presentation from them.¹³¹ It has been proposed that migratory DCs present antigens preferentially via MHC class II molecules for CD4⁺ T cell stimulation, whereas resident DCs more efficiently cross-present antigens in secondary lymphoid tissues on MHC class I molecules to CD8⁺ T cells after CD40/CD40L mediated maturation by activated CD4⁺ T cells. In mice these efficiently cross-presenting DCs can be identified by their CD8 expression, whereas in humans the BDCA3⁺ DC subset has been proposed for this

function.¹³² Therefore, it is important to keep in mind that autoantigens could be presented with different efficacy by distinct DC subsets for autoreactive CD4⁺ and CD8⁺ T cell stimulation during MS, and that any tolerizing strategies might have to target the respective subsets to modulate CD4⁺ or CD8⁺ T cell mediated autoimmunity.

Acknowledgements

X.M. has received speaking honoraria for speaking and travel expenses to travel at scientific meetings, has been a steering member or participated in advisory boards in corporate-sponsored clinical trials or has had consulting agreements in the past years with Bayer Schering Pharma, Biogen Idec, EMD Merck Serono, Genentech, Genzyme, Novartis, Sanofi-Aventis, and Teva. C.M. receives support from the National Cancer Institute, the Foundation for the National Institutes of Health (Grand Challenges in Global Health) and the Swiss National Research Foundation. J.D.L. is receiving grant support from the Swiss National Research Foundation, the Gemeinnützige Hertie Stiftung, the Swiss Multiple Sclerosis Foundation, the Betty and David Koetser Foundation, the Ernst Schering Foundation, the Baxter Research Grant Program, and has received honoraria and consultation fees from Baxter, Bayer-Schering, EMD Merck-Serono, and Talecris.

References

1. Ben-Nun, A., Wekerle, H., & Cohen, I.R. The rapid isolation of clonable antigen-specific T lymphocyte lines capable of mediating autoimmune encephalomyelitis. *Eur. J. Immunol.* 11, 195-199 (1981).
2. McFarland, H.F. & Martin, R. Multiple sclerosis: a complicated picture of autoimmunity. *Nat. Immunol.* 8, 913-919 (2007).
3. Oksenberg, J.R. et al. The genetics of multiple sclerosis: SNPs to pathways to pathogenesis. *Nat. Rev. Genet.* 9, 516-526 (2008).
4. Qin, Y. et al. Clonal expansion and somatic hypermutation of V(H) genes of B cells from cerebrospinal fluid in multiple sclerosis. *J. Clin. Invest.* 102, 1045-1050 (1998).
5. Babbe, H. et al. Clonal expansions of CD8⁺ T cells dominate the T cell infiltrate in active multiple sclerosis lesions as shown by micromanipulation and single cell polymerase chain reaction. *J. Exp. Med.* 192, 393-404 (2000).
6. Colombo, M. et al. Accumulation of clonally related B lymphocytes in the cerebrospinal fluid of multiple sclerosis patients. *J. Immunol.* 164, 2782-2789 (2000).

7. Obermeier, B. et al. Matching of oligoclonal immunoglobulin transcriptomes and proteomes of cerebrospinal fluid in multiple sclerosis. *Nat. Med.* **14**, 688-693 (2008).
8. Meinl, E. Myelin basic protein-specific T lymphocyte repertoire in multiple sclerosis. Complexity of the response and dominance of nested epitopes due to recruitment of multiple T cell clones. *J. Clin. Invest.* **92**, 2633-2643 (1993).
9. Muraro, P.A. Molecular tracking of antigen-specific T cell clones in neurological immune-mediated disorders. *Brain* **126**, 20-31 (2003).
10. Skulina, C. Multiple sclerosis: brain-infiltrating CD8⁺ T cells persist as clonal expansions in the cerebrospinal fluid and blood. *Proc. Natl. Acad. Sci. U. S. A.* **101**, 2428-2433 (2004).
11. Steinman, R.M. Dendritic cells: understanding immunogenicity. *Eur. J. Immunol.* **37**, S53-60 (2007).
12. Steinman, R.M., Hawiger, D. & Nussenzweig, M.C. Tolerogenic dendritic cells. *Annu. Rev. Immunol.* **21**, 685-711 (2003).
13. Steinman, R.M. & Banchereau, J. Taking dendritic cells into medicine. *Nature* **449**, 419-26 (2007).

14. Steinman, R.M. Dendritic cells in vivo: a key target for a new vaccine science. *Immunity* **29**, 319-324 (2008).
15. Steinman, R.M. & Cohn, Z.A. Identification of a novel cell type in peripheral lymphoid organs of mice. I. Morphology, quantitation, tissue distribution. *J. Exp. Med.* **137**, 1142-1162 (1973).
16. Steinman, R.M. & Cohn, Z.A. Identification of a novel cell type in peripheral lymphoid organs of mice. II. Functional properties in vitro. *J. Exp. Med.* **139**, 380-397 (1974).
17. Yang, L. et al. Engineered lentivector targeting of dendritic cells for in vivo immunization. *Nat. Biotechnol.* **26**, 326-334 (2008).
18. Nchinda, G. et al. The efficacy of DNA vaccination is enhanced in mice by targeting the encoded protein to dendritic cells. *J. Clin. Invest.* **118**, 1427-1436 (2008).
19. Liu, Y.J. IPC: professional type 1 interferon-producing cells and plasmacytoid dendritic cell precursors. *Annu. Rev. Immunol.* **23**, 275-306 (2005).
20. Wu, L. & Liu, Y.J. Development of dendritic-cell lineages. *Immunity* **26**, 741-750 (2007).

21. Dudziak, D. et al. Differential antigen processing by dendritic cell subsets in vivo.

Science **315**, 107-111 (2007).

22. Liu, K. et al. In vivo analysis of dendritic cell development and homeostasis. *Science*

324, 392-397 (2009).

23. Fogg, D.K. et al. Sibon C, Miled C, Jung S, Aucouturier P, Littman DR, Cumano A,

Geissmann F. A clonogenic bone marrow progenitor specific for macrophages and

dendritic cells. *Science* **311**, 83-87 (2006).

24. Liu, K. et al. Origin of dendritic cells in peripheral lymphoid organs of mice.

Nat. Immunol. **8**, 578-583 (2007).

25. D'Amico, A. & Wu, L. The early progenitors of mouse dendritic cells and

plasmacytoid predendritic cells are within the bone marrow hemopoietic precursors

expressing Flt3. *J. Exp. Med.* **198**, 293-303 (2003).

26. Karsunky, H. et al. Flt3 ligand regulates dendritic cell development from Flt3⁺

lymphoid and myeloid-committed progenitors to Flt3⁺ dendritic cells in vivo. *J. Exp.*

Med. **198**, 305-313 (2003).

27. Waskow, C. et al. The receptor tyrosine kinase Flt3 is required for dendritic cell

development in peripheral lymphoid tissues. *Nat. Immunol.* **9**, 676-683 (2008).

28. León, B., López-Bravo, M. & Ardavin, C. Monocyte-derived dendritic cells formed at the infection site control the induction of protective T helper 1 responses against *Leishmania*. *Immunity* **26**, 519-531 (2007).
29. Shortman, K. & Naik, S.H. Steady-state and inflammatory dendritic-cell development. *Nat. Rev. Immunol.* **7**, 19-30 (2007).
30. Matyszak, M.K. & Perry, V.H. The potential role of dendritic cells in immune-mediated inflammatory diseases in the central nervous system. *Neuroscience* **74**, 599-608 (1996).
31. Pashenkov, M. & Link, H. Dendritic cells and immune responses in the central nervous system. *Trends Immunol.* **23**, 69-70 (2002).
32. Serafini, B. et al. Dendritic cells in multiple sclerosis lesions: maturation stage, myelin uptake, and interaction with proliferating T cells. *J. Neuropathol. Exp. Neurol.* **65**, 124-141 (2006).
33. Lande, R. et al. Plasmacytoid dendritic cells in multiple sclerosis: intracerebral recruitment and impaired maturation in response to interferon-beta. *J. Neuropathol. Exp. Neurol.* **67**, 388-401 (2008).

34. Bulloch, K. et al. CD11c/EYFP transgene illuminates a discrete network of dendritic cells within the embryonic, neonatal, adult, and injured mouse brain. *J. Comp. Neurol.* **508**, 687-710 (2008).
35. Gottfried-Blackmore, A. et al. Acute in vivo exposure to interferon-gamma enables resident brain dendritic cells to become effective antigen presenting cells. *Proc. Natl. Acad. Sci. U.S.A.* Nov 11 (2009) [Epub ahead of print].
36. Fischer, H.G. & Reichmann, G. Brain dendritic cells and macrophages/microglia in central nervous system inflammation. *J. Immunol.* **166**, 2717-2726 (2001).
37. Santambrogio, L. Developmental plasticity of CNS microglia. *Proc. Natl. Acad. Sci. U.S.A.* **98**, 6295-6300 (2001).
38. Dittel, B.N. et al. Presentation of the self antigen myelin basic protein by dendritic cells leads to experimental autoimmune encephalomyelitis. *J. Immunol.* **163**, 32-39 (1999).
39. McMahon, E.J. Epitope spreading initiates in the CNS in two mouse models of multiple sclerosis. *Nat. Med.* **11**, 335-339 (2005).
40. Greter, M. et al. Dendritic cells permit immune invasion of the CNS in an animal model of multiple sclerosis. *Nat. Med.* **11**, 328-334 (2005).

41. Bailey, S.L. et al. CNS myeloid DCs presenting endogenous myelin peptides 'preferentially' polarize CD4⁺ T(H)-17 cells in relapsing EAE. *Nat. Immunol.* **8**, 172-180 (2007).
42. Suter, T. et al. The brain as an immune privileged site: dendritic cells of the central nervous system inhibit T cell activation. *Eur. J. Immunol.* **33**, 2998-3006 (2003).
43. Khoury, S.J. et al. Mechanisms of acquired thymic tolerance in experimental autoimmune encephalomyelitis: thymic dendritic-enriched cells induce specific peripheral T cell unresponsiveness in vivo. *J. Exp. Med.* **182**, 357-366 (1995).
44. Karni, A. et al. Innate immunity in multiple sclerosis: myeloid dendritic cells in secondary progressive multiple sclerosis are activated and drive a proinflammatory immune response. *J. Immunol.* **177**, 4196-4202 (2006).
45. Huang, Y.M. et al. Multiple sclerosis is associated with high levels of circulating dendritic cells secreting pro-inflammatory cytokines. *J. Neuroimmunol.* **99**, 82-90 (1999).
46. Vaknin-Dembinsky, A., Balashov, K. & Weiner, H.L. IL-23 is increased in dendritic cells in multiple sclerosis and down-regulation of IL-23 by antisense oligos increases dendritic cell IL-10 production. *J. Immunol.* **176**, 7768-7774 (2006).

47. Stasiulek, M. et al. Impaired maturation and altered regulatory function of plasmacytoid dendritic cells in multiple sclerosis. *Brain* **129**, 1293-1305 (2006).
48. López, C. et al. Altered maturation of circulating dendritic cells in primary progressive MS patients. *J. Neuroimmunol.* **175**, 183-191 (2006).
49. Schwab, N. et al. An imbalance of two functionally and phenotypically different subsets of plasmacytoid dendritic cells characterizes the dysfunctional immune regulation in multiple sclerosis. *J. Immunol.* **184**, 5368-5374 (2010).
50. Ramgolam, V.S. et al. IFN-beta inhibits human Th17 cell differentiation. *J. Immunol.* **183**, 5418-5427 (2009).
51. Zhang, X. et al. IFN-beta1a inhibits the secretion of Th17-polarizing cytokines in human dendritic cells via TLR7 up-regulation. *J. Immunol.* **182**, 3928-3936 (2009).
52. Durelli, L. et al. T-helper 17 cells expand in multiple sclerosis and are inhibited by interferon-beta. *Ann. Neurol.* **65**, 499-509 (2009).
53. Axtell, R.C. et al. T helper type 1 and 17 cells determine efficacy of interferon-beta in multiple sclerosis and experimental encephalomyelitis. *Nat. Med.* **16**, 406-412 (2010).

54. Comabella, M. *et al.* A type I interferon signature in monocytes is associated with poor response to interferon-beta in multiple sclerosis. *Brain* **132**, 3353-3365 (2009).
55. Vieira, P.L. *et al.* Glatiramer acetate (copolymer-1, copaxone) promotes Th2 cell development and increased IL-10 production through modulation of dendritic cells. *J. Immunol.* **170**, 4483-4488 (2003).
56. Kim, H.J. *et al.* Type 2 monocyte and microglia differentiation mediated by glatiramer acetate therapy in patients with multiple sclerosis. *J. Immunol.* **172**, 7144-7153 (2004).
57. Weber, M.S. *et al.* Type II monocytes modulate T cell-mediated central nervous system autoimmune disease. *Nat. Med.* **13**, 935-943 (2007).
58. Burger, D. *et al.* Glatiramer acetate increases IL-1 receptor antagonist but decreases T cell-induced IL-1beta in human monocytes and multiple sclerosis. *Proc. Natl. Acad. Sci. U.S.A.* **106**, 4355-4359 (2009).
59. Stüve, O. *et al.* Immune surveillance in multiple sclerosis patients treated with natalizumab. *Ann. Neurol.* **59**, 743-747 (2006).
60. del Pilar Martin, M. *et al.* Decrease in the numbers of dendritic cells and CD4⁺ T cells in cerebral perivascular spaces due to natalizumab. *Arch. Neurol.* **65**, 1596-1603 (2008).

61. Dinarello, C.A. Immunological and inflammatory functions of the interleukin-1 family. *Annu. Rev. Immunol.* **27**, 519-550 (2009).
62. Matsuki, T. et al. Abnormal T cell activation caused by the imbalance of the IL-1/IL-1R antagonist system is responsible for the development of experimental autoimmune encephalomyelitis. *Int. Immunol.* **18**, 399-407 (2006).
63. Cannella, B. & Raine, C.S. The adhesion molecule and cytokine profile of multiple sclerosis lesions. *Ann. Neurol.* **37**, 424-435 (1995).
64. Okuda, Y. et al. IL-6 plays a crucial role in the induction phase of myelin oligodendrocyte glycoprotein 35-55 induced experimental autoimmune encephalomyelitis. *J. Neuroimmunol.* **101**, 188-196 (1999).
65. Mendel, I. et al. Interleukin-6 functions in autoimmune encephalomyelitis: a study in gene-targeted mice. *Eur. J. Immunol.* **28**, 1727-1737 (1998).
66. Korn, T. et al. IL-6 controls Th17 immunity in vivo by inhibiting the conversion of conventional T cells into Foxp3⁺ regulatory T cells. *Proc. Natl. Acad. Sci. U.S.A.* **105**, 18460-18465 (2008).

67. Smolen, J.S. et al. Effect of interleukin-6 receptor inhibition with tocilizumab in patients with rheumatoid arthritis (OPTION study): a double-blind, placebo-controlled, randomised trial. *Lancet* **371**, 987-997 (2008).
68. Windhagen, A. et al. Expression of costimulatory molecules B7-1 (CD80), B7-2 (CD86), and interleukin 12 cytokine in multiple sclerosis lesions. *J. Exp. Med.* **182**, 1985-1996.
69. Li, Y. et al. Increased IL-23p19 expression in multiple sclerosis lesions and its induction in microglia. *Brain* **130**, 490-501 (2007).
70. Becher, B., Durell, B.G. & Noelle, R.J. IL-23 produced by CNS-resident cells controls T cell encephalitogenicity during the effector phase of experimental autoimmune encephalomyelitis. *J. Clin. Invest.* **112**, 1186-1191 (2003).
71. Cua, D.J., Sherlock, J. & Chen, Y. Interleukin-23 rather than interleukin-12 is the critical cytokine for autoimmune inflammation of the brain. *Nature* **421**, 744-748 (2003).
72. Segal, B.M. et al. Repeated subcutaneous injections of IL12/23 p40 neutralising antibody, ustekinumab, in patients with relapsing-remitting multiple sclerosis: a phase II, double-blind, placebo-controlled, randomised, dose-ranging study. *Lancet Neurol.* **7**, 796-804 (2008).

73. Panitch, H.S. et al. Exacerbations of multiple sclerosis in patients treated with gamma interferon. *Lancet* **1**, 893-895 (1987).
74. The Lenercept Multiple Sclerosis Study Group and The University of British Columbia MS/MRI Analysis Group. TNF neutralization in MS: results of a randomized, placebo-controlled multicenter study. *Neurology* **53**, 457-465 (1999).
75. Merad, M. & Manz, M.G. Dendritic cell homeostasis. *Blood* **113**, 3418-3427 (2009).
76. Hamilton, J.A. Colony-stimulating factors in inflammation and autoimmunity. *Nat. Rev. Immunol.* **8**, 533-544 (2008).
77. Vremec, D. et al. The influence of granulocyte/macrophage colony-stimulating factor on dendritic cell levels in mouse lymphoid organs. *Eur. J. Immunol.* **27**, 40-44 (1997).
78. Mildner, A. et al. CCR2⁺Ly-6C^{hi} monocytes are crucial for the effector phase of autoimmunity in the central nervous system. *Brain* **132**, 2487-2500 (2009).
79. Salomon, B. & Bluestone, J.A. Complexities of CD28/B7: CTLA-4 costimulatory pathways in autoimmunity and transplantation. *Annu. Rev. Immunol.* **19**, 225-252 (2001).
80. Bluestone, J.A., St Clair, E.W. & Turka, L.A. CTLA4Ig: bridging the basic immunology with clinical application. *Immunity* **24**, 233-238 (2006).

81. Dhodapkar, M.V. et al. Antigen-specific inhibition of effector T cell function in humans after injection of immature dendritic cells. *J. Exp. Med.* **193**, 233-238 (2001).
82. Weiner, H.L. et al. Double-blind pilot trial of oral tolerization with myelin antigens in multiple sclerosis. *Science* **259**, 1321-1324 (1993).
83. Meyer, A.L. et al. Suppression of murine chronic relapsing experimental autoimmune encephalomyelitis by the oral administration of myelin basic protein. *J. Immunol.* **157**, 4230-4238 (1996).
84. Nicholson, L.B. et al. An altered peptide ligand mediates immune deviation and prevents autoimmune encephalomyelitis. *Immunity* **3**, 397-405 (1995).
85. Anderton, S.M. et al. Fine specificity of the myelin-reactive T cell repertoire: implications for TCR antagonism in autoimmunity. *J. Immunol.* **161**, 3357-3364 (1998).
86. Critchfield, J.M. et al. T cell deletion in high antigen dose therapy of autoimmune encephalomyelitis. *Science* **263**, 1139-1143 (1994).
87. Elliott, E.A. et al. Treatment of experimental encephalomyelitis with a novel chimeric fusion protein of myelin basic protein and proteolipid protein. *J. Clin. Invest.* **98**, 1602-1612 (1996).

88. McFarland, H.I. et al. Effective antigen-specific immunotherapy in the marmoset model of multiple sclerosis. *J. Immunol.* **166**, 2116-2121 (2001).
89. Lopez-Diego, R.S. & Weiner, H.L. Novel therapeutic strategies for multiple sclerosis - a multifaceted adversary. *Nat. Rev. Drug Discov.* **7**, 909-925 (2008).
90. Lutterotti, A., Sospedra, M. & Martin, R. Antigen-specific therapies in MS - Current concepts and novel approaches. *J. Neurol. Sci.* **274**, 18-22 (2008).
91. Warren, K.G. et al. Intravenous synthetic peptide MBP8298 delayed disease progression in an HLA Class II-defined cohort of patients with progressive multiple sclerosis: results of a 24-month double-blind placebo-controlled clinical trial and 5 years of follow-up treatment. *Eur. J. Neurol.* **13**, 887-895 (2006).
92. Lobell, A. et al. Vaccination with DNA encoding an immunodominant myelin basic protein peptide targeted to Fc of immunoglobulin G suppresses experimental autoimmune encephalomyelitis. *J. Exp. Med.* **187**, 1543-1548 (1998).
93. Weissert, R. et al. Protective DNA vaccination against organ-specific autoimmunity is highly specific and discriminates between single amino acid substitutions in the peptide autoantigen. *Proc. Natl. Acad. Sci. U.S.A.* **97**, 1689-1694 (2000).

94. Bar-Or, A. et al. Induction of antigen-specific tolerance in multiple sclerosis after immunization with DNA encoding myelin basic protein in a randomized, placebo-controlled phase 1/2 trial. *Arch. Neurol.* **64**, 1407-1415 (2007).
95. Bielekova, B. et al. Expansion and functional relevance of high-avidity myelin-specific CD4⁺ T cells in multiple sclerosis. *J. Immunol.* **172**, 3893-3904 (2004).
96. Kennedy, M.K. et al. Regulation of the effector stages of experimental autoimmune encephalomyelitis via neuroantigen-specific tolerance induction. *J. Immunol.* **145**, 117-126 (1990).
97. Kennedy, M.K. et al. Inhibition of murine relapsing experimental autoimmune encephalomyelitis by immune tolerance to proteolipid protein and its encephalitogenic peptides. *J. Immunol.* **144**, 909-915 (1990).
98. Tan, L.J. et al. Successful treatment of paralytic relapses in adoptive experimental autoimmune encephalomyelitis via neuroantigen-specific tolerance. *J. Immunol.* **147**, 1797-1802 (1991).
99. Tan, L.J., Kennedy, M.K. & Miller, S.D. Regulation of the effector stages of experimental autoimmune encephalomyelitis via neuroantigen-specific tolerance induction. II. Fine specificity of effector T cell inhibition. *J. Immunol.* **148**, 2748-2755 (1992).

100. Menges, M. et al. Repetitive injections of dendritic cells matured with tumor necrosis factor alpha induce antigen-specific protection of mice from autoimmunity. *J. Exp. Med.* **195**, 15-21 (2002).

101. Trumfheller, C. et al. Intensified and protective CD4⁺ T cell immunity in mice with anti-dendritic cell HIV gag fusion antibody vaccine. *J. Exp. Med.* **203**, 607-617 (2006).

102. Soares, H. et al. A subset of dendritic cells induces CD4⁺ T cells to produce IFN-gamma by an IL-12-independent but CD70-dependent mechanism in vivo. *J. Exp. Med.* **204**, 1095-1106 (2007).

103. Nchinda, G. et al. The efficacy of DNA vaccination is enhanced in mice by targeting the encoded protein to dendritic cells. *J. Clin. Invest.* **118**, 1427-1436 (2008).

104. Jiang, W. et al. The receptor DEC-205 expressed by dendritic cells and thymic epithelial cells is involved in antigen processing. *Nature* **375**, 151-155 (1995).

105. Hawiger, D. et al. Dendritic cells induce peripheral T cell unresponsiveness under steady state conditions in vivo. *J. Exp. Med.* **194**, 769-779 (2001).

106. Bonifaz, L. et al. Efficient targeting of protein antigen to the dendritic cell receptor DEC-205 in the steady state leads to antigen presentation on major histocompatibility

complex class I products and peripheral CD8⁺ T cell tolerance. *J. Exp. Med.* **196**, 1627-1638 (2002).

107. Mahnke, K. et al. Induction of CD4⁺/CD25⁺ regulatory T cells by targeting of antigens to immature dendritic cells. *Blood* **101**, 4862-4869 (2003).

108. Hawiger, D. et al. Immunological unresponsiveness characterized by increased expression of CD5 on peripheral T cells induced by dendritic cells in vivo. *Immunity* **20**, 695-705 (2004).

109. Burgdorf, S. et al. Distinct pathways of antigen uptake and intracellular routing in CD4 and CD8 T cell activation. *Science* **316**, 612-616 (2007).

110. Tacken, P.J. et al. Effective induction of naive and recall T-cell responses by targeting antigen to human dendritic cells via a humanized anti-DC-SIGN antibody. *Blood* **106**, 1278-1285 (2005).

111. Meyer-Wentrup, F. Targeting DCIR on human plasmacytoid dendritic cells results in antigen presentation and inhibits IFN-alpha production. *Blood* **111**, 4245-4253 (2008).

112. Sancho, D. et al. Tumor therapy in mice via antigen targeting to a novel, DC-restricted C-type lectin. *J. Clin. Invest.* **118**, 2098-2110 (2008).

113. Kaden, S.A. et al. Enhanced dendritic cell-induced immune responses mediated by the novel C-type lectin receptor mDCAR1. *J. Immunol.* **183**, 5069-5078 (2009).
114. Dzionek, A. et al. BDCA-2, a novel plasmacytoid dendritic cell-specific type II C-type lectin, mediates antigen capture and is a potent inhibitor of interferon alpha/beta induction. *J. Exp. Med.* **194**, 1823-1834 (2001).
115. Mukhopadhyaya, A. et al. Selective delivery of beta cell antigen to dendritic cells in vivo leads to deletion and tolerance of autoreactive CD8⁺ T cells in NOD mice. *Proc. Natl. Acad. Sci. U.S.A.* **105**, 6374-6379 (2008).
116. Tarbell, K.V. et al. Dendritic cell-expanded, islet-specific CD4⁺ CD25⁺ CD62L⁺ regulatory T cells restore normoglycemia in diabetic NOD mice. *J. Exp. Med.* **204**, 191-201 (2007).
117. Kappos, L. et al. Induction of a non-encephalitogenic type 2 T helper-cell autoimmune response in multiple sclerosis after administration of an altered peptide ligand in a placebo-controlled, randomized phase II trial. The Altered Peptide Ligand in Relapsing MS Study Group. *Nat. Med.* **6**, 1176-1182 (2000).
118. Bielekova, B. et al. Encephalitogenic potential of the myelin basic protein peptide (amino acids 83-99) in multiple sclerosis: results of a phase II clinical trial with an altered peptide ligand. *Nat. Med.* **6**, 1167-1175 (2000).

119. Piemonti, L. et al. Vitamin D3 affects differentiation, maturation, and function of human monocyte-derived dendritic cells. *J. Immunol.* **164**, 4443-4451 (2000).
120. Griffin, M.D. Dendritic cell modulation by 1alpha,25 dihydroxyvitamin D3 and its analogs: a vitamin D receptor-dependent pathway that promotes a persistent state of immaturity in vitro and in vivo. *Proc. Natl. Acad. Sci. U.S.A.* **98**, 6800-6805 (2001).
121. Benkhoucha, M. et al. Hepatocyte growth factor inhibits CNS autoimmunity by inducing tolerogenic dendritic cells and CD25⁺Foxp3⁺ regulatory T cells. *Proc. Natl. Acad. Sci. U.S.A.* **107**, 6424-6429 (2010).
122. Rivas-Caicedo, A. et al. Jak3 is involved in dendritic cell maturation and CCR7-dependent migration. *PLoS One.* **4**, e7066 (2009).
123. Walker, J.G. et al. Characterisation of a dendritic cell subset in synovial tissue which strongly expresses Jak/STAT transcription factors from patients with rheumatoid arthritis. *Ann. Rheum. Dis.* **66**, 992-999 (2007).
124. Boy, M.G. et al. Double-blind, placebo-controlled, dose-escalation study to evaluate the pharmacologic effect of CP-690,550 in patients with psoriasis. *J. Invest. Dermatol.* **129**, 2299-2302 (2009).

125. Kremer, J.M. et al. The safety and efficacy of a JAK inhibitor in patients with active rheumatoid arthritis: Results of a double-blind, placebo-controlled phase IIa trial of three dosage levels of CP-690,550 versus placebo. *Arthritis Rheum.* **60**, 1895-1905 (2009).
126. Steinman, R.M. & Idoyaga, J. Features of the dendritic cell lineage. *Immunol. Rev.* **234**, 5-17 (2010).
127. Iwasaki, A. & Medzhitov, R. Toll-like receptor control of the adaptive immune responses. *Nat. Immunol.* **5**, 987-95 (2004).
128. Münz, C., Steinman, R.M. & Fujii, S. Dendritic cell maturation by innate lymphocytes: coordinated stimulation of innate and adaptive immunity. *J. Exp. Med.* **202**, 203-7 (2005).
129. Gilliet, M., Cao, W. & Liu, Y.J. Plasmacytoid dendritic cells: sensing nucleic acids in viral infection and autoimmune diseases. *Nat. Rev. Immunol.* **8**, 594-606 (2008).
130. Serbina, N.V., Jia, T., Hohl, T.M. & Pamer, E.G. Monocyte-mediated defense against microbial pathogens. *Annu. Rev. Immunol.* **26**, 421-52 (2008).
131. Heath, W.R. & Carbone, F.R. Dendritic cell subsets in primary and secondary T cell responses at body surfaces. *Nat. Immunol.* **10**, 1237-44 (2009).

128. Robbins, S.H. et al. Novel insights into the relationships between dendritic cell subsets in human and mouse revealed by genome-wide expression profiling. *Genome Biol.* **9**, R17 (2008).

Figure legends.**Figure 1: Dendritic cells stimulate and instruct T cells where to go and what to do.**

Following thymic selection, naïve T cells recognize their antigen in the context of MHC molecules presented by DCs. In the steady state, i.e. in the absence of inflammation, DCs can induce tolerance when they capture self and environmental antigens. Mechanisms that confer T cell tolerance are diverse and include T cell deletion as well as the generation of regulatory T cells. Upon infection or other causes of DC maturation, DCs enhance their antigen processing and presenting capacities and upregulate cytokines and co-stimulatory molecules. Mature DCs can induce different types of CD4⁺ T cells, such as Th1, Th2, and Th17. In addition to these interactions with T cells in lymphoid organs, DCs activate innate immune cells, which can further assist in the differentiation of T helper cell subsets.

Figure 2: DC-targeting therapies. DC-targeting therapies for autoimmune diseases including MS aim at (i) supporting the tolerogenic potential of DCs, e.g. through targeting of disease relevant antigens to antigen-uptake receptors such as DEC-205, by (ii) inhibiting DC development through blockade of DC-differentiating cytokines. Alternative strategies aim at (iii) limiting immunogenic DC functions such as production of inflammatory and T cell instructing cytokines or at (iv) reducing costimulatory signals required for effector T cell generation and activation. Most strategies involve the use of monoclonal antibodies (mAb) which target selective molecules expressed by DCs.

Key points

- Dendritic cells (DCs) are central in inducing immunity and in regulating immune tolerance.
- DC-targeting therapies for autoimmune diseases aim at inhibiting immunogenic DC functions or at supporting their tolerogenic potential. Most strategies involve the use of monoclonal antibodies which target selective molecules expressed by DCs.
- The DC lineage of both mouse and man is composed of at least four distinct subsets. The function of these subsets and their T cell mobilizing potential in intact human lymphoid tissue and during chronic inflammation, as seen in MS, is still incompletely understood.
- A number of DC-based therapies have been tested in EAE and other animal models and a few of them are currently being investigated or are already approved in other human autoimmune diseases, such as rheumatoid arthritis.

Review criteria

The PubMed database was searched for papers published up to May 2010 using the terms "multiple sclerosis dendritic cells", "multiple sclerosis treatment", "autoimmune dendritic cells". Articles were also identified through searches of the authors' files.

Author information**Manuel Comabella**

Manuel Comabella heads a research lab at the Multiple Sclerosis Centre of Catalonia, Vall d'Hebron University Hospital, Barcelona, Spain.

Xavier Montalban

Xavier Montalban is the Director of the Multiple Sclerosis Centre of Catalonia, Vall d'Hebron University Hospital, Barcelona, Spain.

Christian Münz

Christian Münz is Professor and Co-director of the Institute of Experimental Immunology at the University of Zürich, Switzerland. He received his Ph.D. in immunology and biochemistry from the University of Tübingen, Germany, and his postdoctoral training from the Rockefeller University in New York, USA, where he also became an Assistant Professor and Head of Laboratory. His research group studies innate and adaptive immune control of the persistent and oncogenic Epstein–Barr virus.

Jan D. Lünemann

Jan D. Lünemann is Assistant Professor at the Institute of Experimental Immunology at the University Hospital of Zürich, Switzerland. He received his M.D. and neurology residency training at the Charité Hospital, Humboldt University (Berlin, Germany) and his postdoctoral training at the National Institutes of Health (Bethesda, USA) and the Rockefeller University (New York, USA). His laboratory studies pathomechanisms and therapeutic strategies in neuroimmunological diseases such as multiple sclerosis.

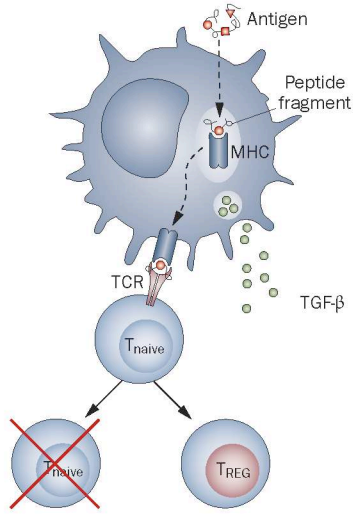
Box 1: Dendritic cell subsets in MHC class I versus class II antigen presentation

Dendritic cells (DCs) initiate cell-extrinsic immune responses in higher eukaryotes¹. They sense pathogen invasion and excessive cell death via pathogen associated molecular pattern (PAMP) receptors, process antigens for presentation on major histocompatibility complex (MHC) molecules to T cells and communicate information about the conditions, under which they have encountered the antigen, to innate and adaptive lymphocytes in secondary lymphoid tissues²⁻³. The dendritic cell lineage of both mouse and man is, however, composed of at least four distinct subsets. These are plasmacytoid, migratory myeloid, secondary lymphoid tissue resident myeloid and inflammatory DCs¹. Plasmacytoid DC are the main type I interferon producing cells during immune responses⁴. Inflammatory DCs develop from monocytes at sites of inflammation⁵. Migratory DCs transfer antigen from the periphery to secondary lymphoid tissues and communicate to lymphocytes the conditions, under which they have encountered the antigen via cytokines and co-stimulatory molecules, whose up-regulation, together with enhanced antigen processing and MHC presentation, is collectively called maturation¹. Prototypic migratory DCs are Langerhans cells of the epidermis. Resident DCs in secondary lymphoid organs are similar to migratory DCs, but might differ in MHC class I versus MHC class II antigen presentation from them⁶. It has been proposed that migratory DCs present antigens preferentially via MHC class II molecules for CD4⁺ T cell stimulation, whereas resident DCs more efficiently cross-present antigens in secondary lymphoid tissues on MHC class I molecules to CD8⁺ T cells after CD40/CD40L mediated maturation by activated CD4⁺ T cells. In mice these efficiently cross-presenting DCs can be identified by their CD8 expression, whereas in humans the BDCA3⁺ DC subset has been proposed for this function⁷. Therefore, it is important to keep in mind that autoantigens could be presented with different efficacy by distinct DC subsets for autoreactive CD4⁺ and CD8⁺ T cell stimulation during MS, and that any tolerizing strategies might have to target the respective subsets to modulate CD4⁺ or CD8⁺ T cell mediated autoimmunity.

References

1. Steinman, R.M. & Idoyaga, J. Features of the dendritic cell lineage. *Immunol Rev* **234**, 5-17 (2010).
2. Iwasaki, A. & Medzhitov, R. Toll-like receptor control of the adaptive immune responses. *Nat Immunol* **5**, 987-95 (2004).
3. Münz, C., Steinman, R.M. & Fujii, S. Dendritic cell maturation by innate lymphocytes: coordinated stimulation of innate and adaptive immunity. *J Exp Med* **202**, 203-7 (2005).
4. Gilliet, M., Cao, W. & Liu, Y.J. Plasmacytoid dendritic cells: sensing nucleic acids in viral infection and autoimmune diseases. *Nat Rev Immunol* **8**, 594-606 (2008).
5. Serbina, N.V., Jia, T., Hohl, T.M. & Pamer, E.G. Monocyte-mediated defense against microbial pathogens. *Annu Rev Immunol* **26**, 421-52 (2008).
6. Heath, W.R. & Carbone, F.R. Dendritic cell subsets in primary and secondary T cell responses at body surfaces. *Nat Immunol* **10**, 1237-44 (2009).
7. Robbins, S.H. et al. Novel insights into the relationships between dendritic cell subsets in human and mouse revealed by genome-wide expression profiling. *Genome Biol* **9**, R17 (2008).

Immature dendritic cell



Mature dendritic cell

