

1 Title page

2
3 Denise Felber Dietrich¹, Ursula Ackermann-Liebrich¹, Christian Schindler¹, Jean-Claude
4 Barthélémy², Otto Brändli³, Diane R Gold⁴, Bruno Knöpfli⁵, Nicole M Probst-Hensch⁶,
5
6 Frédéric Roche², Jean-Marie Tschopp⁷, Arnold von Eckardstein⁸, Jean-Michel Gaspoz⁹, and
7
8
9
10
11
12
13
14
15
16
17
18
19
20
21
22
23
24
25
26
27
28
29
30
31
32
33
34
35
36
37
38
39
40
41
42
43
44
45
46
47
48
49
50
51
52
53
54
55
56
57
58
59
60
61
62
63
64
65

Effect of physical activity on heart rate variability in normal weight, overweight and obese subjects: results from the SAPALDIA study

Institute of Social and Preventive Medicine of the University of Basel

¹ Institute of Social and Preventive Medicine, University of Basel, Steinengraben 49, 4051
Basel, Switzerland

² Laboratoire de Physiologie Clinique et de l'Exercice, Université Jean Monnet, CHU Nord –
Niveau 6, 42055 Saint-Etienne cedex 2, France

³ Zürcher Höhenklinik, 8636 Faltigberg-Wald, Switzerland

⁴ Harvard Medical School, Brigham and Women's Hospital, 181 Longwood Avenue, Boston,
MA 02115-5804, USA

4 ⁵ Alpine Kinderklinik, Scalettastrasse 5, 7270 Davos-Platz, Switzerland
5

6 ⁶ Molecular Epidemiology/Cancer Registry, University of Zürich, Vogelsangstrasse 10, 8091
7
8 Zürich, Switzerland
9

10
11 ⁷ Centre Valaisan de Pneumologie, 3963 Montana, Switzerland
12

13
14 ⁸ Institute for Clinical Chemistry, University Hospital Zürich, Rämistrasse 100, 8091 Zürich,
15
16 Switzerland
17

18
19 ⁹ Department of Community Medicine and Primary Care, University Hospitals, 24 rue
20
21 Micheli-du-Crest, 1211 Genève 4, Switzerland
22

23
24
25
26
27 Correspondence: Denise Felber Dietrich, Institute of Social and Preventive Medicine,
28
29 University of Basel, Steinengraben 49, 4051 Basel, Switzerland; Tel: +41 61 267 60 66; fax:
30
31 +41 61 267 61 90. E-mail address: denise.felber[at]unibas.ch
32
33
34
35
36
37
38
39
40
41
42
43
44
45
46
47
48
49
50
51
52
53
54
55
56
57
58
59
60
61
62
63

Abstract

Many studies have demonstrated an association of both a sedentary lifestyle and a high body mass index (BMI) with greater risk for cardiovascular disease. Within the prospective SAPALDIA cohort (Swiss cohort study on Air Pollution and Lung Diseases in Adults), we investigated whether regular exercise was protective against reduced heart rate variability (HRV), a clinically relevant predictor of cardiovascular morbidity and mortality, and whether adverse effects of obesity and weight gain on HRV were modified by regular exercise.

24-hour electrocardiograms were recorded in 1712 randomly selected SAPALDIA participants aged ≥ 50 , for whom BMI was assessed in 1991 and 2001-3. Other examinations included an interview investigating health status (especially respiratory and cardiovascular health and health relevant behaviours including physical activity) and measurements of blood pressure, body height and weight. The association between regular physical activity and HRV and interactions with BMI and BMI change was assessed in multivariable linear regression analyses.

Compared to sedentary obese subjects, SDNN (standard deviation of all RR intervals) was 14% (95% CI: 8-20%) higher in sedentary normal weight subjects; 19% (CI: 12-27%) higher in normal weight subjects exercising regularly ≥ 2 h/week; and 19% (CI:11-28%) higher in obese subjects exercising regularly ≥ 2 h/week.

Compared with sedentary subjects who gained weight, those who gained weight but did exercise regularly had a 13% higher SDNN (CI: 7-20%).

Regular physical exercise has strong beneficial effects on cardiac autonomic nervous function and thus appears to offset the negative effect of obesity on HRV.

5 **Key words**

6 heart rate variability; autonomic nervous system; body mass index; obesity; body weight

7
8 change; exercise
9
10
11
12
13
14
15
16
17
18
19
20
21
22
23
24
25
26
27
28
29
30
31
32
33
34
35
36
37
38
39
40
41
42
43
44
45
46
47
48
49
50
51
52
53
54
55
56
57
58
59
60
61
62
63
64
65

2
3
4 **Introduction**

5
6 Obesity and weight gain are imposing a growing threat to world health, as in many
7 countries 20-30% of adults are categorized as clinically obese, and their number is still
8 increasing (World Health Organization 1999; World Health Organization 2002). Many
9 studies have demonstrated an association of both a high body mass index (BMI) and a
10 sedentary lifestyle with greater risk for cardiovascular disease (Wei et al. 1999; Fang et al.
11 2003).

12
13
14
15
16
17
18
19
20
21 In the SAPALDIA (Swiss cohort study on Air Pollution and Lung Diseases in Adults)
22 study of a large sample of Swiss adults, we confirmed the relation of reduced heart rate
23 variability (HRV) with increased BMI (Felber Dietrich et al. 2006). Heart rate variability
24
25 10 refers to the beat-to-beat variation in heart rate and is a marker of cardiac autonomic control
26
27
28
29 (Kleiger et al. 2005). Reduced HRV predicts increased risk of cardiovascular disease and
30 mortality in longitudinal studies (Kleiger et al. 1987; Bigger et al. 1993). Other studies have
31 also noted that increased BMI is associated with reduced HRV, which has been attributed to
32
33
34
35
36
37 15 decreased adreno-receptor responsiveness, withdrawal of parasympathetic tone and/or
38
39 increased sympathetic activity (Ramaekers et al. 1998; Fraley et al. 2005).

40
41
42 Within the prospective SAPALDIA cohort, we investigated whether regular exercise
43 was associated with improved HRV, and whether adverse effects of obesity and weight gain
44 on HRV were modified by regular exercise.
45
46
47

48
49
50 20
51
52 **Methods**

53
54
55 This study is part of the SAPALDIA cohort study, which was primarily designed to
56 assess health effects from long-term exposure to air pollutants in the Swiss adult population.
57
58
59
60 Details of its design and objectives have been reported elsewhere (Martin et al. 1997;
61
62
63

1
2
3
4 Ackermann-Liebrich et al. 2005). In brief, a random sample of the Swiss population was
5
6 recruited in 1991 from eight areas featuring distinct geographical and environmental
7
8 conditions. 9651 participants received intensive health examinations and a detailed health
9
10 interview in 1991. In 2001-2003, we were able to re-examine 8047 of the original participants
11
12 and to assess HRV in a random selection (n=1846: 955 women, 891 men) of the 4417
13
14 participants aged ≥ 50 years by 24-hour ECGs. Exclusion criteria were general or spinal
15
16 anaesthesia within eight days prior to the ambulatory ECG recording (n=5), having had a
17
18 myocardial infarction within 3 months prior to the examination (n=2), and taking digitalis
19
20 (n=6); nobody had an artificial pacemaker. Exclusion of recordings showing atrial fibrillation
21
22 (n=12), recordings of < 18 h (recommendations of the Task Force of the European Society of
23
24 Cardiology and the North American Society of Pacing and Electrophysiology (North
25
26 American Society of Pacing and Electrophysiology 1996)) (n=73), and recordings of
27
28 insufficient quality (n=6) left 1742 datasets. We had complete information on 1718 subjects
29
30 for analysis of HRV involving BMI and exercise and on 1712 subjects for analysis involving
31
32 weight gain from baseline to follow-up. For statistical reasons, 15 subjects being underweight
33
34 at follow-up were excluded from analyses where BMI was used as a categorical variable,
35
36 leaving 1703 records for analyses.
37
38
39
40
41
42

43 **HRV measurements and analyses**

44
45
46 For the Holter recording, digital devices (Aria, Del Mar Medical Systems, Irvine, CA,
47
48 USA) with a frequency response of 0.05–40Hz and a resolution of 128 samples/s were used.
49
50 Three leads (V_1 , altered V_3 with the electrode on the left midclavicular line on the lowest rib,
51
52 and altered V_5 with the electrode on the left anterior axillary line on the lowest rib) were
53
54 recorded over 24 hours. The mean duration of the Holter recordings was 22.3 (SD 2.1) hours.
55
56
57
58
59
60
61
62
63

1
2
3
4 All recordings were scanned through a StrataScan 563 (Del Mar) and interpreted using
5
6 the interactive method, with a final visual check on the full disclosure. The length of each RR
7
8 interval was manually validated during this step. Resampling was made at 4Hz. Spectral
9
10 analysis was performed by the fast Fourier transform method. Only normal-to-normal
11
12 intervals were used, with intervals excluded due to ectopy or artefacts being replaced by
13
14 holding the previous coupling interval level throughout the time interval to the next valid
15
16 coupling interval. The standard deviation of all normal RR (NN) intervals (SDNN), which is a
17
18 summary measure of HRV and the following frequency domain variables have been
19
20 calculated: Total power (TP) (≤ 0.40 Hz), LF power (0.04–0.15Hz), high frequency (HF)
21
22 power (0.15–0.40Hz) and the LF/HF ratio. HF power is an index of the parasympathetic
23
24 modulation of heart rate, whereas LF power is an index of the combined parasympathetic and
25
26 sympathetic modulation of heart rate. LF/HF represents the sympatho-vagal balance (North
27
28 American Society of Pacing and Electrophysiology 1996; Sztajzel 2004).
29
30
31
32
33
34

35
36 In order to avoid a biased result due to methacholine challenge, which was part of the
37
38 SAPALDIA lung function testing and which, for practical reasons, was performed before the
39
40 Holter recording, we excluded the first two hours of all recordings.
41
42

43
44 Holter recordings were made between August 2001 and March 2003. Recorders were
45
46 placed on participants having given consent after a detailed health interview. Participants were
47
48 asked to follow their regular daily routine and to complete a time-activity diary during the
49
50 recording period.
51

52 **Other measurements**

53
54
55 Body height and weight were measured with participants not wearing any shoes or
56
57 coats and body mass index was calculated as weight [kg] divided by height squared [m^2].
58

59
60 Four BMI groups were distinguished according to the WHO definitions (World Health
61
62
63

1
2
3
4 Organization 1999): underweight ($< 18.5 \text{ kg/m}^2$), normal weight ($18.5\text{-}24.9 \text{ kg/m}^2$),
5
6 overweight ($25.0\text{-}29.9 \text{ kg/m}^2$) and obese ($\geq 30 \text{ kg/m}^2$). In the 1991 cross-sectional study, body
7
8 weight was asked. Weight gain was defined as being in a higher BMI category in the follow-
9
10 up study compared to the first survey.

11
12
13 5 The amount of physical activity (Question: 'How many hours a week do you usually
14
15 exercise such that you get out of breath or sweat?') (The European Community Respiratory
16
17 Health Survey II 2000) and data on smoking, education, diabetes, level of daytime sleepiness
18
19 (Epworth sleepiness scale) (Johns 1991; Johns 1993) and current medications status were
20
21 (Epworth sleepiness scale) (Johns 1991; Johns 1993) and current medications status were
22
23 assessed during a standardized interview which was led by trained fieldworkers. The
24
25 10 participants were divided into tertiles of exercise: no regular physical exercise, $\frac{1}{2}$ to 1 hour
26
27 and ≥ 2 hours of regular physical exercise.

28
29
30 Blood pressure was measured twice at rest in the sitting position on the left upper arm
31
32 by an automatic device (705CP, OMRON, Tokyo, Japan) according to WHO
33
34 recommendations (World Health Organization 1994). Blood pressure values used in the
35
36 15 regression model were obtained by averaging the two measurements. Having high blood
37
38 pressure was defined as either having a systolic blood pressure $\geq 140 \text{ mmHg}$, or a diastolic
39
40 blood pressure $\geq 90 \text{ mmHg}$, or having answered yes to the question "Do you have the
41
42 following condition: Hypertension?".
43
44

45
46 The highest degree of education was used as a proxy for social position.

47
48
49 20 Blood samples were taken from the subjects and known cardiovascular risk factors
50
51 have been determined by the Institute for Clinical Chemistry of the University Hospital
52
53 Zürich: A Hitachi Modular Autoanalyser (Rotkreuz, Switzerland) and assays from Roche
54
55 Diagnostics (Mannheim, Germany) have been used to measure serum levels of uric acid,
56
57 triglycerides and total cholesterol (all enzymatic tests). High sensitive C-reactive protein
58
59
60
61
62
63

(CRP) was measured using a latex-enhanced immunoturbidimetric assay. High-density lipoprotein cholesterol (HDL) was measured with a homogenous assay (Roche diagnostics, Mannheim, Germany) using Roche Cobas Integra (Rotkreuz, Switzerland). HDL values were only used if the participants had a triglyceride level of 9.4 mmol/l or lower. As additional atherogenic markers, the difference between total cholesterol and HDL (non-HDL-cholesterol) and the ratio between total cholesterol and HDL were calculated.

Ethical approval for the study was given by the central Ethics Committee of the Swiss Academy of Medical Sciences and the Cantonal Ethics Committees for each of the eight examination areas and subjects signed an informed consent at the examination.

10 **Statistical methods**

Because an initial inspection suggested that the distribution of the residuals was skewed, the HRV-values were log-transformed for further analysis and the results are presented as percent difference between the exposure groups as well as geometric means.

To calculate the effect of BMI and physical activity on HRV, we used a multivariable regression model adjusting for study site, sex, age and age squared, education, self-reported diabetes, hypertension, smoking status and beta-blocker intake in the previous 30 days.

We investigated modification of the effect of BMI by physical activity by introducing according interactions terms between exercise and BMI categories into the multivariable regression model.

20 Sensitivity analyses screening for additional potential confounders (Epworth sleepiness score >10 vs ≤ 6 ; diuretics, sympathomimetics, calcium-channel blockers and angiotensin converting enzyme inhibitor intake during the previous 30 days; non-HDL-cholesterol, uric acid and high sensitive CRP levels) were carried out.

2
3
4 Statistical analyses were performed using Stata 9.2 (Stata corporation, College Station,
5
6 Texas).

7
8
9
10
11 **Results**

12
13
14 5 Mean age of the population was 60 years (50-73 years). Baseline characteristics of the
15
16 1703 study participants by exercise category are given in Table 1. 37% of the study
17
18 population were normal weight, 43% were overweight, and 20% obese, with a homogeneous
19
20 distribution across exercise categories. Less than 1% of the study participants were morbidly
21
22 obese. Between the first and the second survey, 35% had gained weight so that they changed
23
24 into a higher BMI category. There was a higher proportion of women and current smokers in
25
26 10 the normal weight group, but fewer subjects with diabetes or subjects taking beta-blockers,
27
28 the normal weight group, but fewer subjects with diabetes or subjects taking beta-blockers,
29
30 diuretics or angiotensin converting enzyme (ACE) inhibitor. In that same group, subjects had
31
32 lower average heart rate and systolic and diastolic blood pressure, and they were on average
33
34 better educated and slightly younger; they also had lower levels of non-HDL-cholesterol, uric
35
36 acid or C-reactive protein.
37
38 15

39
40 *Insert Table 1.*

41
42
43 Table 2 exhibits the adjusted means of HRV parameters for different BMI and
44
45 exercise categories. Within each BMI category, subjects regularly exercising ≥ 2 hours per
46
47 week had higher HRV than sedentary subjects. Even obese subjects exercising ≥ 2 hours had
48
49 a higher HRV than sedentary normal weight subjects.
50
51 20

52
53 *Insert Table 2.*

54
55 Using a cubic model for BMI (continuous), subjects who exercise regularly had higher
56
57 SDNN than their sedentary peers (online supplementary figure 1 showing curves of adjusted
58
59

geometric means for the three exercise categories). As can be deduced from these curves, SDNN in physically active subjects (≥ 2 hours of exercise per week) did not depend on BMI.

Figure 1 compares SDNN for obese subjects not exercising (reference group) to other BMI and exercise categories. Compared to obese subjects not exercising regularly, overweight subjects not exercising had an 11% [95% confidence interval (95% CI: 5 to 17%)] higher SDNN and normal weight subjects not exercising had a 14% (95% CI: 8 to 20%) higher SDNN.

Regardless of weight, the improvement in SDNN was greatest for those who exercised regularly ≥ 2 hours per week. Compared to obese subjects not exercising, among those who exercised regularly, SDNN was 19% (95% CI: 12 to 27%) higher in normal weight subjects, 18% (95% CI: 12 to 26%) higher in overweight subjects, and 19% (95% CI: 11 to 28%) higher in obese subjects. The difference in SDNN within each BMI category between subjects exercising regularly ≥ 2 hours and sedentary subjects was highest in obese subjects. Regular exercise modified the relation of obesity with SDNN (95% CI: -0.214 to -0.036 for the difference in the effect of obesity compared to normal weight between subjects exercising regularly (i.e., ≥ 2 hours) and subjects with a sedentary lifestyle) (online supplementary Table 1).

Insert Figure 1.

Compared to sedentary obese subjects, obese subjects exercising regularly also had 29% (95% CI: 9 to 53%) higher total power, 29% (95% CI: 0 to 66%) higher HF, 27% (95% CI: 4 to 54%) higher LF (Figure 2) and a 2% (95% CI: -17 to 16%) lower LF/HF.

Insert Figure 2.

Next, we analysed the influence of weight gain between the first survey and the follow-up survey on HRV. Weight gain is defined as changing into a higher BMI category—

e.g., becoming overweight or obese. Compared with subjects who gained weight and did not exercise regularly, those who gained weight but did exercise regularly had a 13% higher SDNN (95% CI: 7 to 20%), 16% higher total power (95% CI: 2 to 32%), 25% higher HF (95% CI: 3 to 52%), 24% higher LF (95% CI: 6 to 44%) and a 1% (95% CI: -14 to 12%) lower LF/HF (Figure 3).

Insert Figure 3.

These associations were not due to a reduction in heart rate with exercise as there was no evidence for a change when heart rate was introduced into the models (Table 3). Mean 24-hour heart rate in physically active was 74 bpm (95% CI: 72 to 76 bpm) as opposed to 76 bpm (95% CI: 74 to 77 bpm) in inactive obese.

Sensitivity analyses

We tested the robustness of the results by including additional potential confounders into the model. Table 3 shows that daytime sleepiness, symptoms of chronic bronchitis, heart rate, cardioactive medication intake or cardiovascular risk markers in the blood did not sizeably change the effect estimates.

We also evaluated whether daytime activity was responsible for HRV differences between populations with higher levels of exercise compared to populations with low levels of exercise. Although the estimates for the sleeping periods at night were different to the ones for the 24-hour periods, the relation between the different groups was similar to the one of the 24-hour periods, which include active periods (online supplementary Table 2).

Insert Table 3.

Discussion

This study shows that middle-aged and elderly obese subjects who were regularly physically active had a higher HRV than their sedentary peers even after taking into account the effects of sex, age, study site, education, diabetes, hypertension, beta-blocker intake and smoking status. In addition, the improvement in HRV associated with exercise was similar for obese and normal weight subjects. Thus, our data suggest that exercise improves autonomic function as measured by HRV. Analogously to the recently published results of Sui et al. of their study on cardiorespiratory fitness and adiposity as mortality predictors in older adults (Sui et al. 2007), we found that lower autonomic activity among inactive subjects was related to body fatness: inactive subjects who were normal weight had somewhat lower HRV than normal weight exercising subjects, but higher than inactive obese subjects.

Several potential sources of bias were considered in this study. Smoking, diabetes or hypertension, all known to have an impact on HRV (Felber Dietrich et al. 2006), were controlled for in the baseline analysis. Obesity is also associated with obstructive sleep apnoea syndrome (OSAS) (Resta et al. 2001), which in turn, has a strong influence on the autonomic nervous system (Narkiewicz and Somers 2003). Even more, obese patients with OSAS who loose weight experience an improvement in the severity of OSAS, as well as in blood pressure and cardiac autonomic regulation (Kansanen et al. 1998). We addressed this issue by additionally controlling for daytime sleepiness in sensitivity analyses but found no indication of such confounding. Furthermore, we were able to demonstrate that the observed differences in HRV between groups were not caused by differences in health status represented by symptoms of chronic bronchitis, intake of cardioactive medication or cardiovascular risk markers in the blood.

Our findings are consistent with results from intervention trials comparing the beneficial effects of exercise and weight loss. Oberbach and colleagues have found that

1
2
3
4 increases in adiponectin levels after four weeks of physical training disproportionately
5
6 exceeded the beneficial effects of reduced percent body fat and increased fitness level
7
8 (Oberbach et al. 2006). In other studies, three-month aerobic exercise intervention in
9
10 overweight and obese subjects increased tissue-type plasminogen activator without evidence
11
12 of changes in body mass or adiposity (Van Guilder et al. 2005), and 12 weeks of aerobic
13
14 training improved insulin sensitivity in overweight and obese girls without change in body
15
16 weight, percent body fat and concentrations of inflammatory markers (Nassis et al. 2005).
17
18

19
20 There are several limitations of this study. One part of the study was cross-sectional in
21
22 design - and hence causality cannot be inferred from existing associations. However, we were
23
24 able to assess weight gain prospectively in the whole population and the fact that weight gain
25
26 is showing the same effect strengthens the argument for a causal relationship.
27
28

29
30 The data on physical activity were self-reported, as in most epidemiological studies
31
32 (US Department of Health and Human Services 1996). Over-reporting of physical activity,
33
34 the only conceivable form of reporting bias in this context, would have led to an
35
36 underestimation of the effect size. Nonetheless, the physical activity questionnaire that we
37
38 used has been previously validated (Washburn et al. 1990) and used in other epidemiological
39
40 studies. The comparative study concluded that self-reported sweat hours are suitable for
41
42 distinguishing active from inactive subjects in epidemiological surveys. Our three activity
43
44 categories allowed for such a distinction. In the European Community Respiratory Health
45
46 Survey physical activity level assessed by the same tool was predictive of bronchial
47
48 hyperresponsiveness (Shaaban et al. 2007). Other studies have used other exercise categories;
49
50 e.g. the Nurses Health Study used four categories from zero, moderate, to vigorous exercise,
51
52 to ≥ 4 hours/week of vigorous exercise, showing that women who exercised ≥ 4 hours/week
53
54 had a reduced risk for sudden cardiac death compared to those not being physically active
55
56
57
58
59
60
61
62
63
64
65

2
3
4 of light-to-moderate activity are associated with lower coronary heart disease rates (Lee et al.
5
6 2001), which puts more emphasis on our results.

7
8
9 A given BMI may not correspond to the same degree of fatness in different people. In
10
11 addition, the percentage of body fat mass is higher in women than in men for equivalent BMI
12
13 5 (Ross et al. 1994). However, different studies have shown that BMI does sufficiently coincide
14
15 with the degree of body fatness when adjusting for age and sex (Gallagher et al. 1996;
16
17 Movsesyan et al. 2003). Moreover, the discriminatory power for body fat and lean mass
18
19 increases with the value of BMI and is high in obese people for which our results are most
20
21 pronounced (Romero-Corral et al. 2006).
22
23
24

25 10 A major strength of the present study was the large number of participants.
26
27 Additionally, detailed information was available for numerous cardiovascular risk factors,
28
29 allowing for control of potential confounders.
30
31

32
33 In conclusion, our results suggest that regular physical exercise has strong beneficial
34
35 effects on cardiac autonomic nervous function, a clinically relevant predictor of
36
37 15 cardiovascular morbidity and mortality and that exercise may offset the negative effect of
38
39 obesity.
40
41
42
43
44
45
46
47
48
49
50
51
52
53
54
55
56
57
58
59
60
61
62
63

Funding

The Swiss National Science Foundation (4026-28099, 3347CO-108796, 3247BO-104283, 3247BO-104288, 3247BO-104284, 32-65896.01, 32-59302.99, 32-52720.97, 32-4253.94); the Federal Office for Forest, Environment and Landscape; the Federal Office of Public Health; the Federal Office of Roads and Transport; the canton's government of Aargau, Basel-Stadt, Basel-Land, Geneva, Luzern, Ticino, Zurich; the Swiss Lung League; the canton's Lung League of Basel Stadt/ Basel Landschaft, Geneva, Ticino and Zurich and the National Institute of Environmental Health Sciences (US) (2 P01 ES009825 to DRG, R01 ES011636 to JS).

Acknowledgements

The study could not have been done without the help of the study participants, technical and administrative support and the medical teams and field workers at the local study sites.

Local fieldworkers : Aarau: M Broglie, M Bünter, D Gashi, Basel: R Armbruster, T Damm, U Egermann, M Gut, L Maier, A Vögelin, L Walter, Davos: D Jud, N Lutz, Geneva: M Ares, M Bennour, B Galobardes, E Namer, Lugano: B Baumberger, S Boccia Soldati, E Gehrig-Van Essen, S Ronchetto, Montana: C Bonvin, C Burrus, Payerne: S Blanc, AV Ebinger, ML Fragnière, J Jordan, Wald: R Gimmi, N Kourkoulos, U Schafroth.

Administrative staff: N Bauer, D Baehler, C Gabriel, R Gutknecht-Nilly.

Holter system technicians: M Victoire, D Maudoux.

Mathematical HRV engineering: V Pichot.

Appendix

SAPALDIA Team

Study directorate: T Rochat (p), U Ackermann-Liebrich (e), JM Gaspoz (c), P Leuenberger (p), LJS Liu (exp), NM Probst Hensch (e/g), C Schindler (s).

Scientific team: JC Barthélémy (c), W Berger (g), R Bettschart (p), A Bircher (a), G Bolognini (p), O Brändli (p), M Brutsche (p), L Burdet (p), M Frey (p), MW Gerbase (p), D Gold (e/c/p), W Karrer (p), R Keller (p), B Knöpfli (p), N Künzli (e/exp), U Neu (exp), L Nicod (p), M Pons (p), E Russi (p), P Schmid-Grendelmeyer (a), J Schwartz (e), P Straehl (exp), JM Tschopp (p), A von Eckardstein (cc), JP Zellweger (p), E Zemp Stutz (e).

Scientific team at coordinating centers: PO Bridevaux (p), I Curjuric (e), SH Downs (e/s), D Felber Dietrich (c), A Gemperli (s), D Keidel (s), M Imboden (g), P Staedele-Kessler (s), GA Thun (g)

(a) allergology, (c) cardiology, (cc) clinical chemistry, (e) epidemiology, (exp) exposure, (g) genetic and molecular biology, (m) meteorology, (p) pneumology, (s) statistics

References

- Ackermann-Lieblich U, Kuna-Dibbert B, Probst-Hensch NM et al (2005) Follow-up of the Swiss Cohort Study on Air Pollution and Lung Diseases in Adults (SAPALDIA 2) 1991-2003: Methods and characterization of participants. *Soz Praventivmed* 50: 1-19
- Bigger JT, Jr., Fleiss JL, Rolnitzky LM et al (1993) Frequency domain measures of heart period variability to assess risk late after myocardial infarction. *J Am Coll Cardiol* 21(3): 729-36
- Fang J, Wylie-Rosett J, Cohen HW et al (2003) Exercise, body mass index, caloric intake, and cardiovascular mortality. *Am J Prev Med* 25(4): 283-9
- Felber Dietrich D, Schindler C, Schwartz J et al (2006) Heart rate variability in an ageing population and its association with lifestyle and cardiovascular risk factors: results of the SAPALDIA study. *Europace* 8(7): 521-9
- Fraley MA, Birchem JA, Senkottaiyan N et al (2005) Obesity and the electrocardiogram. *Obes Rev* 6(4): 275-81
- Gallagher D, Visser M, Sepulveda D et al (1996) How useful is body mass index for comparison of body fatness across age, sex, and ethnic groups? *Am J Epidemiol* 143(3): 228-39
- Johns MW (1991) A new method for measuring daytime sleepiness: the Epworth sleepiness scale. *Sleep* 14(6): 540-5
- Johns MW (1993) Daytime sleepiness, snoring, and obstructive sleep apnea. The Epworth Sleepiness Scale. *Chest* 103(1): 30-6
- Kansanen M, Vanninen E, Tuunainen A et al (1998) The effect of a very low-calorie diet-induced weight loss on the severity of obstructive sleep apnoea and autonomic nervous function in obese patients with obstructive sleep apnoea syndrome. *Clin Physiol* 18(4): 377-85
- Kleiger RE, Miller JP, Bigger JT, Jr. et al (1987) Decreased heart rate variability and its association with increased mortality after acute myocardial infarction. *Am J Cardiol* 59(4): 256-62
- Kleiger RE, Stein PK and Bigger JT, Jr. (2005) Heart Rate Variability: Measurement and Clinical Utility. *The Annals of Noninvasive Electrocardiography* 10(1): 88-101
- Lee IM, Rexrode KM, Cook NR et al (2001) Physical activity and coronary heart disease in women: is "no pain, no gain" passe? *Jama* 285(11): 1447-54
- Martin BW, Ackermann-Lieblich U, Leuenberger P et al (1997) SAPALDIA: methods and participation in the cross-sectional part of the Swiss Study on Air Pollution and Lung Diseases in Adults. *Soz Praventivmed* 42(2): 67-84
- Movsesyan L, Tanko LB, Larsen PJ et al (2003) Variations in percentage of body fat within different BMI groups in young, middle-aged and old women. *Clin Physiol Funct Imaging* 23(3): 130-3
- Narkiewicz K and Somers VK (2003) Sympathetic nerve activity in obstructive sleep apnoea. *Acta Physiol Scand* 177(3): 385-90
- Nassis GP, Papantakou K, Skenderi K et al (2005) Aerobic exercise training improves insulin sensitivity without changes in body weight, body fat, adiponectin, and inflammatory markers in overweight and obese girls. *Metabolism* 54(11): 1472-9
- North American Society of Pacing and Electrophysiology (1996) Heart rate variability: standards of measurement, physiological interpretation and clinical use. Task Force of the European Society of Cardiology and the North American Society of Pacing and Electrophysiology. *Circulation* 93(5): 1043-65

References

- Oberbach A, Tonjes A, Kloting N et al (2006) Effect of a 4 week physical training program on plasma concentrations of inflammatory markers in patients with abnormal glucose tolerance. *Eur J Endocrinol* 154(4): 577-85
- Ramaekers D, Ector H, Aubert AE et al (1998) Heart rate variability and heart rate in healthy volunteers. Is the female autonomic nervous system cardioprotective? *Eur Heart J* 19(9): 1334-41
- Resta O, Foschino-Barbaro MP, Legari G et al (2001) Sleep-related breathing disorders, loud snoring and excessive daytime sleepiness in obese subjects. *Int J Obes Relat Metab Disord* 25(5): 669-75
- Romero-Corral A, Montori VM, Somers VK et al (2006) Association of bodyweight with total mortality and with cardiovascular events in coronary artery disease: a systematic review of cohort studies. *Lancet* 368(9536): 666-78
- Ross R, Shaw KD, Rissanen J et al (1994) Sex differences in lean and adipose tissue distribution by magnetic resonance imaging: anthropometric relationships. *Am J Clin Nutr* 59(6): 1277-85
- Shaaban R, Leynaert B, Soussan D et al (2007) Physical activity and bronchial hyperresponsiveness: European Community Respiratory Health Survey II. *Thorax* 62(5): 403-10
- Sui X, LaMonte MJ, Laditka JN et al (2007) Cardiorespiratory fitness and adiposity as mortality predictors in older adults. *Jama* 298(21): 2507-16
- Sztajzel J (2004) Heart rate variability: a noninvasive electrocardiographic method to measure the autonomic nervous system. *Swiss Med Wkly* 134(35-36): 514-22
- The European Community Respiratory Health Survey II. (2000). "Main questionnaire." Retrieved 6 December, 2006, from <http://www.ecrhs.org/Quests/ECRHSIImainquestionnaire.pdf>.
- US Department of Health and Human Services (1996) Physical activity and health, A report of the Surgeon General. CDC. Atlanta, US Department of Health and Human Services, Public Health Service, CDC.
- Van Guilder GP, Hoetzer GL, Smith DT et al (2005) Endothelial t-PA release is impaired in overweight and obese adults but can be improved with regular aerobic exercise. *Am J Physiol Endocrinol Metab* 289(5): E807-13
- Washburn RA, Goldfield SR, Smith KW et al (1990) The validity of self-reported exercise-induced sweating as a measure of physical activity. *Am J Epidemiol* 132(1): 107-13
- Wei M, Kampert JB, Barlow CE et al (1999) Relationship between low cardiorespiratory fitness and mortality in normal-weight, overweight, and obese men. *Jama* 282(16): 1547-53
- Whang W, Manson JE, Hu FB et al (2006) Physical exertion, exercise, and sudden cardiac death in women. *Jama* 295(12): 1399-403
- World Health Organization (1994) WHO Expert Committee on Hypertension Control. Geneva.
- World Health Organization (1999) Obesity: preventing and managing the global epidemic: report of a WHO consultation. WHO technical report series: 894. Geneva.
- World Health Organization (2002) The European Health report 2002. WHO regional publications. European series; No. 97. Copenhagen.

Tables**Table 1** Baseline characteristics of the study population (n= 1703)

BMI	normal weight		overweight		obese	
n	636	(37%)	723	(43%)	344	(20%)
Female sex	400	(63%)	291	(40%)	180	(52%)
Current smokers	135	(21%)	139	(19%)	58	(17%)
Tertiary education	178	(28%)	189	(26%)	67	(20%)
Diabetes	10	(2%)	27	(4%)	34	(10%)
Beta-blocker intake	40	(6%)	88	(12%)	58	(17%)
Higher BMI cat. in follow-up	17	(3%)	348	(48%)	223	(65%)
no regular exercise	264	(42%)	295	(41%)	152	(44%)
½ - 1 h/week exercise	204	(32%)	243	(34%)	113	(33%)
≥2 h/week exercise	168	(26%)	185	(26%)	79	(23%)
Symptoms of chronic bronchitis	97	(15%)	115	(16%)	60	(17%)
Diuretic intake	8	(1%)	25	(4%)	27	(8%)
Sympathomimetic intake	11	(2%)	29	(4%)	13	(4%)
Calcium channel blocker	13	(2%)	37	(5%)	31	(9%)
ACE inhibitor intake	23	(4%)	49	(7%)	36	(11%)
Mean heart rate [bpm]	74	(SD 9.7)	74	(SD 9.0)	75	(SD 9.1)
Systolic blood pressure [mmHg]	125	(SD 19.0)	136	(SD 18.6)	138	(SD 17.0)
Diastolic blood pressure [mmHg]	78	(SD 10.2)	84	SD(10.1)	85	(SD 10.0)

1 Tables

2

3

4 Age [years] 59.4 (SD 6.3) 60.8 (SD 6.2) 61.3 (SD 6.1)

5

6 Non-HDL cholesterol [mmol/L] 4.6 (SD 1.1) 4.9 (SD 1.2) 4.8 (SD 1.0)

7

8

9 Uric acid [$\mu\text{mol/L}$] 288.1 (SD 75.1) 341.8 (SD 79.9) 359.8 (SD 84.1)

10

11

12 C-reactive protein [mg/L] 1.9 (SD 4.5) 2.5 (SD 5.5) 3.9 (SD 5.5)

13

14

15 Epworth sleep score 6.3 (SD 3.6) 6.4 (SD 3.5) 7.0 (SD 3.8)

Table 2 Adjusted^a geometric mean (GM) of HRV in different exercise categories

BMI	Exercise [h/week]	normal weight		overweight		obese	
		GM	95% CI	GM	95% CI	GM	95% CI
SDNN [ms]	None	131.8	(127.5, 136.3)	128.8	(124.9, 132.8)	115.9	(111.0, 121.1)
	½ - 1	135.1	(130.2, 140.2)	131.3	(127.0, 135.8)	127.0	(120.9, 133.5)
	≥ 2	138.3	(132.8, 144.0)	137.3	(132.1, 142.8)	137.8	(129.9, 146.2)
Total power [ms ²]	None	3733.2	(3458.6, 4029.6)	3459.4	(3223.6, 3712.6)	3018.3	(2732.1, 3334.5)
	½ - 1	3816.4	(3504.8, 4155.7)	3689.6	(3415.7, 3985.4)	3517.4	(3141.0, 3938.8)
	≥ 2	4081.3	(3717.0, 4481.4)	3725.3	(3407.3, 4072.9)	3904.0	(3410.0, 4469.7)
HF [ms ²]	None	65.1	(58.0, 73.1)	68.6	(61.6, 76.3)	62.0	(53.3, 72.0)
	½ - 1	67.1	(59.0, 76.3)	64.4	(57.4, 72.4)	71.0	(59.8, 84.2)
	≥ 2	69.1	(60.0, 80.0)	77.1	(67.4, 88.2)	79.8	(65.1, 97.9)
LF [ms ²]	None	206.6	(188.9, 225.9)	217.7	(200.4, 236.4)	167.4	(148.9, 188.1)
	½ - 1	235.2	(212.9, 259.9)	223.2	(203.9, 244.3)	207.4	(181.6, 236.8)
	≥ 2	247.4	(221.7, 276.0)	240.0	(216.2, 266.5)	211.9	(180.9, 248.4)

1
2
3
4
5
6
7
8
9
10
11
12
13
14
15
16
17
18
19
20
21
22
23
24
25
26
27
28
29
30
31
32
33
34
35
36
37
38
39
40
41
42
43
44
45
46
47
48
49

Tables

LF/HF	None	3.2	(2.9, 3.4)	3.2	(3.0, 3.4)	2.8	(2.5, 3.1)
	½ - 1	3.5	(3.2, 3.8)	3.5	(3.2, 3.8)	2.9	(2.6, 3.3)
	≥ 2	3.6	(3.3, 3.9)	3.1	(2.8, 3.4)	2.7	(2.3, 3.0)

^a adjusted for sex, age, age squared, study site, education, diabetes, hypertension, beta-blocker intake and smoking status

Table 3 Sensitivity analyses adding different variables to the baseline model with the natural logarithm of SDNN as outcome variable

	Effect estimate ^a	95% CI
Baseline analysis	19%	11-28%
+ Daytime sleepiness ^b	23%	12-35%
+ Symptoms of chronic bronchitis ^c	19%	10-28%
+ Heart rate	16%	9-24%
+Medication ^d	19%	10-28%
+ Cardiovascular risk markers in the blood ^e	20%	11-29%

^a Estimated %-increase in SDNN associated with regular physical (as compared to a sedentary way of life) exercise in obese, adjusted for sex, age, age squared, study site, education, diabetes, hypertension, beta-blocker intake and smoking status

^b Epworth sleepiness score >10 vs. ≤6

^c questionnaire data: "regular cough or phlegm, during the day or at night"

^d diuretics, sympathomimetics, calcium channel blockers, angiotensin converting enzyme inhibitors

^e non-HDL-cholesterol, uric acid, high sensitive c-reactive protein

4 **Titles and legends to figures**
5

6 **Figure 1** compares SDNN for obese subjects not exercising (reference group) to other subject
7 groups stratified by BMI category (normal, overweight, obese) and exercise status. Normal
8 weight is defined as $18.5 \leq \text{BMI} < 25.0 \text{ kg/m}^2$; overweight $25.0 \leq \text{BMI} < 30.0 \text{ kg/m}^2$; obese
9 $30.0 \leq \text{BMI} \text{ kg/m}^2$). Effect estimates and 95% confidence intervals.
10
11
12
13
14

15
16
17
18
19 ^a Difference to sedentary obese subjects
20

21 ^b Difference to sedentary overweight subjects (95% CI: -0.196, -0.022)
22

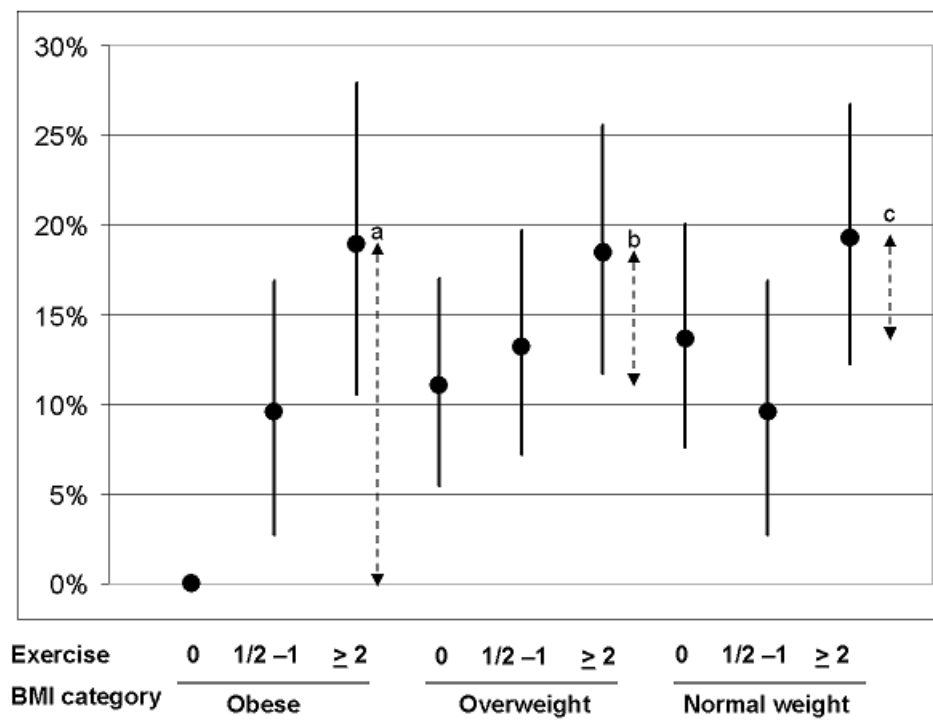
23 ^c Difference to sedentary normal weight subjects (95% CI: -0.214, -0,036)
24
25
26
27
28
29
30
31
32
33
34
35
36
37
38
39
40
41
42
43
44
45
46
47
48
49
50
51
52
53
54
55
56
57
58
59
60
61
62
63

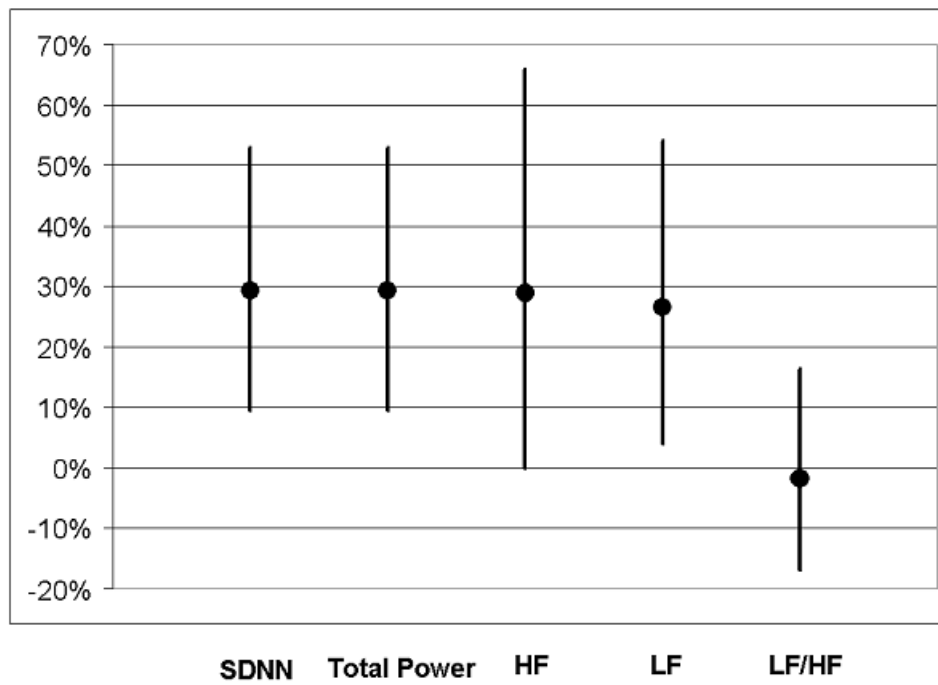
4 **Figure 2** Average percent increase and 95% confidence interval in measures of HRV (SDNN,
5
6 total power, HF, LF) in obese subjects exercising ≥ 2 h/week, compared to sedentary obese
7
8 subjects.
9

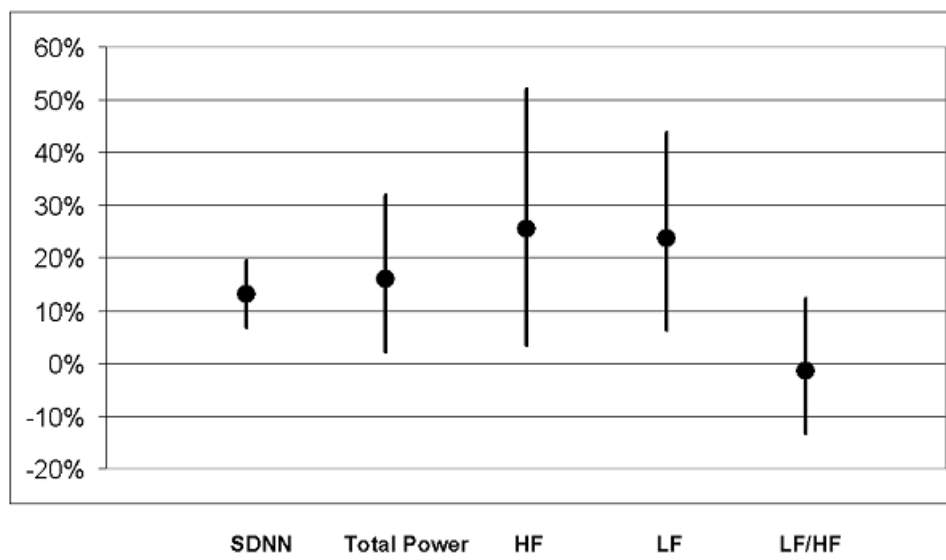
10
11
12
13
14
15
16
17
18
19
20
21
22
23
24
25
26
27
28
29
30
31
32
33
34
35
36
37
38
39
40
41
42
43
44
45
46
47
48
49
50
51
52
53
54
55
56
57
58
59
60
61
62
63
64
65

4 **Figure 3** Average percent increase in measures of HRV (SDNN, total power, HF, LF) in
5
6 subjects with weight gain exercising ≥ 2 h/week, compared to sedentary subjects with weight
7
8 gain. Weight gain is defined as changing to a higher weight category (e.g., becoming
9
10 overweight or obese)
11
12
13
14
15
16
17
18
19
20
21
22
23
24
25
26
27
28
29
30
31
32
33
34
35
36
37
38
39
40
41
42
43
44
45
46
47
48
49
50
51
52
53
54
55
56
57
58
59
60
61
62

% Difference in SDNN







Supplementary Material

[Click here to download Supplementary Material: Suppl_table1.pdf](#)

Supplementary Material

[Click here to download Supplementary Material: Suppl_table2.pdf](#)

Supplementary Material

[Click here to download Supplementary Material: Suppl_fig1.pdf](#)