



**University of  
Zurich**<sup>UZH</sup>

**Zurich Open Repository and  
Archive**

University of Zurich  
Main Library  
Strickhofstrasse 39  
CH-8057 Zurich  
[www.zora.uzh.ch](http://www.zora.uzh.ch)

---

Year: 2013

---

## **Synanthropic birds associated with high prevalence of tick-borne rickettsiae and with the first detection of rickettsia aeschlimannii in Hungary**

Hornok, Sándor ; Csörgő, Tibor ; de la Fuente, José ; Gyuranecz, Miklós ; Privigyei, Csaba ; Meli, Marina L ; Kreizinger, Zsuzsa ; Gönczi, Enikő ; Fernández de Mera, Isabel G ; Hofmann-Lehmann, Regina

**Abstract:** The aim of this study was to analyze synanthropic birds as risk factors for introducing ticks and tick-borne pathogens into human settlements, with an emphasis on rickettsiae. Altogether 184 subadult ticks were found on 5846 birds. Tick infestation was most prevalent during the spring. In this sample group the majority of ticks were molecularly identified as *Ixodes ricinus*, and three individuals collected from the European robin as *Hyalomma marginatum marginatum*. The latter is the first molecularly confirmed occurrence of this species in Hungary. *Rickettsia aeschlimannii* was detected in *H. marginatum*, also for the first time in Hungary, and in ticks from an urbanized bird species north of the Mediterranean countries. The overall prevalence range of rickettsiae (including *R. helvetica* and *R. monacensis*) in ticks of synanthropic birds was 29-40%, exceeding that in questing ticks of relevant species reported earlier. Additionally, in specimens of *I. ricinus*, the presence of *Borrelia burgdorferi sensu lato* (s.l.), *Anaplasma phagocytophilum*, and a new *Francisella*-like genotype was also verified. Thus, it can be concluded that birds with urban or periurban habitats pose a high risk as tick carriers and reservoirs of zoonotic agents, especially of rickettsiae.

DOI: <https://doi.org/10.1089/vbz.2012.1032>

Posted at the Zurich Open Repository and Archive, University of Zurich

ZORA URL: <https://doi.org/10.5167/uzh-74269>

Journal Article

Originally published at:

Hornok, Sándor; Csörgő, Tibor; de la Fuente, José; Gyuranecz, Miklós; Privigyei, Csaba; Meli, Marina L; Kreizinger, Zsuzsa; Gönczi, Enikő; Fernández de Mera, Isabel G; Hofmann-Lehmann, Regina (2013). Synanthropic birds associated with high prevalence of tick-borne rickettsiae and with the first detection of rickettsia aeschlimannii in Hungary. *Vector Borne and Zoonotic Diseases*, 13(2):77-83.

DOI: <https://doi.org/10.1089/vbz.2012.1032>

# Synanthropic Birds Associated with High Prevalence of Tick-Borne Rickettsiae and with the First Detection of *Rickettsia aeschlimannii* in Hungary

Sándor Hornok,<sup>1</sup> Tibor Csörgő,<sup>2,3</sup> José de la Fuente,<sup>4,5</sup> Miklós Gyuranecz,<sup>6</sup> Csaba Privigyei,<sup>3</sup> Marina L. Meli,<sup>7</sup> Zsuzsa Kreizinger,<sup>6</sup> Enikő Gönczi,<sup>7</sup> Isabel G. Fernández de Mera,<sup>4,8</sup> and Regina Hofmann-Lehmann<sup>7</sup>

## Abstract

The aim of this study was to analyze synanthropic birds as risk factors for introducing ticks and tick-borne pathogens into human settlements, with an emphasis on rickettsiae. Altogether 184 subadult ticks were found on 5846 birds. Tick infestation was most prevalent during the spring. In this sample group the majority of ticks were molecularly identified as *Ixodes ricinus*, and three individuals collected from the European robin as *Hyalomma marginatum marginatum*. The latter is the first molecularly confirmed occurrence of this species in Hungary. *Rickettsia aeschlimannii* was detected in *H. marginatum*, also for the first time in Hungary, and in ticks from an urbanized bird species north of the Mediterranean countries. The overall prevalence range of rickettsiae (including *R. helvetica* and *R. monacensis*) in ticks of synanthropic birds was 29–40%, exceeding that in questing ticks of relevant species reported earlier. Additionally, in specimens of *I. ricinus*, the presence of *Borrelia burgdorferi* sensu lato (s.l.), *Anaplasma phagocytophilum*, and a new *Francisella*-like genotype was also verified. Thus, it can be concluded that birds with urban or periurban habitats pose a high risk as tick carriers and reservoirs of zoonotic agents, especially of rickettsiae.

**Key Words:** Urban birds—Tick-borne pathogens—*Rickettsia*—*Borrelia*—*Anaplasma*—*Francisella*.

## Introduction

THE ROLE OF BIRDS in the epidemiology of tick-borne diseases maybe two-fold. First, they can act as transporters of ticks, frequently disseminating them to large distances, especially during seasonal migration (Elfving et al. 2010). Second, they can serve as reservoirs of disease agents, and when bacteremic, can also provide the source of infection for ticks (Hubálek 2004). Although they may be considered separately, these two facets are naturally interrelated. For instance, birds are known both as reservoirs (becoming infected) in case of Lyme borreliosis (Gylfe et al. 2000) and as hosts of ticks with spirochetes (Dubska et al. 2011). Similarly, while the role of

birds in the transmission cycle of rickettsiae is not fully clarified, it is assumed that they not only act as carriers of ticks harboring these pathogens (Elfving et al. 2010), but may also become rickettsemic (Mediannikov et al. 2007).

The significance of birds in these situations involving zoonotic pathogens may be particularly high in urban and periurban habitats, where, having flown in, their engorged ticks can detach. Thus, inflying birds may promote shorter-term changes than already present local reservoirs. Irrespective of this, most of the studies on ornithophilic ticks and associated pathogens focus on the way birds most likely have become tick infested, *i.e.*, during ground feeding (Elfving et al. 2010, Dubska et al. 2011). Several reports concern exotic

<sup>1</sup>Department of Parasitology and Zoology, Faculty of Veterinary Science, Szent István University, Budapest, Hungary.

<sup>2</sup>Department of Anatomy, Cell and Developmental Biology, Eötvös Loránt University, Budapest, Hungary.

<sup>3</sup>Ócsa Bird Ringing Station, Hungary.

<sup>4</sup>Instituto de Investigación en Recursos Cinegéticos (IREC), Ciudad Real, Spain.

<sup>5</sup>Department of Veterinary Pathobiology, Center for Veterinary Health Sciences, Oklahoma State University, Stillwater, Oklahoma.

<sup>6</sup>Institute for Veterinary Medical Research, Centre for Agricultural Research, Hungarian Academy of Sciences, Budapest, Hungary.

<sup>7</sup>Clinical Laboratory, Vetsuisse Faculty, University of Zurich, Zurich, Switzerland.

<sup>8</sup>Centro de Vigilancia Sanitaria Veterinaria (VISAVET), Departamento de Sanidad Animal, Facultad de Veterinaria, Universidad Complutense de Madrid, Madrid, Spain.

and anthrophilic ticks or zoonotic agents that may be imported by migratory birds to nonendemic regions, but they do not approach avian hosts according to their different potentials for arriving in a human environment (Rumer et al. 2011a, Jameson et al. 2012). To provide relevant information on the latter aspect, it is inevitable to address the higher or lower impact of tick dispersal by birds in the context of their preferred habitats.

Therefore, this study was undertaken not only to collect and molecularly analyze ticks from birds, but also to highlight the epidemiological role of those species that have urban/periurban habitats and to compare the prevalence rates of bacterial agents in ticks of synanthropic birds with those in other geographically relevant (Hungarian, European) sample sources. Such data on borreliae are available in the literature (Dubska et al. 2011), but are lacking for rickettsiae.

## Materials and Methods

### Sample collection and preparation

Birds mist-netted at the Ócsa Ringing Station (Duna-Ipoly National Park) were checked for the presence of hard ticks (Acari: Ixodidae) during 2011. Specimens removed with forceps were put into 70% ethanol. Subadult ticks were morphologically identified by using standard keys (Babos 1964): *Haemaphysalis (Ha.) concinna* individuals on the species level, whereas *Ixodes* and *Hyalomma (Hy.)* specimens were identified only on the genus level. In the latter two genera, species were determined molecularly because of the morphological similarity of immature stages of different species to each other (Rumer et al. 2011a, b). Focusing on migratory birds, spring-

collected samples were selected for further analysis. To minimize sample number for multiple analyses, ticks were processed individually or in pools (of 2–7 specimens) separated according to their host individuals, species, and developmental stages. DNA was extracted as described (Hornok et al. 2010a).

### Molecular identification of subadult ticks

In case of *Hyalomma* subadults, fragments of the 16S and 12S rRNA genes were amplified in two PCR assays, as already reported (Black and Piesman 1994, Norris et al. 1999). PCR products were resin purified (Wizard, Promega) and cloned into the pGEM-T vector (Promega, Madison, WI) for sequencing both strands (Secugen S.L., Madrid, Spain). At least 3 clones were sequenced for each amplicon. *Ixodes* subadults were identified with 2 species-specific primer sets, 1 for *I. ricinus* (dITS678, rITS814) and another for *I. persulcatus* (dITS118, rITS436) according to Rumer et al. (2011b).

### Molecular analyses for tick-borne agents

PCR assays for pathogen detection in tick DNA are summarized and referenced in Table 1. These tests were performed with all individual and pooled samples. For quantitation by standards in the *Rickettsia helvetica* 23S rRNA TaqMan PCR, 10-fold serial dilutions of cloned plasmid DNA with known copy numbers were used. From *Rickettsia* *gltA* TaqMan PCR-positive samples with threshold cycle (Ct) values  $\leq 30$ , a 381-bp portion of the citrate synthase gene was sequenced as described (Boretti et al. 2009). *Francisella*-like bacteria were analyzed as reported (Barns et al. 2005), and

TABLE 1. PCR ASSAYS USED IN THIS STUDY FOR THE DETECTION OF BACTERIAL AGENTS

Target microorganism(s)	Target gene	PCR type	Names and sequences of forward (f) and reverse (r) primers, probes (p): 5'-3'	Reference
<i>Rickettsia helvetica</i>	23S rRNA	TaqMan	Rickhelv.147f: TTTGAAGGAGACACGGAACACA Rickhelv.211r: TCCGGTACTCAAATCCTCACGTA Rickhelv.170p: 6-FAM-AACCGTAGCGTACACTTA-MGBNFQ	Boretti et al. 2009
<i>Rickettsia</i> spp.	<i>gltA</i>	TaqMan	CS-F: TCGCAAATGTTTCACGGTACTTT CS-R: TCGTGCATTTCTTCCATTGTG CS-P: 6-FAM-TGCAATAGCAAGAACCCTAGGCTGGATG-BHQ	Stenos et al. 2005
<i>Borrelia burgdorferi</i> s.l.	<i>flagellin</i>	TaqMan	B.398f: GGGAAGCAGATTTGTTTGACA B.484r: ATAGAGCAACTTACAGACGAAATTAATAGA B.421p: 6-FAM-ATGTGCATTTGGTTATATTGAGCTTGATCAGCAA-TAMRA	Leutenegger et al. 1999
<i>Anaplasma phagocytophilum</i>	16S rRNA	TaqMan	Ep.145f: CCATTCTAGTGGCTATCCCATACTAC Ep.50r: TCGAACGGATTATTCTTTATAGCTTG Ep.80p: 6-FAM-CCTATGCATTAATCACCCTGCTGCCACT-TAMRA	Pusterla et al. 1999
<i>Francisella tularensis</i>	<i>tul4</i>	TaqMan	Tul4F: ATTACAATGGCAGGCTCCAGA Tul4R: TGCCCAAGTTTTATCGTCTTCT Tul4P: 6-FAM-TTCTAAGTGCCATGATACAAGCTTCCCAATTAAG-BHQ	Versage et al. 2003
<i>Francisella-like endosymbiont</i>	16S rRNA	conventional	Fr153F0.1 : GCCCATTTGAGGGGGATACC Fr1281R0.1 : GGACTAAGAGTACCTTTTTGAGT	Barns et al. 2005
<i>Coxiella burnetii</i>	IS1111a	TaqMan	IS1111F: CCGATCATTGGGCGCT IS1111R: CGGCGGTGTTAGGC IS1111P: 6FAM-TTAACACGCCAAGAAACGTATCGCTGTG-MGB	Loftis et al. 2006

TABLE 2. DISTRIBUTION OF TICK SPECIES AND STAGES ACCORDING TO BIRD HOSTS DURING SPRING TIME

Latin name of bird species	Migration type of bird species	Number of captured individuals	Number found tick-infested	Prevalence of tick infestation	<i>Ixodes ricinus</i>	<i>Haemaphysalis concinna</i>	<i>Hyalomma marginatum</i>	Intensity of tick infestation
<i>Parus major</i>	N	342	4	0.01	6×N	—	—	1.5
<i>Erithacus rubecula</i>	S-MD	734	42	0.057	19×L, 34×N	1×N	2×L, 1×N	1.36
<i>Prunella modularis</i>	S-MD	69	2	0.029	2×L, 5×N	—	—	3.5
<i>Carduelis chloris</i>	S-MD	261	1	0.004	1×N	—	—	1
<i>Turdus philomelos</i>	S-MD	33	2	0.06	2×N	—	—	1
<i>Turdus iliacus</i>	S-MD	1	1	1	4×N	—	—	4
<i>Turdus merula</i>	N	39	4	0.1	24×N	—	—	6
<i>Sylvia atricapilla</i>	S-MD	140	1	0.007	1×N	—	—	1
<i>Troglodytes troglodytes</i>	S-MD	16	1	0.063	2×L	—	—	2
<i>Phylloscopus collybita</i>	S-MD	89	1	0.011	1×L	—	—	1
<i>Acrocephalus scirpaceus</i>	LD	49	1	0.02	1×N	—	—	1
<i>Acrocephalus arundinaceus</i>	LD	1	1	1	1×N	—	—	1
<i>Locustella luscinioides</i>	LD	12	1	0.083	1×N	—	—	1

Recaptures are not included. Except for *Acrocephalus* spp. and *Locustella luscinioides*, all bird species in this table are considered to have urban or periurban habitats. Migration types of bird species are also indicated (i.e., N = nonmigrant, S-MD short to middle distance and LD = long distance migrant). L, Larva; N, nymph.

phylogenetic comparison was made by using the neighbor-joining method with maximum composite likelihood model and 1000 bootstraps with the MEGA5 program (Tamura et al. 2011).

Statistical methods

Prevalences were compared by the Fisher exact test, and differences were regarded significant if  $p \leq 0.05$ . Prevalence rates were calculated from PCR results of individual samples. For pooled ticks, the minimum prevalence was determined from the number of positive pools, expressed as the percentage of all evaluated tick individuals of the same species (provided that there must have been at least one PCR-positive specimen in each PCR-positive pool). Overall prevalence range of a pathogen group is given as minimum prevalence to prevalence based on PCR results of all individual samples.

Results

Species and abundance of ticks

Altogether 184 subadult ticks were found on 5846 birds. Tick infestation was significantly more prevalent during the spring (March–May, 62 of 1786 birds), than in the summer (June–August, 17 of 2630 birds) or autumn (September–November, 16 of 1430 birds) ( $p < 0.001$ ). In the spring and in the autumn, the majority of ticks were *Ixodes* subadults (96.3% and 100% of all collected specimens, respectively), whereas in the summer highest abundance (92%) was observed in case of *Ha. concinna* larvae and nymphs.

Mean tick numbers per host (intensities of infestations) in the spring (i.e., during migration) were higher among bird species known to have urban/periurban habitats, than in the case of nonsynanthropic ones, whereas the prevalence rates of tick infestations were more equilibrated between these groups (Table 2).

Prostrate subadults were molecularly identified as *I. ricinus*. Three *Hyalomma* immatures (2 molting larvae and 1 nymph) were also collected from a highly urbanized species, the European robin (Table 2). Molecular analysis of these revealed 100% sequence homology to *Hy. marginatum marginatum* from Morocco (accession numbers L34307 and AF150034 for 16S and 12S rRNA genes, respectively).

Species and prevalence of tick-borne agents

In the spring, 108 ticks were removed from birds. These were analyzed as 56 individual samples and 16 pools. Half of them (36 of 72) were PCR positive for at least 1 of the tested pathogens (Table 3). Except for 1 *I. ricinus* nymph, dual infections were found in pooled samples.

In the *R. helvetica*-specific PCR, 17 samples were positive (3/16 of *I. ricinus* larvae, 13/50 of *I. ricinus* nymphs, 1/3 of *H. concinna* nymphs; Table 3), meaning 15.7% minimum prevalence. Copy numbers per 5  $\mu$ L were 1–10<sup>2</sup> in 8 samples, 10<sup>2</sup>–10<sup>4</sup> in 1 sample, and higher (maximum 2.8×10<sup>5</sup>) in a further 8 samples. Regarding other rickettsiae, 15 samples were positive (2/16 of *I. ricinus* larvae, 10/50 of *I. ricinus* nymphs, 3/3 *Hyalomma* subadults; Table 3). Sequencing from 10 samples of *I. ricinus* showed 100% homology to a former Hungarian isolate of *Rickettsia monacensis* (accession number EU853830). The minimum prevalence for this species was 11.1%. In *Hy. marginatum*, *Rickettsia aeschlimannii* was identified, for the first

TABLE 3. NUMBER OF PCR-POSITIVE TICK SAMPLES RELATIVE TO ALL SAMPLES ANALYZED FROM THE SAME BIRD SPECIES

Avian host	Tick species	Tick developmental stage	PCR positives/all tested		
			Rickettsia helvetica	Other Rickettsia spp.	Borrelia burgdorferi s.l.
<i>Erithacus rubecula</i>	<i>Ixodes ricinus</i>	Larva	2/13	2/13	—
		Nymph	7/32	8/32	1/32
	<i>Haemaphysalis concinna</i>	Nymph	1/3	—	—
	<i>Hyalomma marginatum</i>	Larva	—	2/2	—
		Nymph	—	1/1	—
<i>Turdus merula</i>	<i>Ixodes ricinus</i>	Nymph	2*/4	1/4	2*/4
<i>Turdus iliacus</i>	<i>Ixodes ricinus</i>	Nymph	1*/1	—	1*/1
<i>Turdus philomelos</i>	<i>Ixodes ricinus</i>	Nymph	1/2	—	—
<i>Parus major</i>	<i>Ixodes ricinus</i>	Nymph	1*/4	1/4	1*/4
<i>Prunella modularis</i>	<i>Ixodes ricinus</i>	Larva	—	—	1/1
		Nymph	—	—	1/2
<i>Phylloscopus collybita</i>	<i>Ixodes ricinus</i>	Larva	1/1	—	—
<i>Locustella luscinioides</i>	<i>Ixodes ricinus</i>	Nymph	1*/1	—	1*/1
			<i>In toto</i> 17/72	<i>In toto</i> 15/72	<i>In toto</i> 8/72

Except for *Locustella luscinioides*, all bird species in this table are considered to have urban or periurban habitats. All samples were evaluated for all pathogens, but only the positives are shown numerically. Samples with simultaneous presence of *R. helvetica* and *B. burgdorferi* sensu lato (s.l.) are marked with asterisk.

time in Hungary, with 100% sequence similarity to an isolate from Egypt (HQ335153). The overall prevalence range for rickettsiae in ticks of synanthropic birds was 29–40%.

PCR positivity to *Borrelia burgdorferi* sensu lato (s.l.) was detected only in *I. ricinus* (1/16 samples of larvae and 7/50 of nymphs were positive; Table 3), amounting to a minimum prevalence of 7.4% (Table 3). Results of this assay (low copy numbers, Ct >30) did not allow genotype sequencing. In the dually positive 4 samples, borreliae were always in concomitancy with *R. helvetica* (Table 3).

*Anaplasma phagocytophilum* was demonstrated in 1 pool of *I. ricinus* nymph from *Erithacus rubecula*, with simultaneous positivity to *R. monacensis*. Interestingly, from 1 *I. ricinus* larva, also from *E. rubecula*, a novel *Francisella*-like sequence was obtained (1036 bp, accession number JQ740890), which showed the closest (99%) similarity to endosymbionts detected in *Dermacentor reticulatus* in central Europe (Fig. 1). All samples were negative for *Coxiella burnetii*.

## Discussion

This is the first survey focusing on the potential role of synanthropic birds in spreading tick-borne rickettsiae. Tick samples collected from avian hosts during the spring also allowed verification for the first time with molecular methods that nonendemic tick and *Rickettsia* spp. are imported by migratory birds to central Europe. The most important species in this respect, the European robin (*E. rubecula*), arrives in Hungary from the Mediterranean countries (Csörgő et al. 2009). Similarly, the majority of bird species evaluated in the present study are short- to middle distance migrants (Table 2), most frequently caught at Ócsa Ringing Station on their way to northern Europe (Csörgő et al. 2009). Because birds can cover few hundreds of kilometers during a single day of migration, and tick larvae and nymphs are known to attach and feed for several days (Babos 1964), we can assume that most of the ticks and tick-borne pathogens identified in the present study from the spring collection derived from southern Europe.

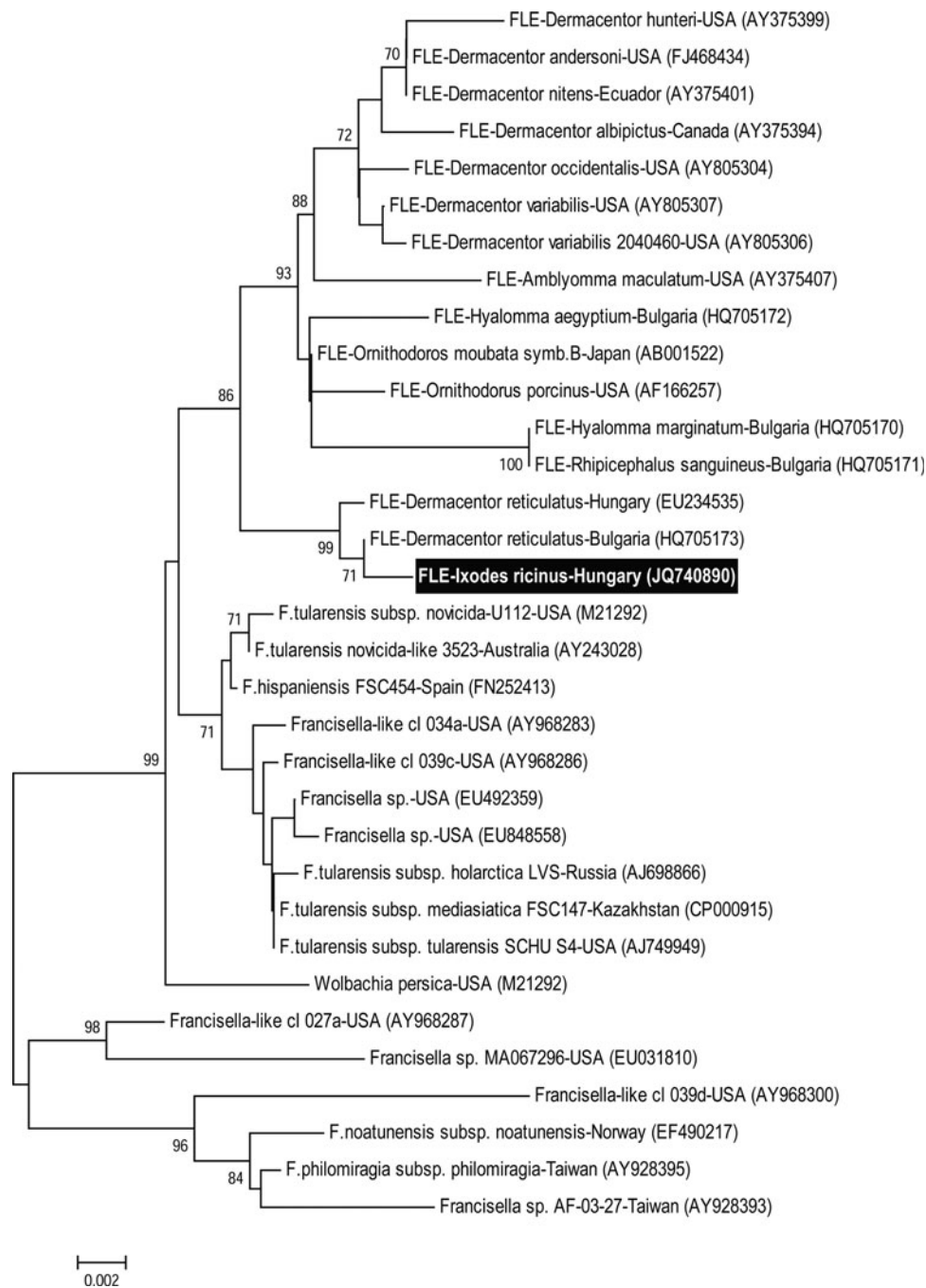
Taking into account that the majority of ixodid ticks in Hungary and surrounding countries have spring peak activities (Babos 1964, Hornok 2009), it was not unusual to find the highest prevalence of tick infestation among birds in that season, although this is in contrast to some other observations in the region (Dubska et al. 2011). Summer dominance of *Ha. concinna* in this study also reflected the pattern already reported for questing ticks in the country (Hornok 2009).

*Hyalomma* spp. are rarely found in Hungary. Their subadults were either not identified on the species level (Janisch 1962), or were most likely members of the *Hy. marginatum* complex, but were named synonymously as *Hy. impressum* (Babos 1964, Apanaskevich and Horak 2008). One *Hy. marginatum* nymph was also morphologically identified in a recent study (Földvári et al. 2011). Correspondingly, while the sporadic import of *Hy. marginatum* subadults has been long accepted in Hungary, here we report the first molecular evidence of this species in the country.

In *Hy. marginatum* subadults of the present study, *R. aeschlimannii* was identified for the first time in Hungary. This human pathogenic rickettsia is endemic to the Mediterranean part of Europe (Fernández-Soto et al. 2003, Santoz-Silva et al. 2006) and was recently detected in the same tick species from a migratory bird in Germany (Rumer et al. 2011a). However, the sample source in that study was the reed warbler (*Acrocephalus scirpaceus*), which is a nonurban bird species unlikely to disperse *R. aeschlimannii*-infected ticks in a human environment. On the other hand, here *R. aeschlimannii* was demonstrated in ticks of the European robin known for its synanthropic habitats. Therefore, the present data are the first to indicate that *R. aeschlimannii* can be imported by migratory birds into human settlements north of the Mediterranean basin.

The prevalence range of *Rickettsia* spp. in ticks of synanthropic birds in the present study was 29–40%. This means that birds carried ticks, predominantly *I. ricinus*, with a higher prevalence of rickettsiae than shown before with the same molecular methods in the case of questing ticks in the region





**FIG. 1.** Neighbor-joining phylogenetic tree showing relationships of 16S rRNA gene sequences obtained from *Francisella* species and *Francisella*-like endosymbionts (FLEs) with the novel *Francisella*-like isolate from *Ixodes ricinus* larva. Bootstrap values of neighbor-joining (1000 replicates) of  $\geq 70$  are shown.

(minimum prevalence of *R. helvetica* in *Ha. concinna*, *I. ricinus* was 1–7%; pool prevalence of *R. monacensis* was 16%: Hornok et al. 2010b). In another study using similarly sensitive real-time PCR on samples from northern Europe, but regardless of synanthropic avian hosts, the prevalence of rickettsiae in bird ticks was only 11% (Elfving et al. 2010). In addition, the prevalence of *R. aeschlimannii* in *Hy. marginatum* in foreign studies was significantly ( $p < 0.001$ ) lower, 6–9% (Fernández-Soto et al. 2003, Santoz-Silva et al. 2006). Thus, these data indicate a high risk for import of tick-borne rickettsiae by birds into urban/periurban habitats.

One possible explanation for higher prevalence of rickettsiae in engorged ticks is that their hosts were rickettsemic. Alternatively, the distribution of these zoonotic agents may be biased in ticks of the human environment, and in this way more infected ticks can attach to birds with this type of habitat. Data in the literature support the urban/periurban accumulation of tick-borne rickettsiae, although this may depend on the species (Raoult et al. 1987, Milagres et al. 2010). *R. monacensis*, which had a high prevalence in ticks of synanthropic birds in this study, was also isolated first in a city park (Simser et al. 2002).

Higher prevalence of *B. burgdorferi* s.l. in nymphs, rather than in larvae of *I. ricinus*, here corresponds to the low frequency of transovarial transmission of borreliae (Hubálek 2004). Because bird-feeding ticks in the present study had a higher prevalence of both *B. burgdorferi* s.l. and *A. phagocytophilum* than ticks collected from rodents in the same region (Rigó et al. 2011), these data are in line with reports on the higher epidemiological significance of birds as hosts of ticks and as reservoirs of these tick-borne pathogens in comparison with small mammals (Franke et al. 2010).

Despite the fact that *C. burnetii* was recently shown to be highly prevalent in samples of domestic ruminants in Hungary (Gyuranecz et al. 2012), and birds are long known carriers of this agent (Babudieri and Moscovici 1952), here all ticks were found to be PCR negative. This might mean that birds and/or their ticks do not play an important role in the transmission of Q fever in the region and other reservoirs participate in its sylvatic cycle.

One *Francisella*-like sequence was also obtained from an *I. ricinus* larva. The relevant tick most likely acquired this bacterium transovarially, because an engorged nymph from the same bird was PCR negative. However, the horizontal transfer, e.g., by co-feeding, from other ticks can not be excluded, as suggested in case of the ancestors of these endosymbionts (Scoles 2004). *Francisella*-like agents were only detected so far in *D. reticulatus* and *Hyalomma* sp. ticks (Escudero et al. 2008, Sréter-Lancz et al. 2009, de Carvalho et al. 2011, Ivanov et al. 2011); therefore, this is the first molecular evidence of their occurrence in *I. ricinus*. *Francisella*-like bacteria were also reported from small mammals, and they may even have some degree of pathogenicity in these hosts (Escudero et al. 2008). Here it is indicated for the first time that they may associate with bird ticks. The sequence divergence between the *Francisella*-like agent in the present study and those already reported from *D. reticulatus* exceeds in magnitude the difference between *Francisella tularensis* ssp. *tularensis* and *F. t. ssp. holarctica* in the same part of their 16S rRNA genes.

In summary, the epidemiological significance of migratory birds importing exotic tick species and arriving in gardens and city parks around springtime may be considerably high. Synanthropic birds are also important to take into account during tick-borne disease risk assessment, because ticks disseminated by them may increase the local prevalence of rickettsiae and sometimes may introduce even nonendemic pathogens.

### Acknowledgments

S. Hornok was supported by the Bolyai János scholarship (Hungarian Academy of Sciences).

### Author Disclosure Statement

No competing financial interests exist.

### References

- Apanaskevich DA, Horak IG. The genus *Hyalomma* Koch, 1844. V. Re-evaluation of the taxonomic rank of taxa comprising the *H. (Euhyalomma) marginatum* Koch complex of species (Acari: Ixodoidea) with redescription of all parasitic stages and notes on biology. *Intern J Acarol* 2008; 34:13–42.
- Babos S. *Die Zeckenfauna Mitteleuropas*. Budapest: Academic Press, 1964:1–410. [in German]
- Babudieri B, Moscovici C. Experimental and natural infections of birds by *Coxiella burnetii*. *Nature* 1952; 169:195–196.
- Barns SM, Grow CC, Okinaka RT, Keim P, et al. Detection of diverse new *Francisella*-like bacteria in environmental samples. *Appl Environ Microbiol* 2005; 71:5494–5500.
- Black WC, Piesman J. Phylogeny of hard and soft-tick taxa (Acari: Ixodida) based on mitochondrial 16S rDNA sequences. *Proc Nat Acad Sci USA* 1994; 91:10034–10038.
- Boretti FS, Perreten A, Meli ML, Cattori V, et al. Molecular Investigations of *Rickettsia helvetica* infection in dogs, foxes, humans, and *Ixodes* ticks. *Appl Environ Microbiol* 2009; 75:3230–3237.
- Csörgő T, Karcza Zs, Halmos G, Magyar G, et al. *Bird Migration Atlas of Hungary*. Budapest: Kossuth Kiadó Zrt., 2009:672 pp. [in Hungarian with English summaries]
- de Carvalho IL, Santos N, Soares T, Zé-Zé L, et al. *Francisella*-like endosymbiont in *Dermacentor reticulatus* collected in Portugal. *Vector Borne Zoonotic Dis* 2011; 11:185–188.
- Dubská L, Literak I, Kocianova E, Taragelova V, et al. Synanthropic birds influence the distribution of *Borrelia* species: Analysis of *Ixodes ricinus* ticks feeding on passerine birds. *Appl Environ Microbiol* 2011; 77:1115–1117.
- Elfving K, Olsen B, Bergström S, Waldenström J, et al. Dissemination of spotted fever rickettsia agents in Europe by migrating birds. *PLoS One* 2010; 5:e8572.
- Escudero R, Toledo A, Gil H, Kováčová K, et al. Molecular method for discrimination between *Francisella tularensis* and *Francisella*-like endosymbionts. *J Clin Microbiol* 2008; 46:3139–3143.
- Fernández-Soto P, Encinas-Grandes A, Pérez-Sánchez R. *Rickettsia aeschlimannii* in Spain: Molecular evidence in *Hyalomma marginatum* and five other tick species that feed on humans. *Emerg Infect Dis* 2003; 9:889–890.
- Földvári G, Rigó K, Jablonszky M, Biró N, et al. Ticks and the city: Ectoparasites of the Northern white-breasted hedgehog (*Erinaceus roumanicus*) in an urban park. *Ticks Tick Borne Dis* 2011; 2:231–234.
- Franke J, Fritsch J, Tomaso H, Straube E, et al. Coexistence of pathogens in host-seeking and feeding ticks within a single natural habitat in Central Germany. *Appl Environ Microbiol* 2010; 76:6829–6836.
- Gylfe A, Bergström S, Lundström J, Olsen B. Reactivation of *Borrelia* infection in birds. *Nature* 2000; 403:724–725.
- Gyuranecz M, Dénes B, Hornok S, Kovács P, et al. Prevalence of *Coxiella burnetii* in Hungary: Screening of dairy cows, sheep, commercial milk samples and ticks. *Vector-Borne Zoonotic Dis* 2012; 12:650–653.
- Hornok S. Allochronic seasonal peak activities of *Dermacentor* and *Haemaphysalis* spp. under continental climate in Hungary. *Vet Parasitol* 2009; 163:366–369.
- Hornok S, Hofmann-Lehmann R, Fernández de Mera IG, Meli ML, et al. Survey on blood-sucking lice (Phthiraptera: Anoplura) of ruminants and pigs with molecular detection of *Anaplasma* and *Rickettsia* spp. *Vet Parasitol* 2010a; 174:335–338.
- Hornok S, Meli ML, Perreten A, Farkas R, et al. Molecular investigation of hard ticks (Acari: Ixodidae) and fleas (Siphonaptera: Pulicidae) as potential vectors of rickettsial and mycoplasmal agents. *Vet Microbiol* 2010b; 140:98–104.
- Hubálek Z. An annotated checklist of pathogenic microorganisms associated with migratory birds. *J Wildl Dis* 2004; 40:639–659.
- Ivanov IN, Mitkova N, Reye AL, Hübschen JM, et al. Detection of new *Francisella*-like tick endosymbionts in *Hyalomma* spp. and *Rhipicephalus* spp. (Acari: Ixodidae) from Bulgaria. *Appl Environ Microbiol* 2011; 77:5562–5565.

- Jameson LJ, Morgan PJ, Medlock JM, Watola G, et al. Importation of *Hyalomma marginatum*, vector of Crimean-Congo haemorrhagic fever virus, into the United Kingdom by migratory birds. *Ticks Tick Borne Dis* 2012; 3:95–99.
- Janisch, M. Tick carrier birds spreading disease agents. *Aquila* 1962; 67–68:191–194. [in Hungarian]
- Leutenegger, CM, Pusterla, N, Mislin, CN, Weber R, et al. Molecular evidence of coinfection of ticks with *Borrelia burgdorferi* sensu lato and the human granulocytic ehrlichiosis agent in Switzerland. *J Clin Microbiol* 1999; 37:3390–3391.
- Loftis, AD, Reeves, WK, Szumlas, DE, Abbassy, MM, et al. Rickettsial agents in Egyptian ticks collected from domestic animals. *Exp Appl Acarol* 2006; 40:67–81.
- Mediannikov O, Paddock CD, Parola P. Other rickettsiae of possible or undetermined pathogenicity. In: Raoult D, Parola P, eds. *Rickettsial Diseases*. Informa Healthcare, 2007; 163–177.
- Milagres BS, Padilha AF, Barcelos RM, Gomes GG, et al. *Rickettsia* in synanthropic and domestic animals and their hosts from two areas of low endemicity for Brazilian spotted fever in the eastern region of Minas Gerais, Brazil. *Am J Trop Med Hyg* 2010; 83:1305–1307.
- Norris DE, Klompen JSH, Black WC. Comparison of the mitochondrial 12S and 16S ribosomal DNA genes in resolving phylogenetic relationships among hard ticks (Acari: Ixodidae). *Ann Entomol Soc Am* 1999; 92:117–129.
- Pusterla N, Huder JB, Leutenegger CM, Braun U, et al. Quantitative real-time PCR for detection of members of the *Ehrlichia phagocytophila* genogroup in host animals and *Ixodes ricinus* ticks. *J Clin Microbiol* 1999; 37:1329–1331.
- Raoult D, Toga, B, Chaudet H, Chiche-Portiche C. Rickettsial antibody in southern France: antibodies to *Rickettsia conorii* and *Coxiella burnetii* among urban, suburban and semi-rural blood donors. *Trans R Soc Trop Med Hyg* 1987; 81:80–81.
- Rigó K, Gyuranecz M, Tóth AG, Földvári G. Detection of *Borrelia burgdorferi* sensu lato and *Anaplasma phagocytophilum* in small mammals and ectoparasites in Hungary. *Vector-Borne Zoonotic Dis* 2011; 11:1499–1501.
- Rumer L, Graser E, Hillebrand T, Talaska T, et al. *Rickettsia aeschlimannii* in *Hyalomma marginatum* ticks, Germany. *Emerg Infect Dis* 2011a; 17:325–326.
- Rumer L, Sheshukova O, Dautel H, Donoso Mantke O, et al. Differentiation of medically important Euro-Asian tick species *Ixodes ricinus*, *Ixodes persulcatus*, *Ixodes hexagonus*, and *Dermacentor reticulatus* by polymerase chain reaction. *Vector Borne Zoonotic Dis* 2011b; 11:899–905.
- Santos-Silva MM, Sousa R, Santos AS, Melo P, et al. Ticks parasitizing wild birds in Portugal: detection of *Rickettsia aeschlimannii*, *R. helvetica* and *R. massiliae*. *Exp Appl Acarol* 2006; 39:331–338.
- Scoles GA. Phylogenetic analysis of the *Francisella*-like endosymbionts of *Dermacentor* ticks. *J Med Entomol* 2004; 41:277–286.
- Simser, JA, Palmer AT, Fingerle V, Wilske B, et al. *Rickettsia monacensis* sp. nov., a spotted fever group rickettsia, from ticks (*Ixodes ricinus*) collected in a European city park. *Appl Environ Microbiol* 2002; 68:4559–4566.
- Sréter-Lancz Z, Széll Z, Sréter T, Márialigeti K. Detection of a novel *Francisella* in *Dermacentor reticulatus*: A need for careful evaluation of PCR-based identification of *Francisella tularensis* in Eurasian ticks. *Vector Borne Zoonotic Dis* 2009; 9:123–126.
- Stenos J, Graves SR, Unsworth NB. A highly sensitive and specific real-time PCR assay for the detection of spotted fever and typhus group Rickettsiae. *Am J Trop Med Hyg* 2005; 73:1083–1085.
- Tamura K, Peterson D, Peterson N, Stecher G, et al. MEGA5: Molecular evolutionary genetics analysis using maximum likelihood, evolutionary distance, and maximum parsimony methods. *Mol Biol Evol* 2011; 28:2731–2739.
- Versage JL, Severin DD, Chu MC, Petersen JM. Development of a multitarget real-time TaqMan PCR assay for enhanced detection of *Francisella tularensis* in complex specimens. *J Clin Microbiol* 2003; 41:5492–5499.

Address correspondence to:

Sándor Hornok  
 Department of Parasitology and Zoology  
 Faculty of Veterinary Science  
 Szent István University  
 Budapest, Hungary

E-mail: Hornok.Sandor@aotk.szie.hu