



**University of  
Zurich** <sup>UZH</sup>

**Zurich Open Repository and  
Archive**

University of Zurich  
Main Library  
Strickhofstrasse 39  
CH-8057 Zurich  
[www.zora.uzh.ch](http://www.zora.uzh.ch)

---

Year: 2012

---

## **Implantable cardioverter defibrillator avoids shock during electrocution**

Saguner, A M ; Duru, F

DOI: <https://doi.org/10.1093/eurheartj/ehr296>

Posted at the Zurich Open Repository and Archive, University of Zurich

ZORA URL: <https://doi.org/10.5167/uzh-60339>

Journal Article

Published Version

Originally published at:

Saguner, A M; Duru, F (2012). Implantable cardioverter defibrillator avoids shock during electrocution. *European Heart Journal*, 33(6):694.

DOI: <https://doi.org/10.1093/eurheartj/ehr296>

circumstances will, however, require prospective evaluation in adequately powered randomized studies. New strategies to prevent the development of coronary artery disease in patients with a psychiatric illness such as anxiety or depression may be of special importance in view of the lack of evidence that psychiatric medications such as antidepressant medications decrease cardiovascular risk.<sup>6</sup>

Thus, while the exact mechanisms linking a prior psychiatric hospitalization and a first hospitalization for NCCP to increased cardiovascular and total mortality remain uncertain, we are indebted to Gilles *et al.*<sup>4</sup> for pointing out the increased cardiovascular risk and the need for cardiovascular evaluation of these patients. The increasing evidence that both vascular disease and psychiatric illnesses such as anxiety and depression share common mechanisms suggests challenges and opportunities for both the psychiatrist and the cardiologist to improve risk detection and to prevent cardiovascular and total mortality in patients with psychiatric illnesses both with and without NCCP. One might consider a strategy such as outlined in *Figure 1* for patients hospitalized with a psychiatric illness such as depression if we are to prevent the development of cardiovascular disease before the patient presents with chest pain and an increased risk of death. This will, however, require a further understanding of the links between psychiatric illness and cardiovascular disease as well as prospective evaluation.

**Conflict of interest:** none declared.

## References

1. Pope JH, Auferheide TP, Ruthazer R, Woolard RH, Feldman JA, Beshansky JR, Griffith JL, Selker HP. Missed diagnosis of acute cardiac ischemia in the emergency department. *N Engl J Med* 2000;**342**:1163–1170.
2. Lindsell CJ, Anantharaman V, Diercks D, Han JH, Hoekstra JW, Kirk JW, Lim S-H, Peacock WF, Tiffany B, Wilke EK, Gibler WB, Pollack CV Jr. For the EMCREG-International I8trACS Investigators. The Internet Tracking Registry of acute coronary Syndromes (i8trACS): a multicenter registry of patients with suspicion of acute coronary syndromes reported using the standardized reporting guidelines for emergency department chest pain studies. *Ann Emerg Med* 2006;**48**:666–677.
3. Keefe FJ, Shelby RA, Somers TJ, Varia I, Blazing M, Waters SJ, McKee D, Silva S, She L, Blumenthal JA, O'Connor J, Knowles V, Johnson P, Bradley L. Effects of coping skills training and sertraline in patients with non-cardiac chest pain: a randomized study. *Pain* 2011;**152**:707–708.
4. Gillies M, Jhund PS, MacTeague K, MacIntyre P, Allardyce J, Batty GD, MacIntyre K. Prior psychiatric hospitalization is associated with excess mortality in patients hospitalized with non-cardiac chest pain: a data linkage study based on the full Scottish population (1991–2006). *Eur Heart J* 2012;**33**:760–767.
5. Bhardwaj A, Truong QA, Peacock WF, Yeo K-T J, Storrow A, Thomas S, Curtis KM, Foote RS, Lee HK, Miller KF, Januzzi JL. A multicenter comparison of established and emerging cardiac biomarkers for the diagnostic evaluation of chest pain in the emergency department. *Am Heart J* 2011;**162**:276–282.
6. Cameron OG, Ehrmann DE, Pitt B. Depression, anxiety, anger, and heart failure. In: Riba M, Wulsin L, Rubenfire M, eds. *PsychoCardiology: The Interface Between Psychiatry and Cardiology*. London: John Wiley & Sons, Ltd; 2011:34–48.
7. Ehrmann DE, Deldin PJ, Pitt B. Cardiovascular disease, major depressive disorder, and sleep-disordered breathing: shared pathways and co-morbidities. *Int J Cardiol* 2011;**147**:1–3.

## CARDIOVASCULAR FLASHLIGHT

doi:10.1093/eurheartj/ehr296

Online publish-ahead-of-print 16 August 2011

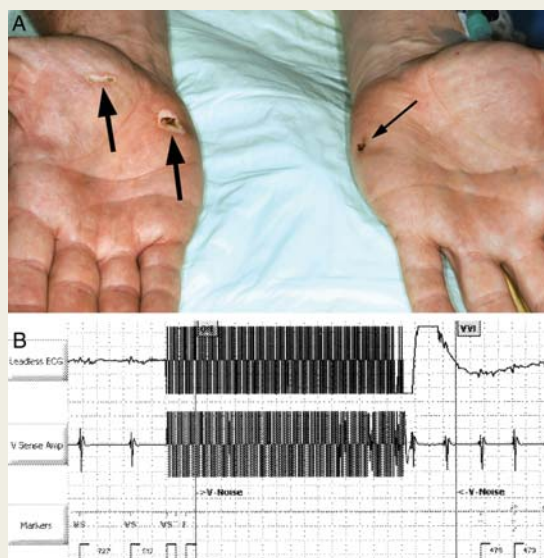
### Implantable cardioverter defibrillator avoids shock during electrocution

Ardan M. Saguner and Firat Duru\*

Clinic for Cardiology, University Hospital Zurich, Raemistrasse 100, CH-8091 Zurich, Switzerland

\* Corresponding author. Tel: +41 44 2553565, Fax: +41 44 2554401, Email: firat.duru@usz.ch

A 30-year-old electrician with an implantable cardioverter defibrillator (ICD) who had previous history of idiopathic ventricular fibrillation presented to emergency room after incurring electrocution injury while accidentally grasping a 230 Volt 50 Hz alternating current power line at work. He was in contact with the power line for approximately 3 s though he remained conscious. At presentation, the patient was clinically in stable condition. Physical examination revealed two grade IIa entrance burns of the right palm (*Panel A*, bold arrows) and one grade I exit burn of the left palm (*Panel A*, thin arrow), which served as the ground. The burns were surgically treated by cautious debridement. Subsequently, ICD interrogation revealed appropriate 'noise reversion' (*Panel B*) due to detection of continuous high-frequency sensing in the ventricular channel for 3.3 s avoiding shock delivery. No ventricular tachyarrhythmia was induced during electrocution. However, the heart rate was more rapid after the event, possibly due to sinus tachycardia. All ICD measurements were within the normal range. Twelve-lead surface ECG and the cardiac biomarkers remained normal after the event. The patient was discharged on the same day.



Published on behalf of the European Society of Cardiology. All rights reserved. © The Author 2011. For permissions please email: journals.permissions@oup.com